

SIGN NUMBER: 1,4
 TYPE: A
 QUANTITY: 2
 SIGN WIDTH: 210"
 HEIGHT: 126"
 TOTAL AREA: 183.8 Sq.Ft.
 BORDER TYPE: FLUSH
 RADII: 12"
 WIDTH: 2"
 RECESS: 0"
 NO. Z BARS: 3
 LENGTH: 202.0

BACKG COLOR: Green
 COPY COLOR: White

SYMBOL	X	Y	WID	HT
M1_4	56.3	73	36	36
ARDOWN	17	11	32	22
ARDOWN	161	11	32	22

MAT'L: 0.125" (3.2MM) ALUMINUM



USE NOTES

- Legend and border (except those that are colored black) shall be direct applied Grade A sheeting.
- Background shall be Grade C reflective sheeting.
- Shields; A, B, and C type arrows shall be on 0.032" (0.8mm) aluminum and demountable.

LETTER POSITIONS

Letter spacings are to start of next letter

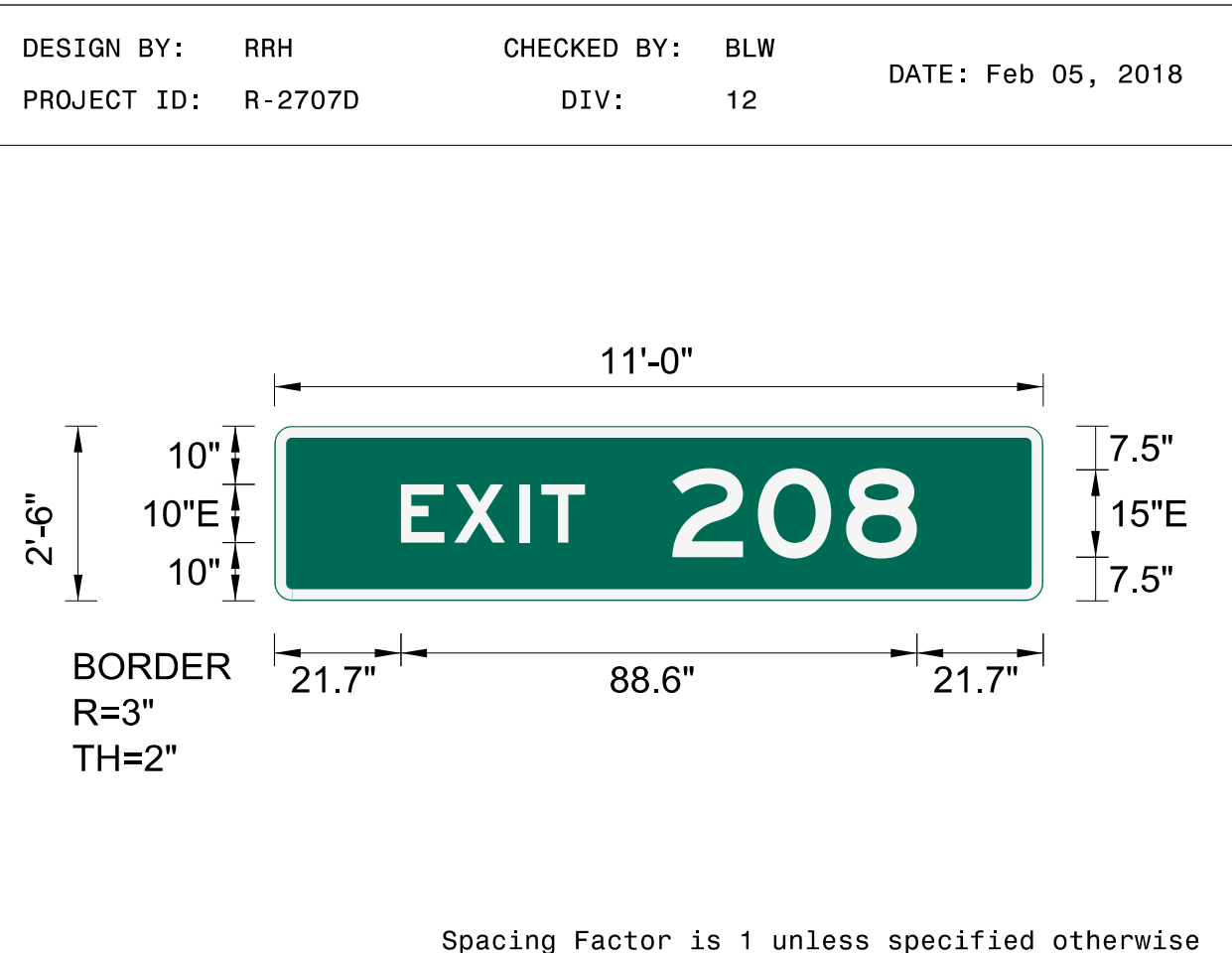
Letter spacings are to start of next letter											Series/Size Text Length
E	A	S	T								E 2000
107.3	11.3	1.5	13.6	11	9	56.3					46.4
G	a	s	t	o	n	i	a				EM 2000
50.5	16.3	15.2	13.9	12	15.8	17	8.2	10.6	50.5		109

SIGN NUMBER: 2A,7A
 TYPE: B
 QUANTITY: 2
 SIGN WIDTH: 132"
 HEIGHT: 30"
 TOTAL AREA: 27.5 Sq.Ft.
 BORDER TYPE: FLUSH
 RADII: 3"
 WIDTH: 2"
 RECESS: 0"
 NO. Z BARS: 2
 LENGTH: 124.0

BACKG COLOR: Green
 COPY COLOR: White

SYMBOL	X	Y	WID	HT

MAT'L: 0.125" (3.2MM) ALUMINUM



USE NOTES

- Legend and border (except those that are colored black) shall be direct applied Grade A sheeting.
- Background shall be Grade C reflective sheeting.

LETTER POSITIONS

Letter spacings are to start of next letter

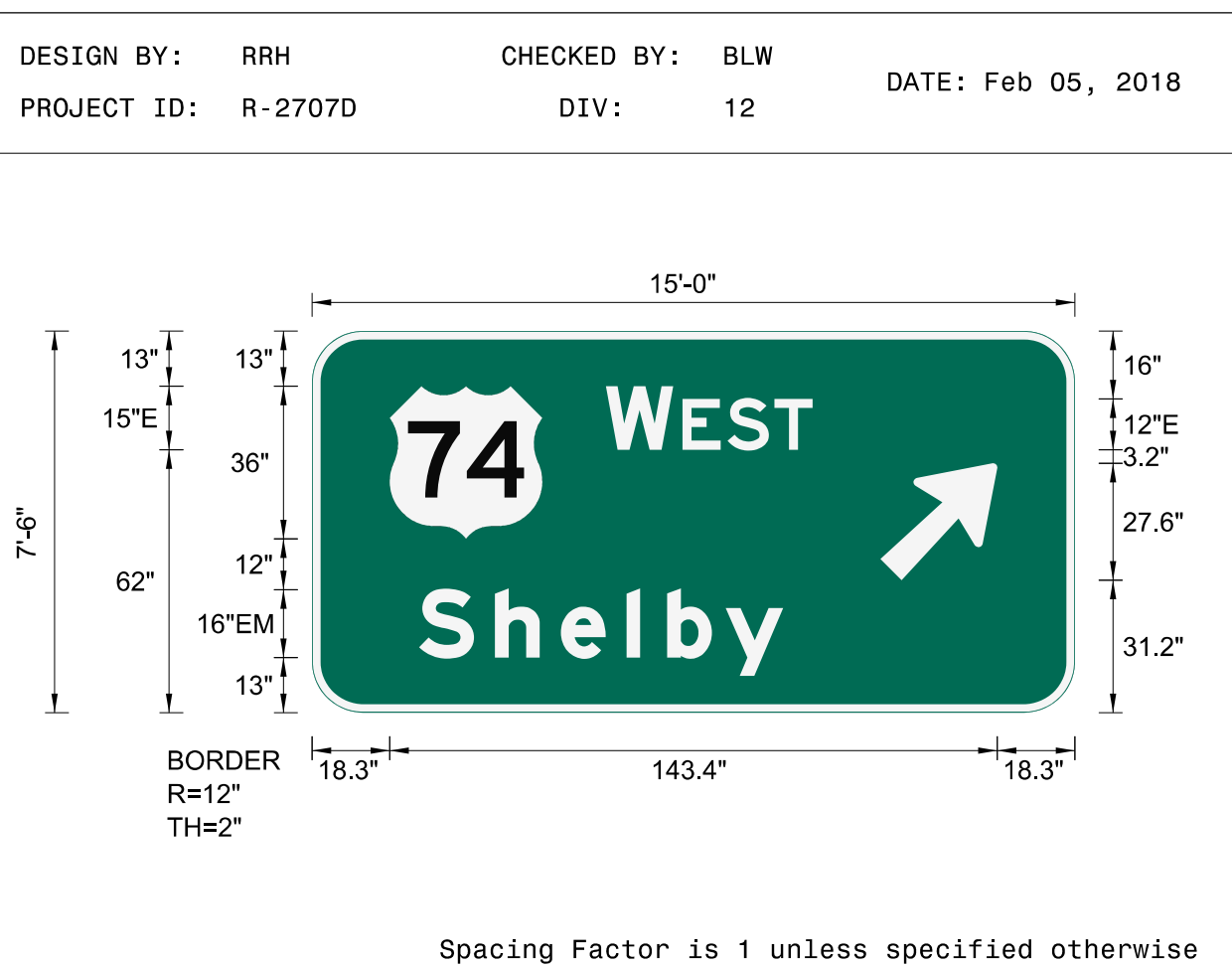
Letter spacings are to start of next letter											Series/Size Text Length
E	X	I	T								E 2000
21.7	9.2	11.1	3.8	7.5	78.7						31.6
2	0	8									E 2000
68.3	14.7	15.2	12.2	21.7							42

SIGN NUMBER: 2B
 TYPE: A
 QUANTITY: 1
 SIGN WIDTH: 180"
 HEIGHT: 90"
 TOTAL AREA: 112.5 Sq.Ft.
 BORDER TYPE: FLUSH
 RADII: 12"
 WIDTH: 2"
 RECESS: 0"
 NO. Z BARS: 3
 LENGTH: 172.0

BACKG COLOR: Green
 COPY COLOR: White

SYMBOL	X	Y	WID	HT
M1_4	18.3	41	36	36
AR_Type A	134.1	131.2	22.3	35

MAT'L: 0.125" (3.2MM) ALUMINUM



USE NOTES

- Legend and border (except those that are colored black) shall be direct applied Grade A sheeting.
- Background shall be Grade C reflective sheeting.
- Shields; A, B, and C type arrows shall be on 0.032" (0.8mm) aluminum and demountable.

LETTER POSITIONS

Letter spacings are to start of next letter

Letter spacings are to start of next letter											Series/Size Text Length
W	E	S	T								E 2000
69.3	15.9	2.2	10.7	11	9	61.9					48.8
s	h	e	l	b	y						EM 2000
25.2	17.9	15.5	15.5	9.6	13.8	13.6	68.8				85.9

SIGN NUMBER: 3
 TYPE: A
 QUANTITY: 1
 SIGN WIDTH: 198"
 HEIGHT: 114"
 TOTAL AREA: 156.8 Sq.Ft.
 BORDER TYPE: FLUSH
 RADII: 12"
 WIDTH: 2"
 RECESS: 0"
 NO. Z BARS: 3
 LENGTH: 190.0

BACKG COLOR: Green
 COPY COLOR: White

SYMBOL	X	Y	WID	HT
AR_Type A	17.4	44.5	22.3	35
M1_4	80.8	43.3	36	36

MAT'L: 0.125" (3.2MM) ALUMINUM



USE NOTES

- Legend and border (except those that are colored black) shall be direct applied Grade A sheeting.
- Background shall be Grade C reflective sheeting.
- Shields; A, B, and C type arrows shall be on 0.032" (0.8mm) aluminum and demountable.

LETTER POSITIONS

Letter spacings are to start of next letter

Letter spacings are to start of next letter											Series/Size Text Length
B	Y	-	P	A	S	S					E 2000
61	11	13.1	6.1	10.7	13.6	11.4	9.7	61.4			75.6
W	E	S	T								E 2000
131.8	15.9	2.2	10.7	11	9	17.4					48.8
A	s	h	e	v	i	l	l	e			EM 2000
61.8	18.2	15.5	15.5	13.8	17	9.6	9.6	8.2	10.6	18.2	117.9

TIP NO. R-2707D SHEET NO. SIGN-4

APPROVED: *Patsy L. Watson*

DATE: 4/27/2023

SEAL

DOCUMENT NOT CONSIDERED FINAL
 UNLESS ALL SIGNATURES COMPLETED

\$\$\$\$\$SYTIME\$\$\$\$\$
 \$\$\$DDN\$\$\$\$\$
 \$\$\$USERNAME\$\$\$\$\$