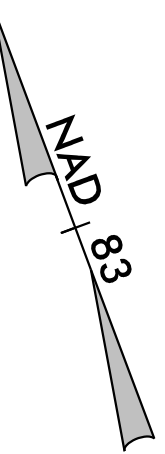
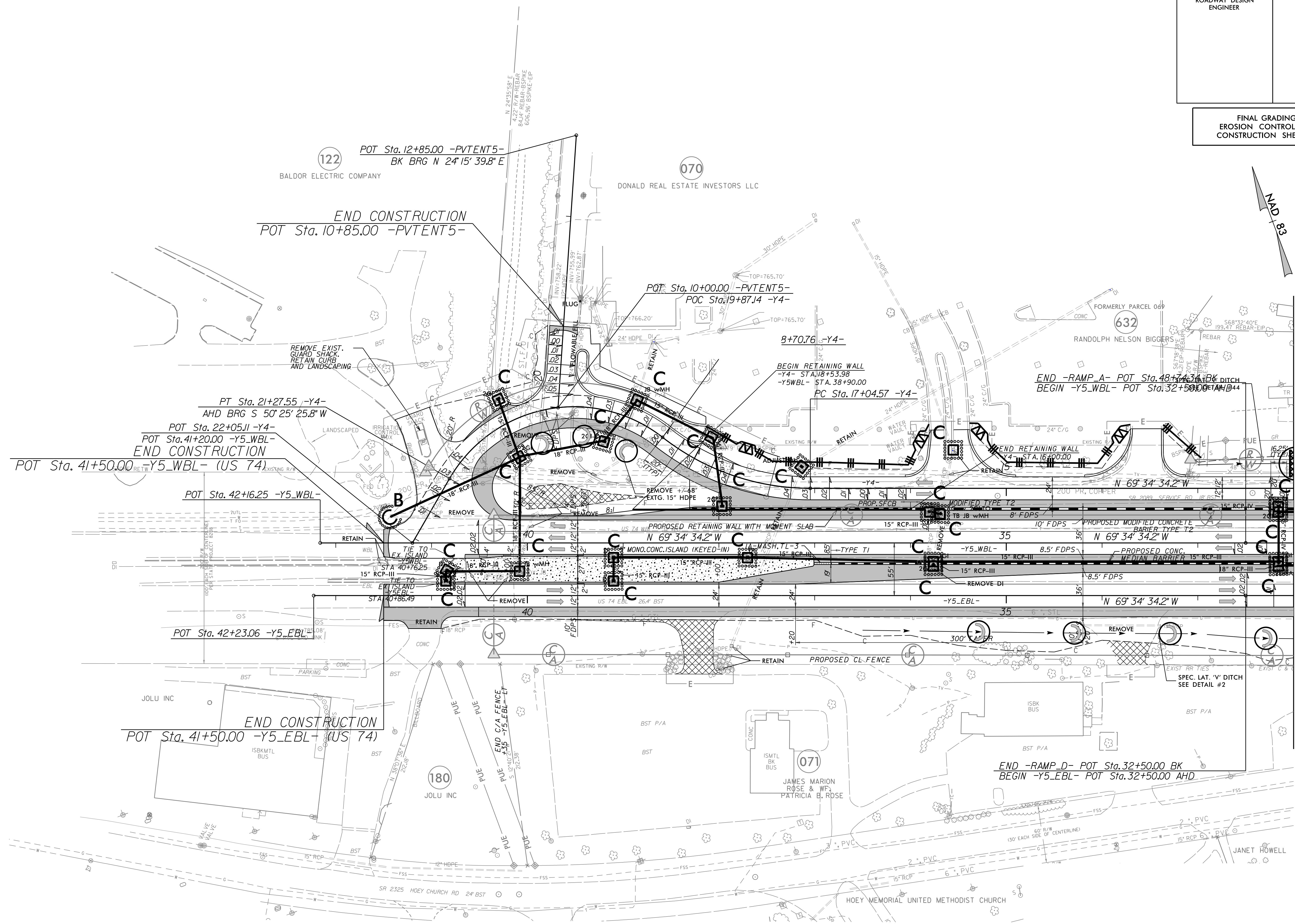


7/27/99

PROJECT REFERENCE NO.	SHEET NO.
R-2707D	EC-60/CONST.26
RW SHEET NO.	
ROADWAY DESIGN ENGINEER	HYDRAULICS ENGINEER

FINAL GRADING  
EROSION CONTROL FOR  
CONSTRUCTION SHEET 26



MATCH SHEET NO. 18 STA. 32+00.00 - RAMP D-  
MATCH SHEET NO. 18 STA. 48+24.34 - RAMP A-  
MATCH SHEET NO. 18 STA. 12+00.00 - Y4-

122 POT Sta. 12+85.00 - PVENTENT5-  
BK BRG N 24° 15' 39.8" E

070 DONALD REAL ESTATE INVESTORS LLC

END CONSTRUCTION  
POT Sta. 10+85.00 - PVENTENT5-

POT Sta. 10+00.00 - PVENTENT5-  
POC Sta. 19+87.14 - Y4-

END - RAMP A - POT Sta. 48+24.34 BK  
BEGIN - Y5\_WBL - POT Sta. 32+50.00 AHD

PT Sta. 21+27.55 - Y4-  
AHD BRG S 50° 25' 25.8" W  
POT Sta. 22+05.11 - Y4-  
POT Sta. 41+20.00 - Y5\_WBL-  
END CONSTRUCTION  
POT Sta. 41+50.00 - Y5\_WBL- (US 74)

POT Sta. 42+16.25 - Y5\_WBL-

POT Sta. 42+23.06 - Y5\_EBL-

END CONSTRUCTION  
POT Sta. 41+50.00 - Y5\_EBL- (US 74)

END - RAMP D - POT Sta. 32+50.00 BK  
BEGIN - Y5\_EBL - POT Sta. 32+50.00 AHD

180 JOLU INC

071 JAMES MARION ROSE & WIFE PATRICIA B. ROSE

JANET HOWELL