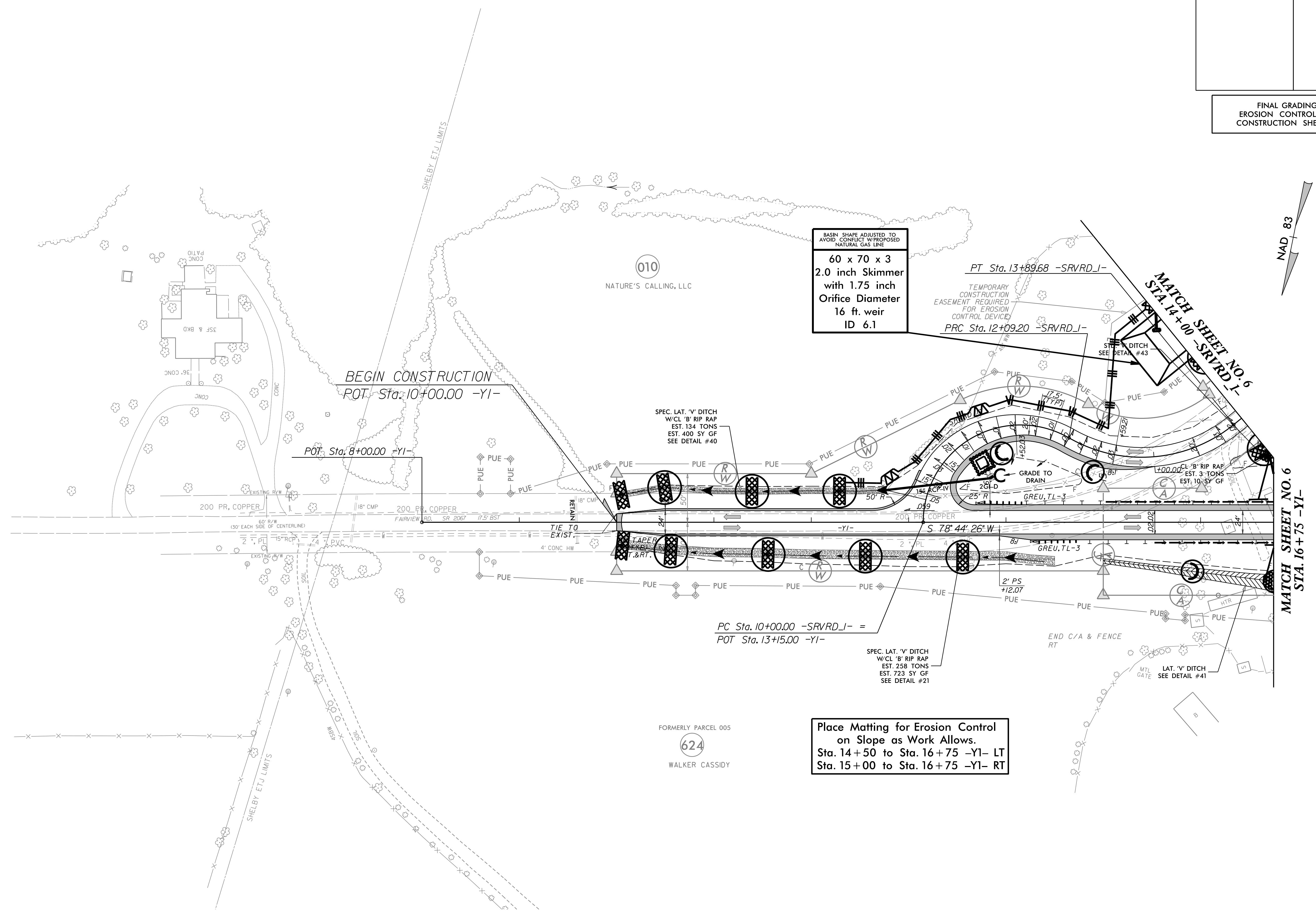


7/22/99

PROJECT REFERENCE NO. <i>R-2707D</i>	SHEET NO. <i>EC-54/CONST.20</i>
RW SHEET NO.	
ROADWAY DESIGN ENGINEER	HYDRAULICS ENGINEER

FINAL GRADING  
EROSION CONTROL FOR  
CONSTRUCTION SHEET 20

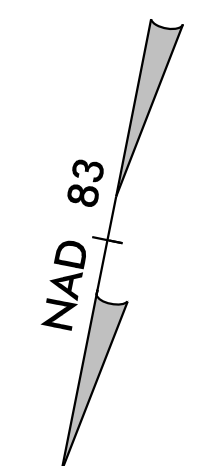


BASIN SHAPE ADJUSTED TO AVOID CONFLICT W/PROPOSED NATURAL GAS LINE

60 x 70 x 3  
2.0 inch Skimmer  
with 1.75 inch  
Orifice Diameter  
16 ft. weir  
ID 6.1

PC Sta. 10+00.00 -SRVRD-I- =  
POT Sta. 13+15.00 -YI-

Place Matting for Erosion Control  
on Slope as Work Allows.  
Sta. 14+50 to Sta. 16+75 -YI- LT  
Sta. 15+00 to Sta. 16+75 -YI- RT



010  
NATURE'S CALLING, LLC

FORMERLY PARCEL 005  
624  
WALKER CASSIDY

BEGIN CONSTRUCTION  
POT Sta. 10+00.00 -YI-

POT Sta. 8+00.00 -YI-

MATCH SHEET NO. 5  
STA. 14+00 -SRVRD-I-

MATCH SHEET NO. 6  
STA. 16+75 -YI-