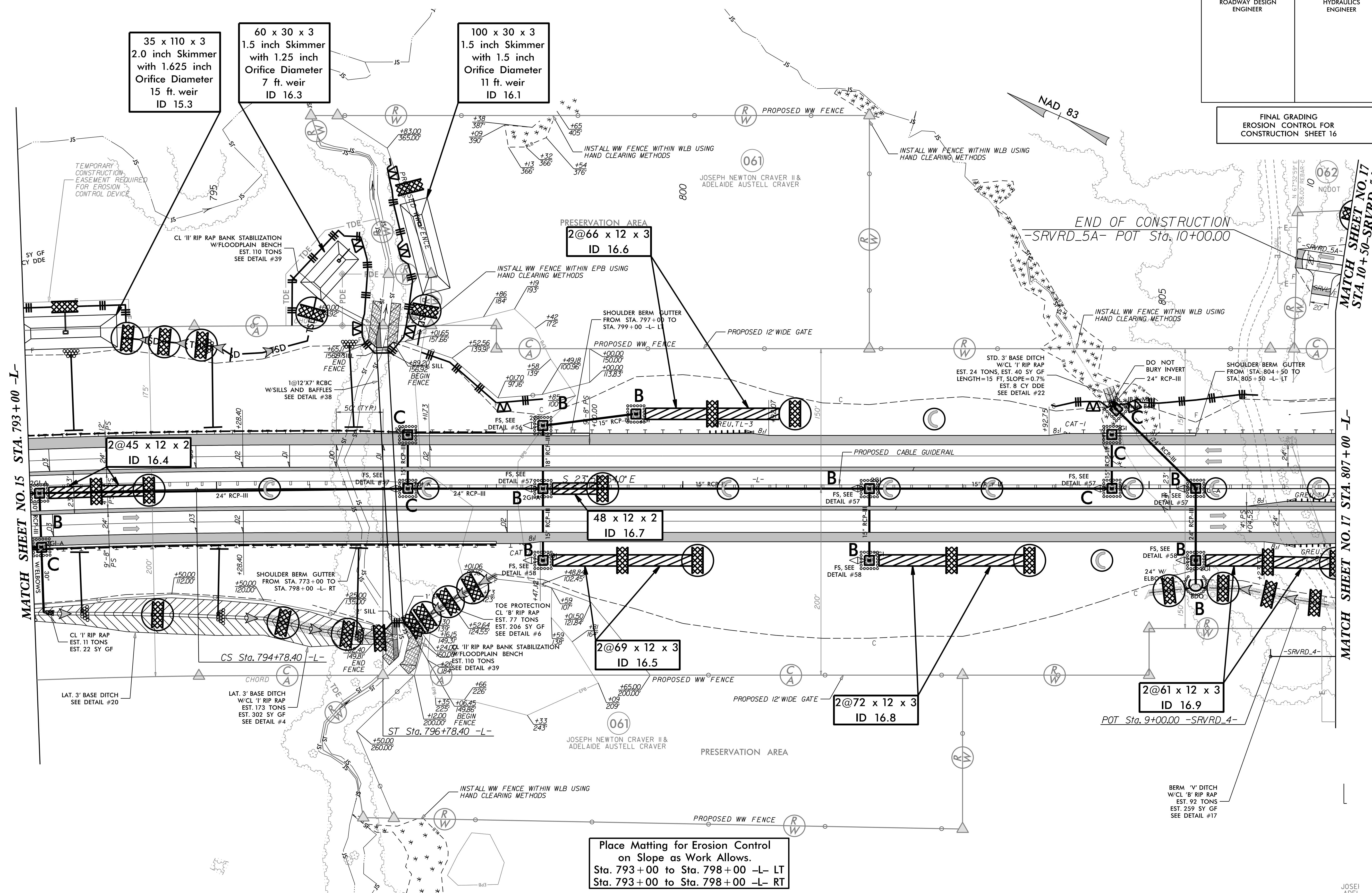


7/27/99

PROJECT REFERENCE NO. R-2707D	SHEET NO. EC-49/CONST.16
RW SHEET NO.	
ROADWAY DESIGN ENGINEER	HYDRAULICS ENGINEER

FINAL GRADING
EROSION CONTROL FOR
CONSTRUCTION SHEET 16



MATCH SHEET NO. 15 STA. 793+00 -L-

MATCH SHEET NO. 17 STA. 807+00 -L-

MATCH SHEET NO. 17 STA. 10+50 -SRVRD_5A-

Place Matting for Erosion Control
on Slope as Work Allows.
Sta. 793+00 to Sta. 798+00 -L- LT
Sta. 793+00 to Sta. 798+00 -L- RT

JOSEPH ANFI