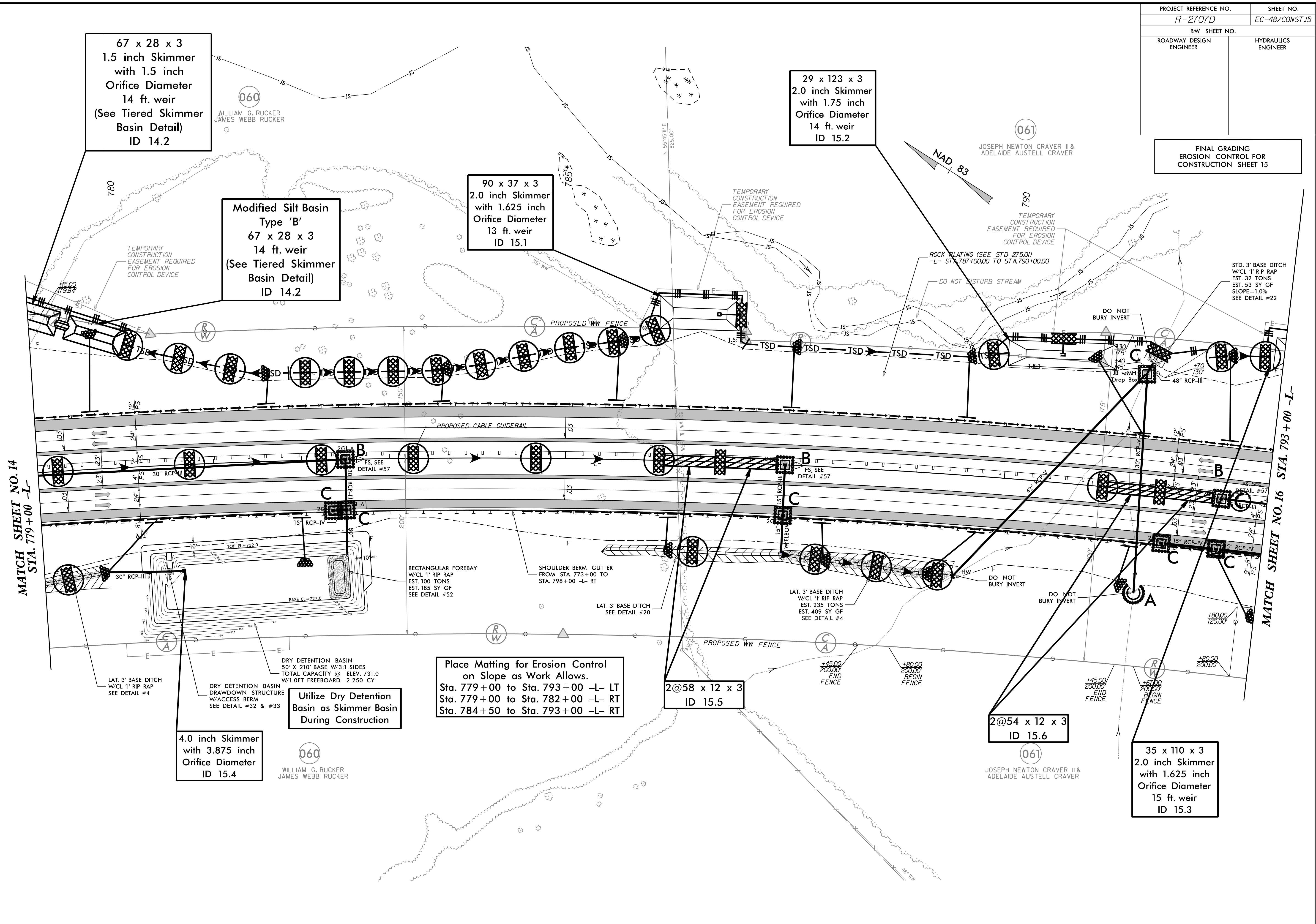


7/27/99

PROJECT REFERENCE NO. <i>R-2707D</i>	SHEET NO. <i>EC-48/CONST.15</i>
RW SHEET NO.	
ROADWAY DESIGN ENGINEER	HYDRAULICS ENGINEER

FINAL GRADING  
EROSION CONTROL FOR  
CONSTRUCTION SHEET 15



67 x 28 x 3  
1.5 inch Skimmer  
with 1.5 inch  
Orifice Diameter  
14 ft. weir  
(See Tiered Skimmer  
Basin Detail)  
ID 14.2

Modified Silt Basin  
Type 'B'  
67 x 28 x 3  
14 ft. weir  
(See Tiered Skimmer  
Basin Detail)  
ID 14.2

90 x 37 x 3  
2.0 inch Skimmer  
with 1.625 inch  
Orifice Diameter  
13 ft. weir  
ID 15.1

29 x 123 x 3  
2.0 inch Skimmer  
with 1.75 inch  
Orifice Diameter  
14 ft. weir  
ID 15.2

Place Matting for Erosion Control  
on Slope as Work Allows.  
Sta. 779+00 to Sta. 793+00 -L- LT  
Sta. 779+00 to Sta. 782+00 -L- RT  
Sta. 784+50 to Sta. 793+00 -L- RT

4.0 inch Skimmer  
with 3.875 inch  
Orifice Diameter  
ID 15.4

Utilize Dry Detention  
Basin as Skimmer Basin  
During Construction

2@58 x 12 x 3  
ID 15.5

2@54 x 12 x 3  
ID 15.6

35 x 110 x 3  
2.0 inch Skimmer  
with 1.625 inch  
Orifice Diameter  
15 ft. weir  
ID 15.3

060  
WILLIAM G. RUCKER  
JAMES WEBB RUCKER

061  
JOSEPH NEWTON CRAVER II &  
ADELAIDE AUSTELL CRAVER

060  
WILLIAM G. RUCKER  
JAMES WEBB RUCKER

061  
JOSEPH NEWTON CRAVER II &  
ADELAIDE AUSTELL CRAVER

MATCH SHEET NO. 14  
STA. 779+00 -L-

MATCH SHEET NO. 16  
STA. 793+00 -L-