

7/27/99

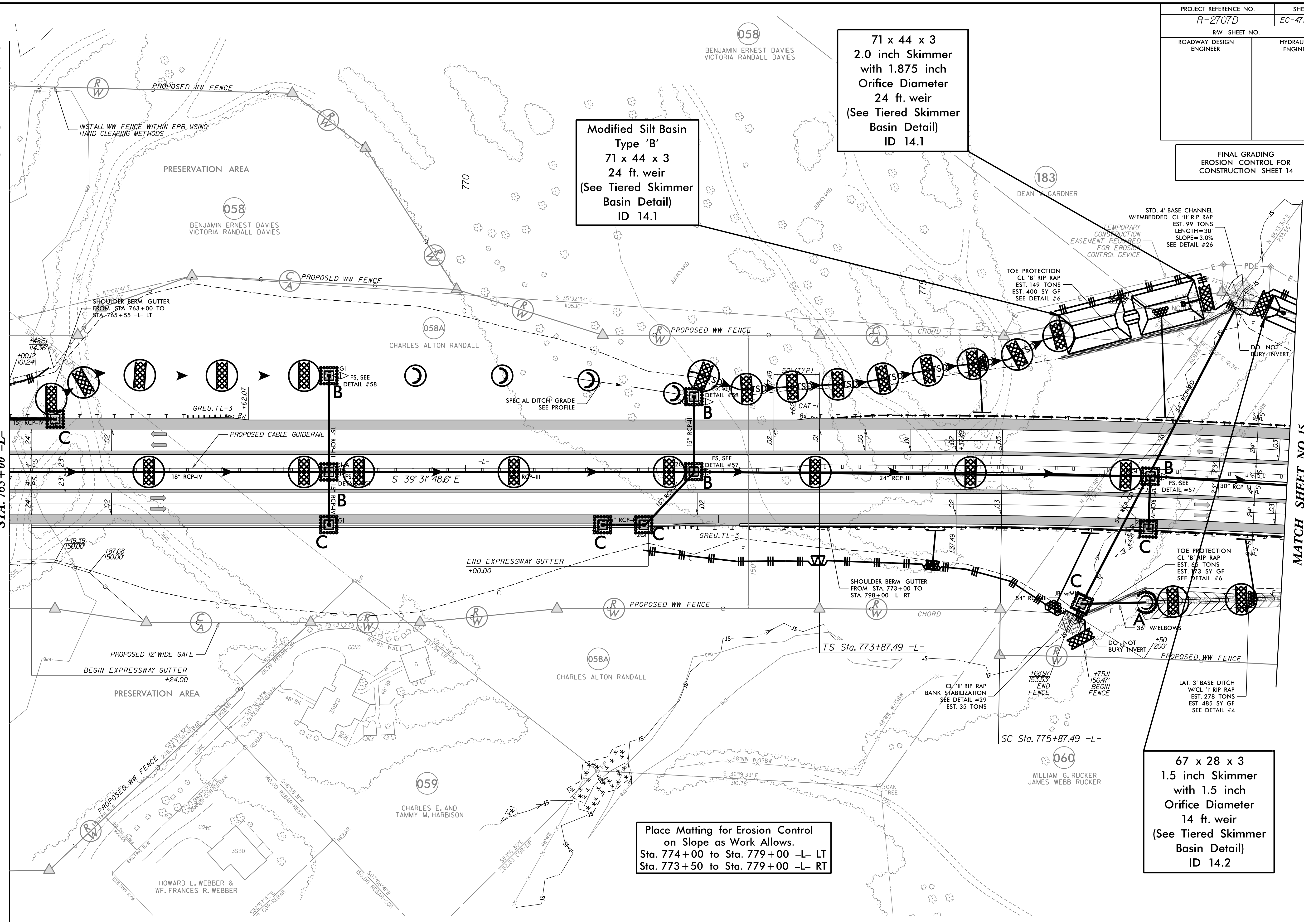
| | |
|---|------------------------------------|
| PROJECT REFERENCE NO. <i>R-2707D</i> | SHEET NO. <i>EC-47/CONST.14</i> |
| RW SHEET NO. | |
| ROADWAY DESIGN ENGINEER | HYDRAULICS ENGINEER |

FINAL GRADING
EROSION CONTROL FOR
CONSTRUCTION SHEET 14

MATCH SHEET NO. 24

MATCH SHEET NO. 13
STA. 765+00 -L-

MATCH SHEET NO. 15
STA. 779+00 -L-



**Modified Silt Basin
Type 'B'
71 x 44 x 3
24 ft. weir
(See Tiered Skimmer
Basin Detail)
ID 14.1**

**71 x 44 x 3
2.0 inch Skimmer
with 1.875 inch
Orifice Diameter
24 ft. weir
(See Tiered Skimmer
Basin Detail)
ID 14.1**

**Place Matting for Erosion Control
on Slope as Work Allows.
Sta. 774+00 to Sta. 779+00 -L- LT
Sta. 773+50 to Sta. 779+00 -L- RT**

**67 x 28 x 3
1.5 inch Skimmer
with 1.5 inch
Orifice Diameter
14 ft. weir
(See Tiered Skimmer
Basin Detail)
ID 14.2**

7/27/99