

7/2/99

PROJECT REFERENCE NO.	SHEET NO.
R-2707D	EC-39/CONST.08
RW SHEET NO.	
ROADWAY DESIGN ENGINEER	HYDRAULICS ENGINEER

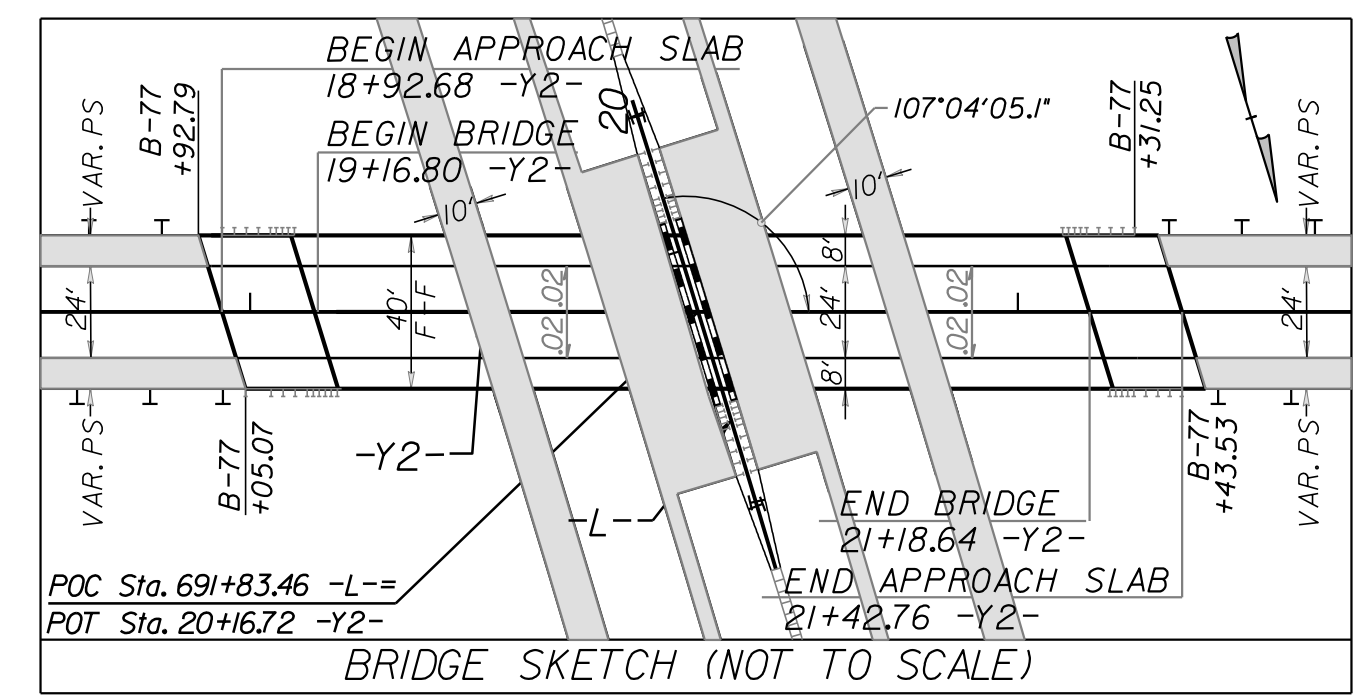
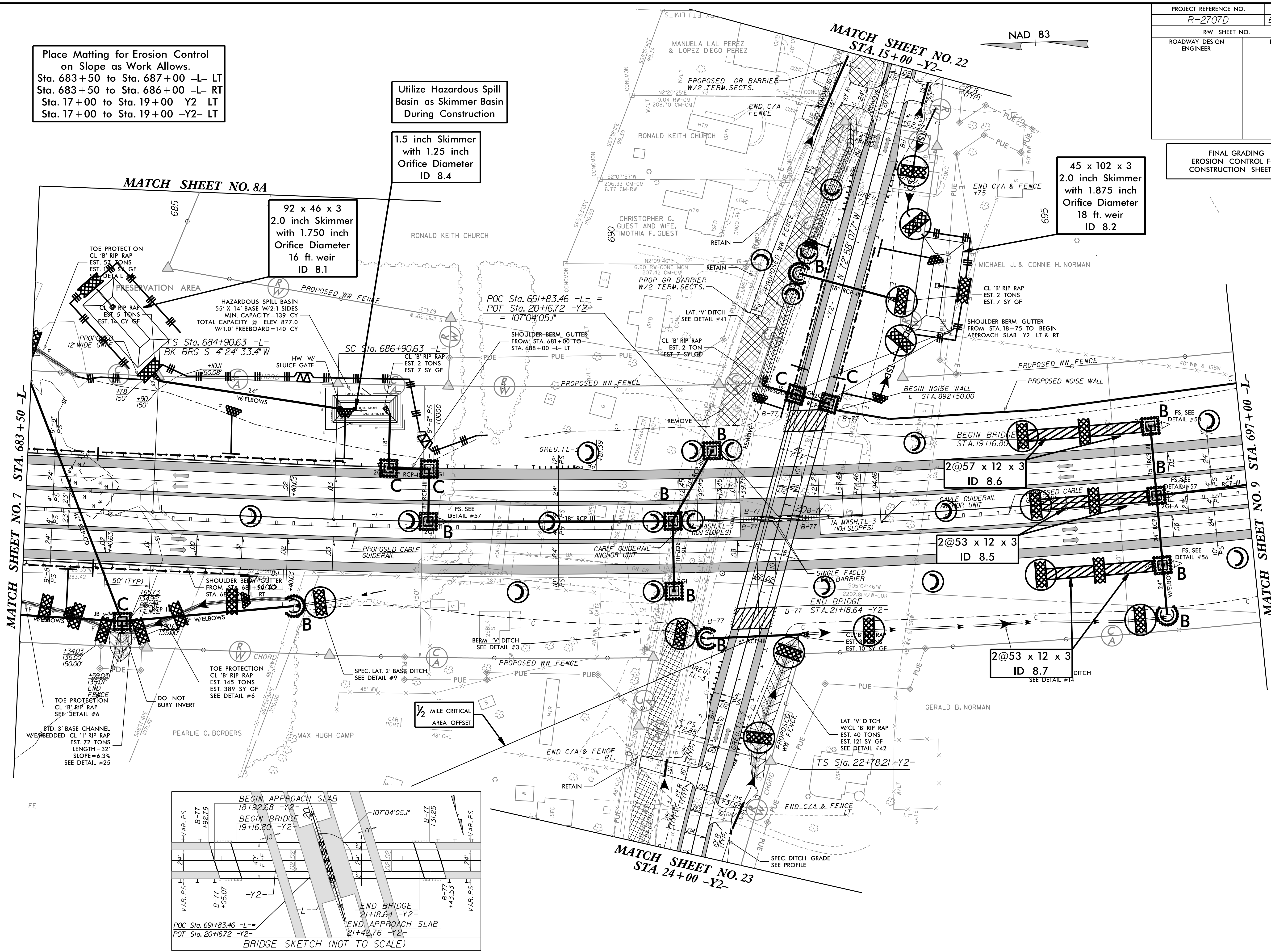
Place Matting for Erosion Control on Slope as Work Allows.
 Sta. 683+50 to Sta. 687+00 -L- LT
 Sta. 683+50 to Sta. 686+00 -L- RT
 Sta. 17+00 to Sta. 19+00 -Y2- LT
 Sta. 17+00 to Sta. 19+00 -Y2- LT

Utilize Hazardous Spill Basin as Skimmer Basin During Construction

1.5 inch Skimmer with 1.25 inch Orifice Diameter ID 8.4

45 x 102 x 3
 2.0 inch Skimmer with 1.875 inch Orifice Diameter
 18 ft. weir
 ID 8.2

FINAL GRADING EROSION CONTROL FOR CONSTRUCTION SHEET 08



MATCH SHEET NO. 7 STA. 683+50 -L-

MATCH SHEET NO. 9 STA. 697+00 -L-

MATCH SHEET NO. 23 STA. 24+00 -Y2-

MATCH SHEET NO. 8A

MATCH SHEET NO. 22 STA. 15+00 -Y2-

NAD 83

FE

1/2 MILE CRITICAL AREA OFFSET

TOE PROTECTION CL 'B' RIP RAP EST. 5 TONS EST. 13 SY GF SEE DETAIL #5

HAZARDOUS SPILL BASIN 55' X 14' BASE W/2:1 SIDES MIN. CAPACITY=139 CY TOTAL CAPACITY @ ELEV. 877.0 W/1.0' FREEBOARD=140 CY

POC Sta. 691+83.46 -L- = POT Sta. 20+16.72 -Y2- = 107°04'05.1"

SHOULDER BERM GUTTER FROM STA. 681+00 TO STA. 688+00 -L- LT

2@57 x 12 x 3 ID 8.6

2@53 x 12 x 3 ID 8.5

2@53 x 12 x 3 ID 8.7

STD. 3' BASE CHANNEL WE'BBEDDED CL 'I' RIP RAP EST. 72 TONS LENGTH=32' SLOPE=6.3% SEE DETAIL #25

TOE PROTECTION CL 'B' RIP RAP EST. 145 TONS EST. 389 SY GF SEE DETAIL #6

SINGLE FACED BARRIER 505'04'46"W 2202.81R/W-COR STA. 21+18.64 -Y2-

TS Sta. 22+78.21 -Y2-

BEGIN BRIDGE 19+16.80 -Y2-

END BRIDGE 21+18.64 -Y2-

POC Sta. 691+83.46 -L- = POT Sta. 20+16.72 -Y2-