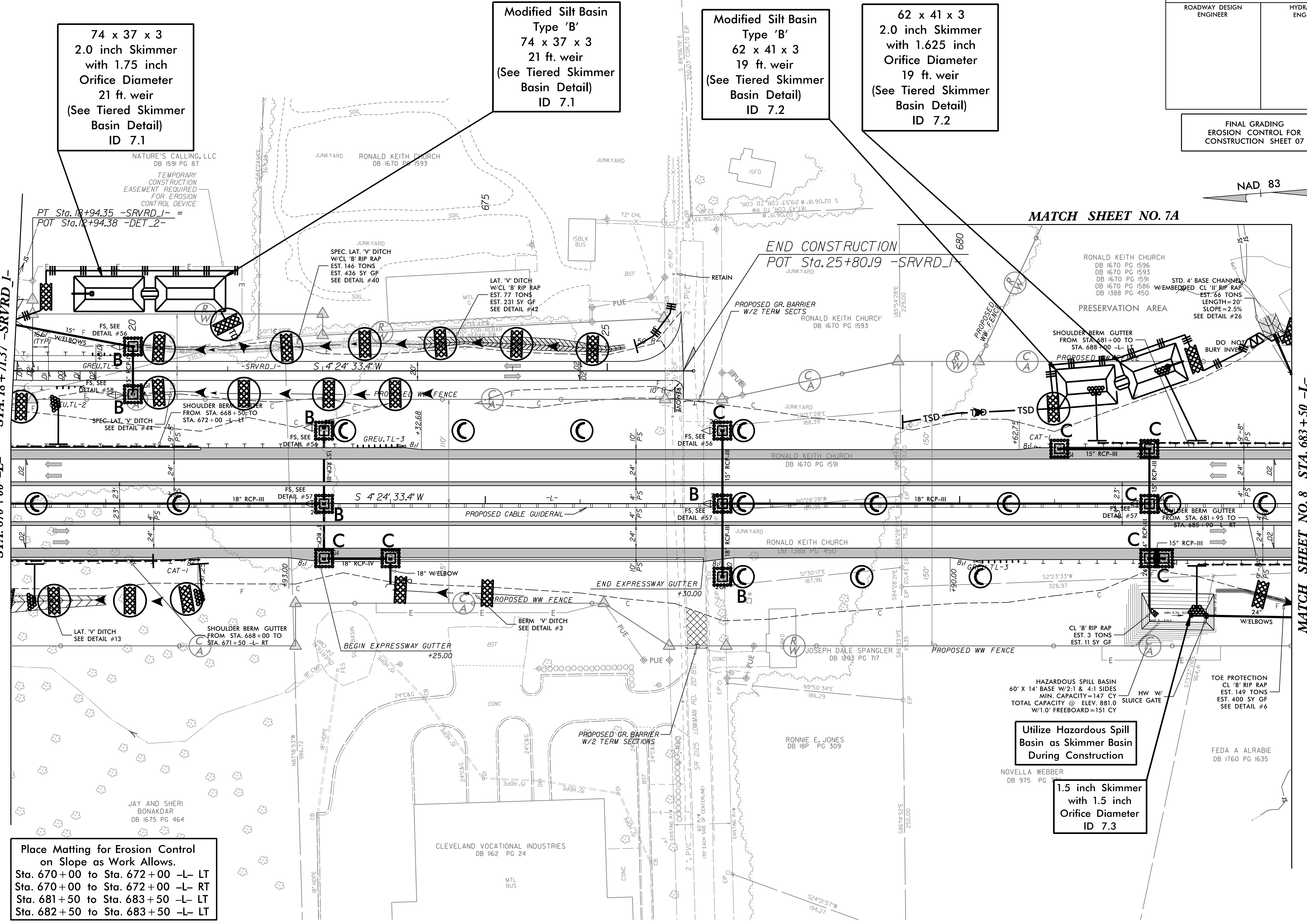


PROJECT REFERENCE NO.	SHEET NO.
R-2707D	EC-37/CONST.07
RW SHEET NO.	
ROADWAY DESIGN ENGINEER	HYDRAULICS ENGINEER

FINAL GRADING
EROSION CONTROL FOR
CONSTRUCTION SHEET 07

MATCH SHEET NO. 6
STA. 670+00 -L-
STA. 18+71.37 -SRVRD_1-

MATCH SHEET NO. 8
STA. 683+50 -L-



74 x 37 x 3
2.0 inch Skimmer
with 1.75 inch
Orifice Diameter
21 ft. weir
(See Tiered Skimmer
Basin Detail)
ID 7.1

Modified Silt Basin
Type 'B'
74 x 37 x 3
21 ft. weir
(See Tiered Skimmer
Basin Detail)
ID 7.1

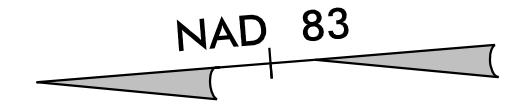
Modified Silt Basin
Type 'B'
62 x 41 x 3
19 ft. weir
(See Tiered Skimmer
Basin Detail)
ID 7.2

62 x 41 x 3
2.0 inch Skimmer
with 1.625 inch
Orifice Diameter
19 ft. weir
(See Tiered Skimmer
Basin Detail)
ID 7.2

Utilize Hazardous Spill
Basin as Skimmer Basin
During Construction

1.5 inch Skimmer
with 1.5 inch
Orifice Diameter
ID 7.3

Place Matting for Erosion Control
on Slope as Work Allows.
Sta. 670+00 to Sta. 672+00 -L- LT
Sta. 670+00 to Sta. 672+00 -L- RT
Sta. 681+50 to Sta. 683+50 -L- LT
Sta. 682+50 to Sta. 683+50 -L- LT



MATCH SHEET NO. 7A

END CONSTRUCTION
POT Sta. 25+80.19 -SRVRD_1-

HAZARDOUS SPILL BASIN
60' X 14' BASE W/2.1 & 4-1 SIDES
MIN. CAPACITY=147 CY
TOTAL CAPACITY @ ELEV. 881.0
W/1.0' FREEBOARD=151 CY

TOE PROTECTION
CL 'B' RIP RAP
EST. 149 TONS
EST. 400 SY GF
SEE DETAIL #6

FEDA A ALRABIE
DB 1760 PG 1635

NATURE'S CALLING, LLC
DB 1591 PG 87

JUNKYARD RONALD KEITH CHURCH
DB 1670 PG 1593

JUNKYARD

ISBLK BUS

SPEC. LAT. 'V' DITCH
W/CL 'B' RIP RAP
EST. 146 TONS
EST. 436 SY GF
SEE DETAIL #40

LAT. 'V' DITCH
W/CL 'B' RIP RAP
EST. 77 TONS
EST. 231 SY GF
SEE DETAIL #42

RONALD KEITH CHURCH
DB 1670 PG 1596
DB 1670 PG 1593
DB 1670 PG 1591
DB 1670 PG 1586
DB 1388 PG 450

PRESERVATION AREA

SHOULDER BERM GUTTER
FROM STA. 681+00 TO
STA. 683+00 -L- LT
PROPOSED W/2 TERM SECTS

SHOULDER BERM GUTTER
FROM STA. 668+50 TO
STA. 672+00 -L- LT

FS, SEE
DETAIL #54

GREU, TL-3

FS, SEE
DETAIL #56

FS, SEE
DETAIL #57

SHOULDER BERM GUTTER
FROM STA. 681+95 TO
STA. 685+00 -L- RT

BEGIN EXPRESSWAY GUTTER
+25.00

END EXPRESSWAY GUTTER
+30.00

CL 'B' RIP RAP
EST. 3 TONS
EST. 11 SY GF

JAY AND SHERI
BONAKDAR
DB 1675 PG 464

CLEVELAND VOCATIONAL INDUSTRIES
DB 1162 PG 24

RONNIE E. JONES
DB 18P PG 309

NOVELLA WEBBER
DB 975 PG