

7/2/99

PROJECT REFERENCE NO.		SHEET NO.	
R-2707D		EC-33/CONST.04	
RW SHEET NO.			
ROADWAY DESIGN ENGINEER		HYDRAULICS ENGINEER	

FINAL GRADING
EROSION CONTROL FOR
CONSTRUCTION SHEET 04

Place Matting for Erosion Control
on Slope as Work Allows.
Sta. 636+50 to Sta. 643+00 -L- LT
Sta. 642+50 to Sta. 643+00 -L- RT

Utilize Dry Detention
Basin as Skimmer Basin
During Construction

DRY DETENTION BASIN W/3:1 SIDES
TOTAL CAPACITY @ ELEV. 859.0
W/1.0FT FREEBOARD=2,310 CY

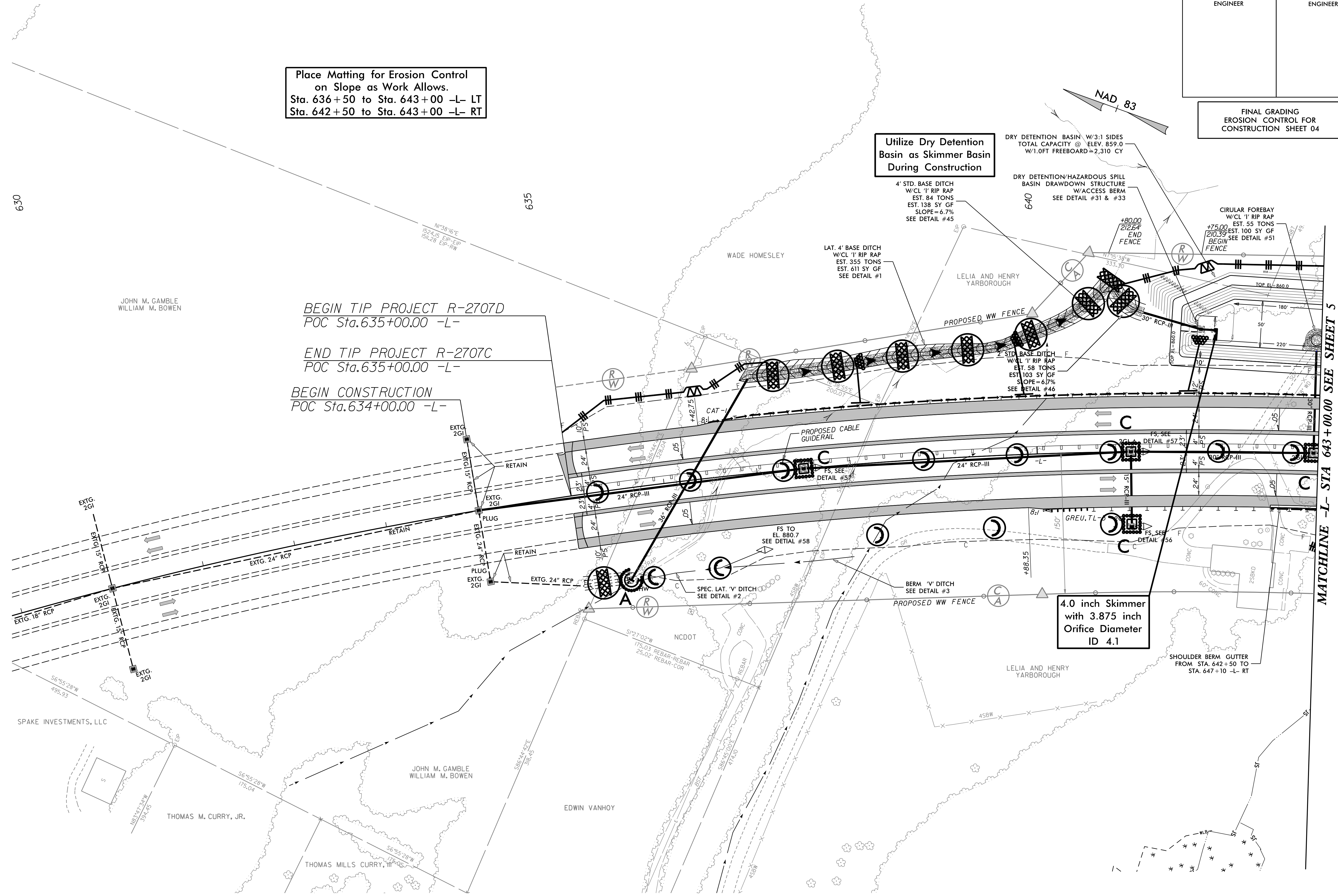
DRY DETENTION/HAZARDOUS SPILL
BASIN DRAWDOWN STRUCTURE
W/ACCESS BERM
SEE DETAIL #31 & #33

CIRULAR FOREBAY
W/CL '1' RIP RAP
EST. 55 TONS
210.39 EST. 100 SY GF
BEGIN FENCE SEE DETAIL #51

BEGIN TIP PROJECT R-2707D
POC Sta.635+00.00 -L-

END TIP PROJECT R-2707C
POC Sta.635+00.00 -L-

BEGIN CONSTRUCTION
POC Sta.634+00.00 -L-



4.0 inch Skimmer
with 3.875 inch
Orifice Diameter
ID 4.1

MATCHLINE -L- STA 643+00.00 SEE SHEET 5

JOHN M. GAMBLE
WILLIAM M. BOWEN

SPAKE INVESTMENTS, LLC

THOMAS M. CURRY, JR.

THOMAS MILLS CURRY, III

JOHN M. GAMBLE
WILLIAM M. BOWEN

EDWIN VANHOY

WADE HOMESLEY

LELIA AND HENRY
YARBOROUGH

LELIA AND HENRY
YARBOROUGH

NCDOT

SHOULDER BERM GUTTER
FROM STA. 642+50 TO
STA. 647+10 -L- RT

NAD 83