

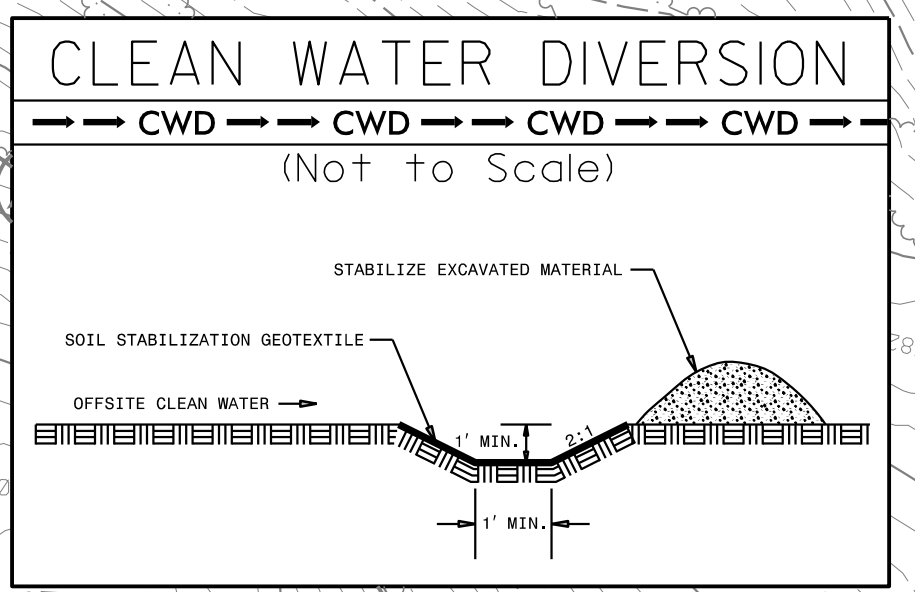
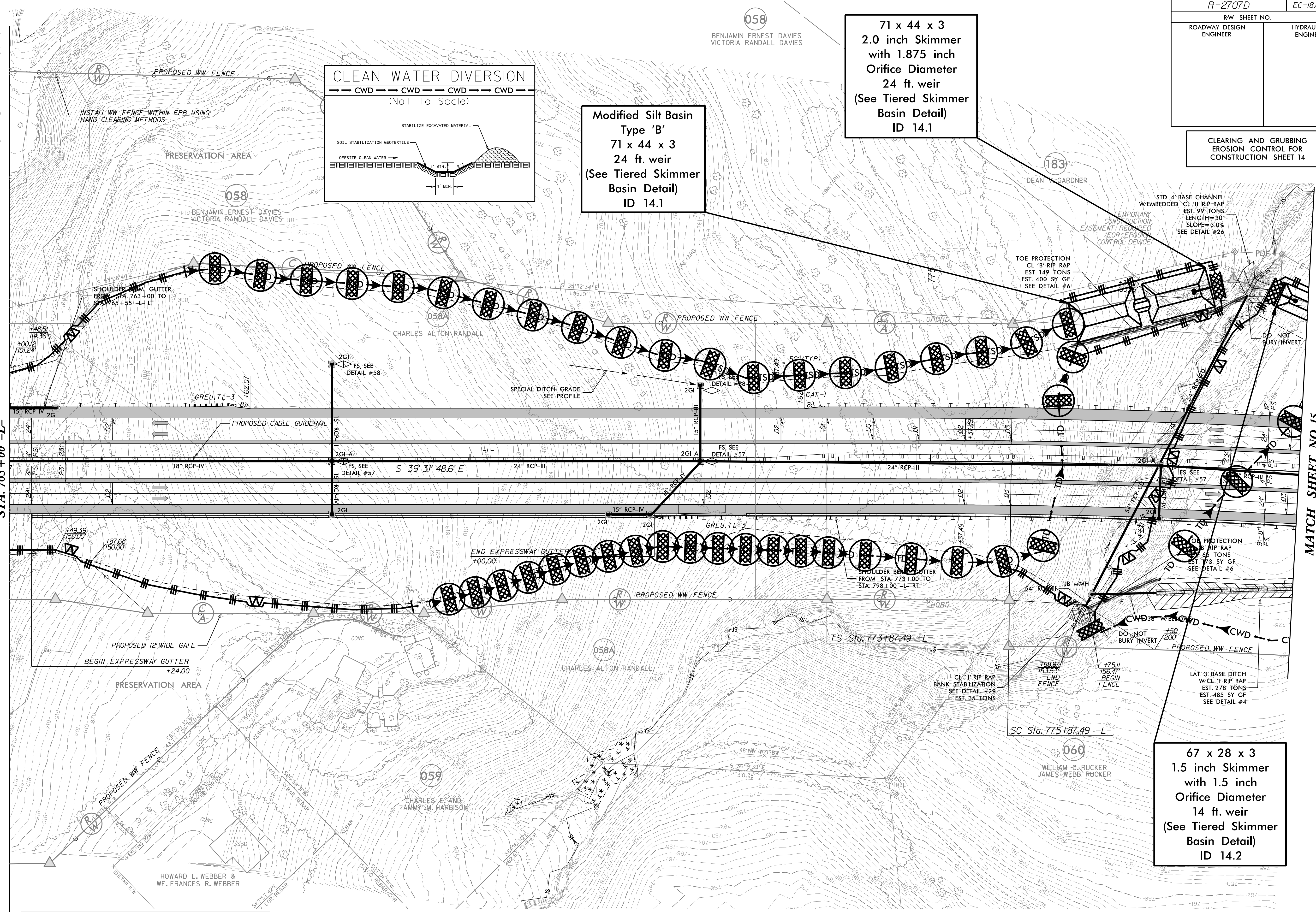
7/27/99

PROJECT REFERENCE NO. <i>R-2707D</i>	SHEET NO. <i>EC-18/CONST.14</i>
RW SHEET NO.	
ROADWAY DESIGN ENGINEER	HYDRAULICS ENGINEER

MATCH SHEET NO. 24

MATCH SHEET NO. 13  
STA. 765+00 -L-

MATCH SHEET NO. 15  
STA. 779+00 -L-



**Modified Silt Basin**  
 Type 'B'  
 71 x 44 x 3  
 24 ft. weir  
 (See Tiered Skimmer Basin Detail)  
 ID 14.1

71 x 44 x 3  
 2.0 inch Skimmer  
 with 1.875 inch  
 Orifice Diameter  
 24 ft. weir  
 (See Tiered Skimmer Basin Detail)  
 ID 14.1

CLEARING AND GRUBBING  
 EROSION CONTROL FOR  
 CONSTRUCTION SHEET 14

NOTE:  
 PLACE TEMPORARY ROCK SEDIMENT DAMS TYPE - B  
 AND TEMPORARY ROCK SILT CHECKS TYPE - A AT  
 DRAINAGE OUTLETS.

INSTALL PIPE(S) IN JURISDICTIONAL AREAS WITHOUT IMPACTING STREAM UNTIL  
 AREA STABILIZED AND ACCORDING TO NCDOT BEST MANAGEMENT  
 PRACTICES FOR CONSTRUCTION AND MAINTENANCE ACTIVITIES MANUAL.

67 x 28 x 3  
 1.5 inch Skimmer  
 with 1.5 inch  
 Orifice Diameter  
 14 ft. weir  
 (See Tiered Skimmer Basin Detail)  
 ID 14.2