

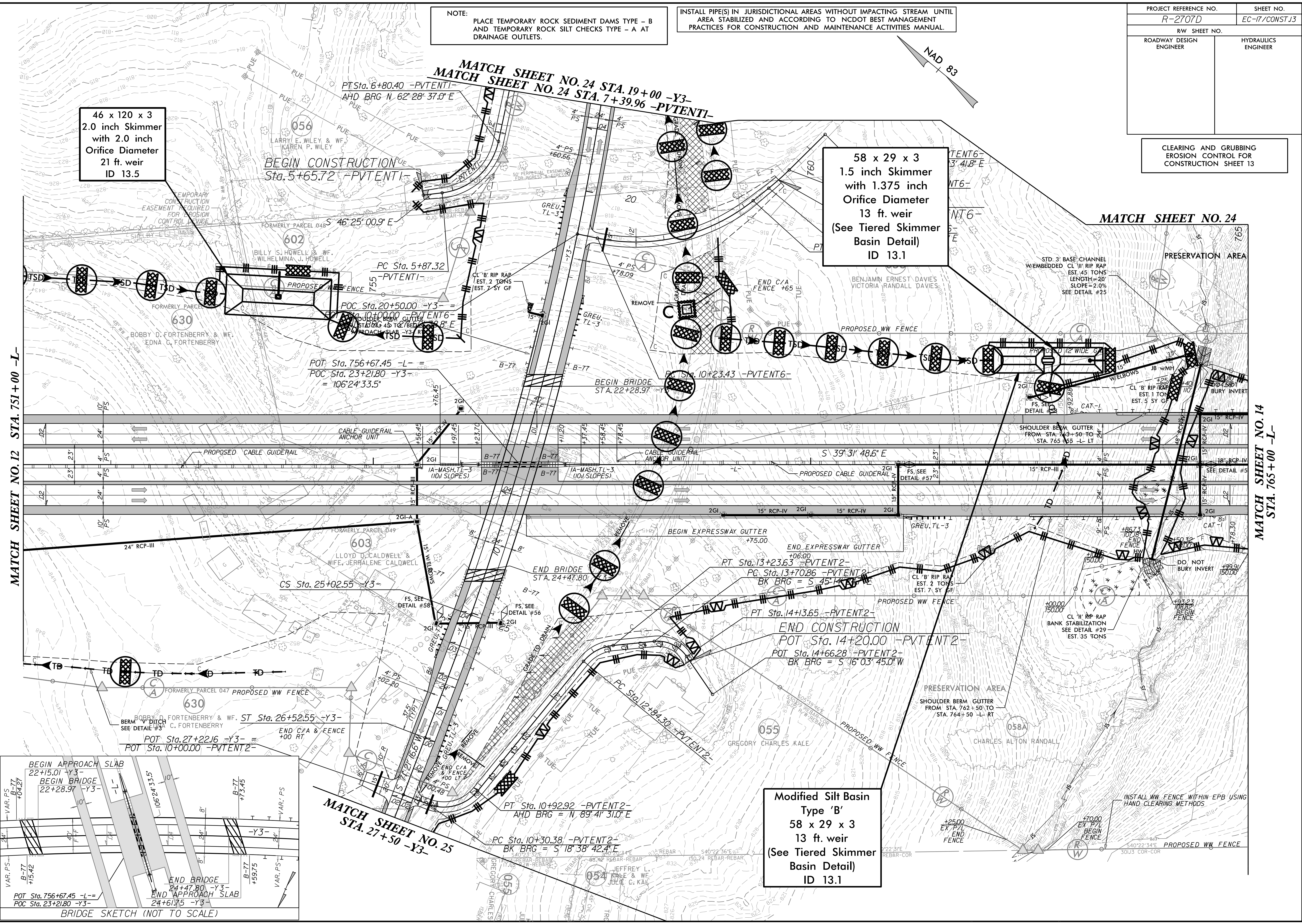
7/27/99

NOTE:  
PLACE TEMPORARY ROCK SEDIMENT DAMS TYPE - B  
AND TEMPORARY ROCK SILT CHECKS TYPE - A AT  
DRAINAGE OUTLETS.

INSTALL PIPE(S) IN JURISDICTIONAL AREAS WITHOUT IMPACTING STREAM UNTIL  
AREA STABILIZED AND ACCORDING TO NCDOT BEST MANAGEMENT  
PRACTICES FOR CONSTRUCTION AND MAINTENANCE ACTIVITIES MANUAL.

PROJECT REFERENCE NO. <i>R-2707D</i>	SHEET NO. <i>EC-17/CONST.13</i>
RW SHEET NO.	
ROADWAY DESIGN ENGINEER	HYDRAULICS ENGINEER

CLEARING AND GRUBBING  
EROSION CONTROL FOR  
CONSTRUCTION SHEET 13



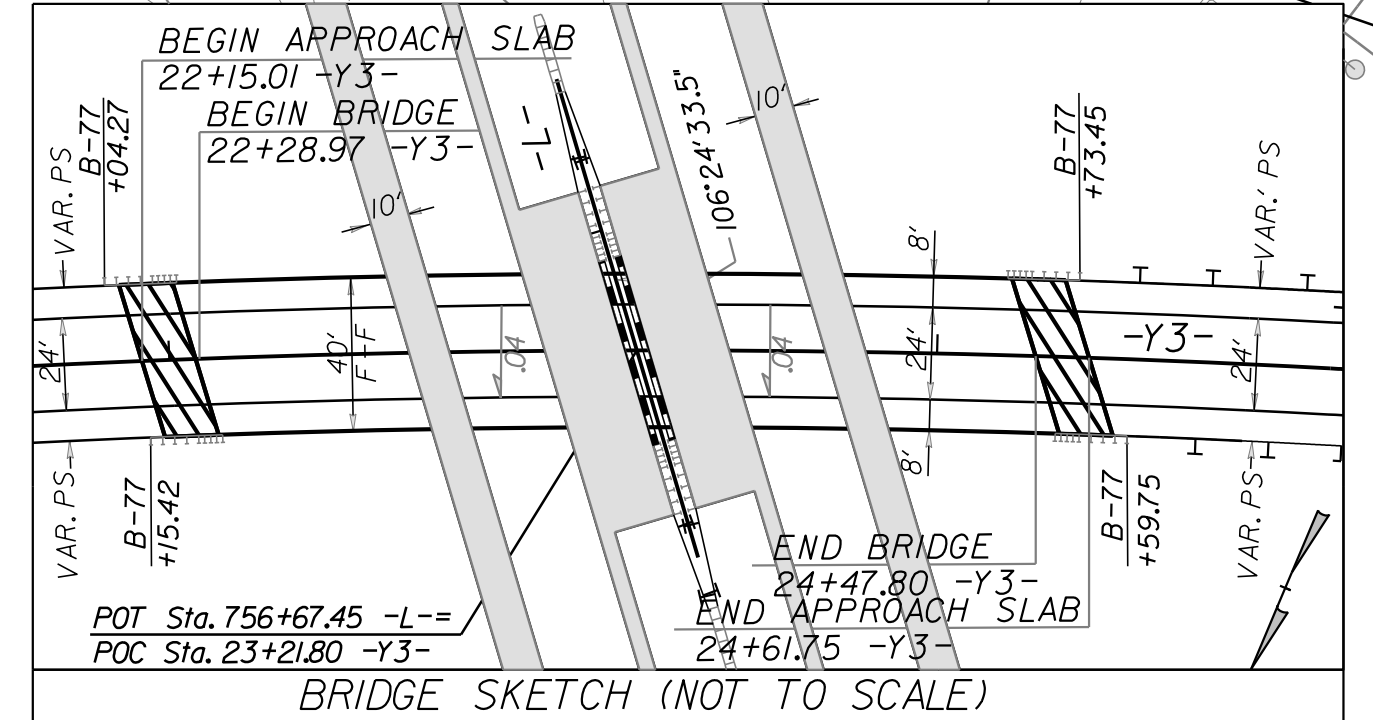
46 x 120 x 3  
2.0 inch Skimmer  
with 2.0 inch  
Orifice Diameter  
21 ft. weir  
ID 13.5

58 x 29 x 3  
1.5 inch Skimmer  
with 1.375 inch  
Orifice Diameter  
13 ft. weir  
(See Tiered Skimmer  
Basin Detail)  
ID 13.1

Modified Silt Basin  
Type 'B'  
58 x 29 x 3  
13 ft. weir  
(See Tiered Skimmer  
Basin Detail)  
ID 13.1

MATCH SHEET NO. 12 STA. 751+00 -L-

MATCH SHEET NO. 14 STA. 765+00 -L-



BRIDGE SKETCH (NOT TO SCALE)