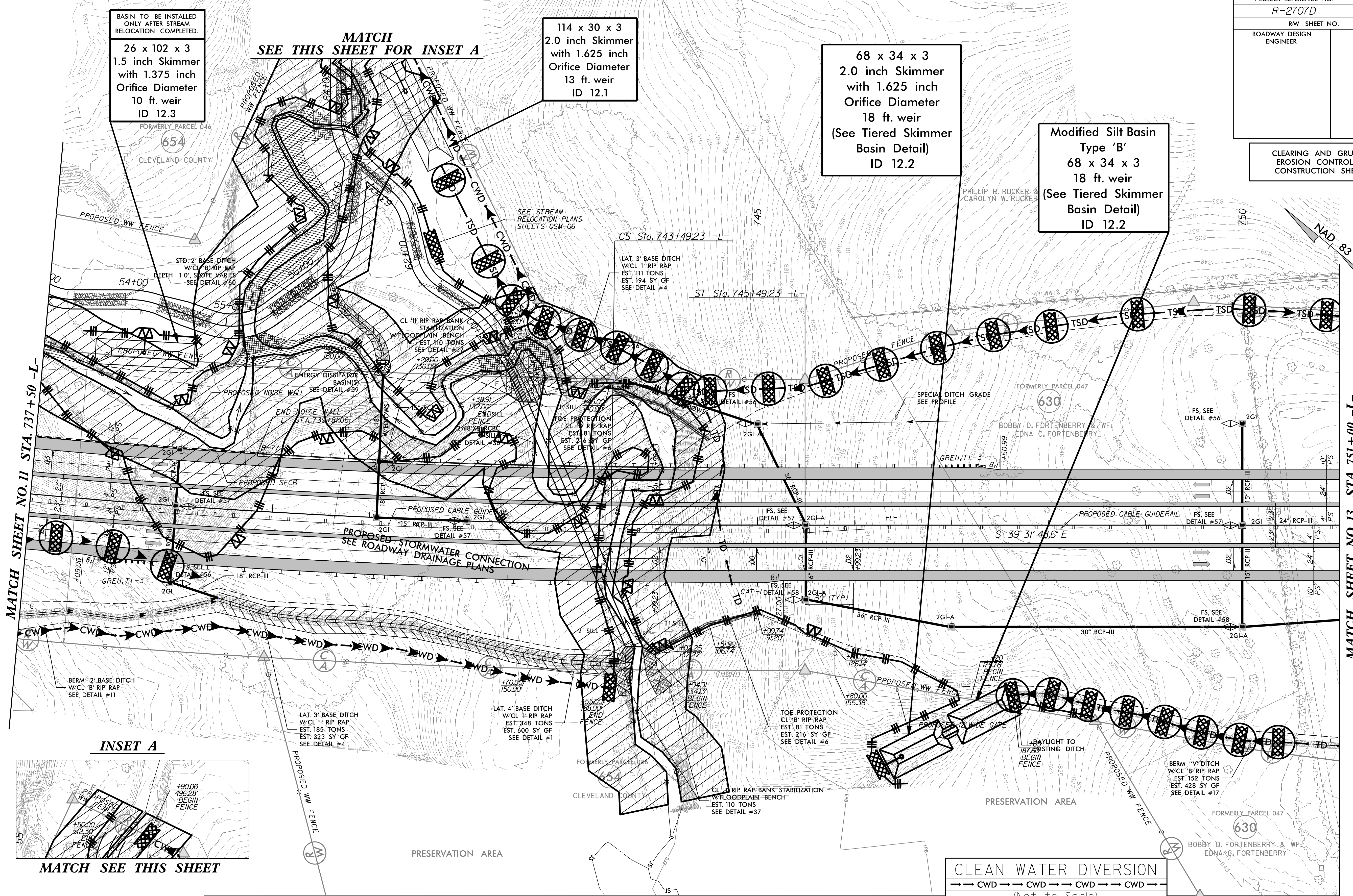


7/27/99

PROJECT REFERENCE NO. <i>R-2707D</i>	SHEET NO. <i>EC-15/CONSTJ2</i>
RW SHEET NO.	
ROADWAY DESIGN ENGINEER	HYDRAULICS ENGINEER

CLEARING AND GRUBBING
EROSION CONTROL FOR
CONSTRUCTION SHEET 12



BASIN TO BE INSTALLED
ONLY AFTER STREAM
RELOCATION COMPLETED.

26 x 102 x 3
1.5 inch Skimmer
with 1.375 inch
Orifice Diameter
10 ft. weir
ID 12.3

114 x 30 x 3
2.0 inch Skimmer
with 1.625 inch
Orifice Diameter
13 ft. weir
ID 12.1

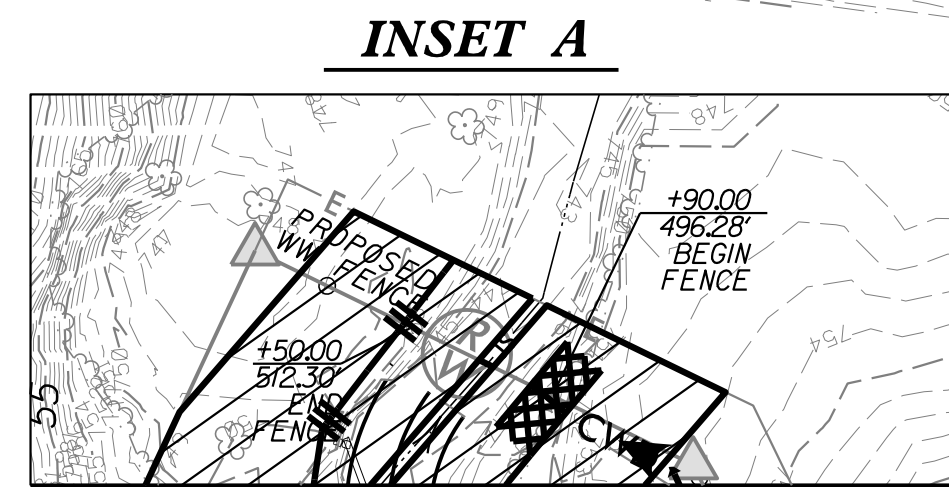
68 x 34 x 3
2.0 inch Skimmer
with 1.625 inch
Orifice Diameter
18 ft. weir
(See Tiered Skimmer
Basin Detail)
ID 12.2

Modified Silt Basin
Type 'B'
68 x 34 x 3
18 ft. weir
(See Tiered Skimmer
Basin Detail)
ID 12.2

MATCH
SEE THIS SHEET FOR INSET A

MATCH SHEET NO. 11 STA. 737+50 -L-

MATCH SHEET NO. 13 STA. 751+00 -L-



MATCH SEE THIS SHEET

NOTE:
PLACE TEMPORARY ROCK SEDIMENT DAMS TYPE - B
AND TEMPORARY ROCK SILT CHECKS TYPE - A AT
DRAINAGE OUTLETS.

ENVIRONMENTALLY SENSITIVE AREA
SEE PROJECT SPECIAL PROVISIONS



MATCH SHEET NO. 12A