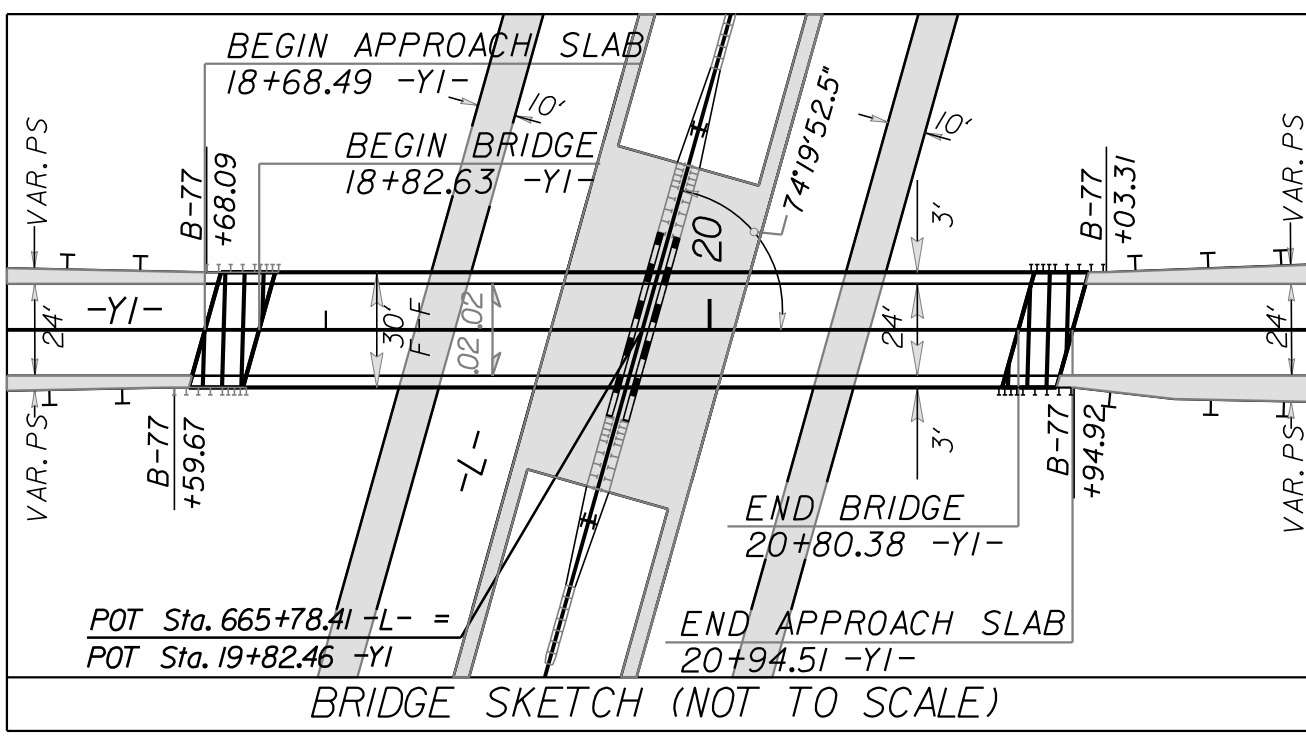
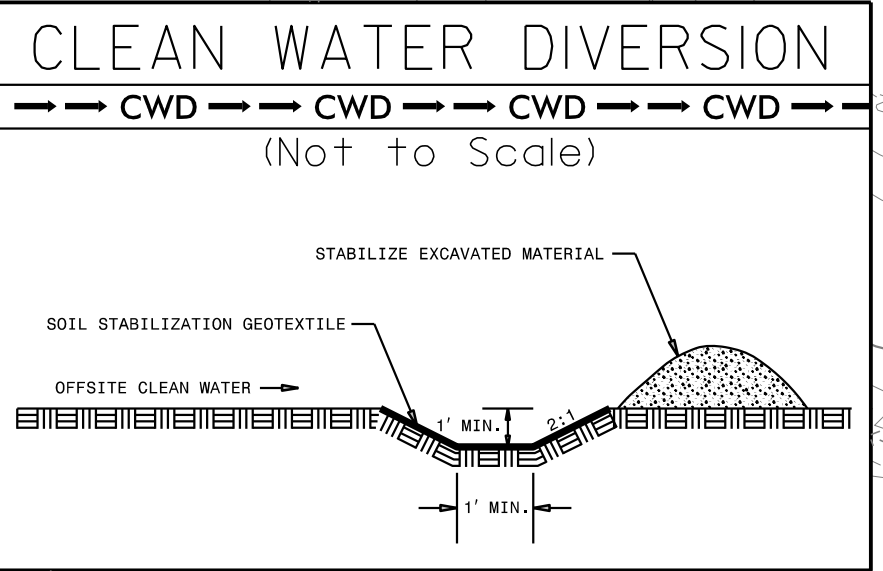


7/2/99

PROJECT REFERENCE NO. R-2707D	SHEET NO. EC-07/CONST.06
RW SHEET NO.	
ROADWAY DESIGN ENGINEER	HYDRAULICS ENGINEER



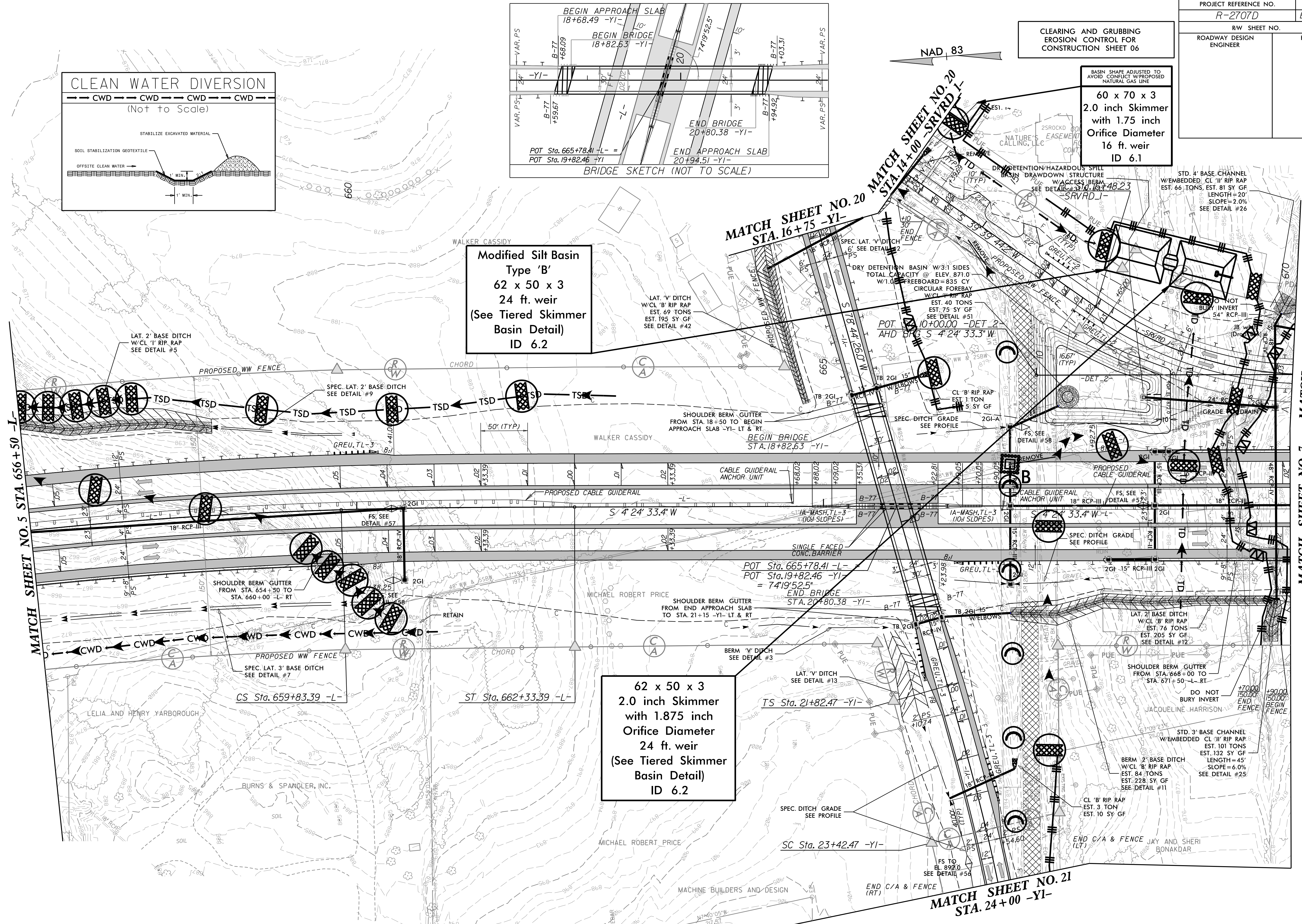
CLEARING AND GRUBBING
EROSION CONTROL FOR
CONSTRUCTION SHEET 06

BASIN SHAPE ADJUSTED TO
AVOID CONFLICT W/PROPOSED
NATURAL GAS LINE

60 x 70 x 3
2.0 inch Skimmer
with 1.75 inch
Orifice Diameter
16 ft. weir
ID 6.1

Modified Silt Basin
Type 'B'
62 x 50 x 3
24 ft. weir
(See Tiered Skimmer
Basin Detail)
ID 6.2

62 x 50 x 3
2.0 inch Skimmer
with 1.875 inch
Orifice Diameter
24 ft. weir
(See Tiered Skimmer
Basin Detail)
ID 6.2



MATCH SHEET NO. 5
STA. 656+50 -L-

MATCH SHEET NO. 20
STA. 14+00 -SRVRD-1-

MATCH SHEET NO. 7
STA. 18+71.37 -SRVRD-1-

MATCH SHEET NO. 21
STA. 24+00 -Y1-

INSTALL PIPE(S) IN JURISDICTIONAL AREAS WITHOUT IMPACTING STREAM UNTIL
AREA STABILIZED AND ACCORDING TO NCDOT BEST MANAGEMENT
PRACTICES FOR CONSTRUCTION AND MAINTENANCE ACTIVITIES MANUAL.

NOTE:
PLACE TEMPORARY ROCK SEDIMENT DAMS TYPE - B
AND TEMPORARY ROCK SILT CHECKS TYPE - A AT
DRAINAGE OUTLETS.