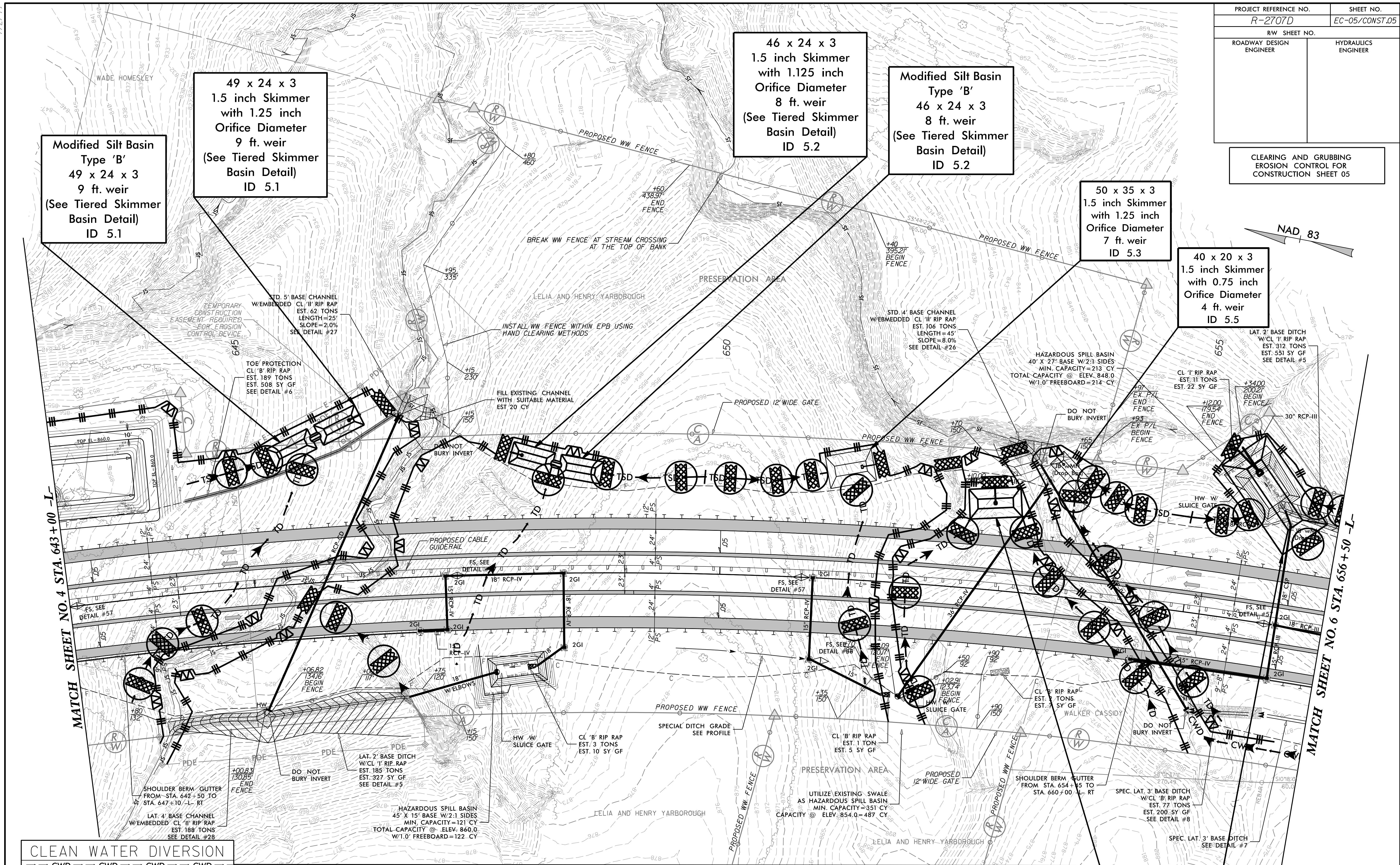


PROJECT REFERENCE NO.	SHEET NO.
R-2707D	EC-05/CONST.05
RW SHEET NO.	
ROADWAY DESIGN ENGINEER	HYDRAULICS ENGINEER

CLEARING AND GRUBBING EROSION CONTROL FOR CONSTRUCTION SHEET 05



Modified Silt Basin
Type 'B'
49 x 24 x 3
9 ft. weir
(See Tiered Skimmer
Basin Detail)
ID 5.1

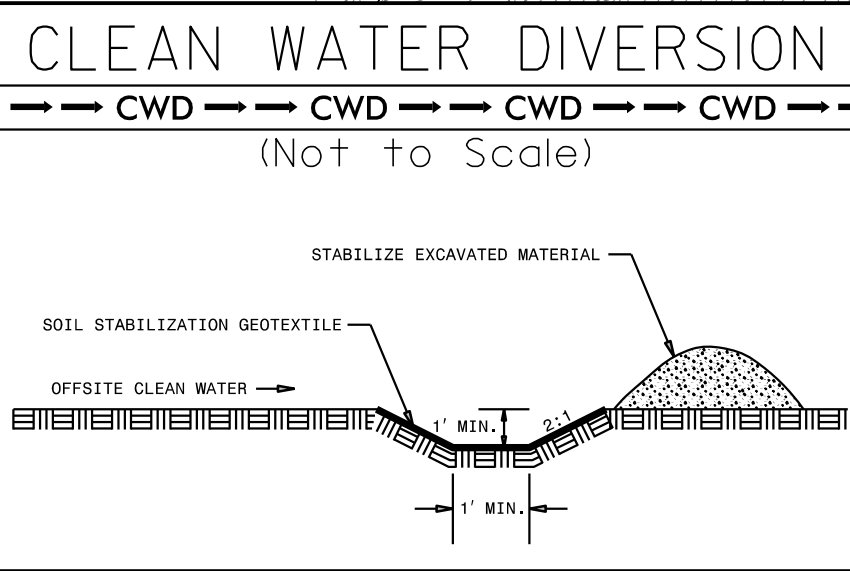
49 x 24 x 3
1.5 inch Skimmer
with 1.25 inch
Orifice Diameter
9 ft. weir
(See Tiered Skimmer
Basin Detail)
ID 5.1

46 x 24 x 3
1.5 inch Skimmer
with 1.125 inch
Orifice Diameter
8 ft. weir
(See Tiered Skimmer
Basin Detail)
ID 5.2

Modified Silt Basin
Type 'B'
46 x 24 x 3
8 ft. weir
(See Tiered Skimmer
Basin Detail)
ID 5.2

50 x 35 x 3
1.5 inch Skimmer
with 1.25 inch
Orifice Diameter
7 ft. weir
ID 5.3

40 x 20 x 3
1.5 inch Skimmer
with 0.75 inch
Orifice Diameter
4 ft. weir
ID 5.5



INSTALL PIPE(S) IN JURISDICTIONAL AREAS WITHOUT IMPACTING STREAM UNTIL AREA STABILIZED AND ACCORDING TO NCDOT BEST MANAGEMENT PRACTICES FOR CONSTRUCTION AND MAINTENANCE ACTIVITIES MANUAL.

NOTE:
PLACE TEMPORARY ROCK SEDIMENT DAMS TYPE - B AND TEMPORARY ROCK SILT CHECKS TYPE - A AT DRAINAGE OUTLETS.

32 x 56 x 3
1.5 inch Skimmer
with 1.25 inch
Orifice Diameter
7 ft. weir
ID 5.4

116 x 58 x 3
2.5 inch Skimmer
with 2.25 inch
Orifice Diameter
26 ft. weir
ID 5.6

MATCH SHEET NO. 5A

MATCH SHEET NO. 4 STA. 643+00 -L-

MATCH SHEET NO. 6 STA. 656+50 -L-

7/2/99

NAD 83