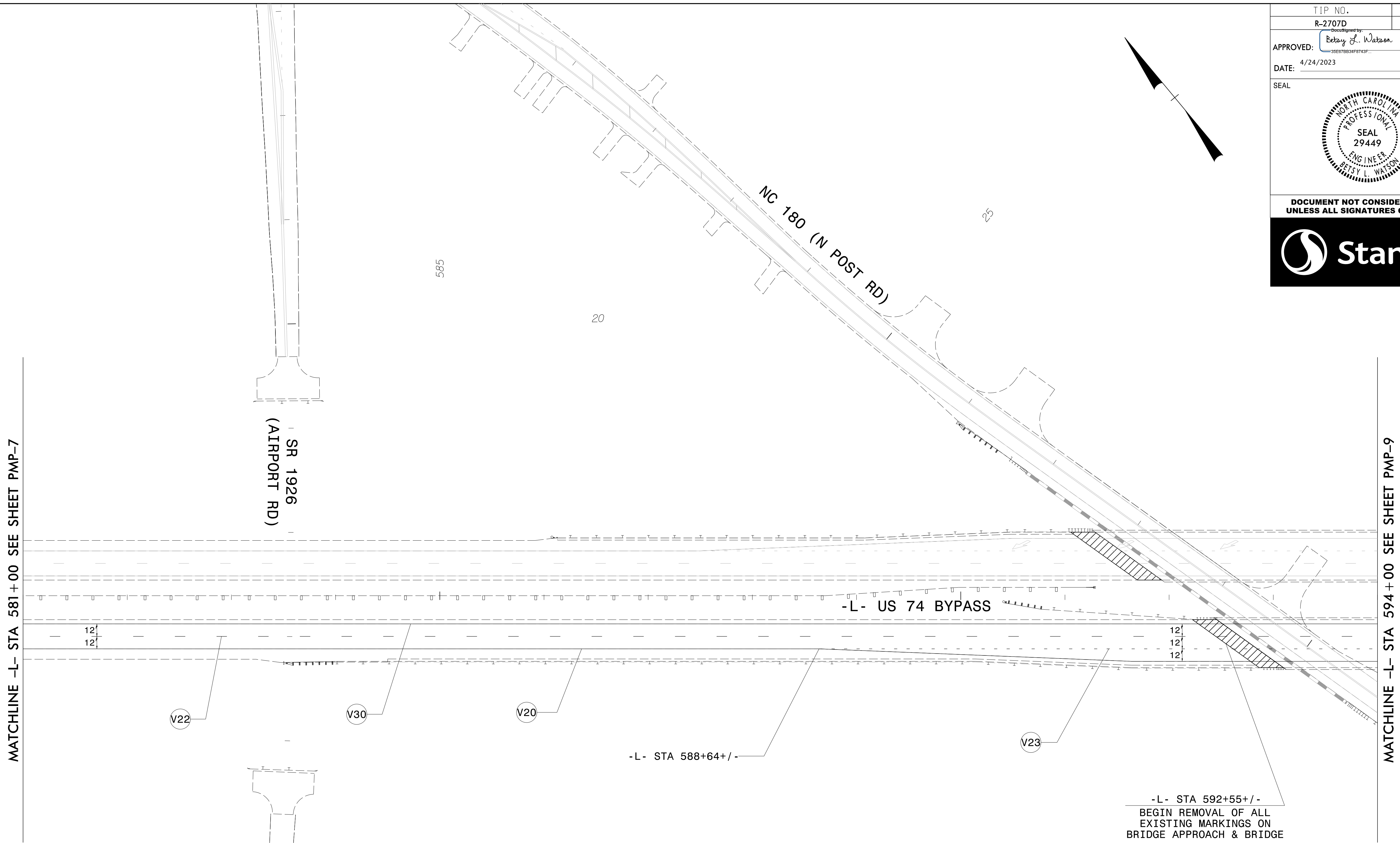
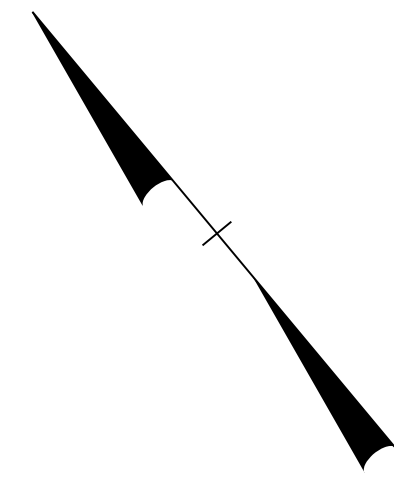


TIP NO. R-2707D	SHEET NO. PMP-8
APPROVED: <i>Betsy L. Watson</i>	
DATE: 4/24/2023	
SEAL	
DOCUMENT NOT CONSIDERED FINAL UNLESS ALL SIGNATURES COMPLETED	



MATCHLINE -L- STA 581+00 SEE SHEET PMP-7

MATCHLINE -L- STA 594+00 SEE SHEET PMP-9

SR 1926
(AIRPORT RD)

NC 180 (N POST RD)

-L- US 74 BYPASS

-L- STA 588+64+/-

-L- STA 592+55+/-
BEGIN REMOVAL OF ALL
EXISTING MARKINGS ON
BRIDGE APPROACH & BRIDGE

POLYUREA PAVEMENT MARKING LEGEND	
	WHITE EDGELINE (6")
	10 FT WHITE SKIP (6")
	3 FT-9 FT/SP WHITE MINISKIP (6")
	YELLOW EDGELINE (6")

PAVEMENT MARKING DETAIL

\$\$\$\$\$SYTIME\$\$\$\$\$
\$\$\$\$\$DDGN\$\$\$\$\$
\$\$\$\$\$USERNAME\$\$\$\$\$