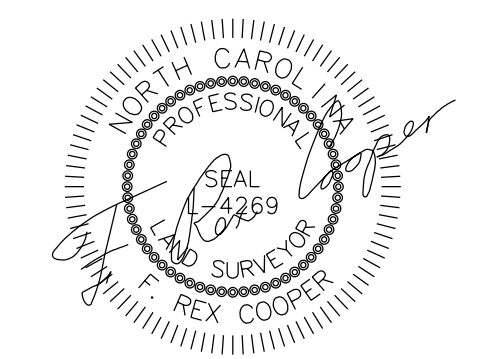


Location and Surveys



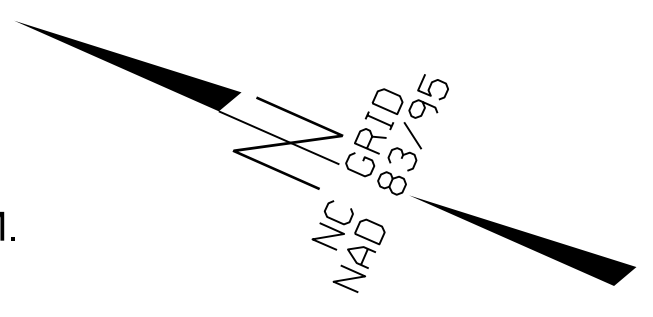
801 Jones Franklin Road
Raleigh, NC 27606
License No. F-0672
www.stantec.com



DOCUMENT NOT CONSIDERED FINAL UNLESS ALL SIGNATURES COMPLETED

NOTES:

1. IF FURTHER INFORMATION REGARDING PROJECT CONTROL IS NEEDED PLEASE CONTACT THE LOCATION AND SURVEYS UNIT.
2. PROJECT CONTROL WAS ESTABLISHED USING GNSS, THE GLOBAL NAVIGATION SATELLITE SYSTEM.

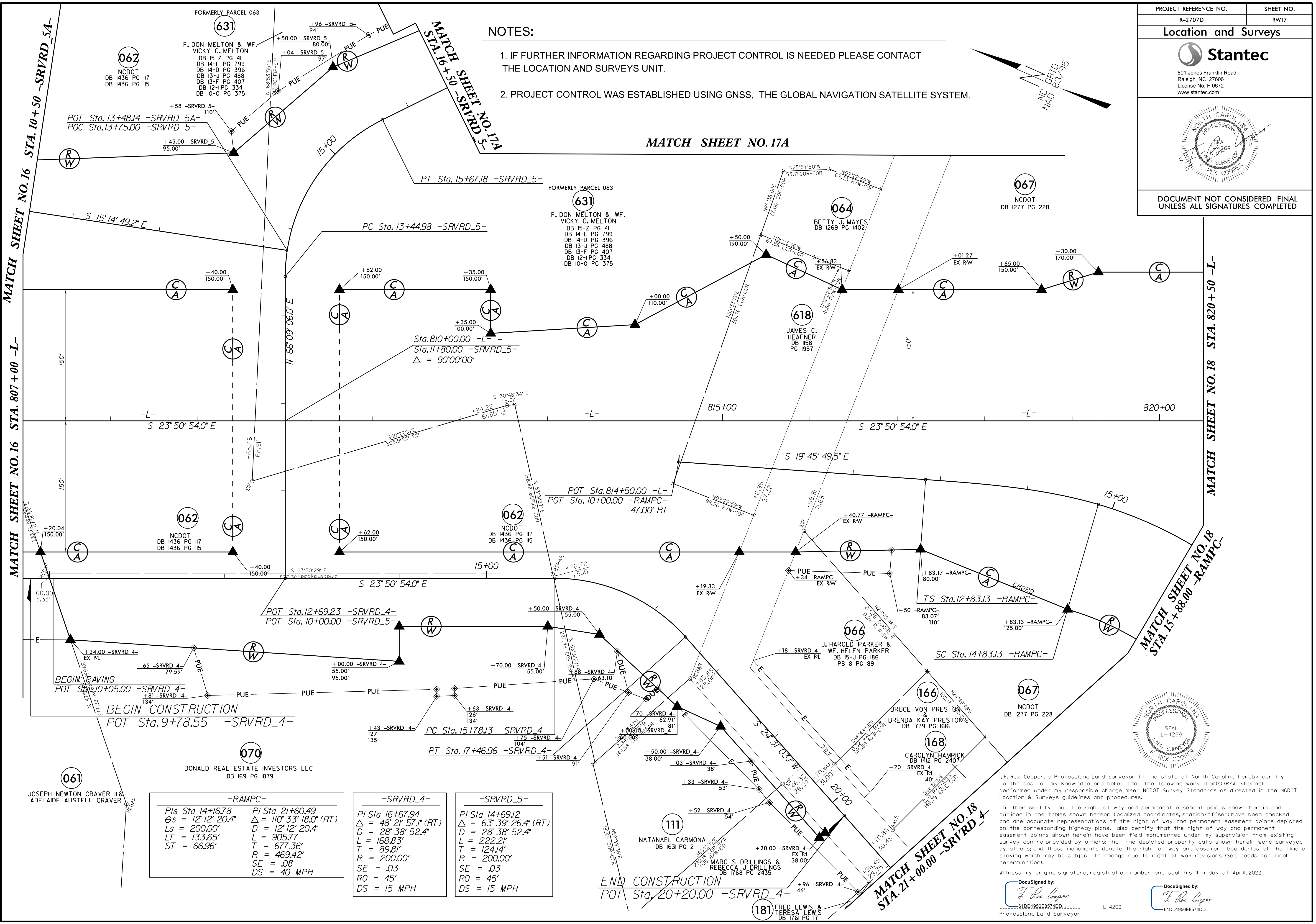


MATCH SHEET NO. 17A

MATCH SHEET NO. 18 STA. 820+50 -L-

MATCH SHEET NO. 18 STA. 15+88.00 -RAMPC-

MATCH SHEET NO. 18 STA. 21+00.00 -SRVRD_4-



REVISIONS

MATCH SHEET NO. 16 STA. 807+00 -L-

MATCH SHEET NO. 16 STA. 10+50 -SRVRD_5A-

MATCH SHEET NO. 16 STA. 10+50 -SRVRD_5A-

-RAMPC-	
PIs Sta 14+16.78	PI Sta 21+00.00
Os = 12' 12" 20.4"	Δ = 110° 33' 18.0" (RT)
Ls = 200.00'	D = 12' 12" 20.4"
LT = 133.65'	L = 905.77'
ST = 66.96'	T = 677.36'
	R = 469.42'
	SE = .08
	DS = 40 MPH

-SRVRD_4-	
PI Sta 16+67.94	Δ = 48° 21' 57.1" (RT)
D = 28' 38" 52.4"	L = 168.83'
L = 168.83'	T = 124.14'
R = 200.00'	R = 200.00'
SE = .03	SE = .03
RO = 45'	RO = 45'
DS = 15 MPH	DS = 15 MPH

-SRVRD_5-	
PI Sta 14+69.12	Δ = 63° 39' 26.4" (RT)
D = 28' 38" 52.4"	L = 222.21'
L = 222.21'	T = 124.14'
R = 200.00'	R = 200.00'
SE = .03	SE = .03
RO = 45'	RO = 45'
DS = 15 MPH	DS = 15 MPH

I, Rex Cooper, a Professional Land Surveyor in the state of North Carolina hereby certify to the best of my knowledge and belief that the following work (Items) (R/W Staking) performed under my responsible charge meet NCDOT Survey Standards as directed in the NCDOT Location & Surveys guidelines and procedures.

I further certify that the right of way and permanent easement points shown herein and outlined in the tables shown hereon (localized coordinates, station/offsets) have been checked and are accurate representations of the right of way and permanent easement points depicted on the corresponding highway plans. I also certify that the right of way and permanent easement points shown herein have been field monumented under my supervision from existing survey control provided by others; that the depicted property data shown herein were surveyed by others; and these monuments denote the right of way and easement boundaries at the time of staking which may be subject to change due to right of way revisions (See deeds for final determination).

Witness my original signature, registration number and seal this 4th day of April, 2022.

DocuSigned by:
F. Rex Cooper
01001950E8574DD...
Professional Land Surveyor

DocuSigned by:
F. Rex Cooper
01001950E8574DD...
Professional Land Surveyor

6/2/22