


SURVEY CONTROL SHEET

W/ EXISTING CENTERLINE ALIGNMENTS PRIOR TO CONSTRUCTION

PROJECT REFERENCE NO. R-2707D	SHEET NO. RW02C-3
Location and Surveys	
	
DOCUMENT NOT CONSIDERED FINAL UNLESS ALL SIGNATURES COMPLETED	

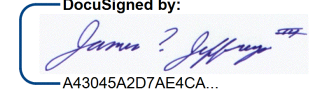
BY28					BY29				
POINT	DESC.	NORTH	EAST	ELEVATION	POINT	DESC.	NORTH	EAST	ELEVATION
20	R2707-20	566205.1970	1262995.8520	755.61	Y421	BY28-421	565014.3985	1261037.4382	855.49
19	R2707-19	565153.7430	1261859.6180	836.03	423	BY29-423	564790.0813	1261153.6506	830.28
420	BY28-420	565105.6997	1261502.6081	852.53					
421	BY28-421	565014.3985	1261037.4382	855.49					
422	BY28-422	564429.2970	1260392.8572	874.01					

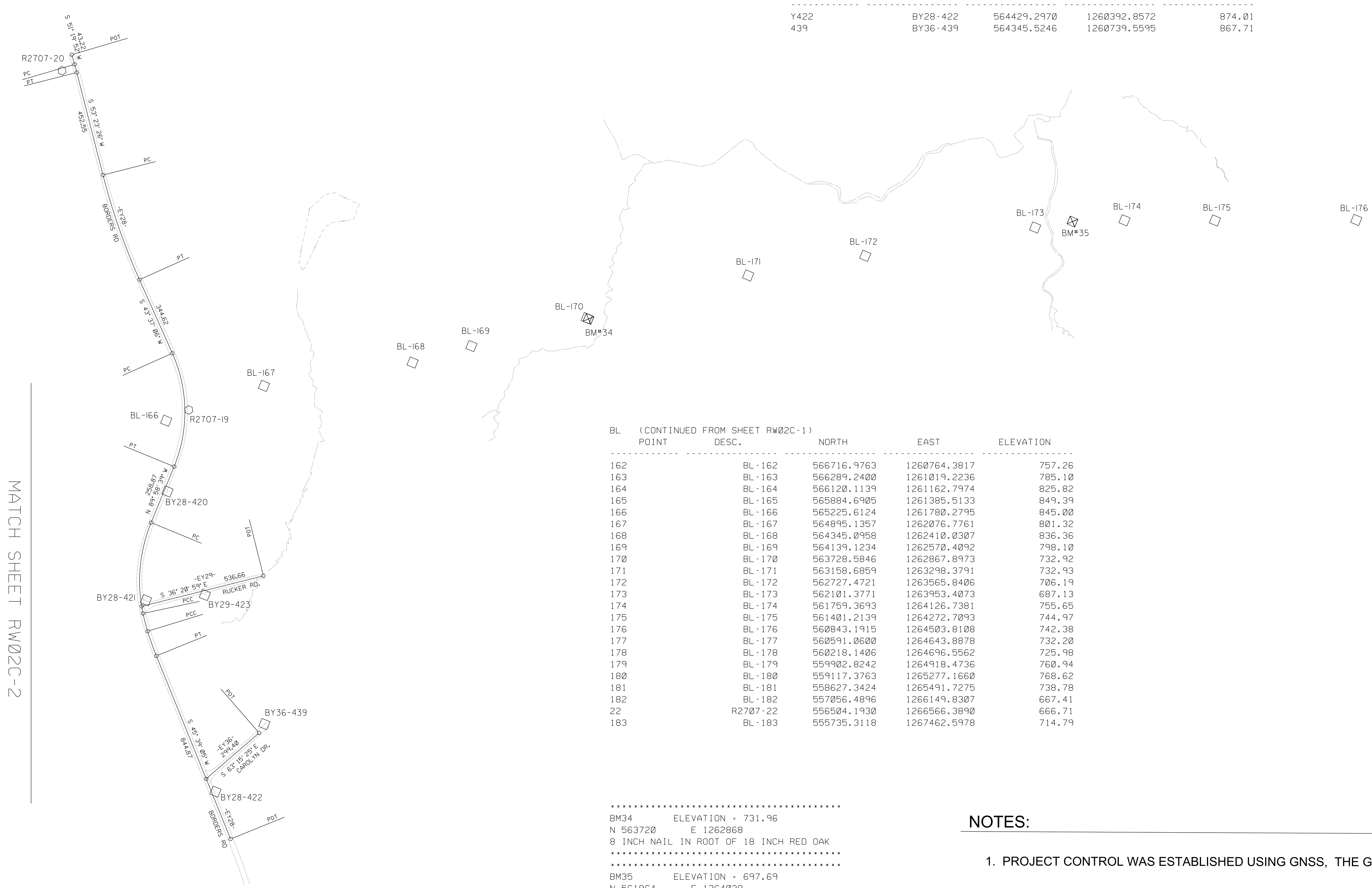
BY36				
POINT	DESC.	NORTH	EAST	ELEVATION
Y422	BY28-422	564429.2970	1260392.8572	874.01
439	BY36-439	564345.5246	1260739.5595	867.71

I, James I. Jeffreys, PE, PLS, certify that the Project Control was provided to NCDOT by others. The following information was used to perform the survey:

Datum/Epoch: NAD83/1995
Localized around: M 77
Northing: 573127.522
Easting: 1242971.658
Combined grid factor: 0.99984410
Units: US Survey Feet

This day 12/19/2022

DocuSigned by:

4A3045A207AE4CA
James I. Jeffreys, PE, PLS
Professional Land Surveyor L-3828



BL (CONTINUED FROM SHEET RW02C-1)

POINT	DESC.	NORTH	EAST	ELEVATION
162	BL-162	566716.9763	1260764.3817	757.26
163	BL-163	566289.2400	1261019.2236	785.10
164	BL-164	566120.1139	1261162.7974	825.82
165	BL-165	565984.6905	1261385.5133	849.39
166	BL-166	565225.6124	1261780.2795	845.00
167	BL-167	564895.1357	1262076.7761	801.32
168	BL-168	564345.0958	1262410.0307	836.36
169	BL-169	564139.1234	1262570.4092	798.10
170	BL-170	563728.5846	1262867.8973	732.92
171	BL-171	563158.6859	1263298.3791	732.93
172	BL-172	562727.4721	1263565.8406	706.19
173	BL-173	562101.3771	1263953.4073	687.13
174	BL-174	561759.3693	1264126.7381	755.65
175	BL-175	561401.2139	1264272.7093	744.97
176	BL-176	560843.1915	1264503.8108	742.38
177	BL-177	560591.0600	1264643.8878	732.20
178	BL-178	560218.1406	1264696.5562	725.98
179	BL-179	559902.8242	1264918.4736	760.94
180	BL-180	559117.3763	1265277.1660	768.62
181	BL-181	558627.3424	1265491.7275	738.78
182	BL-182	557056.4896	1266149.8307	667.41
22	R2707-22	565504.1930	1266566.3890	666.71
183	BL-183	555735.3118	1267462.5978	714.79

.....
 BM34 ELEVATION = 731.96
 N 563720 E 1262868
 8 INCH NAIL IN ROOT OF 18 INCH RED OAK

 BM35 ELEVATION = 697.69
 N 561964 E 1264038
 8 INCH NAIL IN TOP OF 8 INCH BEECH STUMP

NOTES:

1. PROJECT CONTROL WAS ESTABLISHED USING GNSS, THE GLOBAL NAVIGATION SATELLITE SYSTEM.
2. THE SURVEY CONTROL DATA FOR THIS PROJECT HAS BEEN COMPILED FROM VARIOUS SOURCES. IF FURTHER INFORMATION REGARDING PROJECT CONTROL IS NEEDED, PLEASE CONTACT THE LOCATION AND SURVEYS UNIT.

REVISIONS

MATCH SHEET RW02C-2

MATCH SHEET RW02C-4