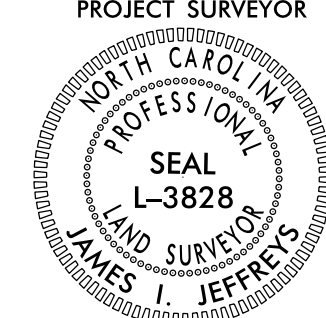


SURVEY CONTROL SHEET

W/EXISTING CENTERLINE ALIGNMENTS PRIOR TO CONSTRUCTION

PROJECT REFERENCE NO. R-2707D	SHEET NO. RW02C-2
Location and Surveys	
	
DOCUMENT NOT CONSIDERED FINAL UNLESS ALL SIGNATURES COMPLETED	

BY25 POINT	DESC.	NORTH	EAST	ELEVATION
18	R2707-18	570787.0670	1260246.2300	881.63
416	BY25-416	570853.6169	1260014.1804	883.91
17	R2707-17	571181.2060	1259048.9390	903.36
413	BY25-413	571280.9539	1258568.5745	912.69
414	BY25-414	570960.7740	1257855.4953	918.54

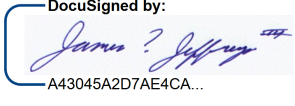
BY26 POINT	DESC.	NORTH	EAST	ELEVATION
Y416	BY25-416	570853.6169	1260014.1804	883.91
417	BY26-417	570425.4383	1259904.7737	882.90

BY27 POINT	DESC.	NORTH	EAST	ELEVATION
418	BY27-418	567984.3787	1260312.7643	809.19
419	BY27-419	567750.4042	1260174.3200	781.83
Y159	BL-159	567742.2638	1260043.5265	803.31

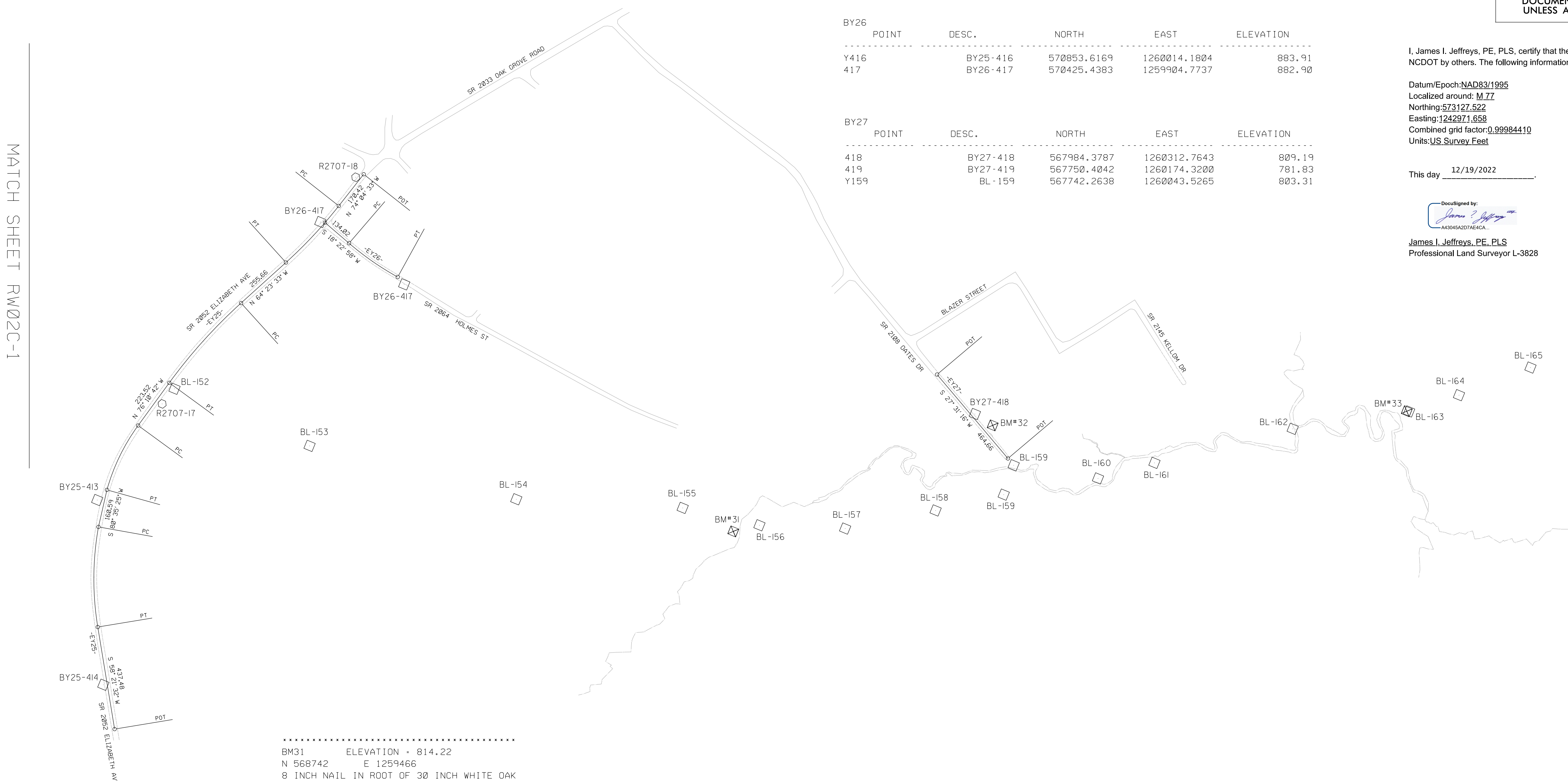
I, James I. Jeffreys, PE, PLS, certify that the Project Control was provided to NCDOT by others. The following information was used to perform the survey:

Datum/Epoch: NAD83/1995
 Localized around: M77
 Northing: 573127.522
 Easting: 1242971.658
 Combined grid factor: 0.99984410
 Units: US Survey Feet

This day 12/19/2022

DocuSigned by:

 A43045A207AEACA

James I. Jeffreys, PE, PLS
 Professional Land Surveyor L-3828



.....
 BM31 ELEVATION - 814.22
 N 568742 E 1259466
 8 INCH NAIL IN ROOT OF 30 INCH WHITE OAK

 BM32 ELEVATION - 800.60
 N 567897 E 1260297
 8 INCH NAIL IN ROOT OF 20 INCH RED OAK

 BM33 ELEVATION - 784.14
 N 566299 E 1261016
 8 INCH NAIL IN BASE OF 8 INCH RED OAK

NOTES:

- PROJECT CONTROL WAS ESTABLISHED USING GNSS, THE GLOBAL NAVIGATION SATELLITE SYSTEM.
- THE SURVEY CONTROL DATA FOR THIS PROJECT HAS BEEN COMPILED FROM VARIOUS SOURCES. IF FURTHER INFORMATION REGARDING PROJECT CONTROL IS NEEDED, PLEASE CONTACT THE LOCATION AND SURVEYS UNIT.

REVISIONS

MATCH SHEET RW02C-1

MATCH SHEET RW02C-3