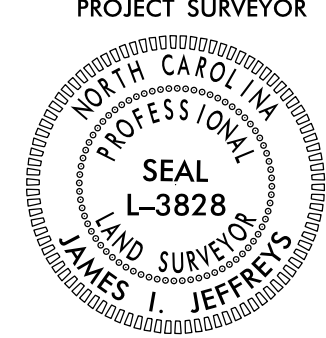


SURVEY CONTROL SHEET

W/EXISTING CENTERLINE ALIGNMENTS PRIOR TO CONSTRUCTION

PROJECT REFERENCE NO.	SHEET NO.
R-2707D	RW02C-1
Location and Surveys	
	
DOCUMENT NOT CONSIDERED FINAL UNLESS ALL SIGNATURES COMPLETED	

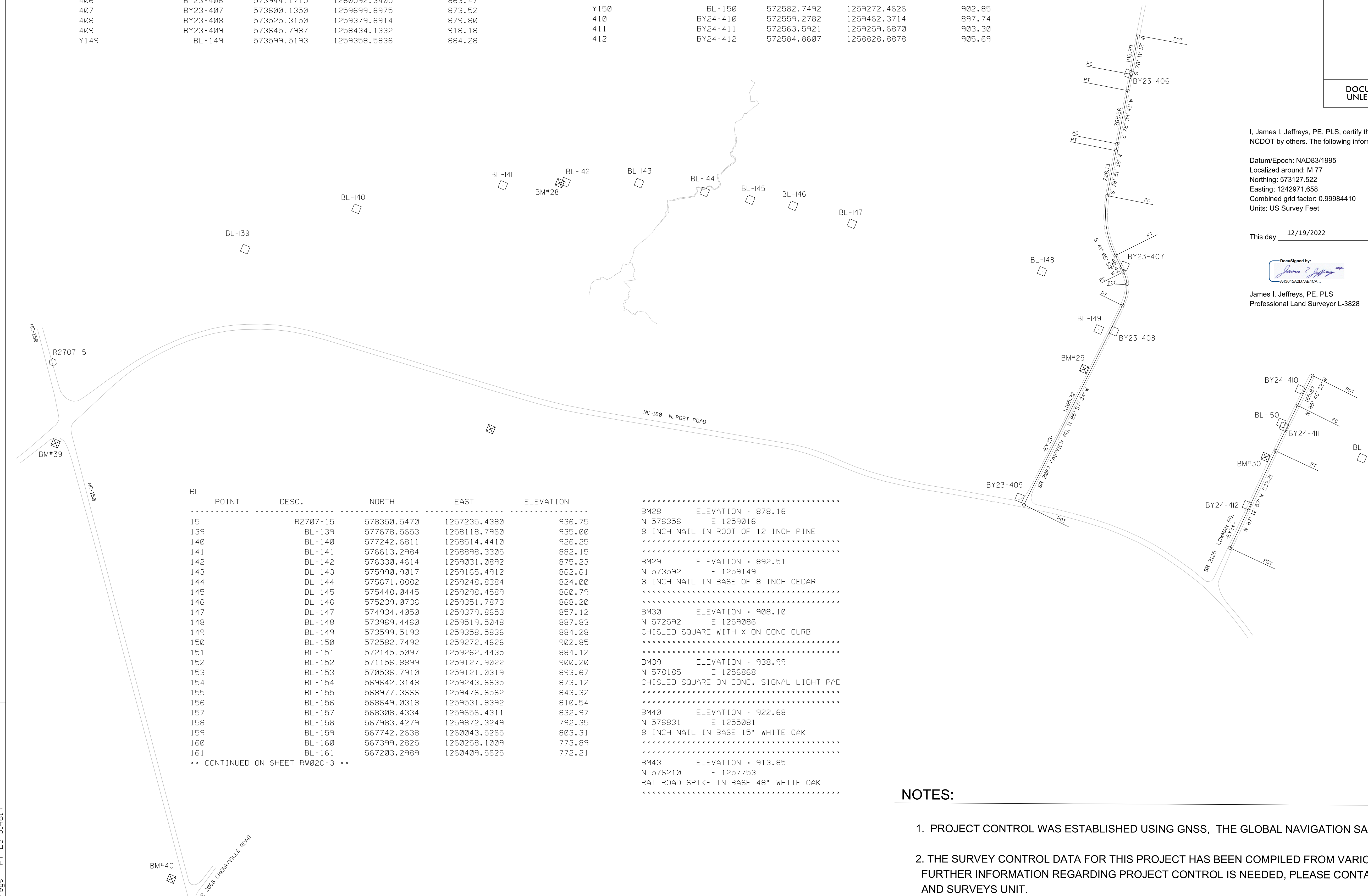
BY23 POINT	DESC.	NORTH	EAST	ELEVATION
406	BY23-406	573944.1715	1260592.3405	863.47
407	BY23-407	573600.1350	1259699.6975	873.52
408	BY23-408	573525.3150	1259379.6914	879.80
409	BY23-409	573645.7987	1258434.1332	918.18
Y149	BL-149	573599.5193	1259358.5836	884.28

BY24 POINT	DESC.	NORTH	EAST	ELEVATION
Y150	BL-150	572582.7492	1259272.4626	902.85
410	BY24-410	572559.2782	1259462.3714	897.74
411	BY24-411	572563.5921	1259259.6870	903.30
412	BY24-412	572584.8607	1258828.8878	905.69

BL POINT	DESC.	NORTH	EAST	ELEVATION
15	R2707-15	578350.5470	1257235.4380	936.75
139	BL-139	577678.5653	1258118.7960	935.00
140	BL-140	577242.6811	1258514.4410	926.25
141	BL-141	576613.2984	1258898.3305	882.15
142	BL-142	576330.4614	1259031.0892	875.23
143	BL-143	575990.9017	1259165.4912	862.61
144	BL-144	575671.8892	1259248.8384	824.00
145	BL-145	575448.0445	1259298.4589	860.79
146	BL-146	575239.0736	1259351.7873	868.20
147	BL-147	574934.4050	1259379.8653	857.12
148	BL-148	573969.4460	1259519.5048	887.83
149	BL-149	573599.5193	1259358.5836	884.28
150	BL-150	572582.7492	1259272.4626	902.85
151	BL-151	572145.5097	1259262.4435	884.12
152	BL-152	571156.8899	1259127.9022	900.20
153	BL-153	570536.7910	1259121.0319	893.67
154	BL-154	569642.3148	1259243.6635	873.12
155	BL-155	568977.3666	1259476.6562	843.32
156	BL-156	568649.0318	1259531.8392	810.54
157	BL-157	568308.4334	1259656.4311	832.97
158	BL-158	567983.4279	1259872.3249	792.35
159	BL-159	567742.2638	1260043.5265	803.31
160	BL-160	567399.2825	1260258.1009	773.89
161	BL-161	567203.2989	1260409.5625	772.21

** CONTINUED ON SHEET RW02C-3 **

- *****
- BM28 ELEVATION = 878.16
- N 576356 E 1259016
- 8 INCH NAIL IN ROOT OF 12 INCH PINE
- *****
- BM29 ELEVATION = 892.51
- N 573592 E 1259149
- 8 INCH NAIL IN BASE OF 8 INCH CEDAR
- *****
- BM30 ELEVATION = 908.10
- N 572592 E 1259086
- CHISLED SQUARE WITH X ON CONC CURB
- *****
- BM39 ELEVATION = 938.99
- N 578185 E 1256868
- CHISLED SQUARE ON CONC. SIGNAL LIGHT PAD
- *****
- BM40 ELEVATION = 922.68
- N 576831 E 1255081
- 8 INCH NAIL IN BASE 15" WHITE OAK
- *****
- BM43 ELEVATION = 913.85
- N 576210 E 1257753
- RAILROAD SPIKE IN BASE 48" WHITE OAK
- *****



I, James I. Jeffreys, PE, PLS, certify that the Project Control was provided to NCDOT by others. The following information was used to perform the survey:

Datum/Epoch: NAD83/1995
 Localized around: M 77
 Northing: 573127.522
 Easting: 1242971.658
 Combined grid factor: 0.99984410
 Units: US Survey Feet

This day 12/19/2022

DocuSigned by:

 A43045A207AE64CA

James I. Jeffreys, PE, PLS
 Professional Land Surveyor L-3828

MATCH SHEET RW02C-2

NOTES:

- PROJECT CONTROL WAS ESTABLISHED USING GNSS, THE GLOBAL NAVIGATION SATELLITE SYSTEM.
- THE SURVEY CONTROL DATA FOR THIS PROJECT HAS BEEN COMPILED FROM VARIOUS SOURCES. IF FURTHER INFORMATION REGARDING PROJECT CONTROL IS NEEDED, PLEASE CONTACT THE LOCATION AND SURVEYS UNIT.

REVISIONS

I:\DEC-2022\1251\2707d\LS12-22-xxx-rw-Contr-ol-Sheets\2707d.ls-rw02c-1.dgn
 J. Jeffreys AT LS-314619