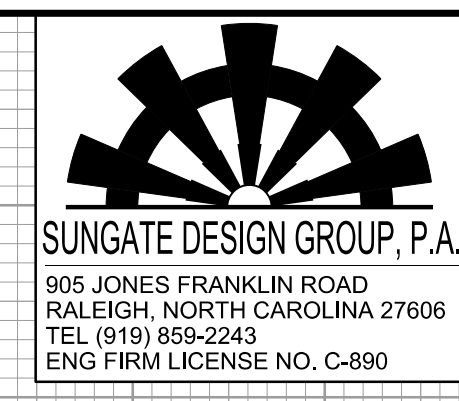


5/28/2023

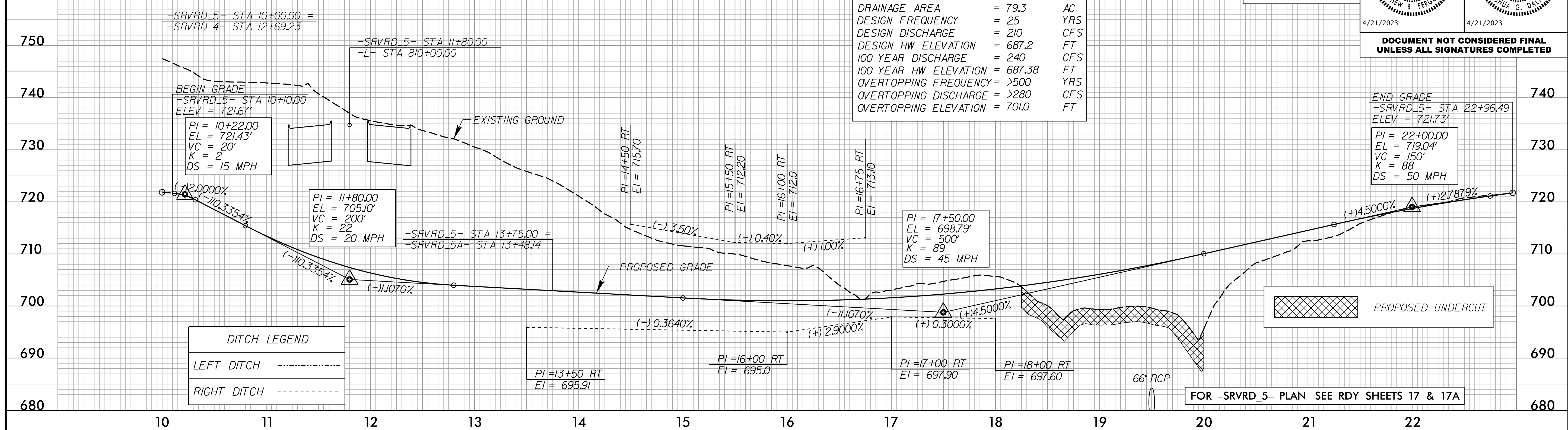
-SRVRD_5-



PROJECT REFERENCE NO. R-2707D	SHEET NO. 52
ROADWAY DESIGN ENGINEER MATTHEW B. FERGUSON 04480	HYDRAULICS ENGINEER JOHUA G. DALTON 06971
4/21/2023	4/21/2023

DOCUMENT NOT CONSIDERED FINAL
UNLESS ALL SIGNATURES COMPLETED

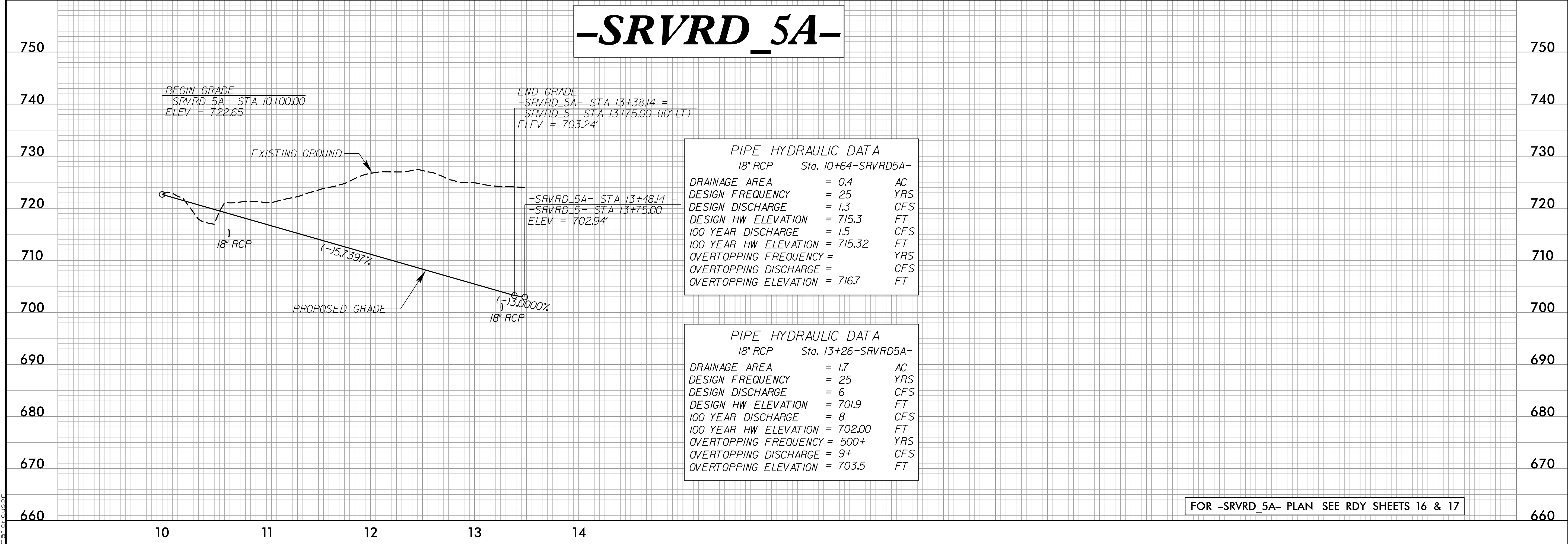
66" RCP	Sta. 19+49-SRVRD5-
DRAINAGE AREA	= 79.3 AC
DESIGN FREQUENCY	= 25 YRS
DESIGN DISCHARGE	= 210 CFS
DESIGN HW ELEVATION	= 687.2 FT
100 YEAR DISCHARGE	= 240 CFS
100 YEAR HW ELEVATION	= 687.38 FT
OVERTOPPING FREQUENCY	= >500 YRS
OVERTOPPING DISCHARGE	= >280 CFS
OVERTOPPING ELEVATION	= 701.0 FT



-SRVRD_5A-

18" RCP	Sta. 10+64-SRVRD5A-
DRAINAGE AREA	= 0.4 AC
DESIGN FREQUENCY	= 25 YRS
DESIGN DISCHARGE	= 1.3 CFS
DESIGN HW ELEVATION	= 715.3 FT
100 YEAR DISCHARGE	= 1.5 CFS
100 YEAR HW ELEVATION	= 715.32 FT
OVERTOPPING FREQUENCY	= YRS
OVERTOPPING DISCHARGE	= CFS
OVERTOPPING ELEVATION	= 716.7 FT

18" RCP	Sta. 13+26-SRVRD5A-
DRAINAGE AREA	= 1.7 AC
DESIGN FREQUENCY	= 25 YRS
DESIGN DISCHARGE	= 6 CFS
DESIGN HW ELEVATION	= 701.9 FT
100 YEAR DISCHARGE	= 8 CFS
100 YEAR HW ELEVATION	= 702.00 FT
OVERTOPPING FREQUENCY	= 500+ YRS
OVERTOPPING DISCHARGE	= 9+ CFS
OVERTOPPING ELEVATION	= 703.5 FT



4/15/2023
C:\Users\mferguson\documents\pwworking\dms42562\R2707D_RDY_PEL_PSH3.dgn
mferguson