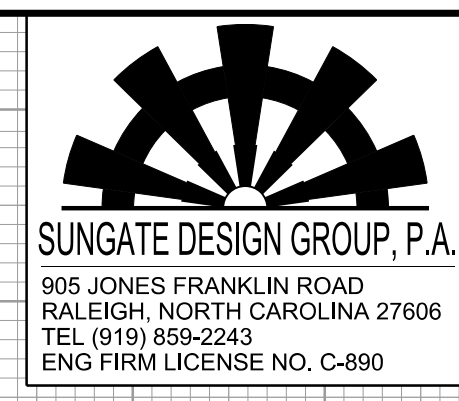


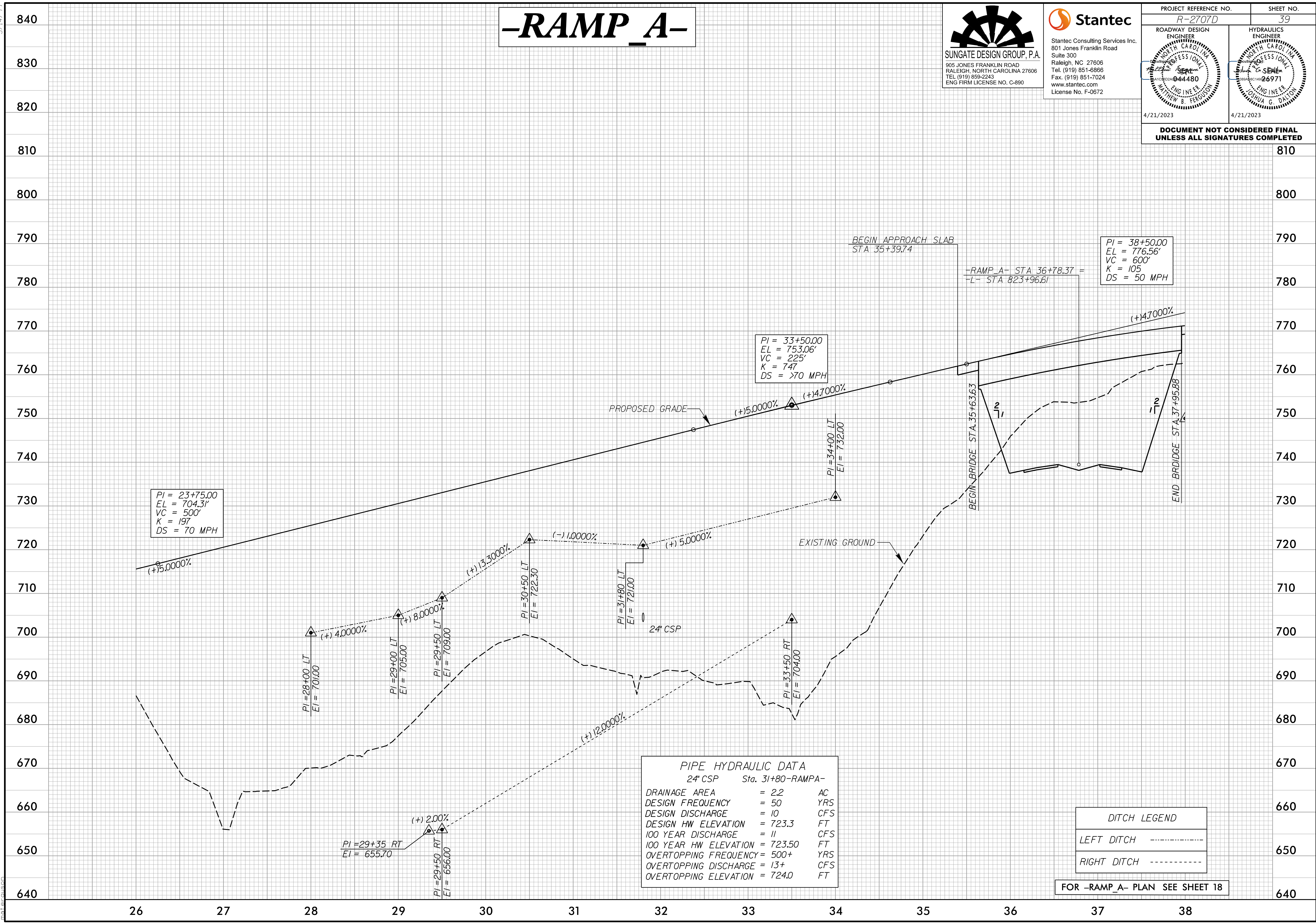
5/14/99

-RAMP A-



PROJECT REFERENCE NO. R-2707D	SHEET NO. 39
ROADWAY DESIGN ENGINEER MATTHEW B. FERGUSON LICENSE NO. 04480 4/21/2023	HYDRAULICS ENGINEER JOHN G. DALTON LICENSE NO. 26971 4/21/2023

DOCUMENT NOT CONSIDERED FINAL
UNLESS ALL SIGNATURES COMPLETED



PI = 23+75.00
EL = 704.31'
VC = 500'
K = 197
DS = 70 MPH

PI = 33+50.00
EL = 753.06'
VC = 225'
K = 747
DS = >70 MPH

PI = 38+50.00
EL = 776.56'
VC = 600'
K = 105
DS = 50 MPH

PIPE HYDRAULIC DATA		
24" CSP Sta. 31+80-RAMPA-		
DRAINAGE AREA	= 2.2	AC
DESIGN FREQUENCY	= 50	YRS
DESIGN DISCHARGE	= 10	CFS
DESIGN HW ELEVATION	= 723.3	FT
100 YEAR DISCHARGE	= 11	CFS
100 YEAR HW ELEVATION	= 723.50	FT
OVERTOPPING FREQUENCY	= 500+	YRS
OVERTOPPING DISCHARGE	= 13+	CFS
OVERTOPPING ELEVATION	= 724.0	FT

DITCH LEGEND	
LEFT DITCH	-----
RIGHT DITCH	-----

FOR -RAMP A- PLAN SEE SHEET 18

4/15/2023
c:\users\matferguson\documents\pwworking\dms42562\R2707D_R0Y_PEL_PSH2.dgn
matferguson