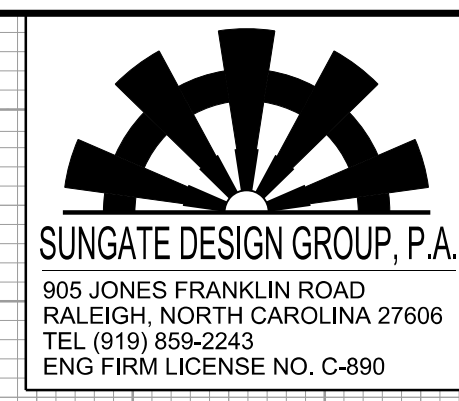


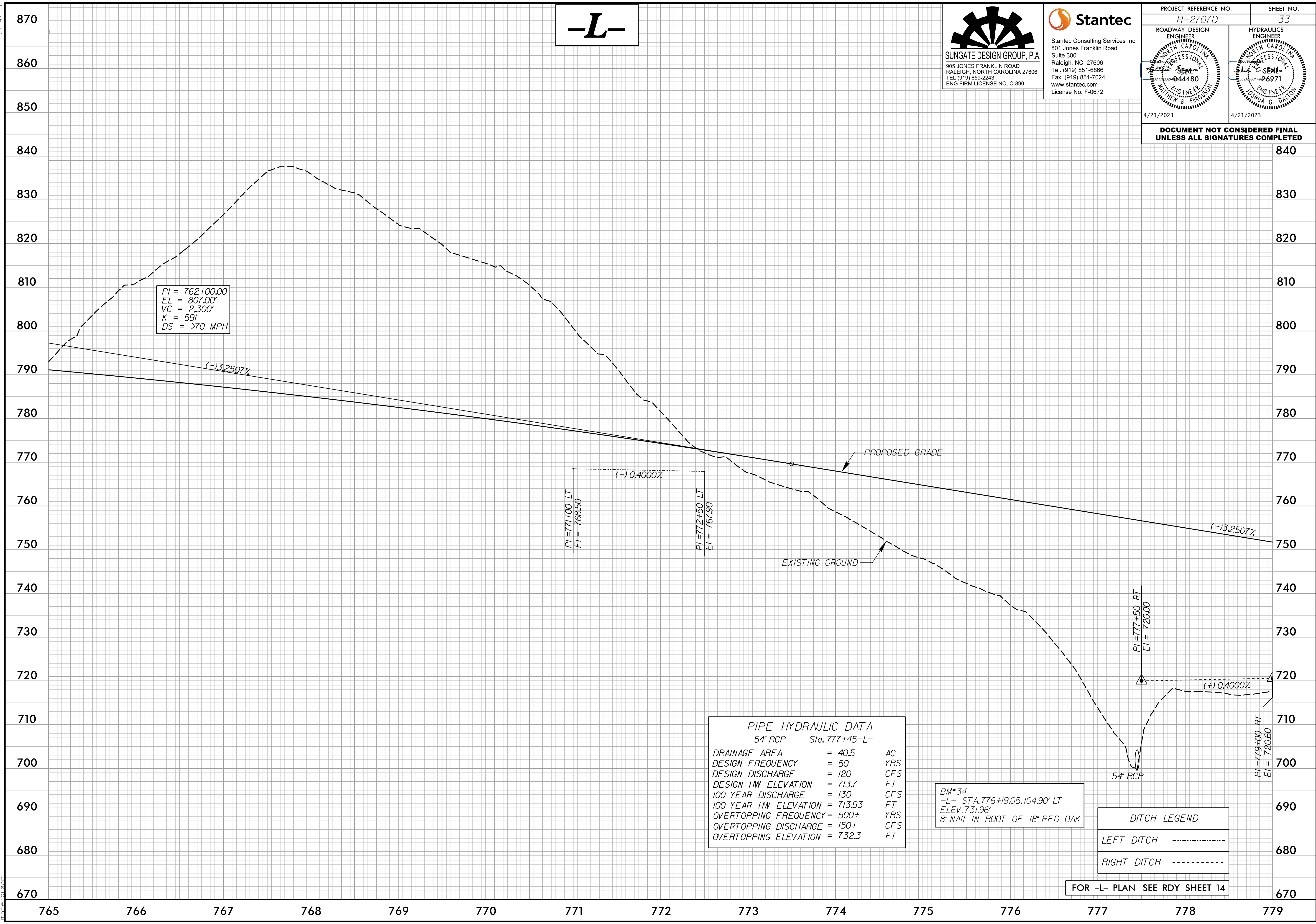
5/14/99

-L-



PROJECT REFERENCE NO. R-2707D	SHEET NO. 33
ROADWAY DESIGN ENGINEER MATTHEW B. FERGUSON LICENSE NO. 04480 4/21/2023	HYDRAULICS ENGINEER JOHN G. DALTON LICENSE NO. 26971 4/21/2023

**DOCUMENT NOT CONSIDERED FINAL
UNLESS ALL SIGNATURES COMPLETED**



PI = 762+00.00
 EL = 807.00'
 VC = 2,300'
 K = 59
 DS = >70 MPH

PIPE HYDRAULIC DATA		
54" RCP Sta. 777+45-L-		
DRAINAGE AREA	= 40.5	AC
DESIGN FREQUENCY	= 50	YRS
DESIGN DISCHARGE	= 120	CFS
DESIGN HW ELEVATION	= 713.7	FT
100 YEAR DISCHARGE	= 130	CFS
100 YEAR HW ELEVATION	= 713.93	FT
OVERTOPPING FREQUENCY	= 500+	YRS
OVERTOPPING DISCHARGE	= 150+	CFS
OVERTOPPING ELEVATION	= 732.3	FT

BM*34
 -L- STA. 776+19.05, 104.90' LT
 ELEV. 731.96'
 8" NAIL IN ROOT OF 18" RED OAK

DITCH LEGEND	
LEFT DITCH	-----
RIGHT DITCH	-----

FOR -L- PLAN SEE RDY SHEET 14

4/15/2023 c:\users\mferguson\documents\pwworking\dms42562\2707D_RDY_PEL_PSHI.dgn