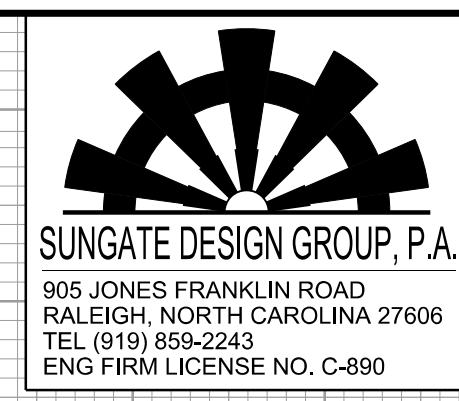


5/14/99

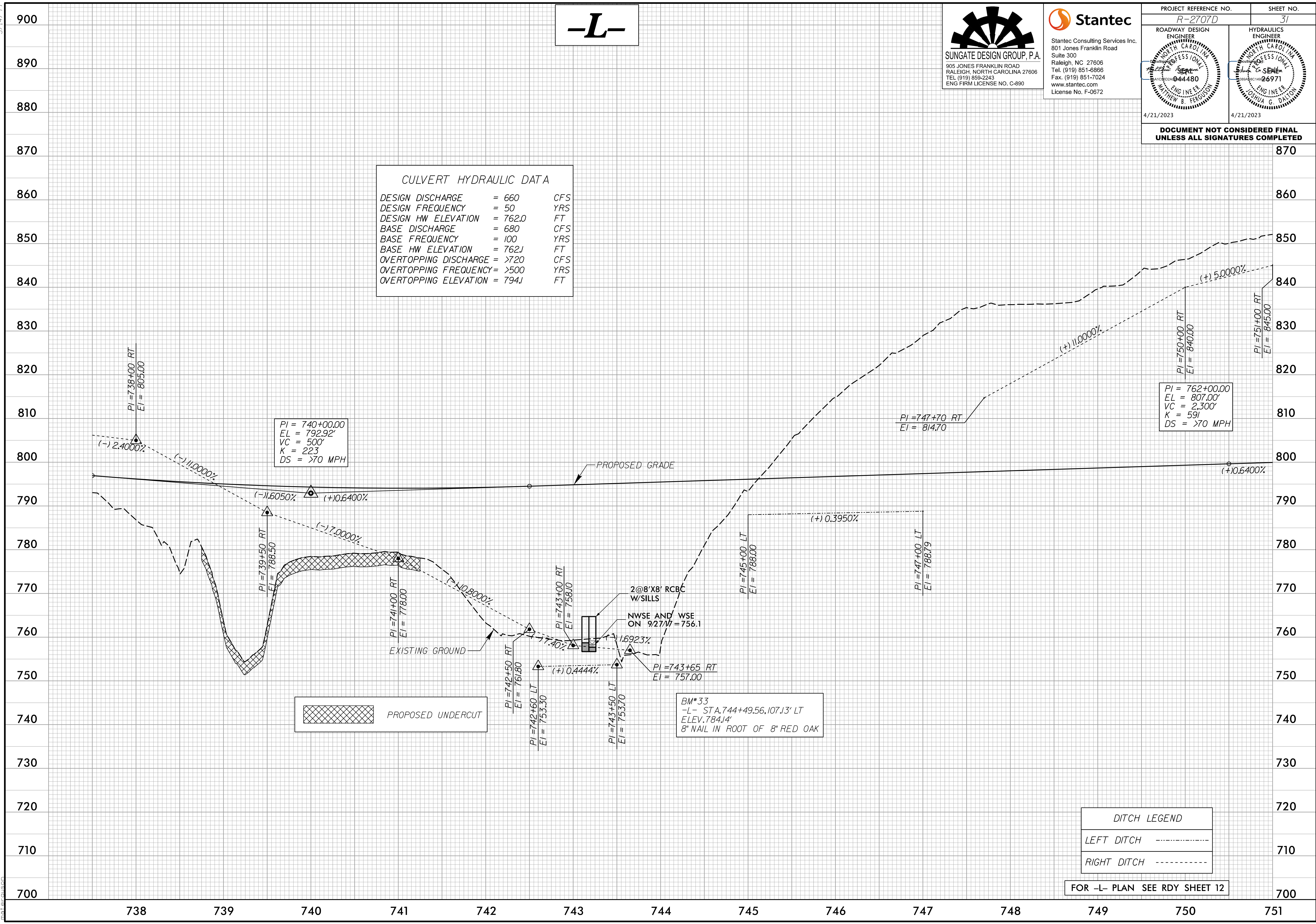
-L-



PROJECT REFERENCE NO. R-2707D	SHEET NO. 31
ROADWAY DESIGN ENGINEER MATTHEW B. FERGUSON LICENSE NO. 04480 4/21/2023	HYDRAULICS ENGINEER JONATHAN G. DALTON LICENSE NO. 26971 4/21/2023

**DOCUMENT NOT CONSIDERED FINAL
UNLESS ALL SIGNATURES COMPLETED**

DESIGN DISCHARGE	= 660	CFS
DESIGN FREQUENCY	= 50	YRS
DESIGN HW ELEVATION	= 762.0	FT
BASE DISCHARGE	= 680	CFS
BASE FREQUENCY	= 100	YRS
BASE HW ELEVATION	= 762J	FT
OVERTOPPING DISCHARGE	= >720	CFS
OVERTOPPING FREQUENCY	= >500	YRS
OVERTOPPING ELEVATION	= 794J	FT



4/15/2023
 c:\users\matferguson\documents\pwworking\dms42562\2707D_RDY_PEL_PSHI.dgn
 matferguson