

5/28/23

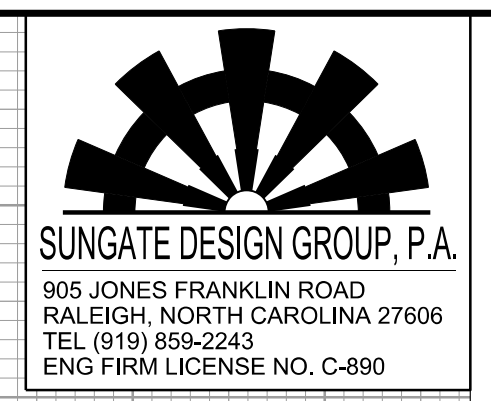
PIPE HYDRAULIC DATA
42" RCP Sta. 684+10-L-

DRAINAGE AREA	= 24.7	AC
DESIGN FREQUENCY	= 50	YRS
DESIGN DISCHARGE	= 70	CFS
DESIGN HW ELEVATION	= 856.0	FT
100 YEAR DISCHARGE	= 75	CFS
100 YEAR HW ELEVATION	= 856.26	FT
OVERTOPPING FREQUENCY	= 500+	YRS
OVERTOPPING DISCHARGE	= 85+	CFS
OVERTOPPING ELEVATION	= 887.1	FT

PI = 688+00.00
EL = 896.31'
VC = 1600'
K = 535
DS = >70 MPH

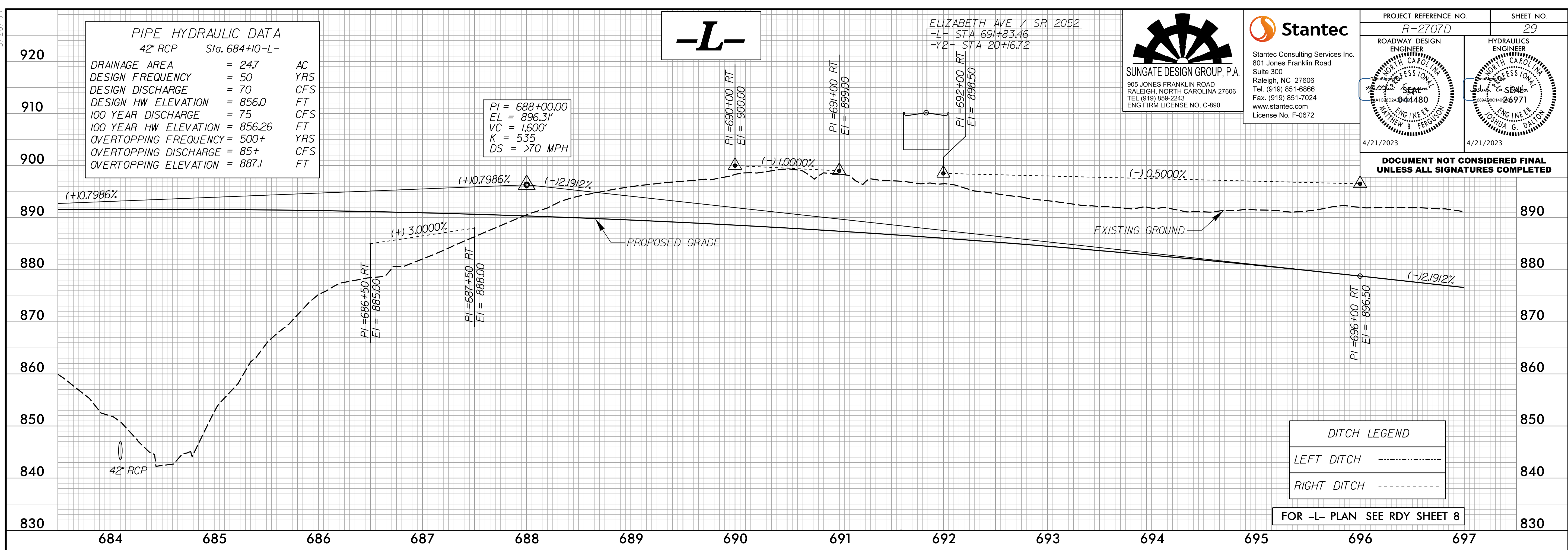
-L-

ELIZABETH AVE / SR 2052
-L- STA 691+83.46
-Y2- STA 20+16.72



PROJECT REFERENCE NO.	R-2707D	SHEET NO.	29
ROADWAY DESIGN ENGINEER	SEAN G. SPANGLER	HYDRAULICS ENGINEER	SEAN G. SPANGLER
DATE	4/21/2023	DATE	4/21/2023

DOCUMENT NOT CONSIDERED FINAL UNLESS ALL SIGNATURES COMPLETED

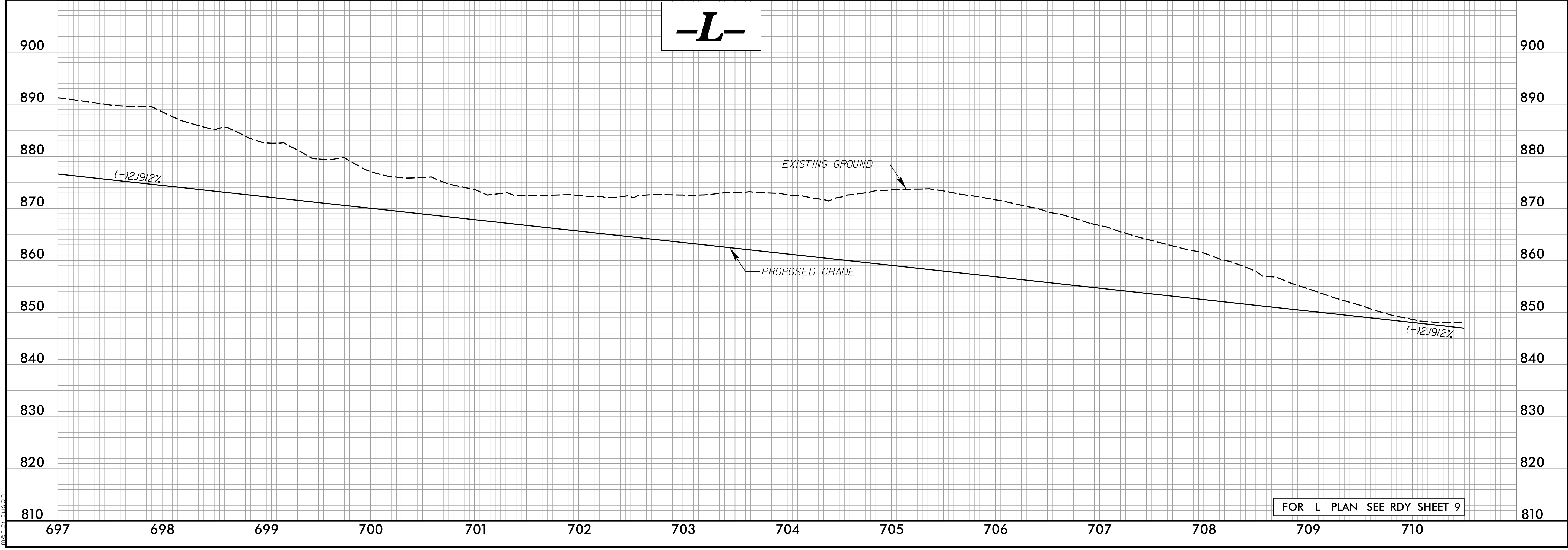


DITCH LEGEND

LEFT DITCH	-----
RIGHT DITCH	-----

FOR -L- PLAN SEE RDY SHEET 8

-L-



FOR -L- PLAN SEE RDY SHEET 9

4/15/2023 c:\users\matferguson\documents\pwworking\dms42562\2707D_RDY_PEL_PSHI.dgn matferguson