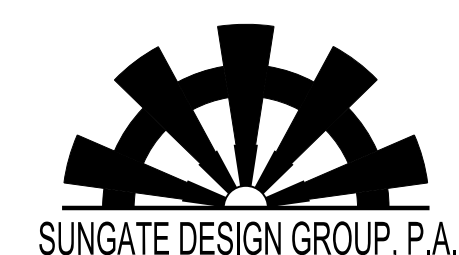


8/17/99



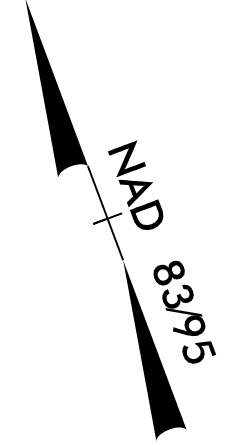
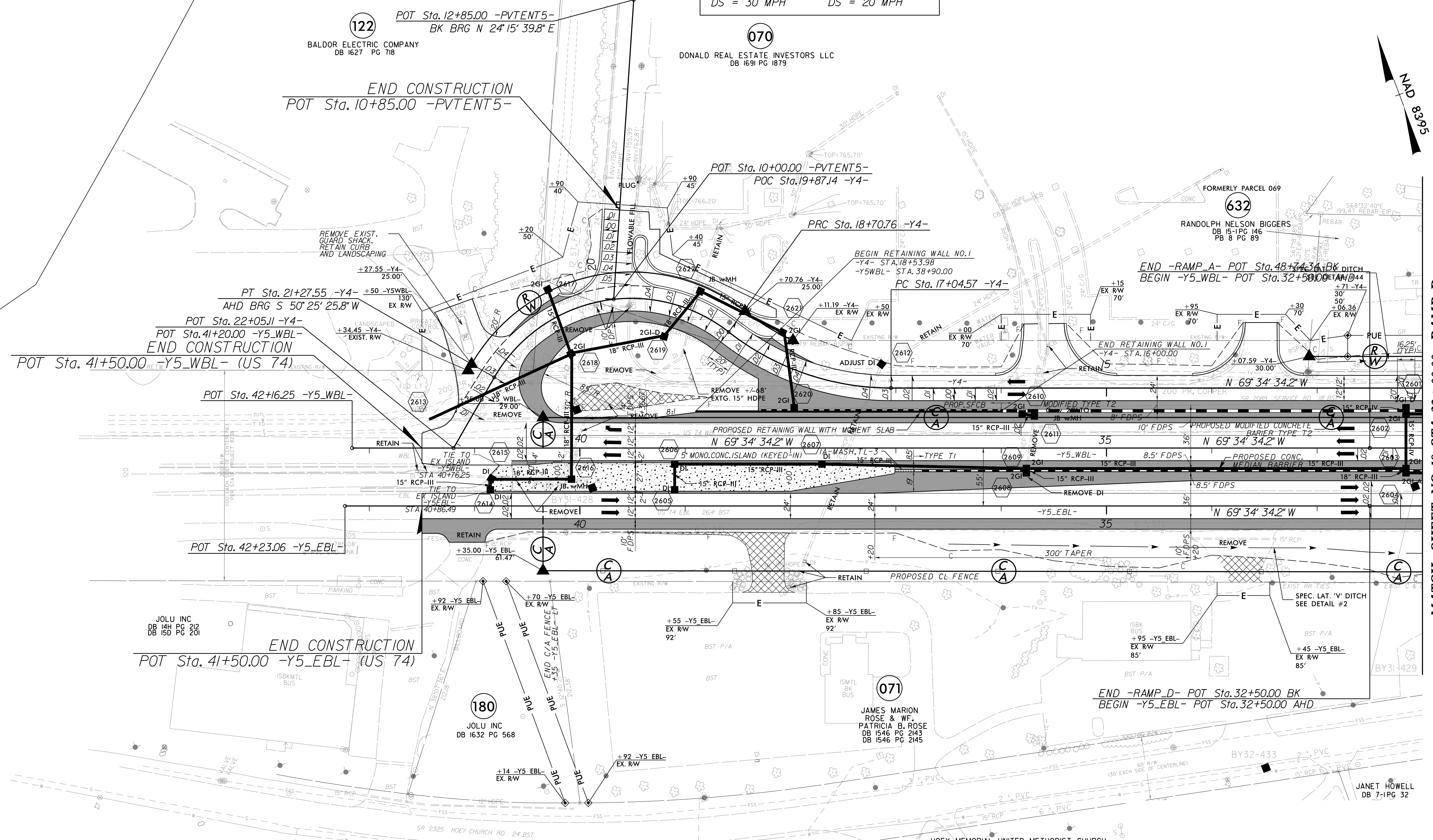
SUNGATE DESIGN GROUP, P.A.  
905 JONES FRANKLIN ROAD  
RALEIGH, NORTH CAROLINA 27606  
TEL (919) 859-2243  
ENG FIRM LICENSE NO. C-890



Stantec Consulting Services Inc.  
801 Jones Franklin Road  
Suite 300  
Raleigh, NC 27606  
Tel. (919) 851-6866  
Fax. (919) 851-7024  
www.stantec.com  
License No. F-0672

PROJECT REFERENCE NO. R-2707D		SHEET NO. 26	
RW SHEET NO.		HYDRAULICS ENGINEER	
ROADWAY DESIGN ENGINEER		HYDRAULICS ENGINEER	
DOCUMENT NOT CONSIDERED FINAL UNLESS ALL SIGNATURES COMPLETED			

-Y4-	
PI Sta 17+90.86 Δ = 38° 05' 14.9" (RT) D = 22° 55' 05.9" L = 166.19' T = 86.30' R = 250.00' SE = .04 RO = 80' DS = 30 MPH	PI Sta 20+43.58 Δ = 98° 05' 14.9" (LT) D = 38° 11' 49.9" L = 256.79' T = 172.82' R = 150.00' SE = .04 RO = 80' DS = 20 MPH



MATCH SHEET NO. 18 STA. 32 + 00.00 -RAMP D-  
MATCH SHEET NO. 18 STA. 48 + 24.34 -RAMP A-  
MATCH SHEET NO. 18 STA. 12 + 00.00 -Y4-

REFERENCES:  
FOR -Y4- PROFILE, SEE SHEET NO. 47  
FOR -Y5- PROFILES (EBL & WBL), SEE SHEET NO. 48  
FOR -RAMP A- PROFILE, SEE SHEET NO. 40  
FOR -PVTENT5- PROFILE, SEE SHEET NO. 54

4/25/2023  
c:\p\moferguson\documents\pov...working\dms42562\R2707D\_RDY\_PSH\_26.dgn  
moferguson