

Stantec Consulting Services Inc. 801 Jones Franklin Road Suite 300 Raleigh, NC 27606 Tel. (919) 851-6866 Fax. (919) 851-7024 www.stantec.com License No. F-0672

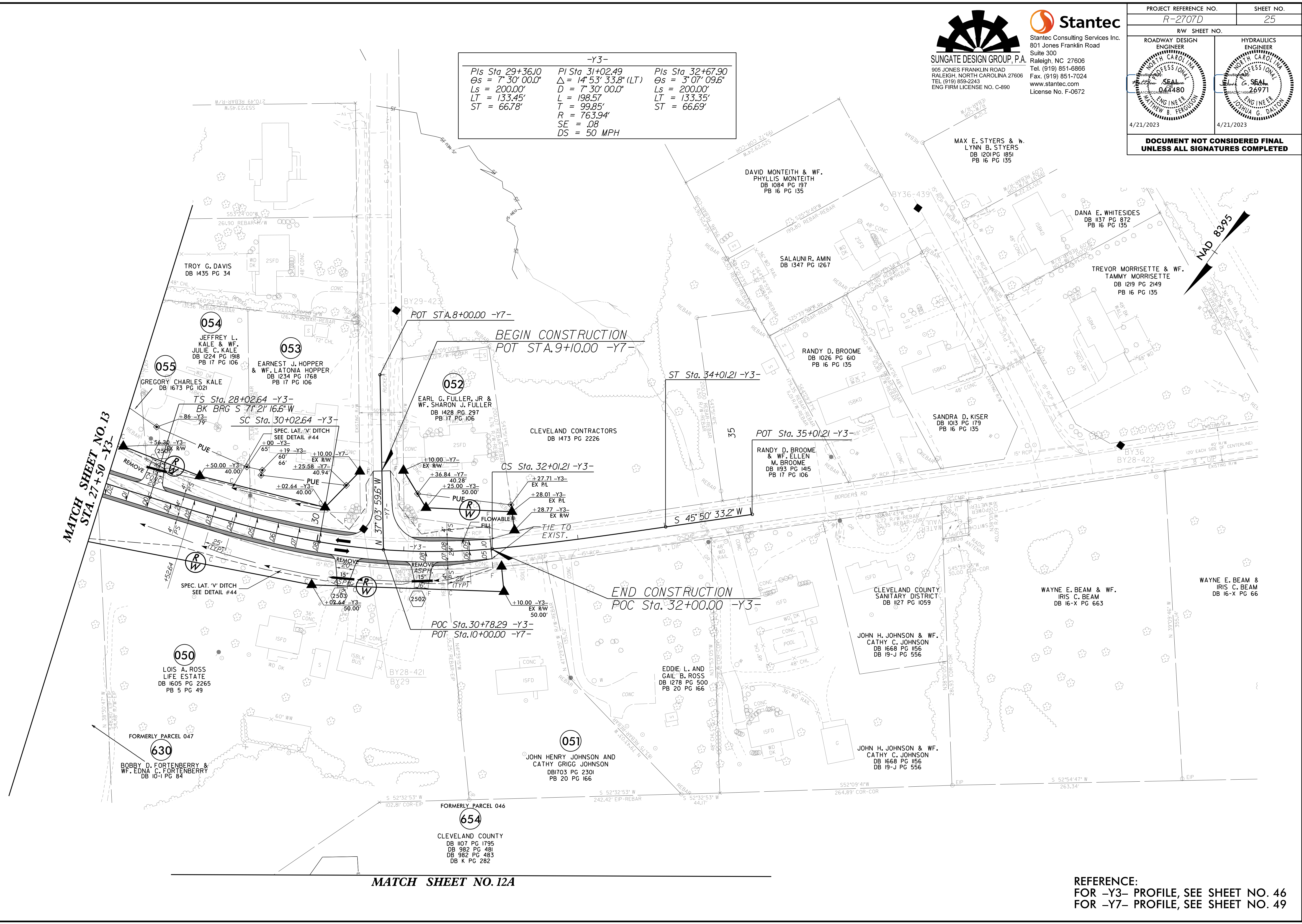
PROJECT REFERENCE NO. <i>R-2707D</i>	SHEET NO. 25
RW SHEET NO.	
ROADWAY DESIGN ENGINEER <i>Matthew G. Seaman</i> 044480 4/21/2023	HYDRAULICS ENGINEER <i>Matthew G. Seaman</i> 26971 4/21/2023
DOCUMENT NOT CONSIDERED FINAL UNLESS ALL SIGNATURES COMPLETED	

-Y3-		
<i>Pls Sta. 29+36.10</i>	<i>Pl Sta. 31+02.49</i>	<i>Pls Sta. 32+67.90</i>
$\Theta s = 7^{\circ} 30' 00.0''$	$\Delta = 14^{\circ} 53' 33.8''$ (LT)	$\Theta s = 3^{\circ} 07' 09.6''$
$Ls = 200.00'$	$D = 7^{\circ} 30' 00.0''$	$Ls = 200.00'$
$LT = 133.45'$	$L = 198.57'$	$LT = 133.35'$
$ST = 66.78'$	$T = 99.85'$	$ST = 66.69'$
	$R = 763.94'$	
	$SE = .08$	
	$DS = 50$ MPH	

MATCH SHEET NO. 13
STA. 27+50 -Y3-

MATCH SHEET NO. 12A

4/16/2023 10:40:53 AM C:\Users\j...r-vis\documents\p...working\dms42562\R2707D_RDY_PSH_25.dgn



REFERENCE:
FOR -Y3- PROFILE, SEE SHEET NO. 46
FOR -Y7- PROFILE, SEE SHEET NO. 49