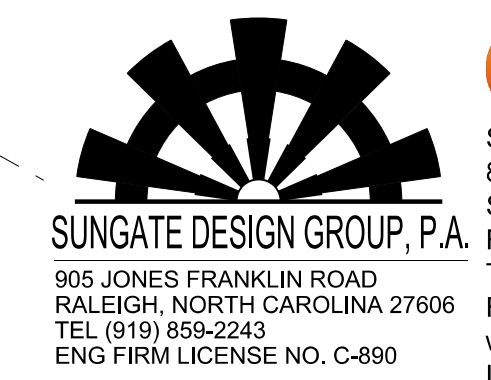


8.17.19



Stantec Consulting Services Inc. 801 Jones Franklin Road Suite 300 Raleigh, NC 27606 Tel. (919) 851-6866 Fax. (919) 851-7024 www.stantec.com License No. F-0672

PROJECT REFERENCE NO. R-2707D	SHEET NO. 24
ROADWAY DESIGN ENGINEER Matthew B. Ferguson 044480	HYDRAULICS ENGINEER Joshua G. Dalton 26971
4/21/2023	4/21/2023
DOCUMENT NOT CONSIDERED FINAL UNLESS ALL SIGNATURES COMPLETED	

-Y3-

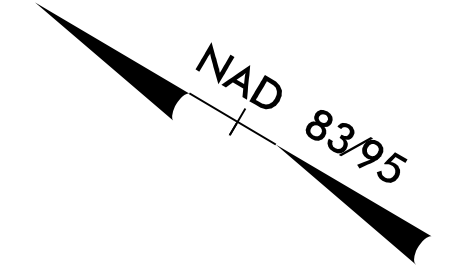
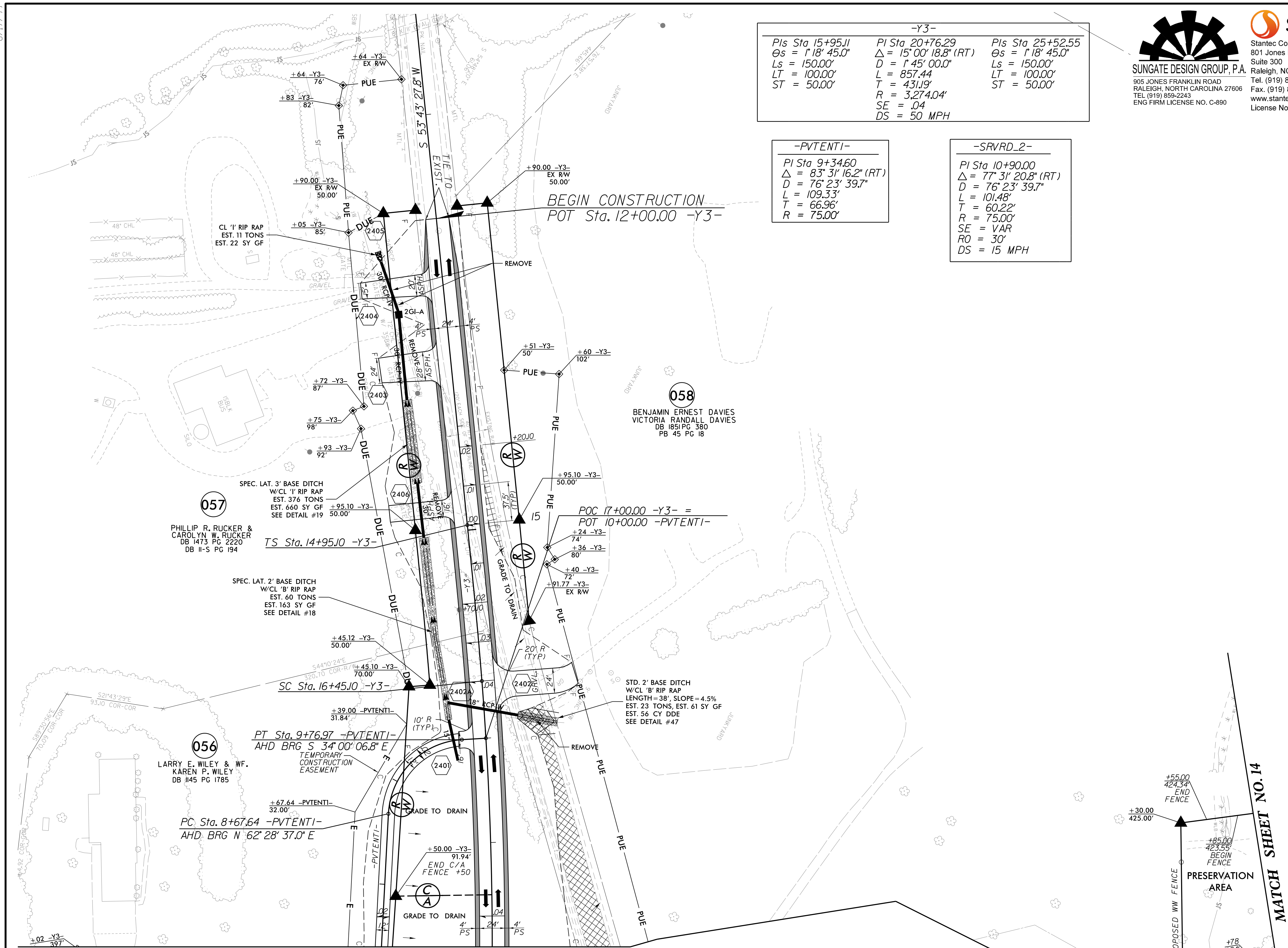
PIs Sta 15+95.11 θs = 1' 18" 45.0" Ls = 150.00' LT = 100.00' ST = 50.00'	PI Sta 20+76.29 Δ = 15' 00" 18.8" (RT) D = 1' 45" 00.0" L = 857.44 T = 431.19' R = 3,274.04' SE = .04 DS = 50 MPH	PIs Sta 25+52.55 θs = 1' 18" 45.0" Ls = 150.00' LT = 100.00' ST = 50.00'
--	--	--

-PVTENTI-

PI Sta 9+34.60 Δ = 83' 31" 16.2" (RT) D = 76' 23" 39.7" L = 109.33' T = 66.96' R = 75.00'
--

-SRVRD_2-

PI Sta 10+90.00 Δ = 77' 31" 20.8" (RT) D = 76' 23" 39.7" L = 101.48' T = 60.22' R = 75.00' SE = VAR RO = 30' DS = 15 MPH
--

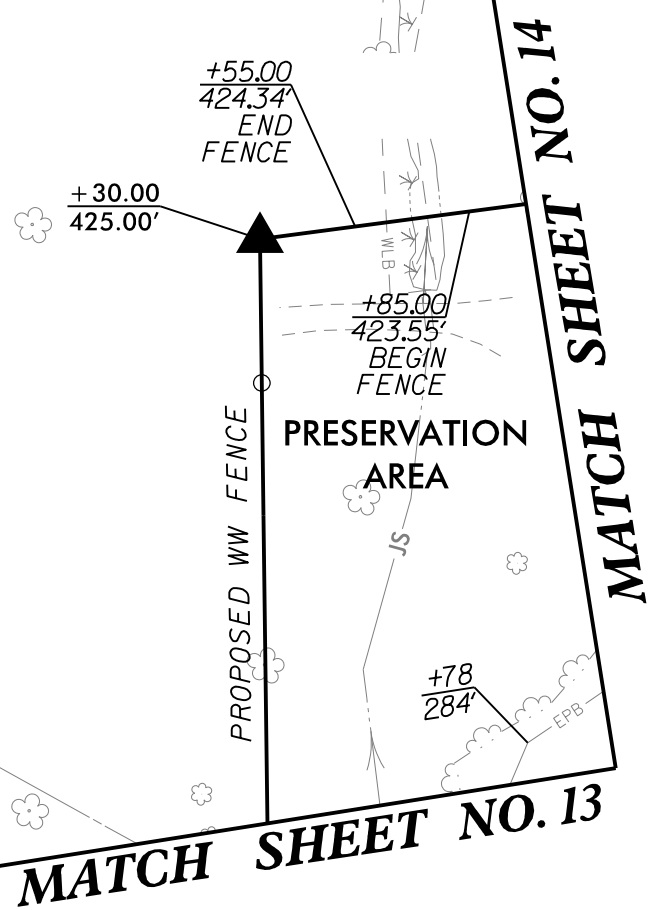


057
PHILLIP R. RUCKER & CAROLYN W. RUCKER
DB 1473 PG 2220
DB II-S PG 194

056
LARRY E. WILEY & WF. KAREN P. WILEY
DB 1145 PG 1785

058
BENJAMIN ERNEST DAVIES
VICTORIA RANDALL DAVIES
DB 1851 PG 380
PB 45 PG 18

MATCH SHEET NO. 13 MATCH SHEET NO. 13
STA. 7 + 39.96 -PVTENTI- STA. 19 + 00 -Y3-



REFERENCE:
FOR -Y3- PROFILE, SEE SHEET NO. 46
FOR -PVTENTI- PROFILE, SEE SHEET NO. 53

4/16/2023 C:\Users\hujar-vis\documents\pwr-working\dms42562\R2707D_RDY_PSH_24.dgn