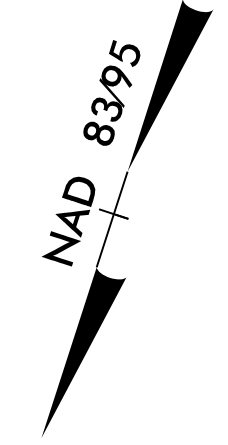
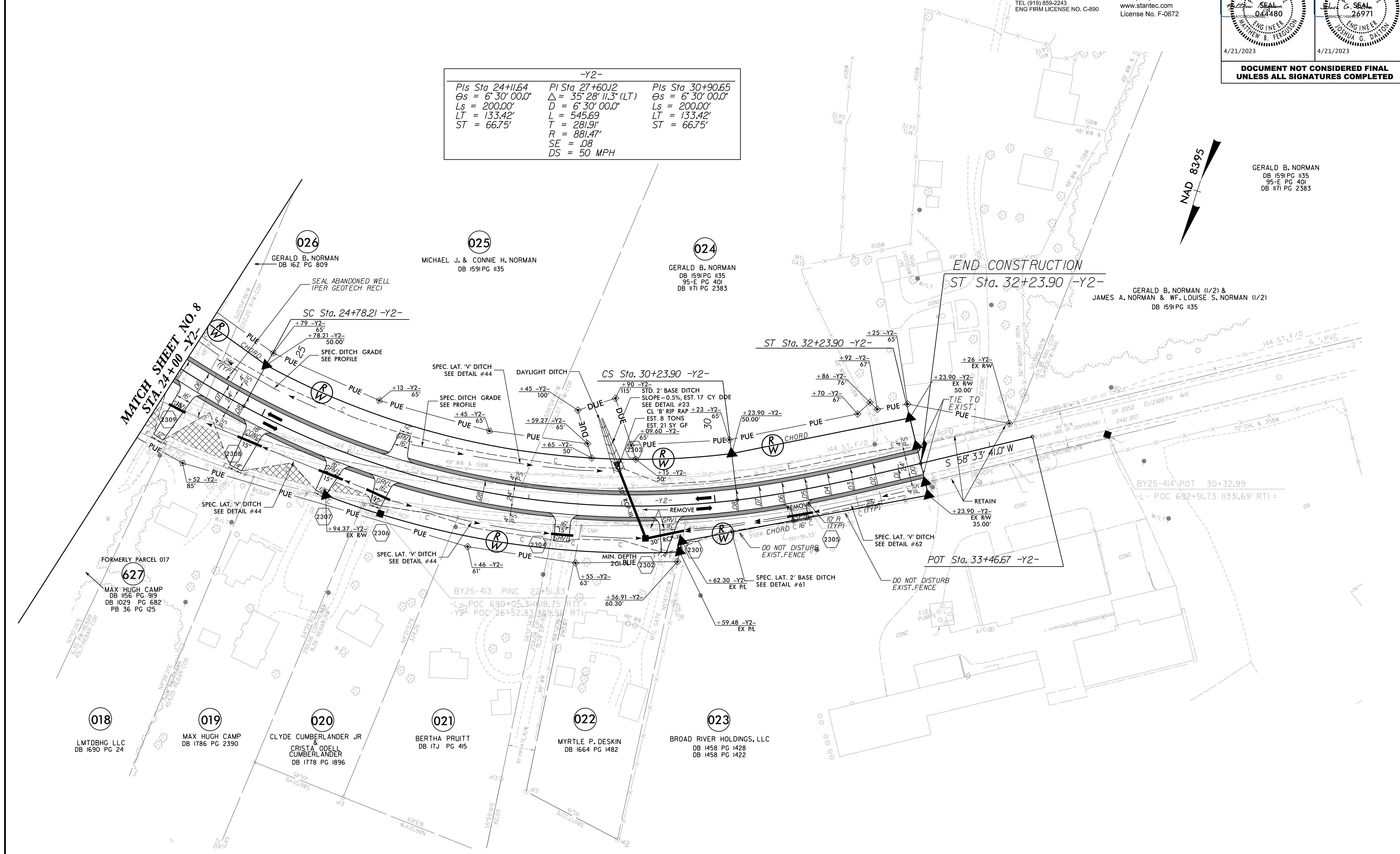


PROJECT REFERENCE NO. <i>R-2707D</i>	SHEET NO. <i>23</i>
ROADWAY DESIGN ENGINEER <i>Matthew B. Ferguson</i> 044480	HYDRAULICS ENGINEER <i>Joshua G. Dalton</i> 26971
4/21/2023	4/21/2023
<b>DOCUMENT NOT CONSIDERED FINAL UNLESS ALL SIGNATURES COMPLETED</b>	

-Y2-		
<i>Pls Sta 24+11.64</i>	<i>PI Sta 27+60.12</i>	<i>Pls Sta 30+90.65</i>
$\Theta s = 6^{\circ} 30' 00.0"$	$\Delta = 35^{\circ} 28' 11.3" (LT)$	$\Theta s = 6^{\circ} 30' 00.0"$
$Ls = 200.00'$	$D = 6^{\circ} 30' 00.0"$	$Ls = 200.00'$
$LT = 133.42'$	$L = 545.69'$	$LT = 133.42'$
$ST = 66.75'$	$T = 281.91'$	$ST = 66.75'$
	$R = 881.47'$	
	$SE = .08$	
	$DS = 50 \text{ MPH}$	



GERALD B. NORMAN  
DB 1591 PG 1135  
95-E PG 401  
DB 1171 PG 2383

GERALD B. NORMAN (1/2) &  
JAMES A. NORMAN & W.F. LOUISE S. NORMAN (1/2)  
DB 1591 PG 1135

627  
FORMERLY PARCEL 017  
MAX HUGH CAMP  
DB 1156 PG 919  
DB 1029 PG 682  
PB 36 PG 125

018  
LMTDBHG LLC  
DB 1690 PG 24

019  
MAX HUGH CAMP  
DB 1786 PG 2390

020  
CLYDE CUMBERLANDER JR  
&  
CRISTA ODELL  
CUMBERLANDER  
DB 1778 PG 1896

021  
BERTHA PRUITT  
DB 17J PG 415

022  
MYRTLE P. DESKIN  
DB 1664 PG 1482

023  
BROAD RIVER HOLDINGS, LLC  
DB 1458 PG 1428  
DB 1458 PG 1422

REFERENCE:  
FOR -Y2- PROFILE, SEE SHEET NO. 45