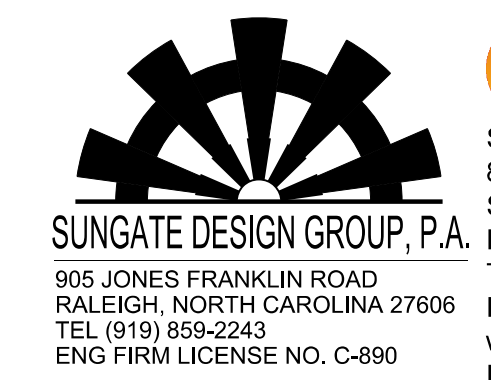


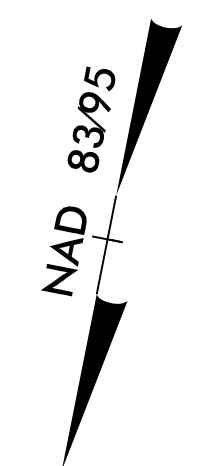
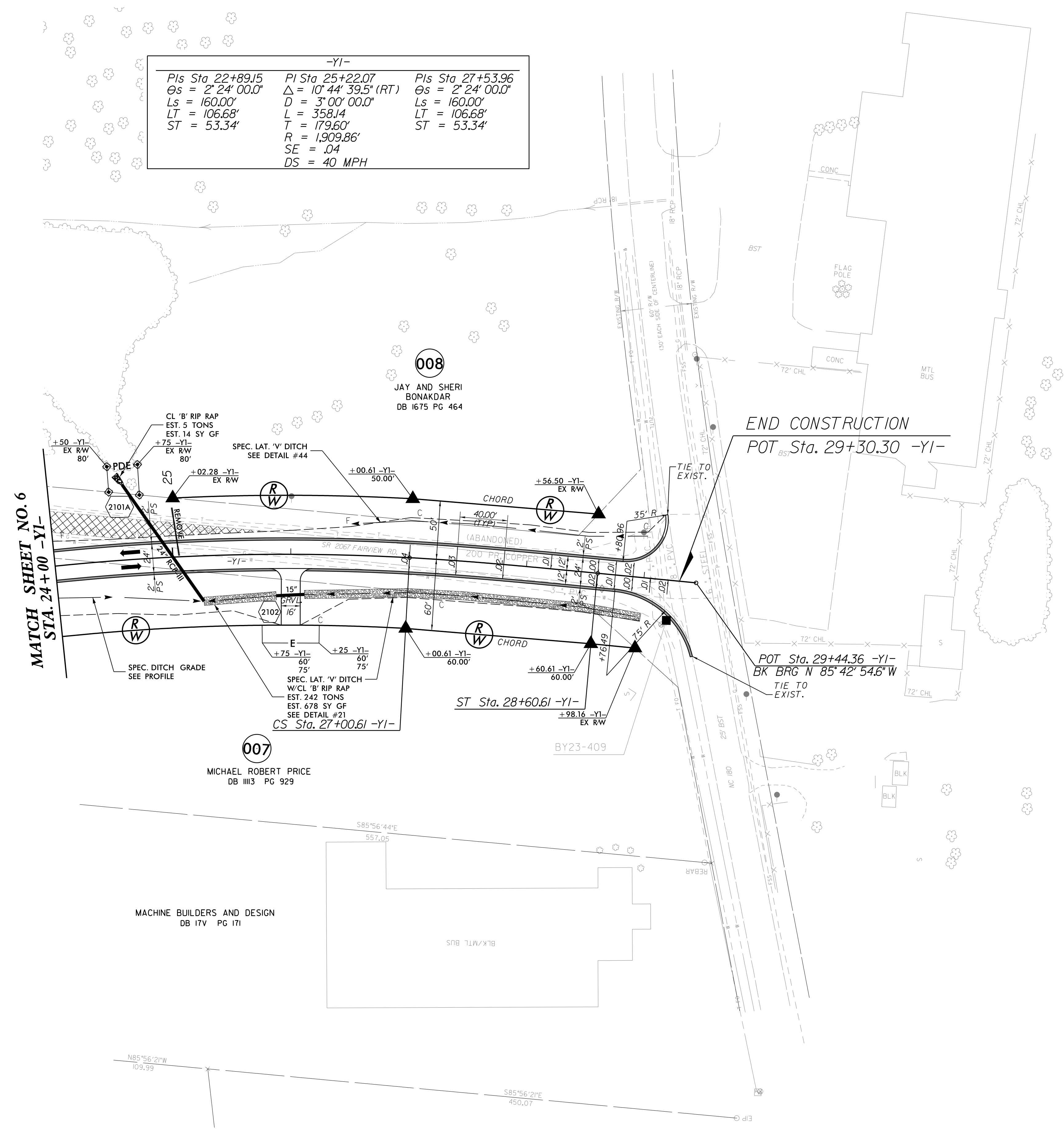
8/17/99



Stantec Consulting Services Inc. 801 Jones Franklin Road Suite 300 Raleigh, NC 27606 Tel. (919) 851-6866 Fax. (919) 851-7024 www.stantec.com License No. F-0672

PROJECT REFERENCE NO. <i>R-2707D</i>	SHEET NO. <i>21</i>
RW SHEET NO.	
ROADWAY DESIGN ENGINEER <i>Matthew B. Ferguson</i> 044480	HYDRAULICS ENGINEER <i>Joshua G. Dalton</i> 26971
4/21/2023	4/21/2023
DOCUMENT NOT CONSIDERED FINAL UNLESS ALL SIGNATURES COMPLETED	

-Y1-		
<i>PIs Sta 22+89.15</i>	<i>PI Sta 25+22.07</i>	<i>PIs Sta 27+53.96</i>
$\Theta s = 2' 24' 00.0"$	$\Delta = 10' 44' 39.5" (RT)$	$\Theta s = 2' 24' 00.0"$
$Ls = 160.00'$	$D = 3' 00' 00.0"$	$Ls = 160.00'$
$LT = 106.68'$	$L = 358.14'$	$LT = 106.68'$
$ST = 53.34'$	$T = 179.60'$	$ST = 53.34'$
	$R = 1,909.86'$	
	$SE = .04$	
	$DS = 40 MPH$	



4/16/2023 10:50:33 AM C:\Users\hujar-vis\documents\pwr-working\dms42562\R2707D\_RDY\_PSH\_21.dgn

REFERENCES:  
FOR -Y1- PROFILE, SEE SHEET NO. 44