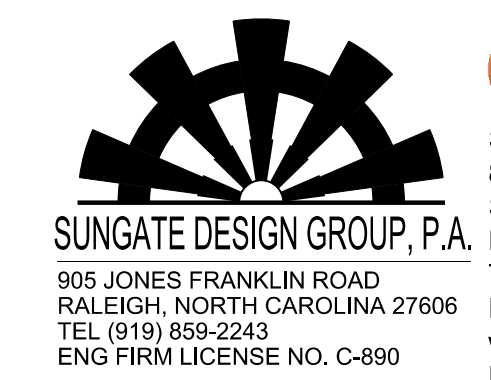


8.17.2023

4/16/2023 10:40:53 AM C:\Users\jtorvis\documents\pwr\working\dms42562\R2707D_RDY_PSH_17A.dgn



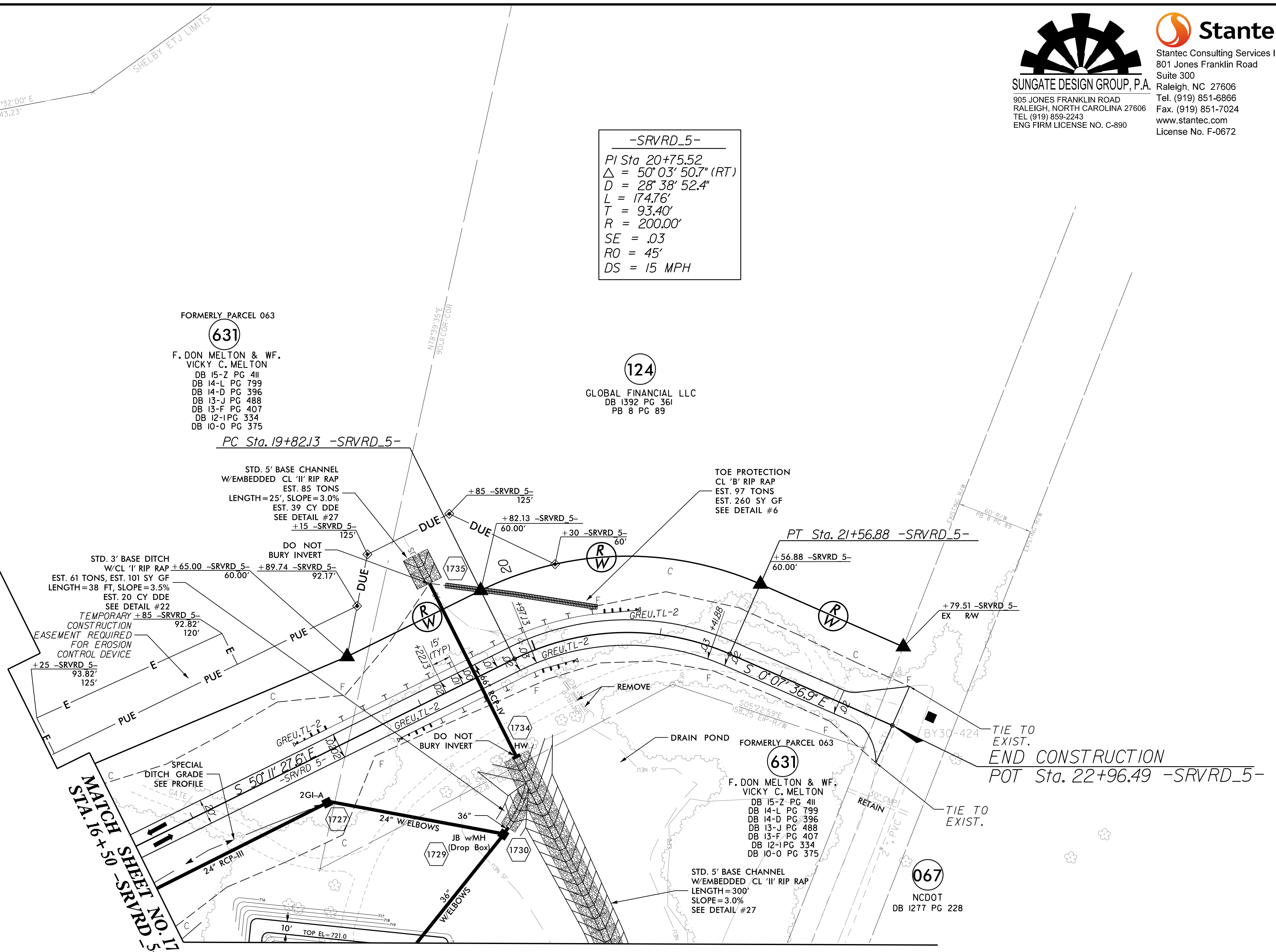
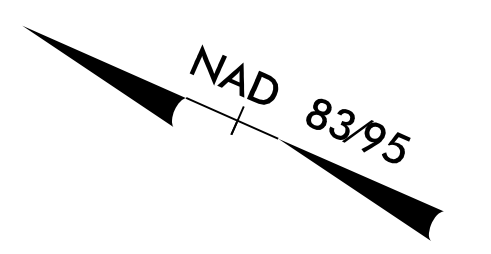
Stantec Consulting Services Inc. 801 Jones Franklin Road Suite 300 Raleigh, NC 27606 Tel. (919) 851-6866 Fax. (919) 851-7024 www.stantec.com License No. F-0672

PROJECT REFERENCE NO. <i>R-2707D</i>	SHEET NO. <i>17A</i>
RW SHEET NO.	
ROADWAY DESIGN ENGINEER <i>Matthew B. Ferguson</i> 044480 4/21/2023	HYDRAULICS ENGINEER <i>Joshua G. Dalton</i> 26971 4/21/2023
DOCUMENT NOT CONSIDERED FINAL UNLESS ALL SIGNATURES COMPLETED	

-SRVRD_5-
 PI Sta. 20+75.52
 $\Delta = 50^{\circ} 03' 50.7" (RT)$
 $D = 28^{\circ} 38' 52.4"$
 $L = 174.76'$
 $T = 93.40'$
 $R = 200.00'$
 $SE = .03$
 $RO = 45'$
 $DS = 15 MPH$

FORMERLY PARCEL 063
(631)
 F. DON MELTON & WF.
 VICKY C. MELTON
 DB 15-Z PG 411
 DB 14-L PG 799
 DB 14-D PG 396
 DB 13-J PG 488
 DB 13-F PG 407
 DB 12-IPG 334
 DB 10-O PG 375

(124)
 GLOBAL FINANCIAL LLC
 DB 1392 PG 361
 PB 8 PG 89



MATCH SHEET NO. 17

REFERENCE:
FOR -SRVRD_5- PROFILE, SEE SHEET NO. 52