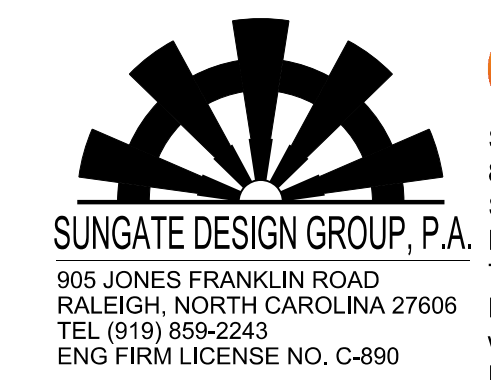
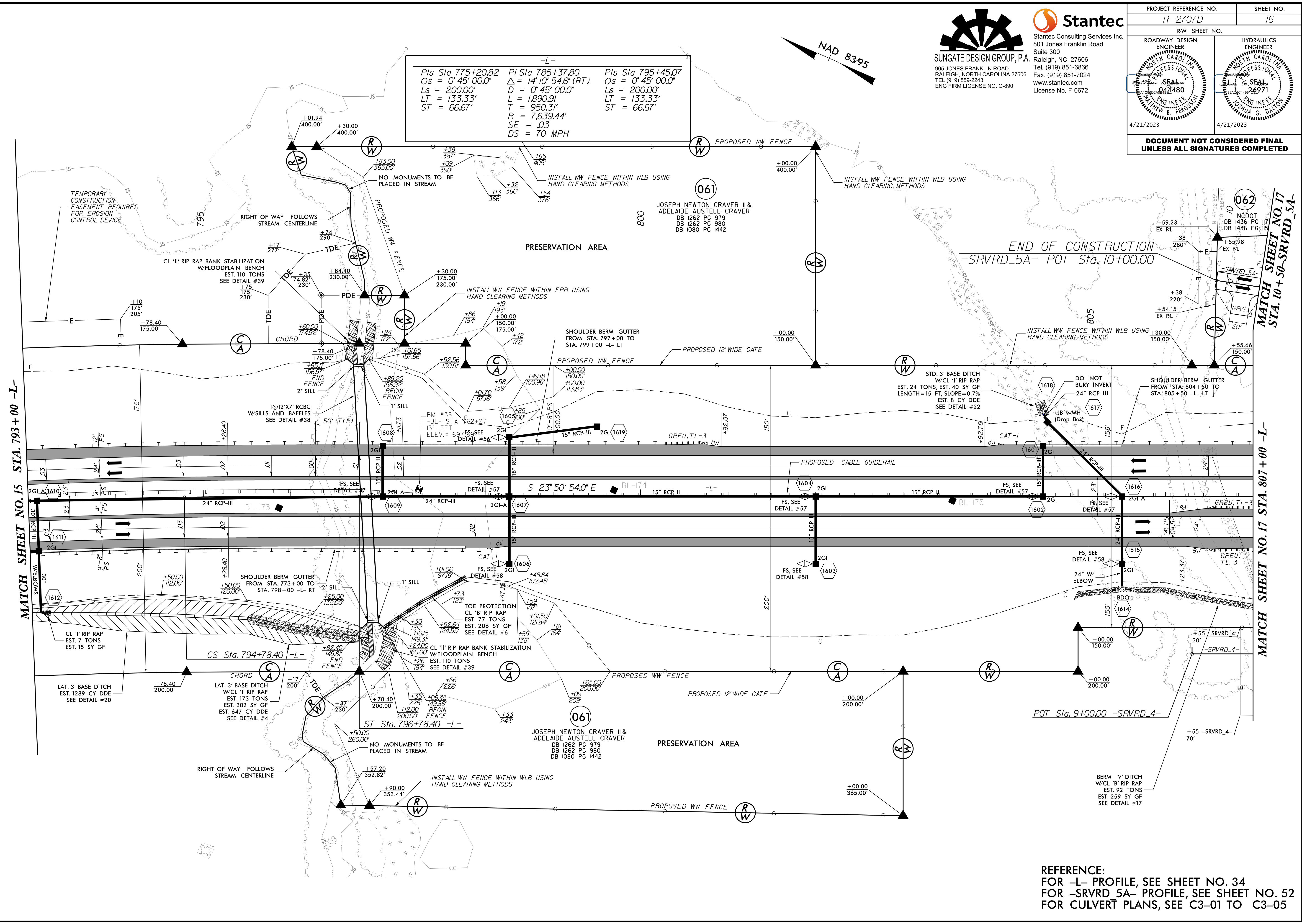


8.17.19



Stantec Consulting Services Inc. 801 Jones Franklin Road Suite 300 Raleigh, NC 27606 Tel. (919) 851-6866 Fax. (919) 851-7024 www.stantec.com License No. F-0672

PROJECT REFERENCE NO. R-2707D	SHEET NO. 16
ROADWAY DESIGN ENGINEER Matthew B. Ferguson Professional Engineer 044480 4/21/2023	HYDRAULICS ENGINEER Joshua G. Dilton Professional Engineer 26971 4/21/2023
DOCUMENT NOT CONSIDERED FINAL UNLESS ALL SIGNATURES COMPLETED	



-L-

Pls Sta 775+20.82 θs = 0° 45' 00.0" Ls = 200.00' LT = 133.33' ST = 66.67'	PI Sta 785+37.80 Δ = 14° 10' 54.6" (RT) D = 0° 45' 00.0" L = 1,890.91' T = 950.31' R = 7,639.44' SE = .03 DS = 70 MPH	Pls Sta 795+45.07 θs = 0° 45' 00.0" Ls = 200.00' LT = 133.33' ST = 66.67'
---	--	---

REFERENCE:
 FOR -L- PROFILE, SEE SHEET NO. 34
 FOR -SRVRD 5A- PROFILE, SEE SHEET NO. 52
 FOR CULVERT PLANS, SEE C3-01 TO C3-05

4/19/2023
 c:\users\mferguson\documents\pwworking\docs\2707D\RDY_PSH_16.dgn
 mferguson