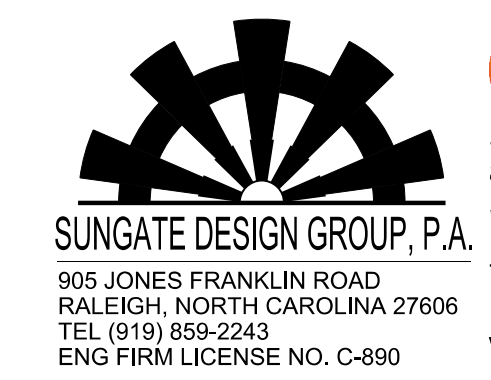


8.17.2023  
4/19/2023  
c:\users\mferguson\documents\working\dm42562\2707D\_RDY\_PSH\_15.dgn  
mferguson



**Stantec**  
Stantec Consulting Services Inc.  
801 Jones Franklin Road  
Suite 300  
Raleigh, NC 27606  
Tel. (919) 851-6866  
Fax. (919) 851-7024  
www.stantec.com  
License No. F-0672

PROJECT REFERENCE NO. <i>R-2707D</i>	SHEET NO. 15
RW SHEET NO.	
ROADWAY DESIGN ENGINEER <i>Matthew B. Ferguson</i> 044480 4/21/2023	HYDRAULICS ENGINEER <i>Joshua G. Newton</i> 26971 4/21/2023
DOCUMENT NOT CONSIDERED FINAL UNLESS ALL SIGNATURES COMPLETED	

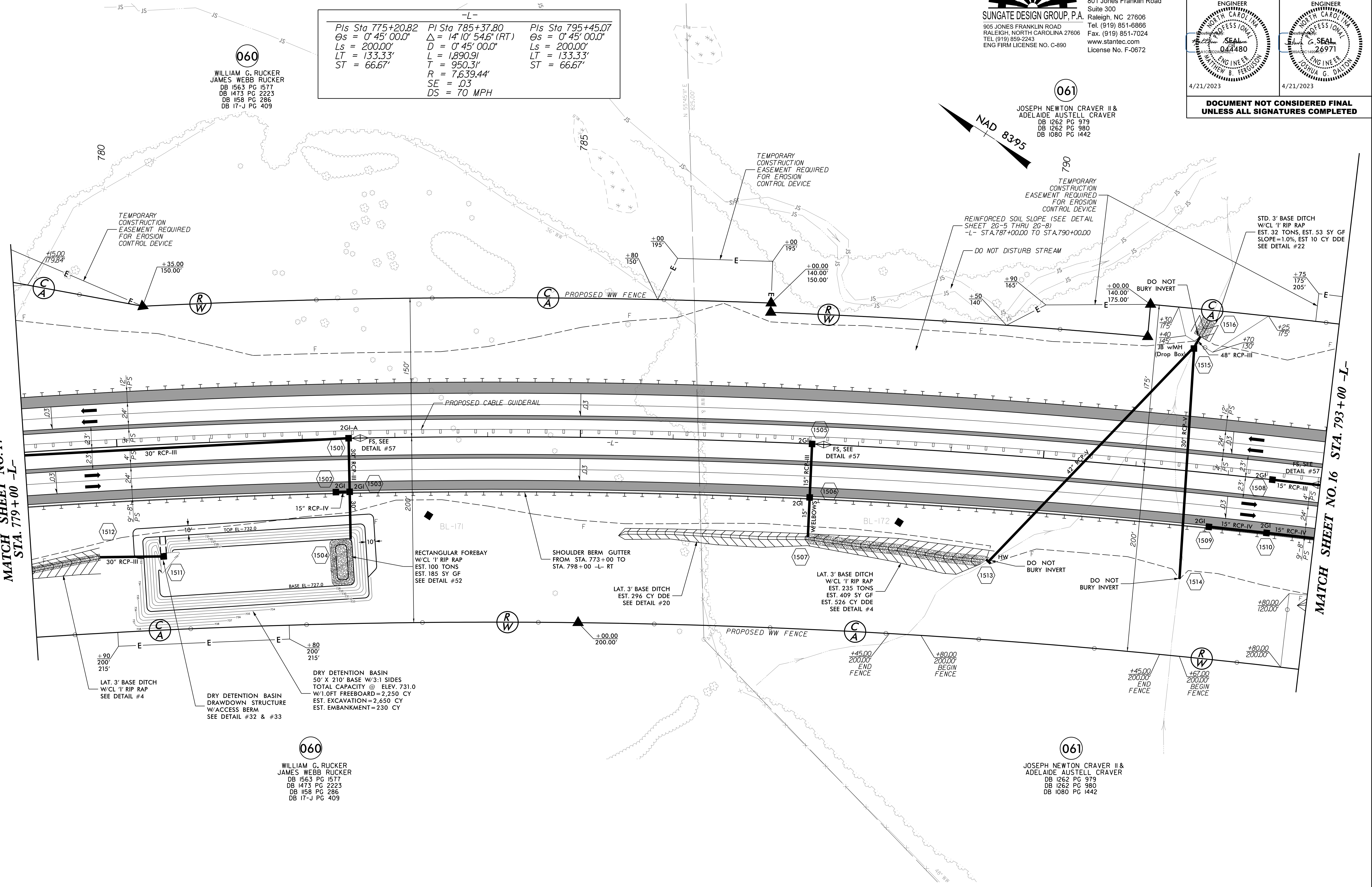
<i>Pls Sta 775+20.82</i> $\Theta s = 0^{\circ} 45' 00.0''$ $Ls = 200.00'$ $LT = 133.33'$ $ST = 66.67'$	<i>PI Sta 785+37.80</i> $\Delta = 14^{\circ} 10' 54.6'' (RT)$ $D = 0^{\circ} 45' 00.0''$ $L = 1,890.9'$ $T = 950.31'$ $R = 7,639.44'$ $SE = .03$ $DS = 70 MPH$	<i>Pls Sta 795+45.07</i> $\Theta s = 0^{\circ} 45' 00.0''$ $Ls = 200.00'$ $LT = 133.33'$ $ST = 66.67'$
--	---	--

**060**  
WILLIAM G. RUCKER  
JAMES WEBB RUCKER  
DB 1563 PG 1577  
DB 1473 PG 2223  
DB 1158 PG 286  
DB 17-J PG 409

**061**  
JOSEPH NEWTON CRAVER II &  
ADELAIDE AUSTELL CRAVER  
DB 1262 PG 979  
DB 1262 PG 980  
DB 1080 PG 1442

MATCH SHEET NO. 14  
STA. 779+00 -L-

MATCH SHEET NO. 16  
STA. 793+00 -L-



**060**  
WILLIAM G. RUCKER  
JAMES WEBB RUCKER  
DB 1563 PG 1577  
DB 1473 PG 2223  
DB 1158 PG 286  
DB 17-J PG 409

**061**  
JOSEPH NEWTON CRAVER II &  
ADELAIDE AUSTELL CRAVER  
DB 1262 PG 979  
DB 1262 PG 980  
DB 1080 PG 1442

REFERENCE:  
FOR -L- PROFILE, SEE SHEET NO. 34