

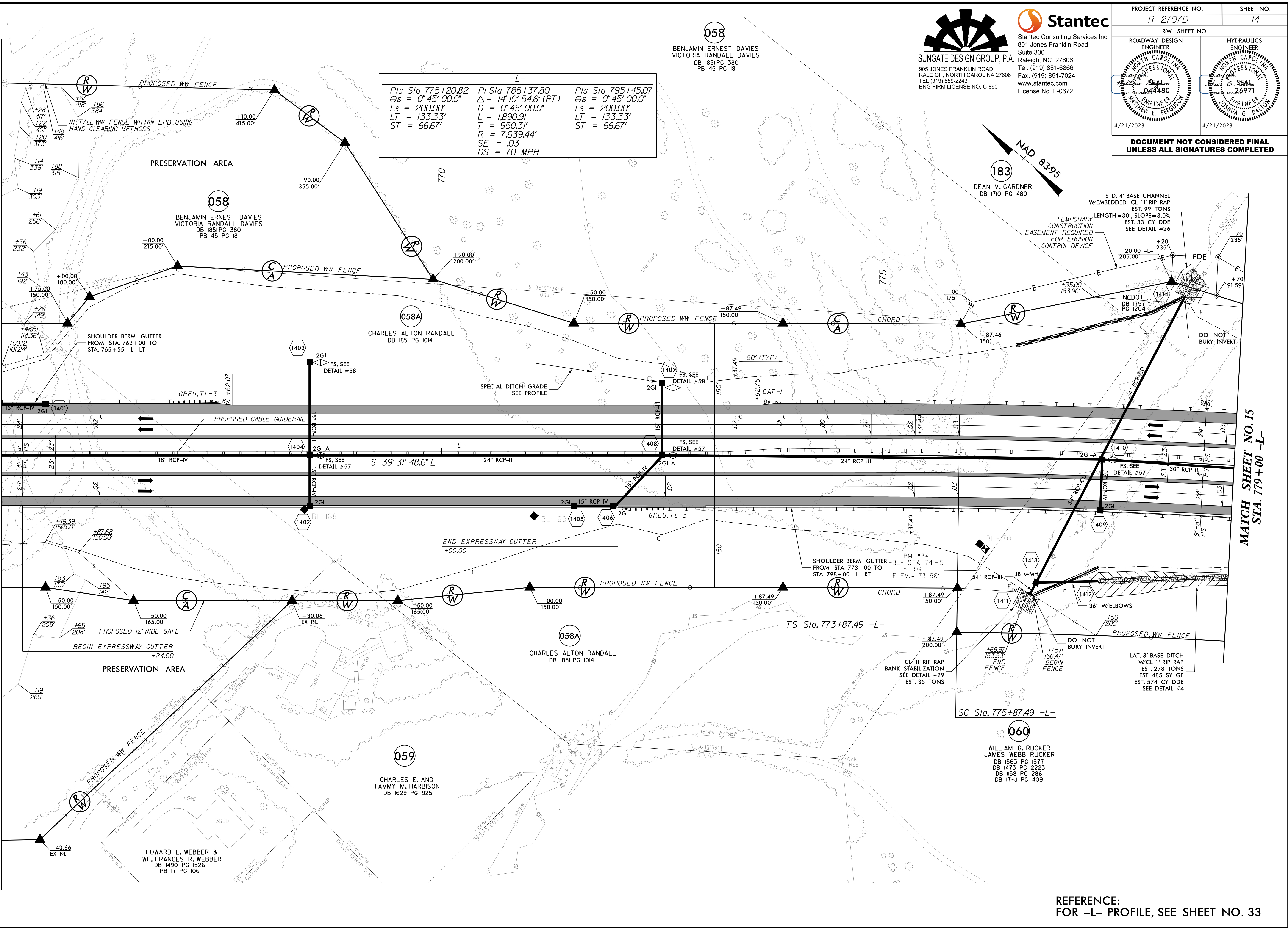
8.17.2023

4:\jorvis\documents\pwr-working\dms42562\R2707D\_RDY\_PSH\_14.dgn

MATCH SHEET NO. 24

MATCH SHEET NO. 13  
STA. 765+00 -L-

MATCH SHEET NO. 15  
STA. 779+00 -L-



| -L-                             |                                     |                                 |
|---------------------------------|-------------------------------------|---------------------------------|
| Pls Sta 775+20.82               | Pl Sta 785+37.80                    | Pls Sta 795+45.07               |
| $\Theta s = 0^\circ 45' 00.0''$ | $\Delta = 14^\circ 10' 54.6'' (RT)$ | $\Theta s = 0^\circ 45' 00.0''$ |
| $Ls = 200.00'$                  | $D = 0^\circ 45' 00.0''$            | $Ls = 200.00'$                  |
| $LT = 133.33'$                  | $L = 1,890.91'$                     | $LT = 133.33'$                  |
| $ST = 66.67'$                   | $T = 950.31'$                       | $ST = 66.67'$                   |
|                                 | $R = 7,639.44'$                     |                                 |
|                                 | $SE = .03$                          |                                 |
|                                 | $DS = 70 \text{ MPH}$               |                                 |

**058**  
 BENJAMIN ERNEST DAVIES  
 VICTORIA RANDALL DAVIES  
 DB 1851 PG 380  
 PB 45 PG 18

**SUNGATE DESIGN GROUP, P.A.**  
 905 JONES FRANKLIN ROAD  
 RALEIGH, NORTH CAROLINA 27606  
 TEL (919) 859-2243  
 ENG FIRM LICENSE NO. C-890

**Stantec**  
 Stantec Consulting Services Inc.  
 801 Jones Franklin Road  
 Suite 300  
 Raleigh, NC 27606  
 Tel. (919) 851-6866  
 Fax. (919) 851-7024  
 www.stantec.com  
 License No. F-0672

| PROJECT REFERENCE NO.  |  | SHEET NO.           |  |
|--|--|---------------------|--|
| R-2707D  |  | 14                  |  |
| RW SHEET NO.   |  | HYDRAULICS ENGINEER |  |
|  |  |                     |  |
| 4/21/2023  |  | 4/21/2023           |  |
| <b>DOCUMENT NOT CONSIDERED FINAL<br/>UNLESS ALL SIGNATURES COMPLETED</b> |  |                     |  |

**183**  
 DEAN V. GARDNER  
 DB 1710 PG 480

**060**  
 WILLIAM G. RUCKER  
 JAMES WEBB RUCKER  
 DB 1563 PG 1577  
 DB 1473 PG 2223  
 DB 1158 PG 286  
 DB 17-J PG 409

**059**  
 CHARLES E. AND  
 TAMMY M. HARBISON  
 DB 1629 PG 925

REFERENCE:  
 FOR -L- PROFILE, SEE SHEET NO. 33