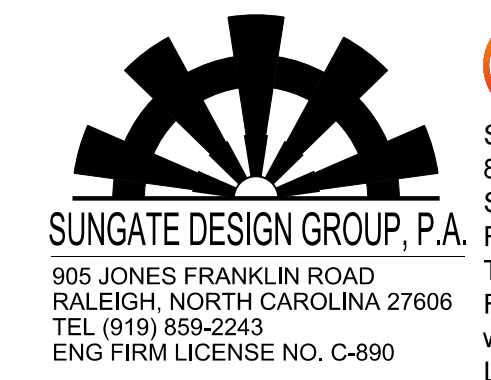


8/17/2023

-PVTENT1-		
PI Sta 6+40.93	$\Delta = 71' 06" 22.1" (LT)$	
$D = 76' 23' 39.7"$		
$L = 93.08'$		
$T = 53.60'$		
$R = 75.00'$		

-Y3-		
PIs Sta 15+95.11	PI Sta 20+76.29	PIs Sta 25+52.55
$\Delta s = 1' 18" 45.0"$	$\Delta = 15' 00" 18.8" (RT)$	$\Delta s = 1' 18" 45.0"$
$L_s = 150.00'$	$D = 1' 45" 00.0"$	$L_s = 150.00'$
$LT = 100.00'$	$L = 857.44'$	$LT = 100.00'$
$ST = 50.00'$	$T = 431.19'$	$ST = 50.00'$
	$R = 3,274.04'$	
	$SE = .04$	
	$DS = 50 \text{ MPH}$	

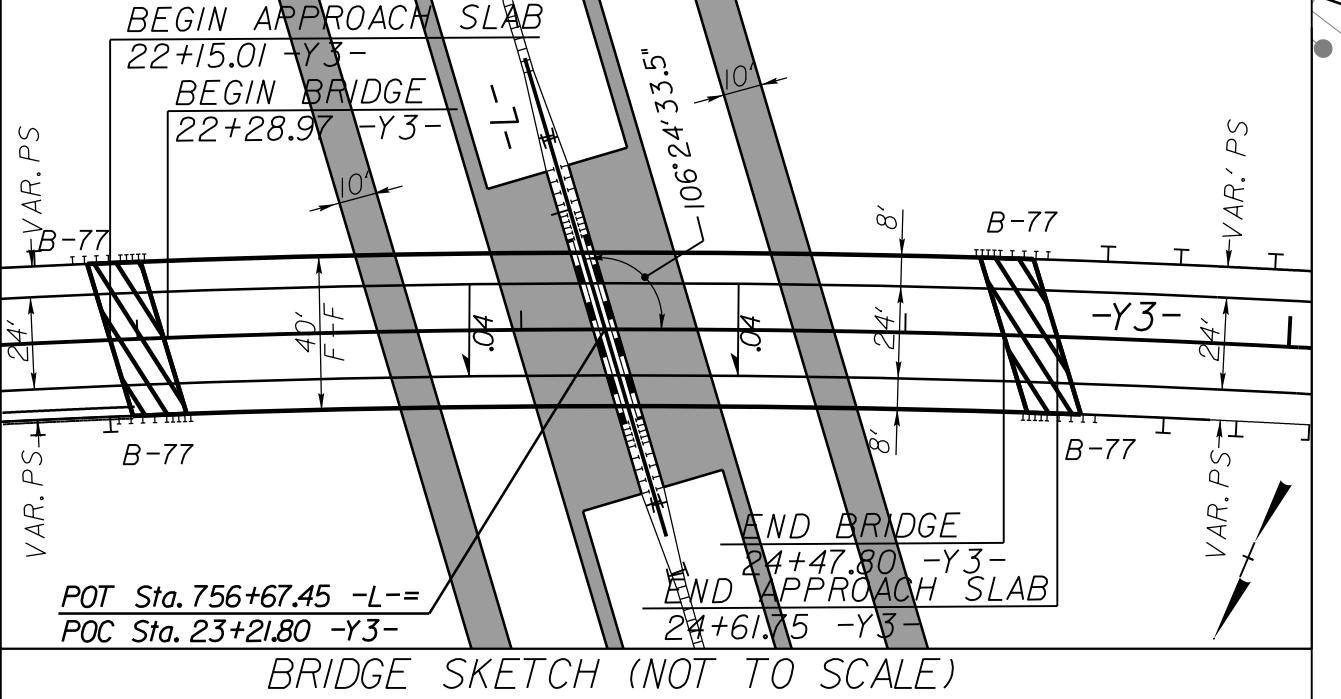
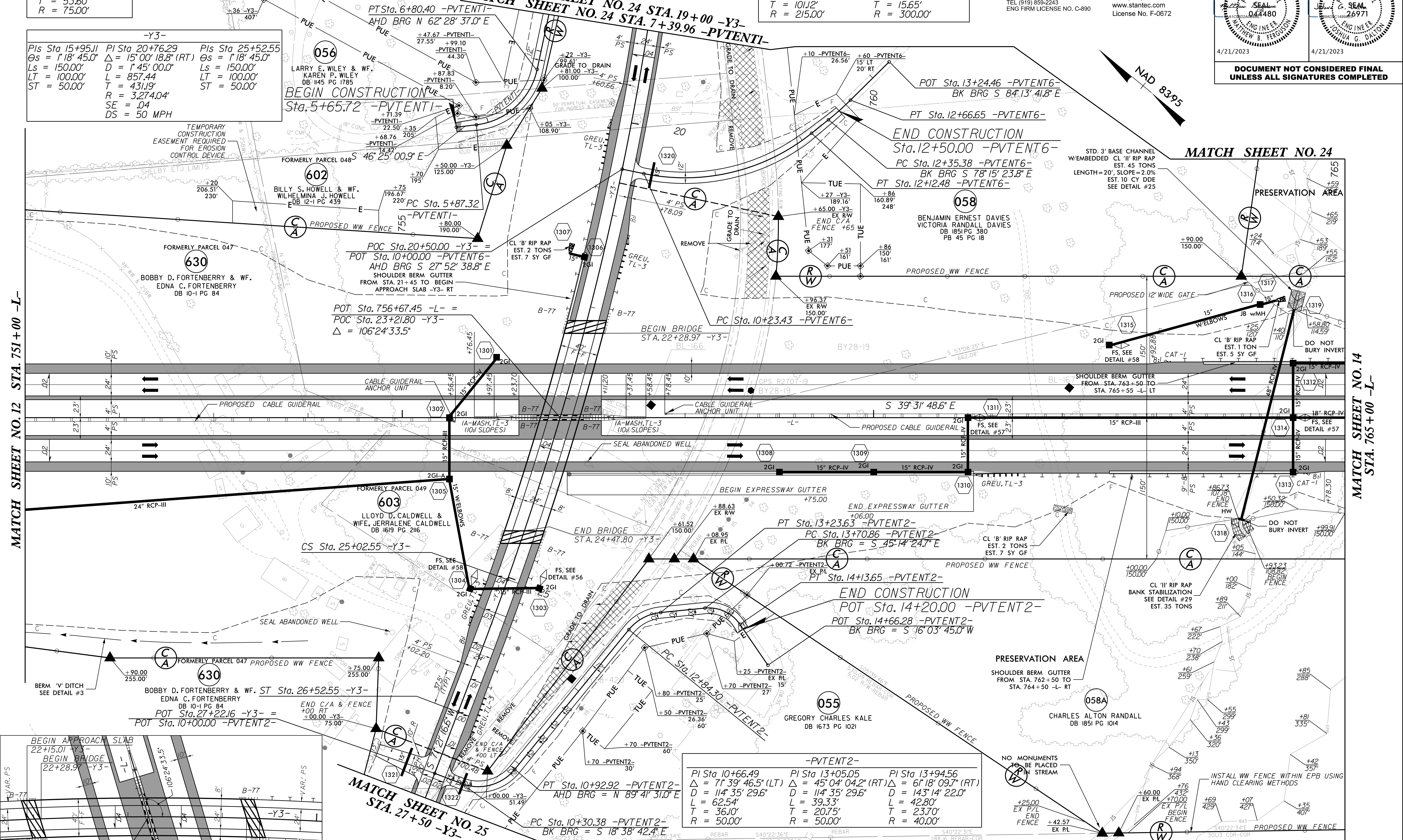
-PVTENT6-			
PI Sta 11+24.56		PI Sta 12+51.03	
$\Delta = 50' 22" 45.0" (LT)$		$\Delta = 5' 58" 18.1" (RT)$	
$D = 26' 38' 57.1"$		$D = 19' 05" 54.9"$	
$L = 189.05'$		$L = 31.27'$	
$T = 101.12'$		$T = 15.65'$	
$R = 215.00'$		$R = 300.00'$	



**Stantec**  
Stantec Consulting Services Inc.  
801 Jones Franklin Road  
Suite 300  
Raleigh, NC 27606  
Tel. (919) 851-8866  
Fax. (919) 851-7024  
www.stantec.com  
License No. F-0672

PROJECT REFERENCE NO. R-2707D	SHEET NO. 13
RW SHEET NO.	
ROADWAY DESIGN ENGINEER SUNGATE DESIGN GROUP, P.A. MATTHEW B. FERGUSON 044480	HYDRAULICS ENGINEER SUNGATE DESIGN GROUP, P.A. JOHN G. DALTON 26971
4/21/2023	4/21/2023

DOCUMENT NOT CONSIDERED FINAL  
UNLESS ALL SIGNATURES COMPLETED



-PVTENT2-		
PI Sta 10+66.49	PI Sta 13+05.05	PI Sta 13+94.56
$\Delta = 71' 39" 46.5" (LT)$	$\Delta = 45' 04" 04.2" (RT)$	$\Delta = 61' 18" 09.7" (RT)$
$D = 114' 35" 29.6"$	$D = 114' 35" 29.6"$	$D = 143' 14" 22.0"$
$L = 62.54'$	$L = 39.33'$	$L = 42.80'$
$T = 36.10'$	$T = 20.75'$	$T = 23.70'$
$R = 50.00'$	$R = 50.00'$	$R = 40.00'$

REFERENCE:  
FOR -L- PROFILE, SEE SHEET NO. 32  
FOR -Y3- PROFILE, SEE SHEET NO. 46  
FOR -PVTENT1-, -PVTENT2- & -PVTENT6- PROFILES, SEE SHEET NO. 54  
FOR BRIDGE PLANS, SEE S3-01 TO S3-36

4/16/2023 10:00:00 AM C:\Users\vis\documents\p\working\dms42562\R2707D\RDY\_PSH\_13.dgn