

8.17.17.99



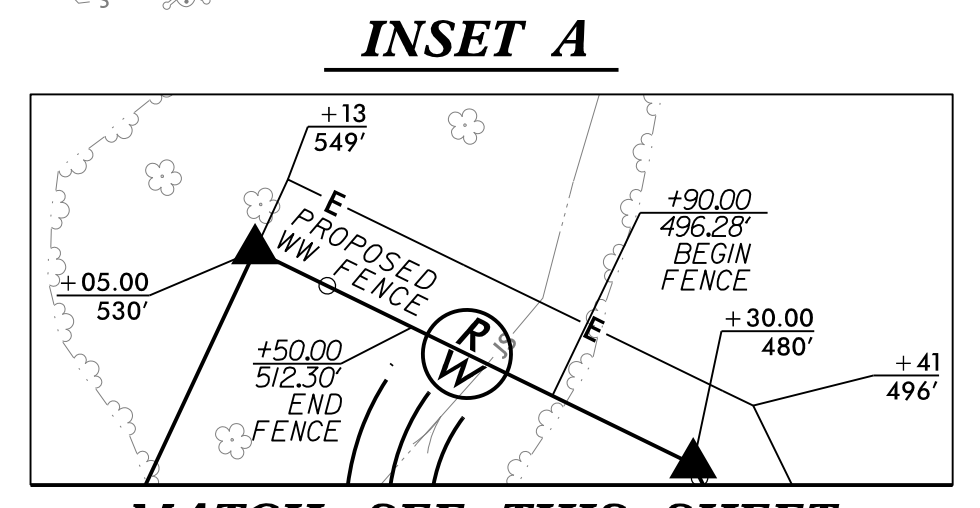
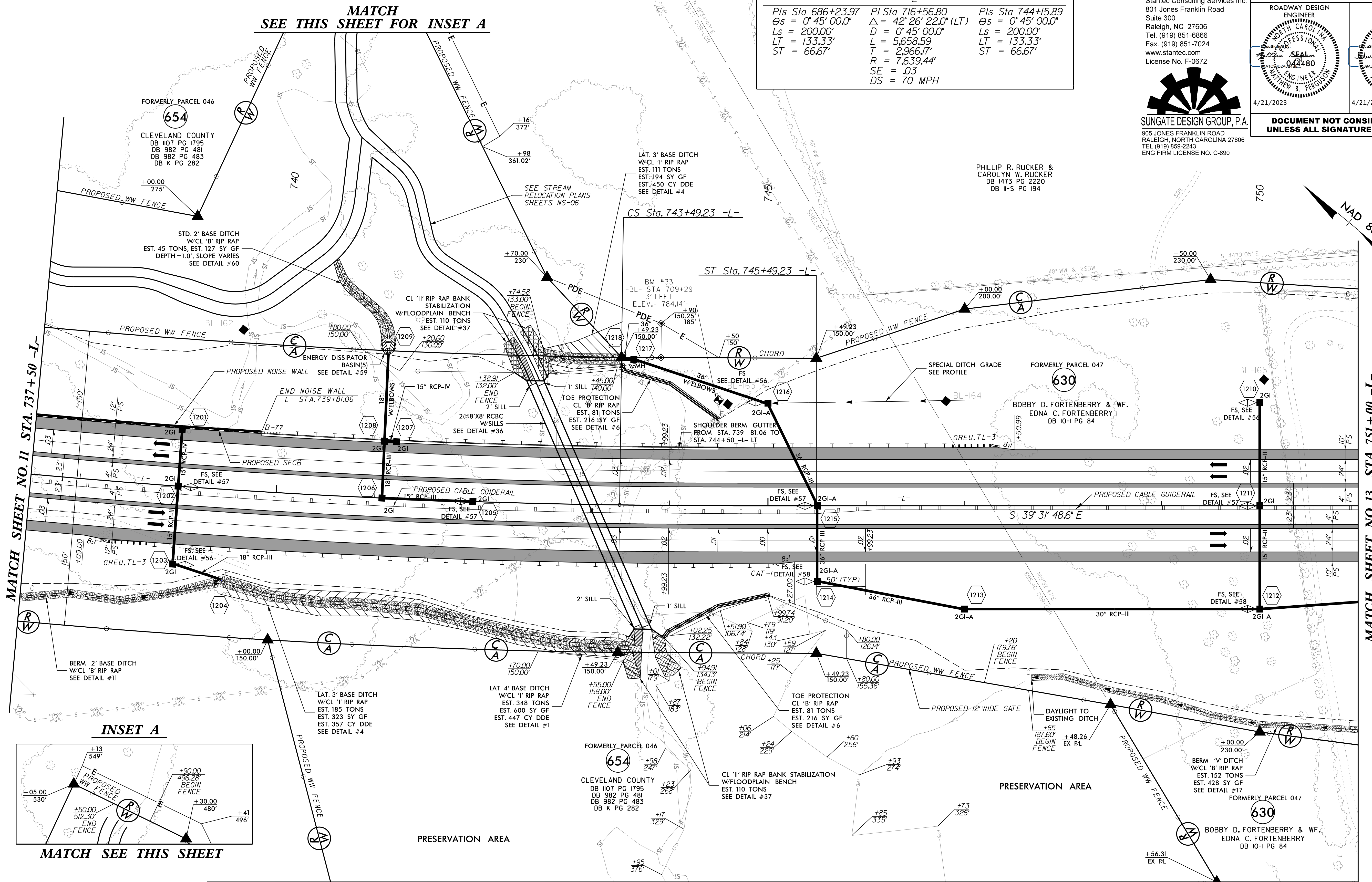
Stantec Consulting Services Inc.
801 Jones Franklin Road
Suite 300
Raleigh, NC 27606
Tel. (919) 851-6866
Fax. (919) 851-7024
www.stantec.com
License No. F-0672



SUNGATE DESIGN GROUP, P.A.
905 JONES FRANKLIN ROAD
RALEIGH, NORTH CAROLINA 27606
TEL (919) 859-2243
ENG FIRM LICENSE NO. C-890

PROJECT REFERENCE NO. R-2707D	SHEET NO. 12
ROADWAY DESIGN ENGINEER SEALING 044480 MATTHEW B. FERGOUSON	HYDRAULICS ENGINEER SEALING 26971 JOSHUA G. DALTON
4/21/2023	4/21/2023
DOCUMENT NOT CONSIDERED FINAL UNLESS ALL SIGNATURES COMPLETED	

-L-		
Pls Sta 686+23.97 Øs = 0' 45' 00.0" Ls = 200.00' LT = 133.33' ST = 66.67'	Pls Sta 716+56.80 Δ = 42° 26' 22.0" (LT) D = 0' 45' 00.0" L = 5,658.59 T = 2,966.17' R = 7639.44' SE = .03 DS = 70 MPH	Pls Sta 744+15.89 Øs = 0' 45' 00.0" Ls = 200.00' LT = 133.33' ST = 66.67'



MATCH SHEET NO. 11 STA. 737+50 -L-

MATCH SHEET NO. 13 STA. 751+00 -L-

MATCH SHEET NO. 12A

REFERENCE:
FOR -L- PROFILE, SEE SHEET NO. 31
FOR CULVERT PLANS, SEE C2-01 TO C2-05
FOR NOISE WALL PLANS, SEE SHEET SW3A-1 TO SW3A-4

4/16/2023 10:40:15 AM C:\Users\hujar-vis\documents\pwr-working\dm542562\R2707D_RDY_PSH_12.dgn