


8.17.7.99

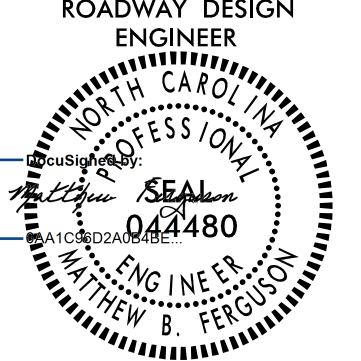
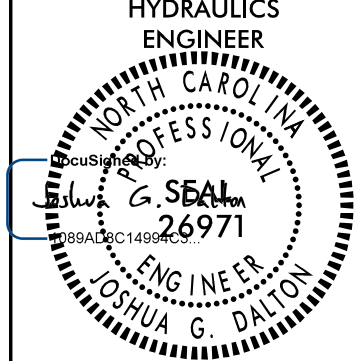
-L-		
Pls Sta 686+23.97 Ls = 200.00' LT = 133.33' ST = 66.67'	Pls Sta 716+56.80 Δ = 42° 26' 22.0" (LT) D = 0' 45' 00.0" L = 5,658.59 T = 2,966.17' R = 7,639.44' SE = .03 DS = 70 MPH	Pls Sta 744+15.89 Ls = 200.00' LT = 133.33' ST = 66.67'

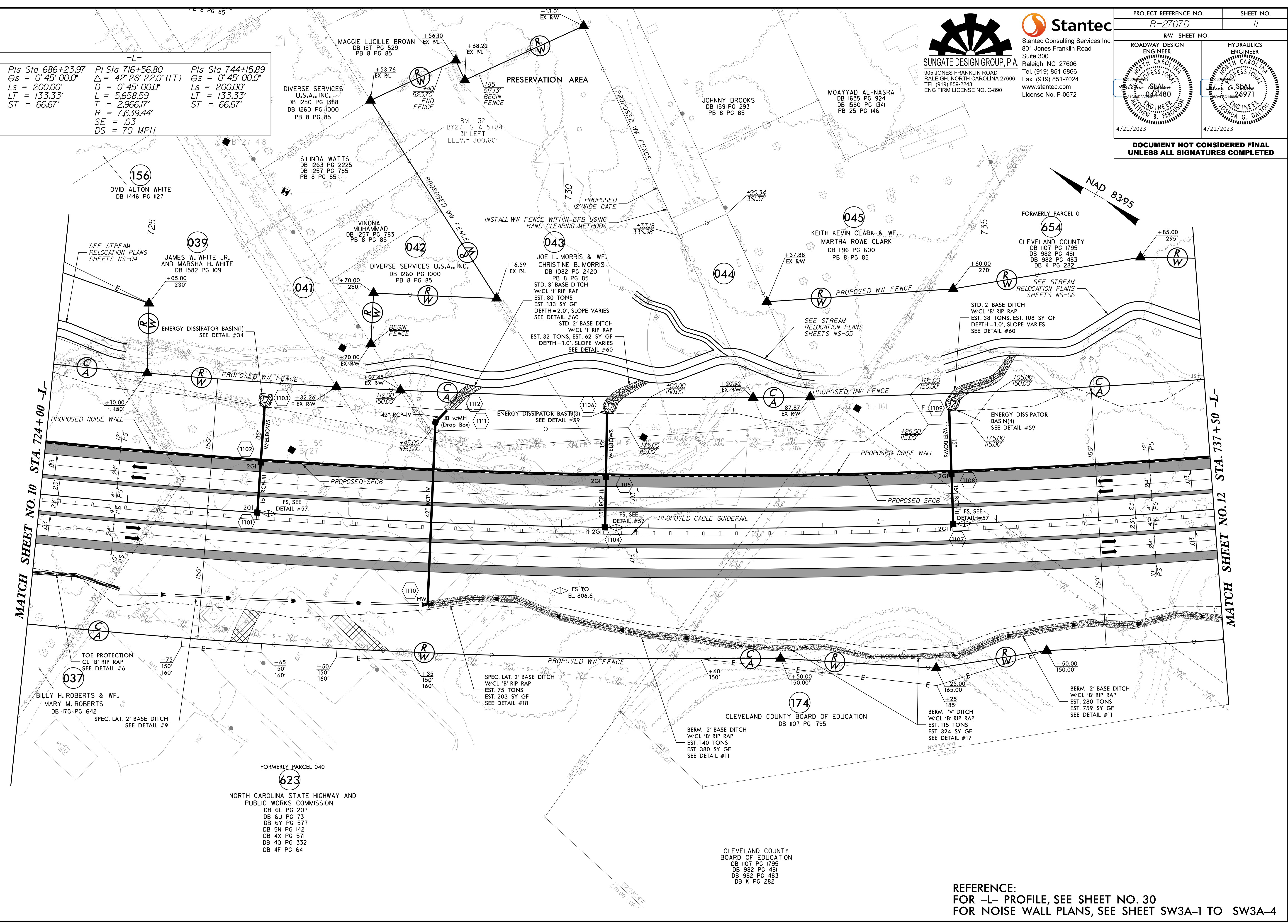


**SUNGATE DESIGN GROUP, P.A.**  
905 JONES FRANKLIN ROAD  
RALEIGH, NORTH CAROLINA 27606  
TEL (919) 859-2243  
ENG FIRM LICENSE NO. C-890



**Stantec**  
Stantec Consulting Services Inc.  
801 Jones Franklin Road  
Suite 300  
Raleigh, NC 27606  
Tel. (919) 851-6866  
Fax. (919) 851-7024  
www.stantec.com  
License No. F-0672

PROJECT REFERENCE NO. <i>R-2707D</i>	SHEET NO. <i>11</i>
RW SHEET NO.	HYDRAULICS ENGINEER
ROADWAY DESIGN ENGINEER	SEALING PROFESSIONAL ENGINEER
 MATTHEW B. FERGUSON 044480 4/21/2023	 JOSHUA G. DALTON 26971 4/21/2023
<b>DOCUMENT NOT CONSIDERED FINAL UNLESS ALL SIGNATURES COMPLETED</b>	



MATCH SHEET NO. 10 STA. 724+00 -L-

MATCH SHEET NO. 12 STA. 737+50 -L-

4/16/2023 tujuar-vis\documents\pwr-working\dms42562\R2707D\_RDY\_PSH\_11.dgn

REFERENCE:  
FOR -L- PROFILE, SEE SHEET NO. 30  
FOR NOISE WALL PLANS, SEE SHEET SW3A-1 TO SW3A-4