

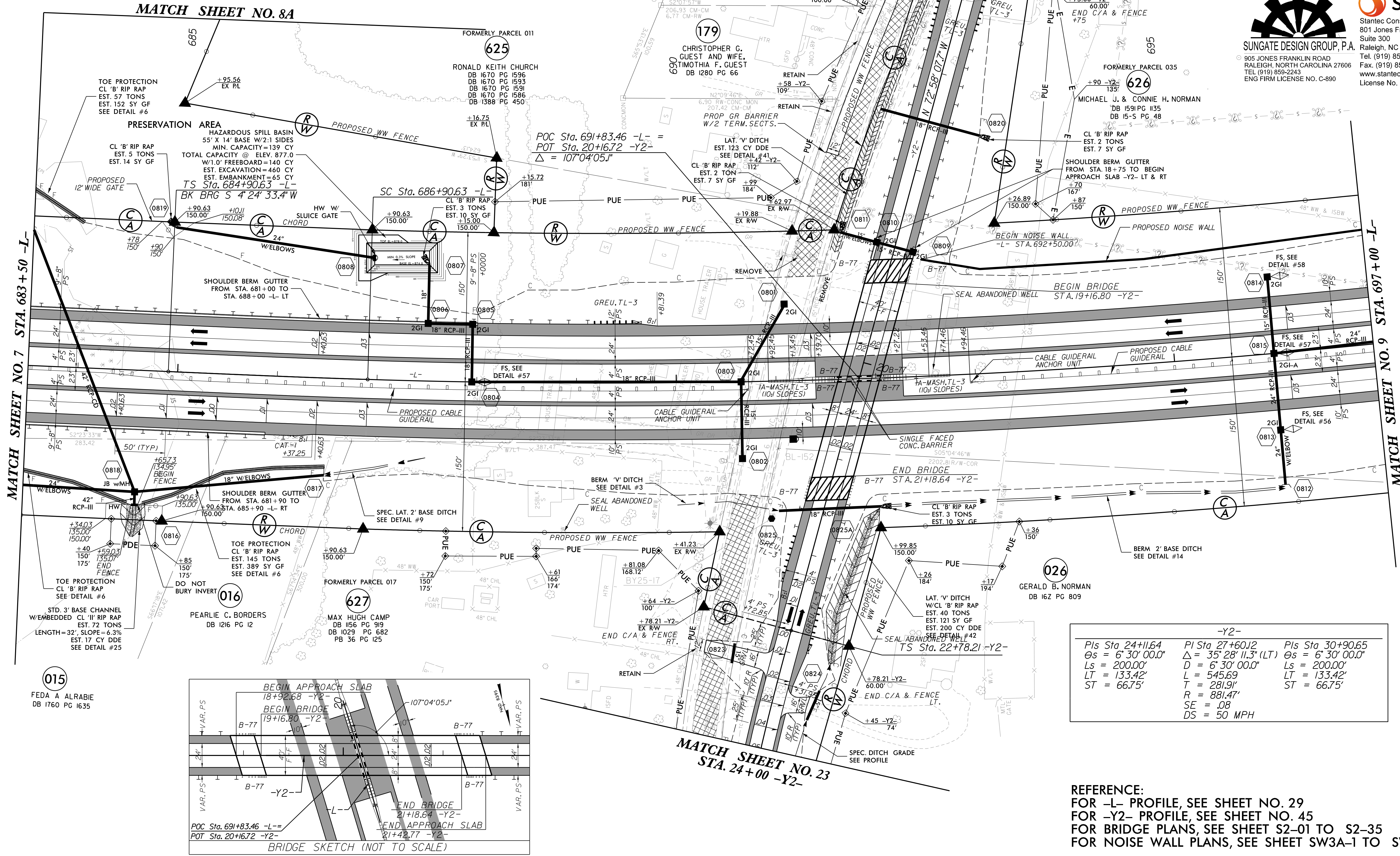
8.17.2023

PROJECT REFERENCE NO. R-2707D	SHEET NO. 8
RW SHEET NO.	
ROADWAY DESIGN ENGINEER SEALING 044480 4/21/2023	HYDRAULICS ENGINEER SEALING 26971 4/21/2023
DOCUMENT NOT CONSIDERED FINAL UNLESS ALL SIGNATURES COMPLETED	

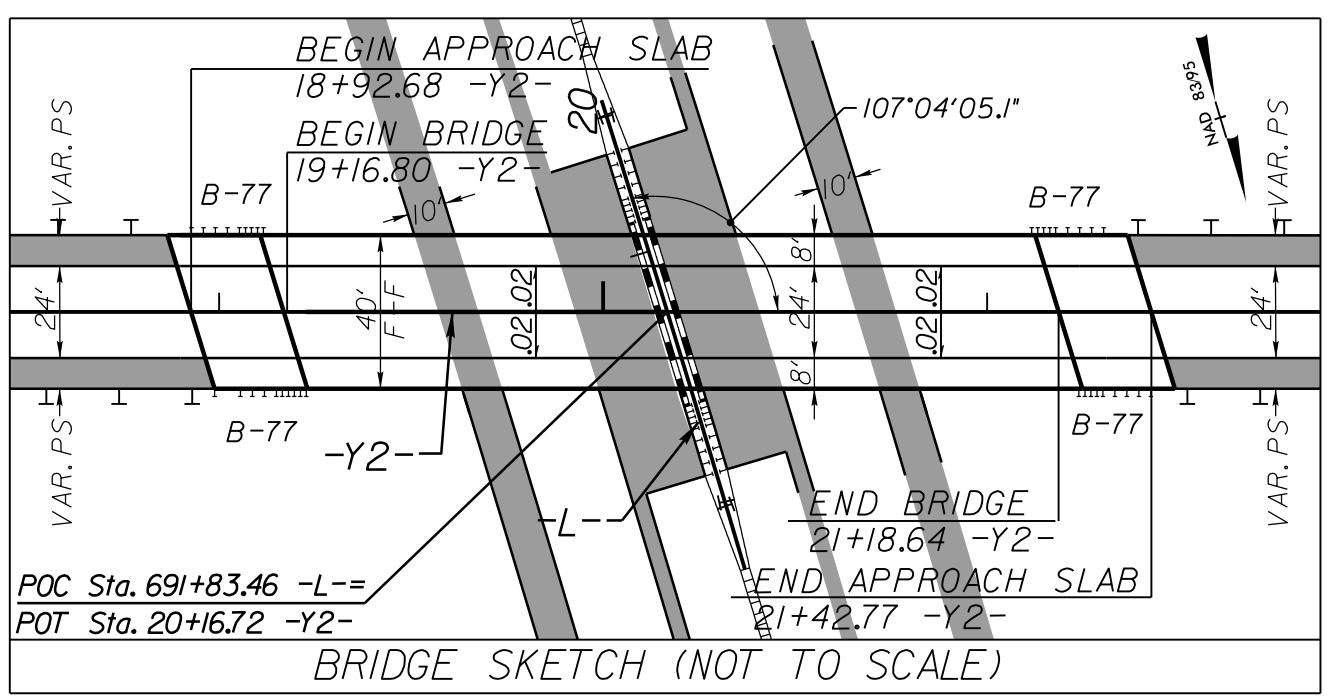
Stantec
Stantec Consulting Services Inc.
801 Jones Franklin Road
Suite 300
Raleigh, NC 27606
Tel. (919) 851-6866
Fax. (919) 851-7024
www.stantec.com
License No. F-0672

SUNGATE DESIGN GROUP, P.A.
905 JONES FRANKLIN ROAD
RALEIGH, NORTH CAROLINA 27606
TEL (919) 859-2243
ENG FIRM LICENSE NO. C-890

-L-		
Pls Sta 686+23.97 Es = 0' 45' 00.0" Ls = 200.00' LT = 133.33' ST = 66.67'	PI Sta 716+56.80 Δ = 42' 26' 22.0" (LT) D = 0' 45' 00.0" L = 5,658.59' T = 2,966.17' R = 7,639.44' SE = .03 DS = 70 MPH	Pls Sta 744+15.89 Es = 0' 45' 00.0" Ls = 200.00' LT = 133.33' ST = 66.67'



-Y2-		
Pls Sta 24+11.64 Es = 6' 30' 00.0" Ls = 200.00' LT = 133.42' ST = 66.75'	PI Sta 27+60.12 Δ = 35' 28' 11.3" (LT) D = 6' 30' 00.0" L = 545.69' T = 281.91' R = 881.47' SE = .08 DS = 50 MPH	Pls Sta 30+90.65 Es = 6' 30' 00.0" Ls = 200.00' LT = 133.42' ST = 66.75'



4/16/2023
C:\Users\j...r-vis\documents\p...working\dms42562\R2707D_RDY_PSH_08.dgn