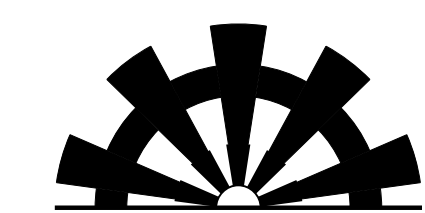


8.17.2023



SUNGATE DESIGN GROUP, P.A.
905 JONES FRANKLIN ROAD
RALEIGH, NORTH CAROLINA 27606
TEL (919) 859-2243
ENG FIRM LICENSE NO. C-890



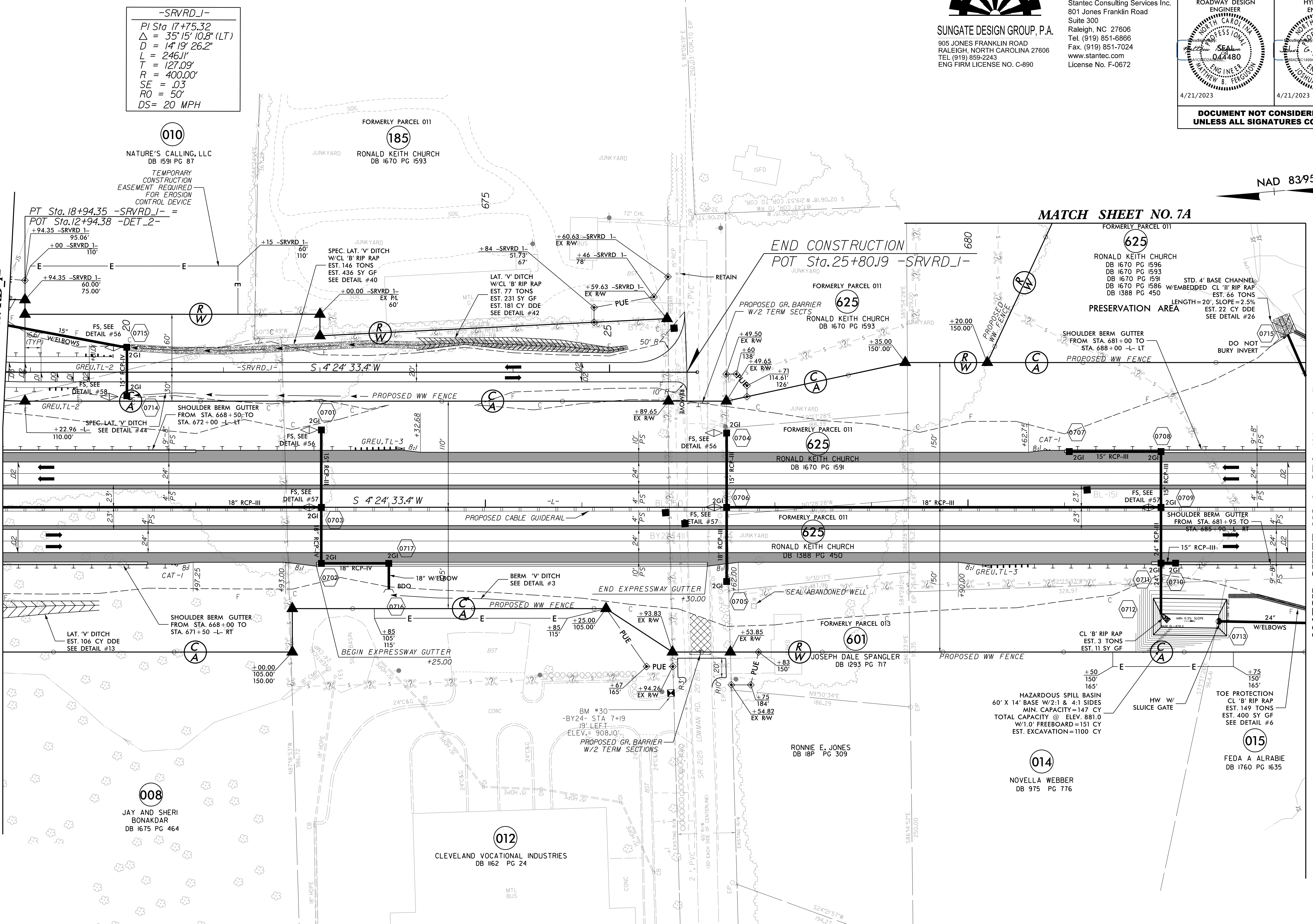
Stantec Consulting Services Inc.
801 Jones Franklin Road
Suite 300
Raleigh, NC 27606
Tel. (919) 851-6866
Fax. (919) 851-7024
www.stantec.com
License No. F-0672

PROJECT REFERENCE NO. R-2707D		SHEET NO. 7	
RW SHEET NO.		HYDRAULICS ENGINEER	
ROADWAY DESIGN ENGINEER		NORTH CAROLINA PROFESSIONAL ENGINEER Matthew G. Seaman 044480 Matthew B. Ferguson 044480	
4/21/2023		4/21/2023	
DOCUMENT NOT CONSIDERED FINAL UNLESS ALL SIGNATURES COMPLETED			

MATCH SHEET NO. 6
STA. 670+00 -L-

MATCH SHEET NO. 6
STA. 18+00 -L-

MATCH SHEET NO. 8
STA. 683+50 -L-



-SRVD 1-

PI Sta 17+75.32
 $\Delta = 35^\circ 15' 10.8''$ (LT)
 $D = 14^\circ 19' 26.2''$
 $L = 246.11'$
 $T = 127.09'$
 $R = 400.00'$
 $SE = .03$
 $RO = 50'$
 $DS = 20$ MPH

010
 NATURE'S CALLING, LLC
 DB 1591 PG 87

185
 RONALD KEITH CHURCH
 DB 1670 PG 1593

625
 RONALD KEITH CHURCH
 DB 1670 PG 1593

625
 RONALD KEITH CHURCH
 DB 1670 PG 1596
 DB 1670 PG 1593
 DB 1670 PG 1591
 DB 1670 PG 1586
 DB 1388 PG 450

008
 JAY AND SHERI
 BONAKDAR
 DB 1675 PG 464

012
 CLEVELAND VOCATIONAL INDUSTRIES
 DB 1662 PG 24

601
 JOSEPH DALE SPANGLER
 DB 1293 PG 717

014
 NOVELLA WEBBER
 DB 975 PG 776

015
 FEDA A ALRABIE
 DB 1760 PG 1635

REFERENCES:
 FOR -L- PROFILE, SEE SHEET NO. 28
 FOR -SRVD 1- PROFILE, SEE SHEET NO. 50

4/16/2023 h:\jar-vis\documents\pwr-working\dms42562\R2707D_RDY_PSH_07.dgn