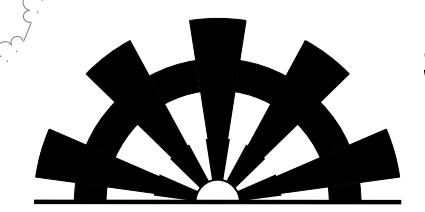


8.17.19

-L-		
Pls Sta 617+78.16 Os = 1' 33" 45.0" Ls = 250.00' LT = 166.67' ST = 83.34'	Pl Sta 640+73.56 Δ = 5' 31" 25.8" (RT) D = 1' 15" 00.0" L = 4121.91' T = 2,212.07' R = 4,583.66' SE = .05 DS = 70 MPH	Pls Sta 660+66.73 Os = 1' 33" 45.0" Ls = 250.00' LT = 166.67' ST = 83.34'

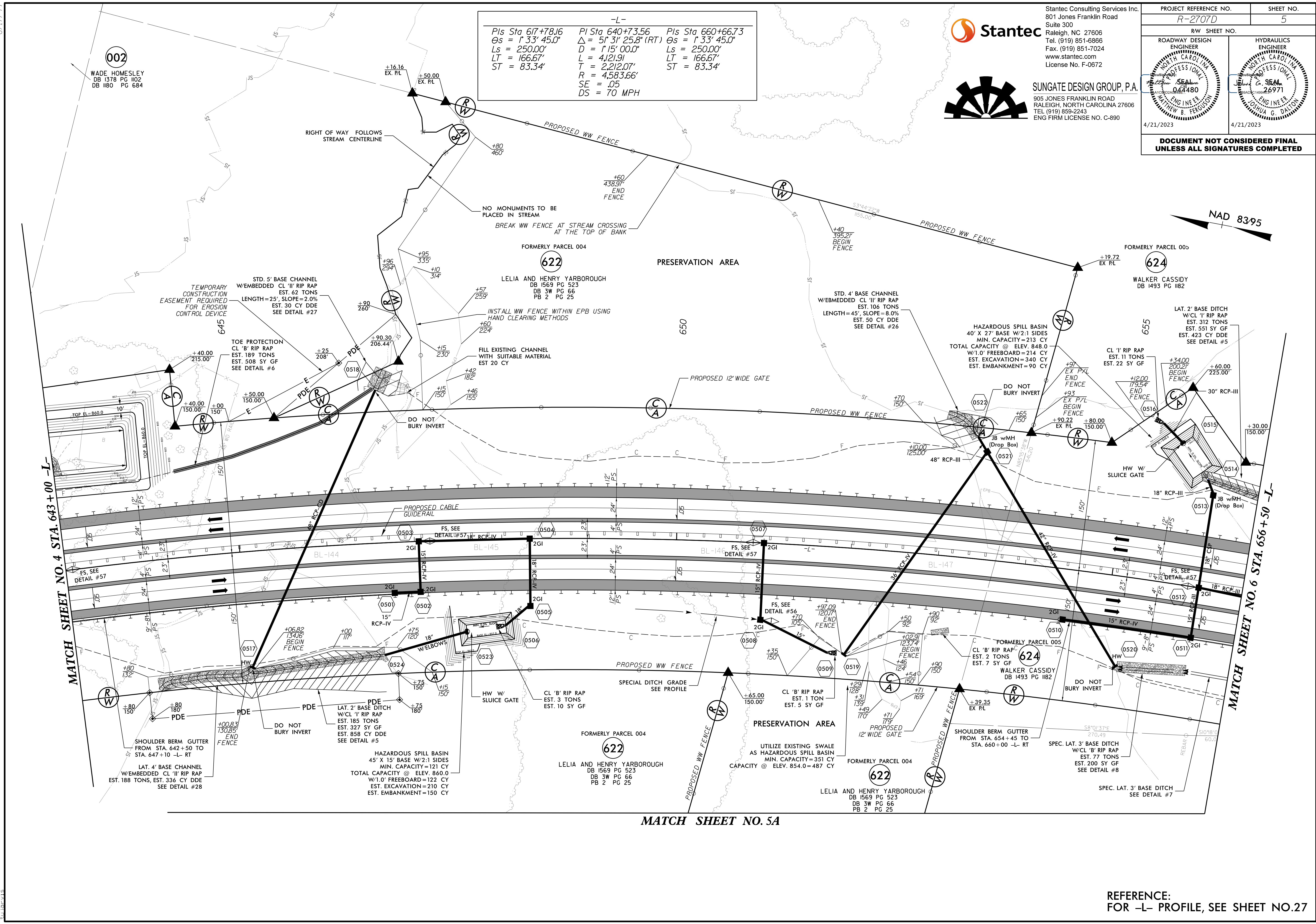


Stantec Consulting Services Inc.
801 Jones Franklin Road
Suite 300
Raleigh, NC 27606
Tel. (919) 851-6866
Fax. (919) 851-7024
www.stantec.com
License No. F-0672



SUNGATE DESIGN GROUP, P.A.
905 JONES FRANKLIN ROAD
RALEIGH, NORTH CAROLINA 27606
TEL (919) 858-2243
ENG FIRM LICENSE NO. C-890

PROJECT REFERENCE NO. R-2707D	SHEET NO. 5
RW SHEET NO.	
ROADWAY DESIGN ENGINEER MATTHEW B. FERGOUSON 044480	HYDRAULICS ENGINEER JOSHUA G. DALTON 26971
4/21/2023	4/21/2023
DOCUMENT NOT CONSIDERED FINAL UNLESS ALL SIGNATURES COMPLETED	



MATCH SHEET NO. 4 STA. 643+00 -L-

MATCH SHEET NO. 6 STA. 656+50 -L-

MATCH SHEET NO. 5A

REFERENCE:
FOR -L- PROFILE, SEE SHEET NO.27

4/16/2023 10:40:15 AM C:\Users\jujorvis\documents\pwr_working\dm542562\R2707D_RDY_PSH_05.dgn