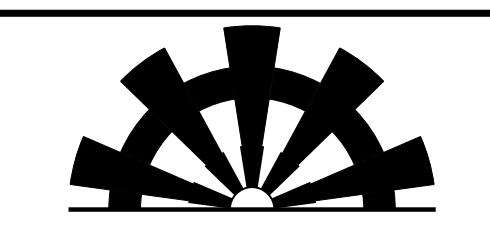


8.17.19



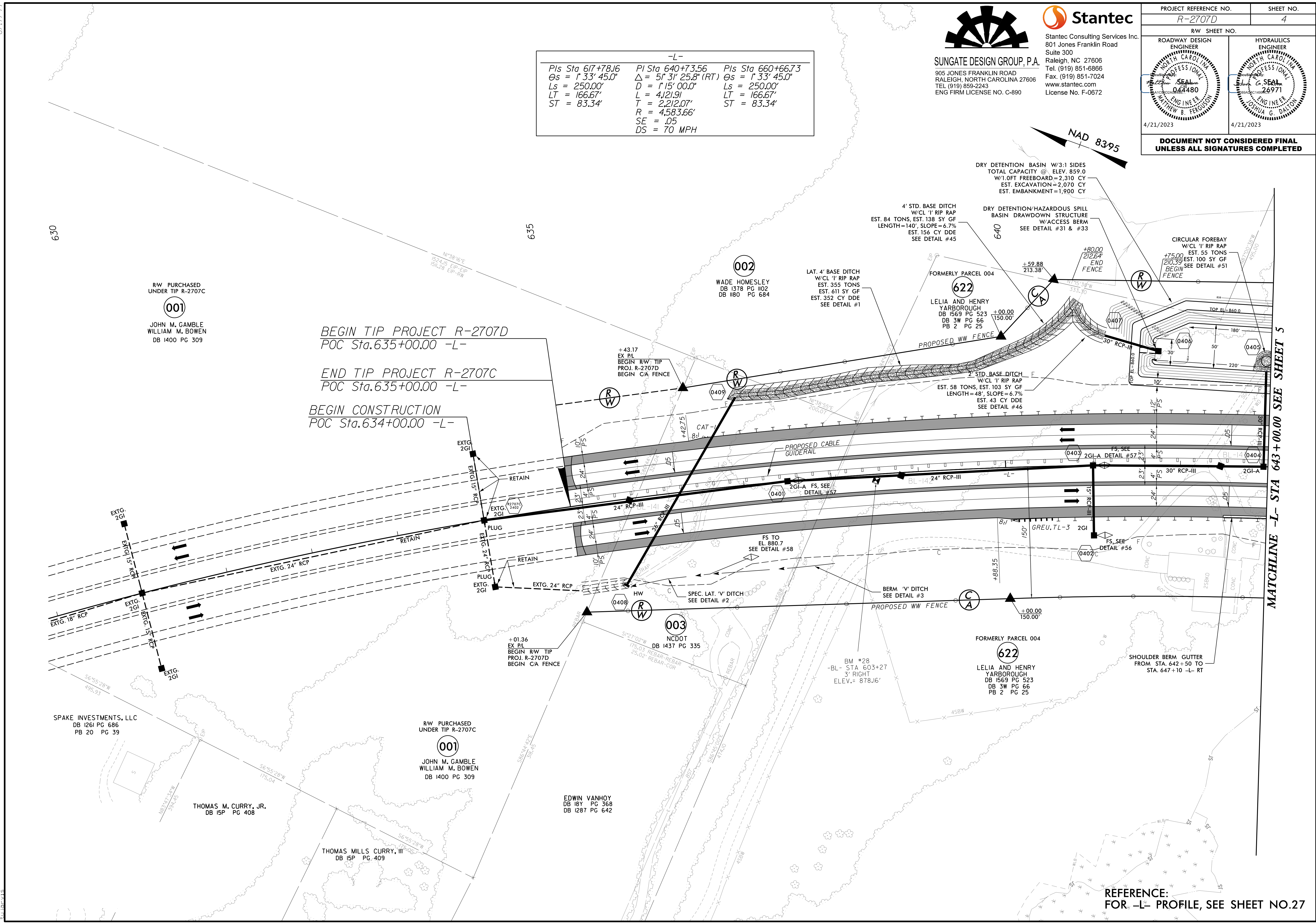
SUNGATE DESIGN GROUP, P.A.  
905 JONES FRANKLIN ROAD  
RALEIGH, NORTH CAROLINA 27606  
TEL (919) 859-2243  
ENG FIRM LICENSE NO. C-890



Stantec Consulting Services Inc.  
801 Jones Franklin Road  
Suite 300  
Raleigh, NC 27606  
Tel. (919) 851-6866  
Fax. (919) 851-7024  
www.stantec.com  
License No. F-0672

PROJECT REFERENCE NO. <i>R-2707D</i>	SHEET NO. 4
RW SHEET NO.	HYDRAULICS ENGINEER
ROADWAY DESIGN ENGINEER	HYDRAULICS ENGINEER
4/21/2023	4/21/2023
<b>DOCUMENT NOT CONSIDERED FINAL UNLESS ALL SIGNATURES COMPLETED</b>	

-L-		
<i>Pls Sta 617+78.16</i>	<i>Pls Sta 640+73.56</i>	<i>Pls Sta 660+66.73</i>
<i>Os = 1' 33" 45.0"</i>	<i>Δ = 51' 31" 25.8" (RT)</i>	<i>Os = 1' 33" 45.0"</i>
<i>Ls = 250.00'</i>	<i>D = 1' 15" 00.0"</i>	<i>Ls = 250.00'</i>
<i>LT = 166.67'</i>	<i>L = 412.91'</i>	<i>LT = 166.67'</i>
<i>ST = 83.34'</i>	<i>T = 2,212.07'</i>	<i>ST = 83.34'</i>
	<i>R = 4,583.66'</i>	
	<i>SE = .05</i>	
	<i>DS = 70 MPH</i>	



RW PURCHASED UNDER TIP R-2707C  
**001**  
JOHN M. GAMBLE  
WILLIAM M. BOWEN  
DB 1400 PG 309

BEGIN TIP PROJECT R-2707D  
POC Sta. 635+00.00 -L-

END TIP PROJECT R-2707C  
POC Sta. 635+00.00 -L-

BEGIN CONSTRUCTION  
POC Sta. 634+00.00 -L-

SPAKE INVESTMENTS, LLC  
DB 1261 PG 686  
PB 20 PG 39

RW PURCHASED UNDER TIP R-2707C  
**001**  
JOHN M. GAMBLE  
WILLIAM M. BOWEN  
DB 1400 PG 309

THOMAS M. CURRY, JR.  
DB 15P PG 408

THOMAS MILLS CURRY, III  
DB 15P PG 409

EDWIN VANHOY  
DB 18Y PG 368  
DB 1287 PG 642

**003**  
NCDOT  
DB 1437 PG 335

**622**  
LELIA AND HENRY  
YARBOROUGH  
DB 1569 PG 523  
DB 3W PG 66  
PB 2 PG 25

REFERENCE:  
FOR -L- PROFILE, SEE SHEET NO. 27

MATCHLINE -L- STA 643+00.00 SEE SHEET 5

4/16/2023 3:40:53 pm \\jujor-vis\documents\pwr-working\dms42562\R2707D\_RDY\_PSH\_04.dgn