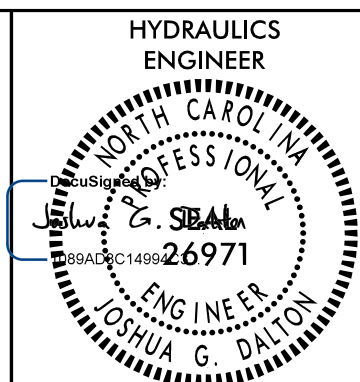
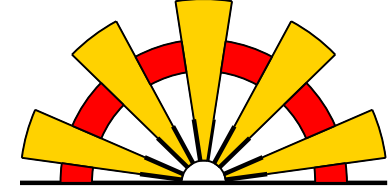


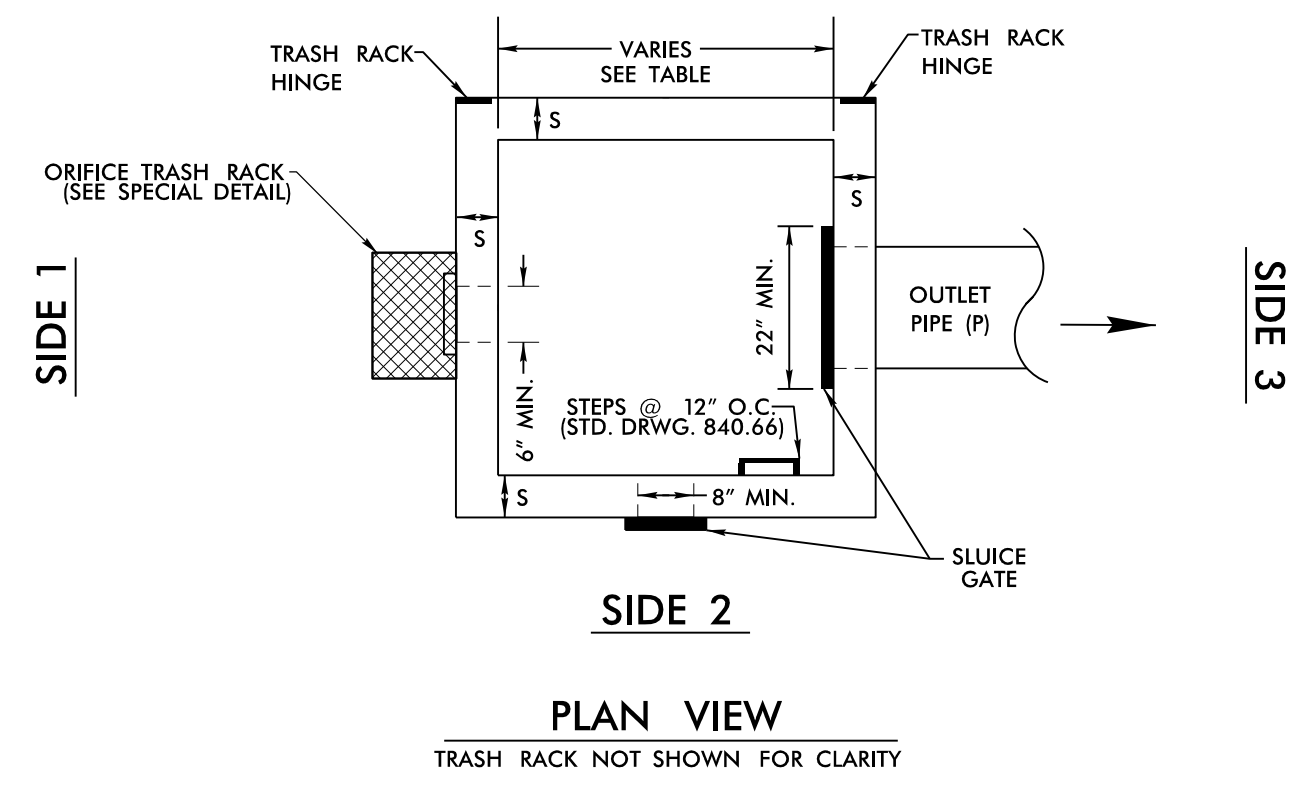
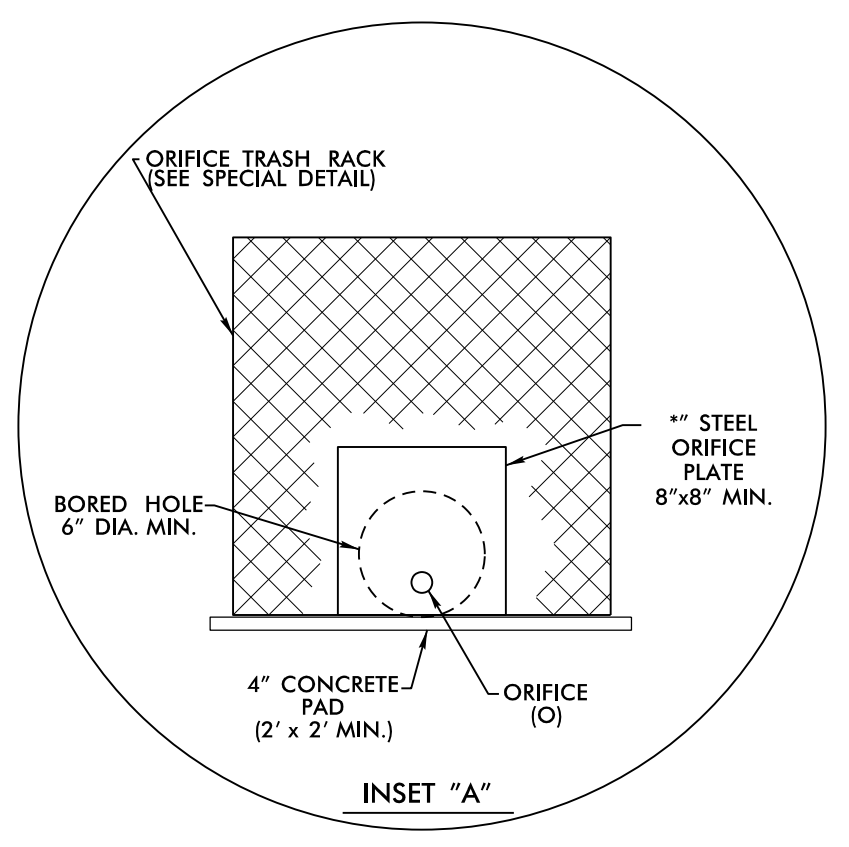
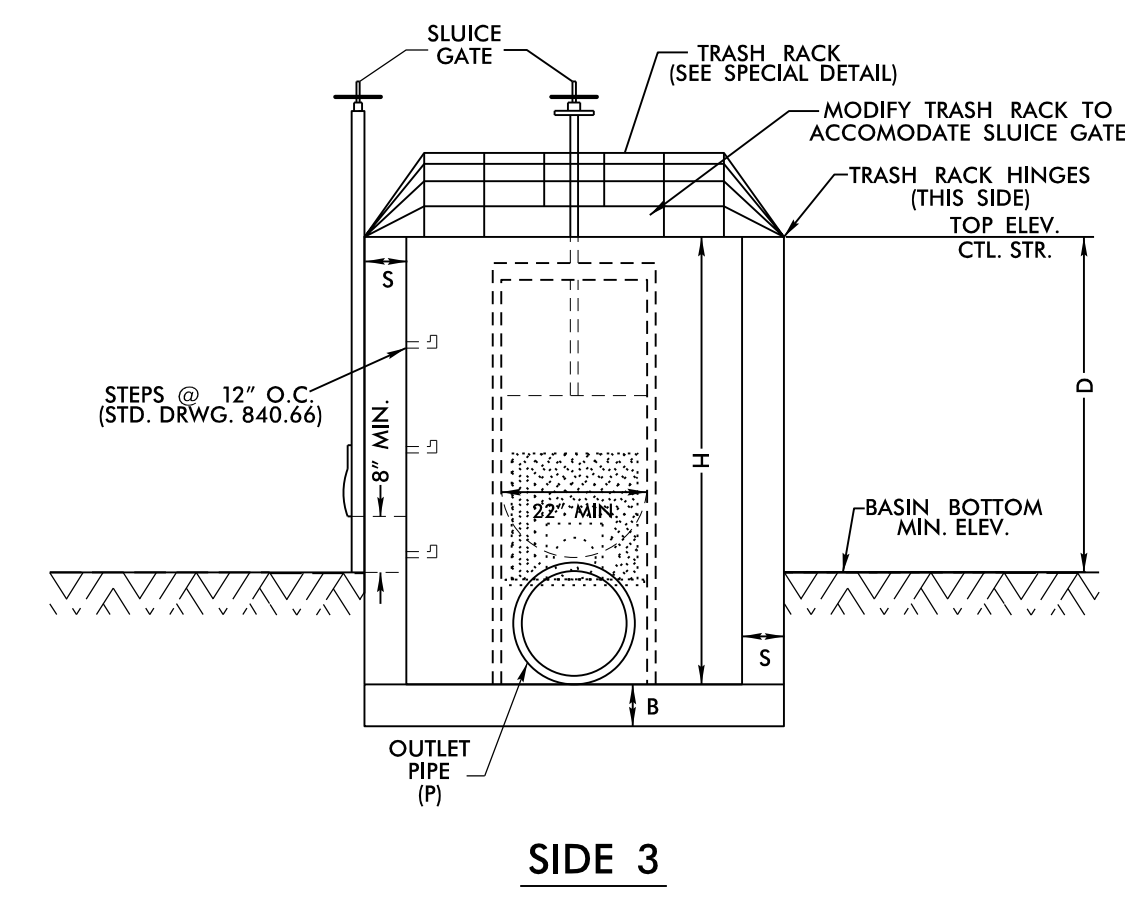
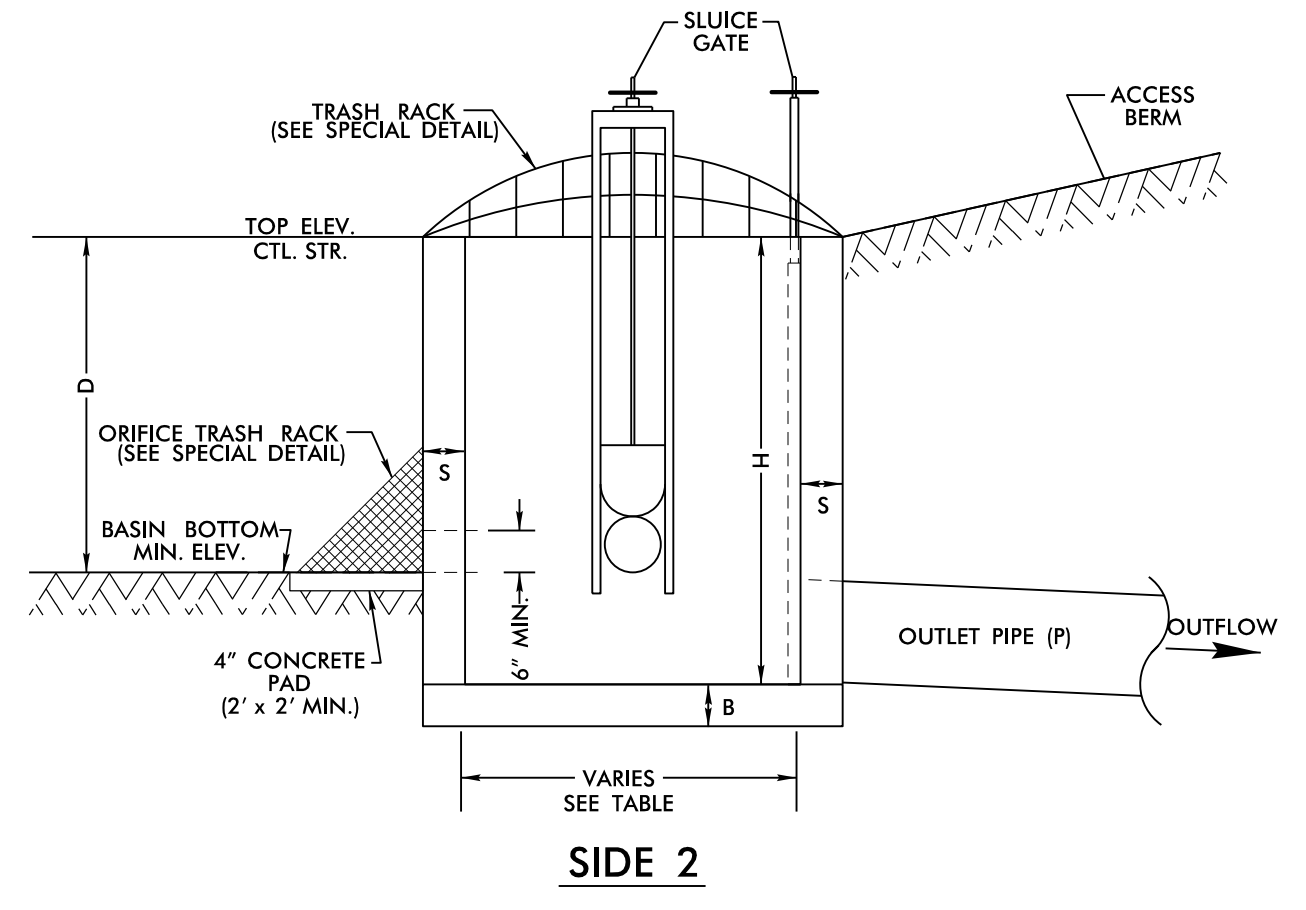
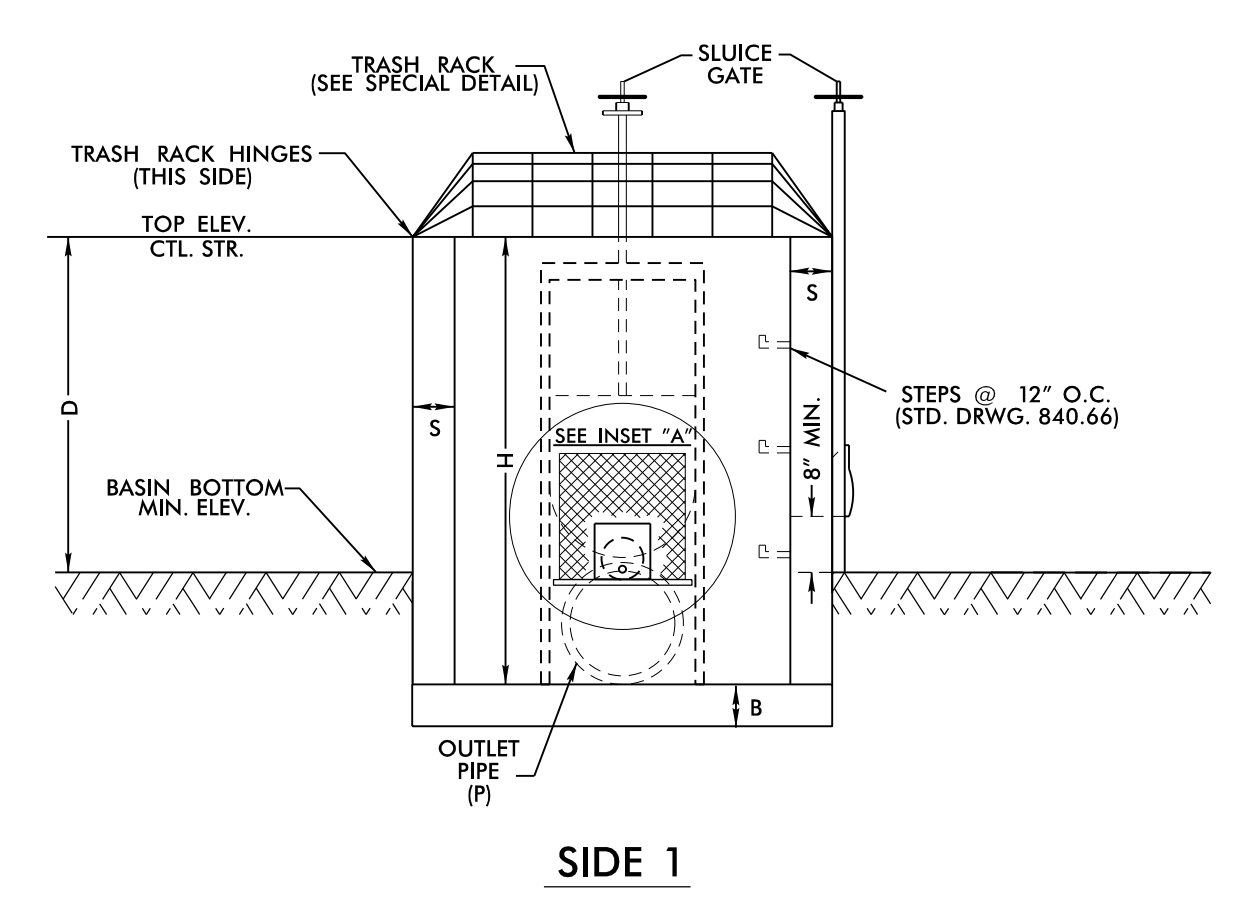
PROJECT REFERENCE NO. <i>R-2707D</i>	SHEET NO. <i>2D-2</i>
HYDRAULICS ENGINEER  4/21/2023	

DOCUMENT NOT CONSIDERED FINAL UNLESS ALL SIGNATURES COMPLETED



SUNGATE DESIGN GROUP, P.A.
 905 JONES FRANKLIN ROAD
 RALEIGH, NORTH CAROLINA 27606
 TEL (919) 859-2243
 ENG FIRM LICENSE NO. C-890

DETAIL #31
DRY DETENTION/HAZARDOUS SPILL BASIN
DRAWDOWN STRUCTURE
 NOT TO SCALE



- NOTES:**
1. THE BASIN SHOULD BE DESIGNED TO HOLD THE HAZARDOUS SPILL VOLUME ABOVE THE WATER QUALITY VOLUME (WQV) ELEVATION.
 2. TOP ELEVATION OF CONTROL STRUCTURE (WEIR ELEVATION) SHOULD BE SET AT THE WQV ELEVATION.
 3. 15" MINIMUM DIAMETER FOR OUTLET PIPE.
 4. 2" MINIMUM DIAMETER ORIFICE. IF ORIFICE IS GREATER THAN 6", A STEEL PLATE IS NOT REQUIRED.
 5. NO BEDDING MATERIAL TO BE USED. THEREFORE, DO NOT FOLLOW STANDARD DRAWINGS FOR METHOD OF PIPE INSTALLATION FOR OUTLET PIPE THROUGH EMBANKMENT.
 6. 8" MIN. SLUICE GATE IS FOR MAINTENANCE AND SHOULD REMAIN CLOSED DURING NORMAL OPERATION. A GATE VALVE MAY BE USED IN LIEU OF THE 8" SLUICE GATE.
 7. 22" MIN. SLUICE GATE AT THE OUTLET PIPE IS FOR SPILL CONTAINMENT AND SHOULD REMAIN OPEN DURING NORMAL OPERATION.
 8. SLUICE GATE SHALL PROVIDE WATERTIGHT SEAL. PROVIDE ADEQUATE CLEARANCE FOR GATE OPERATION AND FOR PROPER SEATING OF GATE OVER PIPE.
 9. SELECT BOX STANDARD AS REQUIRED TO ACCOMMODATE SLUICE GATE AND ORIFICE TRASH RACK WIDTH.
 10. ENSURE TRASH RACK OPENS FREELY AND WITHOUT INTERFERENCE WITH SLUICE GATES.
 11. ADJUST FOOTER DIMENSIONS AS NEEDED FOR ANTI-FLOTATION.
 12. PAYMENT OF TRASH RACKS ARE INCIDENTAL TO BASIN DRAWDOWN STRUCTURE.
 13. 4" CONCRETE ORIFICE TRASH RACK PAD INCIDENTAL TO BASIN DRAWDOWN STRUCTURE.

MINIMUM DIMENSIONS FOR DRY DETENTION BASIN DRAWDOWN STRUCTURE											
STATION	STRUCTURE NUMBER	S (INCHES) 6" MIN.	B (INCHES) 6" MIN.	BASIN BOTTOM MINIMUM ELEV.	TOP ELEVATION CONTROL STRUCTURE	MAX. STORAGE DEPTH(D) FEET	INV. ELEV. CTL. STR.	CTL. STR. DIMENSIONS (W x L x H)	ORIFICE DIAMETER (O) INCHES	ORIFICE INV. ELEV.	OUTLET PIPE DIAMETER(P) INCHES
641+74 -L- LT	0406	6"	18"	854.0	858.0	4.0'	852.0	5.0' X 5.0' X 6.0'	2.5"	854.0	30"
668+44 -L- LT	0615	6"	18"	867.0	870.0	3.0'	865.0	5.0' X 5.0' X 5.0'	2.0"	867.0	24"