

NO.	DATE	REVISIONS

SHEAR POINT DIAGRAM

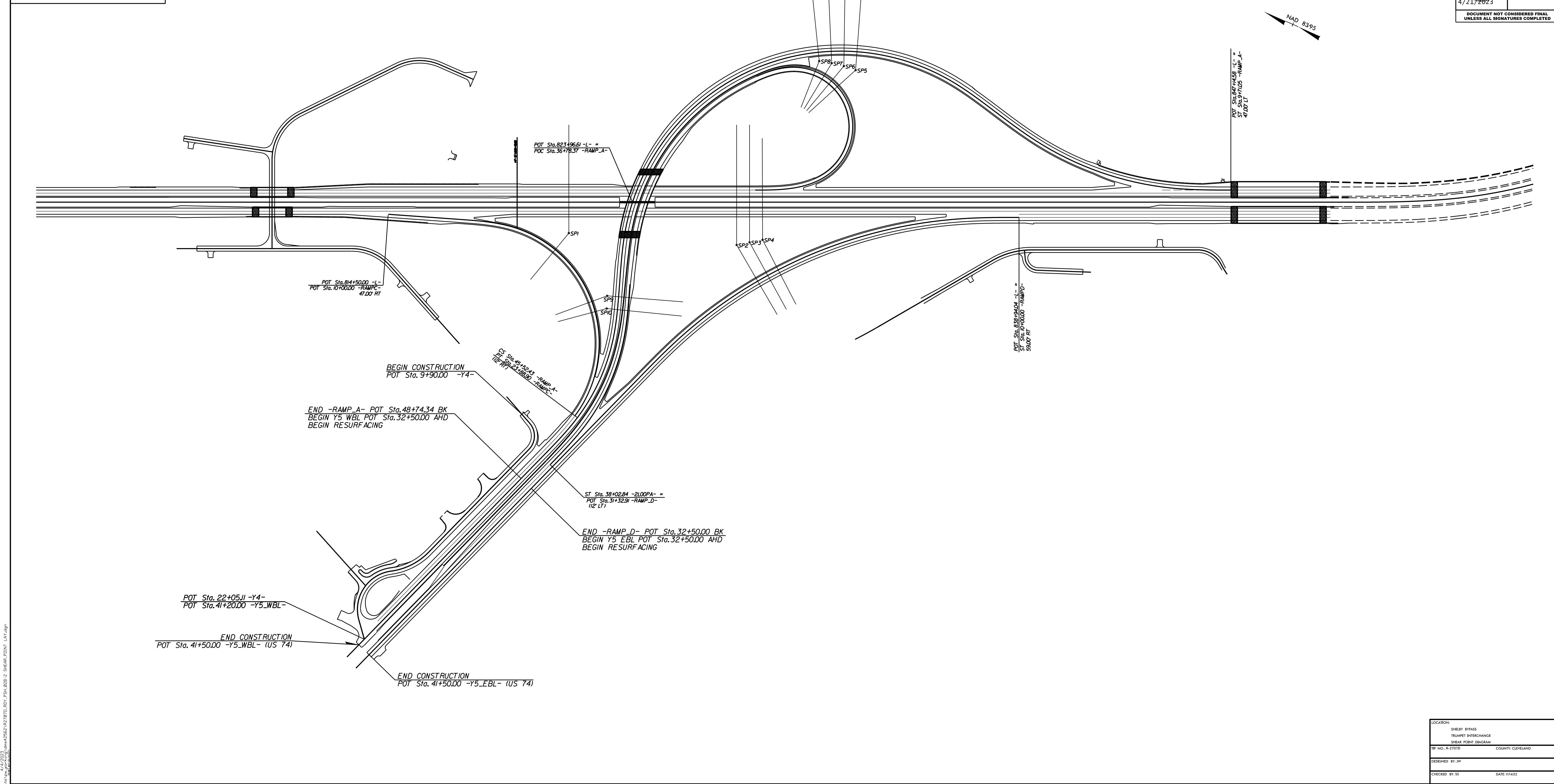
*SP - DENOTES SHEAR POINT



Stantec Consulting Services Inc.
801 Jones Franklin Road
Suite 300
Cleveland, OH 44115
Tel: (216) 861-4800
Fax: (216) 861-7004
www.stantec.com
License No. F-0072

PROJECT REFERENCE NO. **R-2707D** SHEET NO. **2B-2**

ROADWAY DESIGN
ENGINEER
[Signature]
044480
4/21/2023
DOCUMENT NOT CONSIDERED FINAL
UNLESS ALL SIGNATURES COMPLETED



LOCATION:	
SHELBY BYPASS	
TRUMPET INTERCHANGE	
SHEAR POINT DIAGRAM	
SP NO. R-2707D	COUNTY CLEVELAND
DESIGNED BY: JH	
CHECKED BY: SS	DATE 11/14/22

4/21/2023 10:45:00 AM C:\Users\jgordon\Documents\2023\04\21\2023\04212023_017_P54_02B_2_SHEAR_POINT_1.dwg
 C:\Users\jgordon\Documents\2023\04\21\2023\04212023_017_P54_02B_2_SHEAR_POINT_1.dwg