

INDEX

- 1. TITLE SHEET
- 2. TABLE OF CONTENTS UNDER RUNS
- 3. THREE VIEWS OF BOX CULVERT ENT STA 375+57.12
- 4. BOX CULVERT APPROACHES ENT STA 375+57.12
- 5. GENERAL DIMENSIONS OF BRIDGE STA 375+90.5
- 6. STANDARD R.C.C. BRIDGE STA 375+90.5
- 7. SUB STRUCTURE BRIDGE STA 375+90.5
- 8. TRANSVERSE BRIDGE STA 375+90.5
- 9. STANDARD RIP-RAP DETAILS
- 10. STANDARD APPROACHES CURBS & WEDGE PLATES
- 11. STANDARD NOTES FOR STRUCTURES
- 12. STANDARD FORMS FOR CULVERT FLOOR SLAB
- 13. STANDARD EXCAVATION CHIT (K.D.A.)
- 14. CLASS A CONCRETE CULVERT STA 378+57.12
- 15. CLASS A CONC SUB STRUCTURE BRIDGE STA 375+90.5
- 16. STANDARD QUANTITIES
- 17. THE FINAL ESTIMATE SHEET

FINAL ESTIMATE ON NORTH CAROLINA PROJECT NO B18238
FOR STRUCTURES ON
US 74 FROM SOUTH WASHINGTON ST. IN SHELBY SOUTHERST TO R POINT APPROX.
40' WEST OF KINGS MOUNTAIN WEST CITY LIMIT
CLEVELAND COUNTY
DIVISION NO 12

CONTRACTOR - DICKERSON, INC. - MONROE, NC
CONTRACT DATED - MAY 7, 1957
WORK COMPLETED - MARCH 4, 1959
E.L. KEMPLER - DIVISION ENGINEER
W.R. McNEILL - RESIDENT ENGINEER
G.G. BESS - MASONRY INSPECTOR

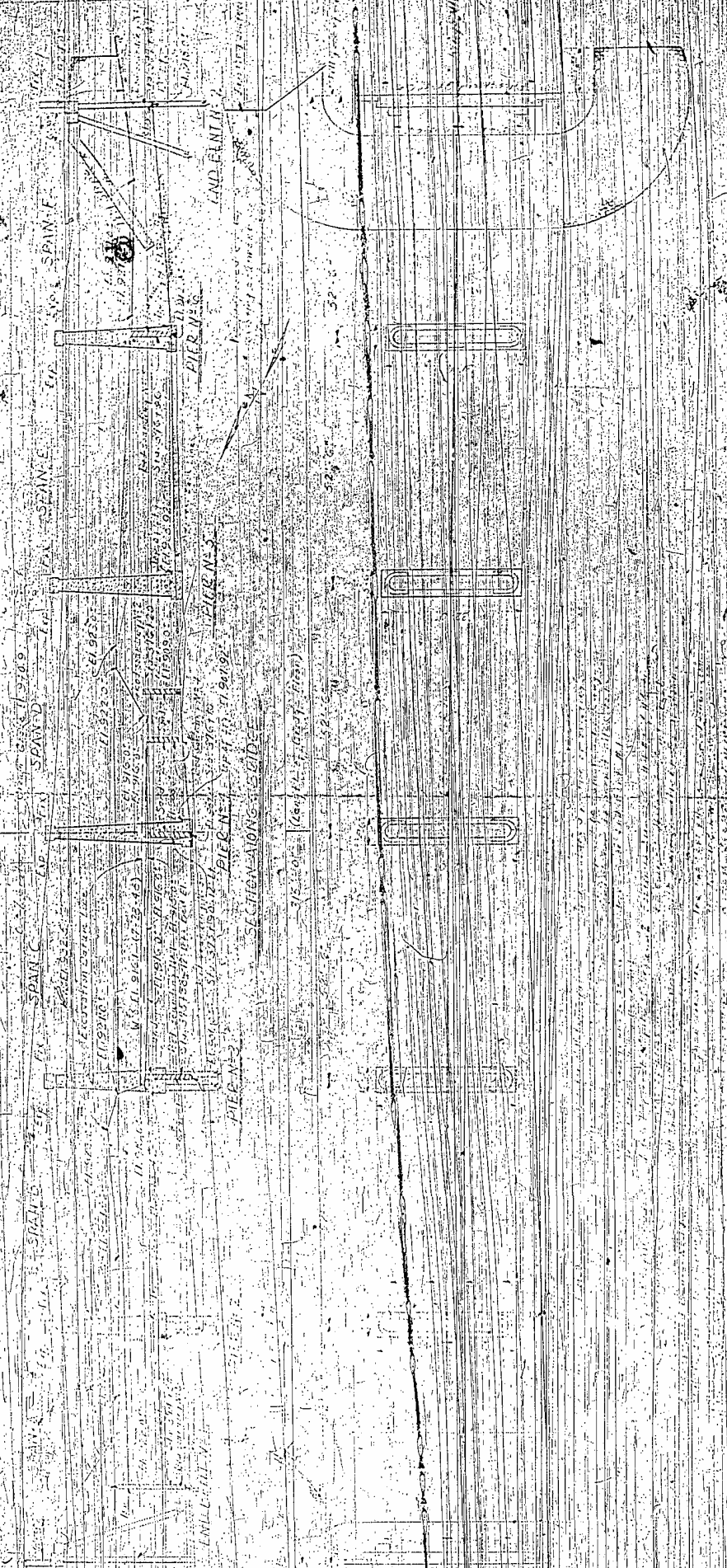
NOTE: The field notes, plans and detailed estimates have been
as a part of the final estimate as follows:

3 - Resident Engineers Office

Cleveland
101

Doc # 683
Pos # 1

SECTION 1

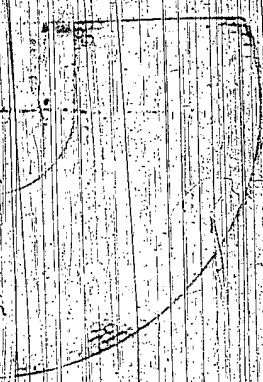
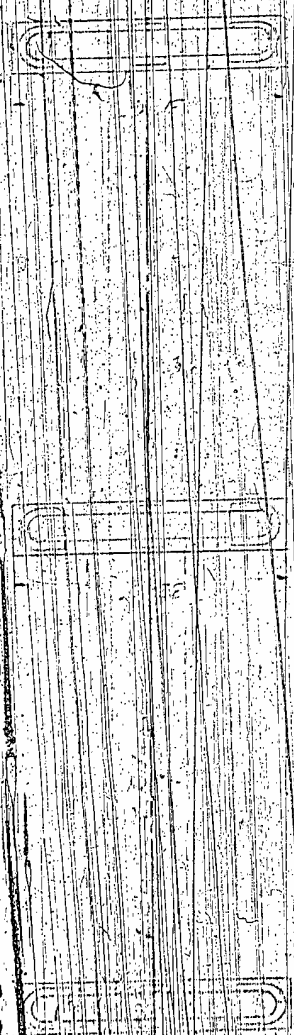


PROJECT NO. 1234
SHELBY COUNTY

SECTION 1

STATE HIGHWAY 106
PUBLIC WORKS COMMISSION
GENERAL PLANNING
CONSTRUCTION
CIVIL ENGINEERING
OFFICE





PROJECT NO. 1000
 STATE OF ILLINOIS
 COUNTY

BILL OF MATERIAL

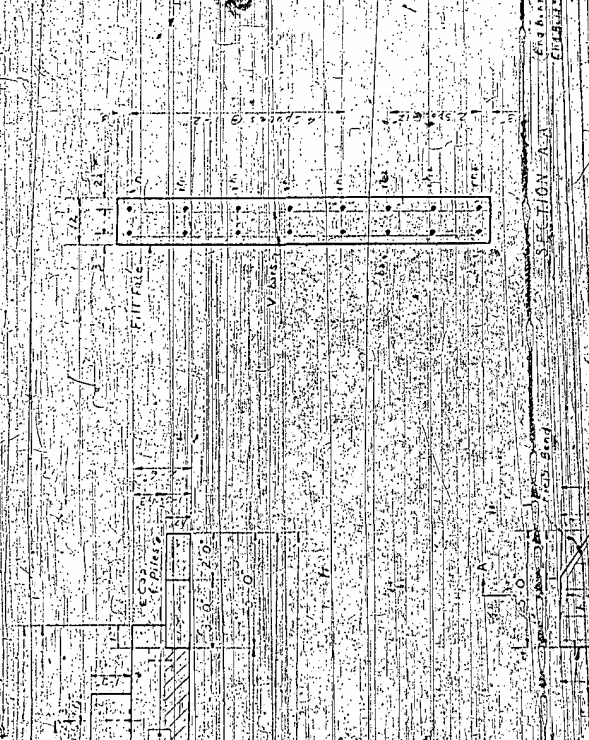
NO.	DESCRIPTION	QUANTITY	UNIT	PRICE	TOTAL
1	CONCRETE	10,000	CU YD	1.00	10,000.00
2	STEEL	100	TONS	100.00	10,000.00
3	BRICK	100,000	SQ YD	0.10	10,000.00
4	CEMENT	100	TONS	100.00	10,000.00
5	GRAVEL	10,000	CU YD	0.10	1,000.00
6	SAND	10,000	CU YD	0.10	1,000.00
7	WOOD	100	CU YD	0.10	10,000.00
8	PAINT	100	GALES	100.00	10,000.00
9	LABOR	10,000	HOURS	1.00	10,000.00
10	OVERHEAD	10,000	PERCENT	0.10	1,000.00
11	TOTAL				100,000.00

STATE OF ILLINOIS
 STATE HIGHWAY AND
 PUBLIC WORKS COMMISSION
 GENERAL DRAWING
 FOR BRIDGE OVER
 BUFFALO CREEK
 APRIL 1917

FORM 7-580

**BILL OF MATERIAL FOR
CONCRETE BERT BERTHO**

NO.	DESCRIPTION	QTY.	UNIT	PRICE	TOTAL
1	CONCRETE	100	CU YD	1.20	120.00
2	REINFORCING BARS	100	LB	0.05	5.00
3	FORMWORK	100	SQ YD	0.10	10.00
4	BRICK	100	1000'S	0.15	15.00
5	CEMENT	100	BA	0.02	2.00
6	IRON	100	LB	0.01	1.00
7	PAINT	100	GA	0.05	5.00
8	GLASS	100	SQ FT	0.02	2.00
9	WATER	100	CU YD	0.01	1.00
10	LABOR	100	HRS	0.05	5.00
11	TRUCK	100	HR	0.02	2.00
12	SALES TAX	100	PERCENT	0.01	1.00
13	PROFIT	100	PERCENT	0.01	1.00
14	PERMITS	100	PERCENT	0.01	1.00
15	INSURANCE	100	PERCENT	0.01	1.00
16	TESTING	100	PERCENT	0.01	1.00
17	CONCRETE	100	CU YD	1.20	120.00
18	REINFORCING BARS	100	LB	0.05	5.00
19	FORMWORK	100	SQ YD	0.10	10.00
20	BRICK	100	1000'S	0.15	15.00
21	CEMENT	100	BA	0.02	2.00
22	IRON	100	LB	0.01	1.00
23	PAINT	100	GA	0.05	5.00
24	GLASS	100	SQ FT	0.02	2.00
25	WATER	100	CU YD	0.01	1.00
26	LABOR	100	HRS	0.05	5.00
27	TRUCK	100	HR	0.02	2.00
28	SALES TAX	100	PERCENT	0.01	1.00
29	PROFIT	100	PERCENT	0.01	1.00
30	PERMITS	100	PERCENT	0.01	1.00
31	INSURANCE	100	PERCENT	0.01	1.00
32	TESTING	100	PERCENT	0.01	1.00



PLAN OF CONCRETE BERT BERTHO
(This is a plan view of the structure shown in the cross-sections.)

PROJECT NO. B 2 3A
S. LEXINGTON COUNTY
STATION 275 +00.0

STATE OF NORTH CAROLINA
BY: [Signature]
PUBLIC WORKS COMMISSION
FRED BERTHO (Seal)
MEMBER

BAR CODE
All dimensions are in feet and inches.

SECTION A-A

SECTION B-B

SECTION C-C

SECTION D-D

SECTION E-E

W. W. WILSON
SHERMAN ENGINEERING CO. INC.
100 S. W. 11th St. Tallahassee, Fla.

SECTION
CROSS SECTION



BAR TYPES

ALL DIMENSIONS ARE IN FEET AND INCHES

PROJECT NO. B-238

STATE OF NORTH CAROLINA
COUNTY

STATION

STATE OF NORTH CAROLINA PUBLIC WORKS COMMISSION
END BENT NO. 1 NO. 2
MARCH, 1957

SECTION 10-B

REQUIRED

FOR ONE PER CENT

NO.	DATE	ITEM	QUANTITY	UNIT PRICE	TOTAL
1	1/15
2	1/22
3	1/29
4	2/5
5	2/12
6	2/19
7	2/26
8	3/5
9	3/12
10	3/19
11	3/26
12	4/2
13	4/9
14	4/16
15	4/23
16	4/30
17	5/7
18	5/14
19	5/21
20	5/28
21	6/4
22	6/11
23	6/18
24	6/25
25	7/2
26	7/9
27	7/16
28	7/23
29	7/30
30	8/6
31	8/13
32	8/20
33	8/27
34	9/3
35	9/10
36	9/17
37	9/24
38	10/1
39	10/8
40	10/15
41	10/22
42	10/29
43	11/5
44	11/12
45	11/19
46	11/26
47	12/3
48	12/10
49	12/17
50	12/24
51	12/31

SECTION 1800 (CONT.)



MAIN BRIDGING DETAIL

PROJECT NO. 1800
CLEVELAND COUNTY

STATION: 1800+00

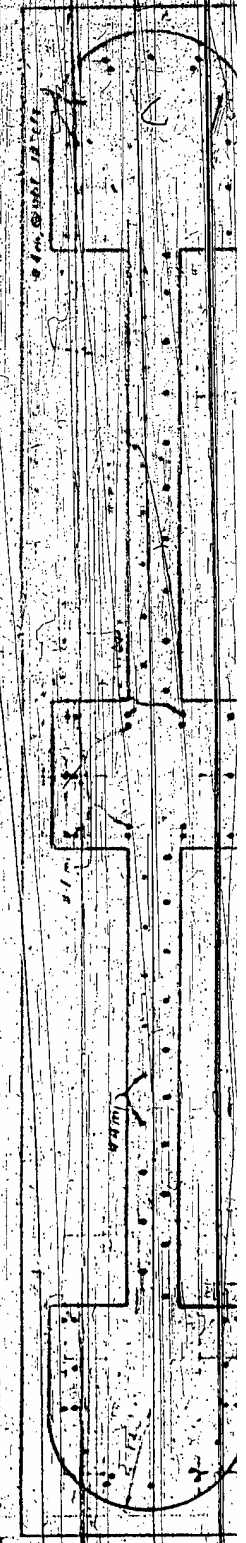
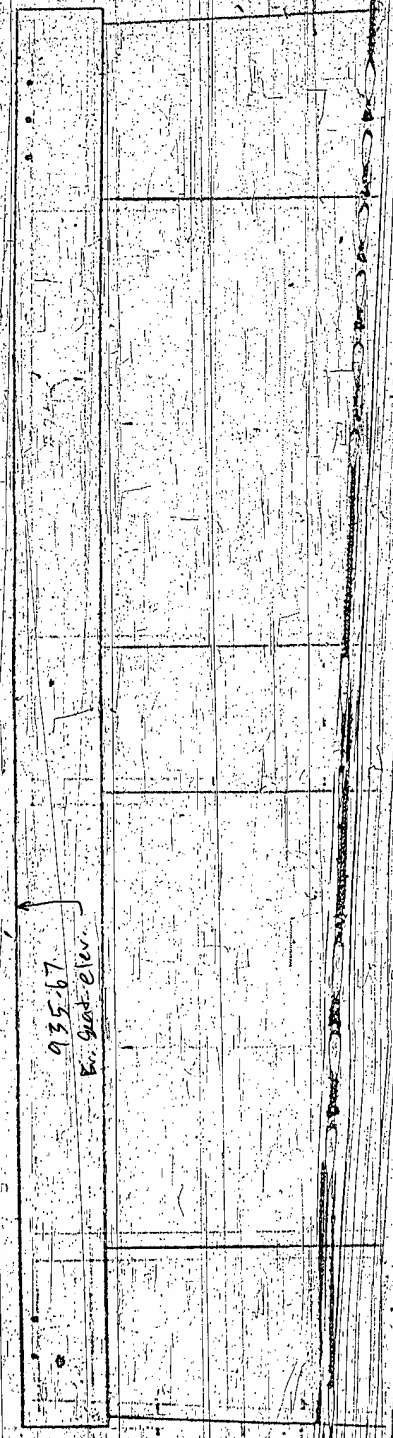
STATE OF OHIO
PUBLIC WORKS COMMISSION

1926-117

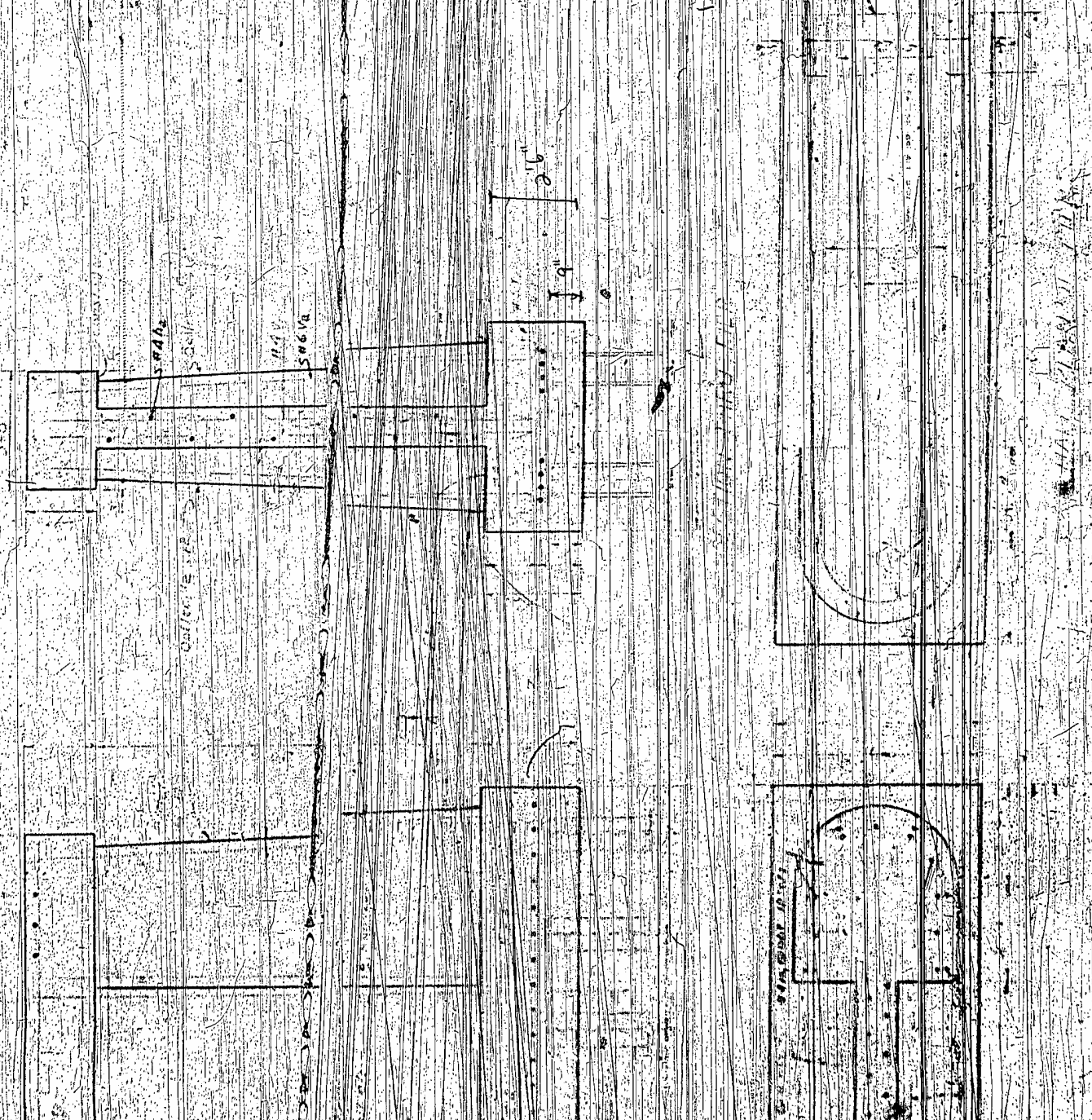
SECTION 1800

SECTION

GAFFER STREET



Sheet No. 1	Project No. 8238
City of Raleigh	State Highway 10
Division of Public Works	Station 10+00 to 10+50
Design Division	Plan No. 10-100-10
Drawn by: J. H. Smith	Checked by: J. H. Smith
Date: 10/15/57	Scale: 1" = 20'



PROJECT NO. 8238

CLAYTON COUNTY

STATION 10+00

STATE OF NORTH CAROLINA
 STATE HIGHWAY AND
 PUBLIC WORKS COMMISSION

FILE NO. 10-100-10

NOV 1957

CLEVELAND COUNTY
STATE PROJECT 8238
FEDERAL AID
1957

DETAIL SHOWING CORRECT WORDING
NAME PLATE USING FOUR LINES

DETAIL SHOWING CORRECT WORDING
NAME PLATE USING THREE LINES

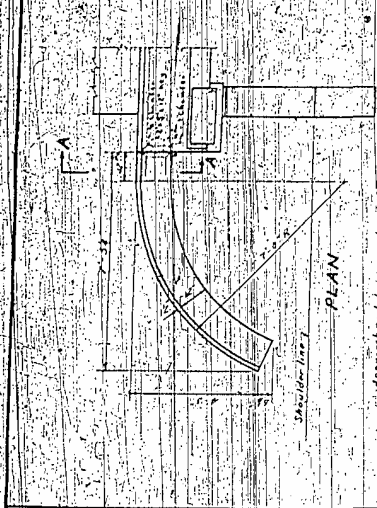
GENERAL NOTE

Kind and quality of materials for bridge work shall be as specified in the contract documents.
The name plates on the bridge shall be of a type which shall be durable and shall not be subject to rust or corrosion. The name plates shall be of a type which shall be durable and shall not be subject to rust or corrosion. The name plates shall be of a type which shall be durable and shall not be subject to rust or corrosion.



LOCATION DETAIL FOR NAME PLATE

PROJECT NO.	8238
DATE	10/15/57
BY	J. H. [unclear]
CHECKED BY	[unclear]
APPROVED BY	[unclear]

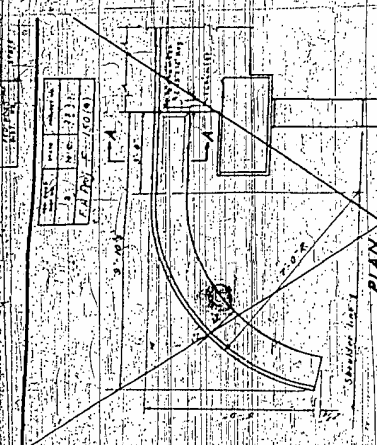


Approach curb is to be constructed on concrete base. If base of bridge curb.

BILL OF MATERIAL FOR CURBS

NO.	DESCRIPTION	QUANTITY	UNIT
1	Concrete	1.00	CU YD
2	Reinforcing Steel (No. 4)	1.00	LB
3	Formwork	1.00	SQ YD

TO BE USED WITH 12" x 6" CURBS

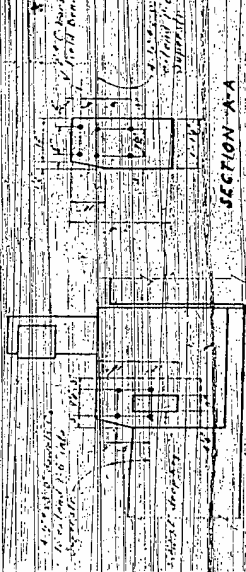


Approach curb is to be constructed on concrete base. If base of bridge curb.

BILL OF MATERIAL FOR CURBS

NO.	DESCRIPTION	QUANTITY	UNIT
1	Concrete	1.00	CU YD
2	Reinforcing Steel (No. 4)	1.00	LB
3	Formwork	1.00	SQ YD

TO BE USED WITH 2' x 6" WALKS



SECTION A-A



SECTION B-B

PROJECT NO. 8238
CLEVELAND COUNTY
STATION 375+90.5

END ELEVATION SHOWING
KEY IN SUPERSTRUCTURE

NOTE: The amount for each unit of material shall be measured and paid for as shown on the drawings. The unit price for each item shall be as shown on the drawings. The unit price for each item shall be as shown on the drawings.

NAME PLATES

STATE HIGHWAY AND PUBLIC WORKS COMMISSION

STANDARD APPROACH CURBS AND NAME PLATE

DATE: 10/15/57

BY: J. H. [unclear]

CHECKED BY: [unclear]

APPROVED BY: [unclear]

100 100 100

100 100 100

100 100 100

100 100 100

100 100 100

100 100 100

100 100 100

100 100 100

100 100 100

100 100 100

100 100 100

100 100 100

100 100 100

100 100 100

STATE HIGHWAY COMMISSION

STANDARD NOTES FOR STRUCTURES

100 100 100

EXCAVATION PIER 2 3 & 4 STA 375+00

FIG. FOR PIER NO. 2

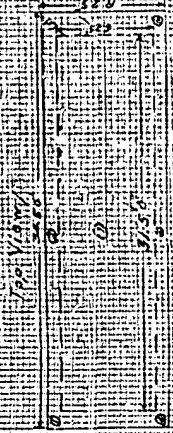
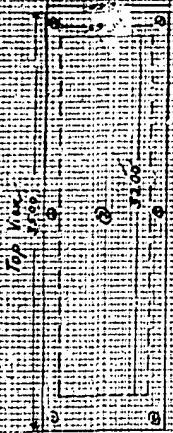


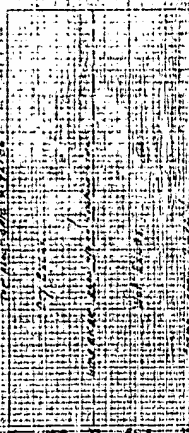
FIG. FOR PIER NO. 3



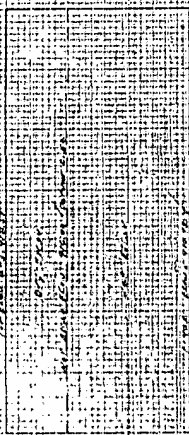
FIG. FOR PIER NO. 4



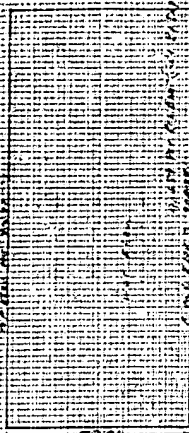
Side View



Side View



Side View



9216 7.16
 9217 7.16
 9218 7.16
 9219 7.16
 9220 7.16
 9221 7.16
 9222 7.16
 9223 7.16
 9224 7.16
 9225 7.16
 9226 7.16
 9227 7.16
 9228 7.16
 9229 7.16
 9230 7.16
 9231 7.16
 9232 7.16
 9233 7.16
 9234 7.16
 9235 7.16
 9236 7.16
 9237 7.16
 9238 7.16
 9239 7.16
 9240 7.16
 9241 7.16
 9242 7.16
 9243 7.16
 9244 7.16
 9245 7.16
 9246 7.16
 9247 7.16
 9248 7.16
 9249 7.16
 9250 7.16
 9251 7.16
 9252 7.16
 9253 7.16
 9254 7.16
 9255 7.16
 9256 7.16
 9257 7.16
 9258 7.16
 9259 7.16
 9260 7.16
 9261 7.16
 9262 7.16
 9263 7.16
 9264 7.16
 9265 7.16
 9266 7.16
 9267 7.16
 9268 7.16
 9269 7.16
 9270 7.16
 9271 7.16
 9272 7.16
 9273 7.16
 9274 7.16
 9275 7.16
 9276 7.16
 9277 7.16
 9278 7.16
 9279 7.16
 9280 7.16
 9281 7.16
 9282 7.16
 9283 7.16
 9284 7.16
 9285 7.16
 9286 7.16
 9287 7.16
 9288 7.16
 9289 7.16
 9290 7.16
 9291 7.16
 9292 7.16
 9293 7.16
 9294 7.16
 9295 7.16
 9296 7.16
 9297 7.16
 9298 7.16
 9299 7.16
 9300 7.16

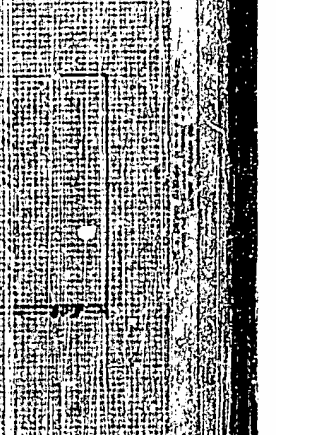
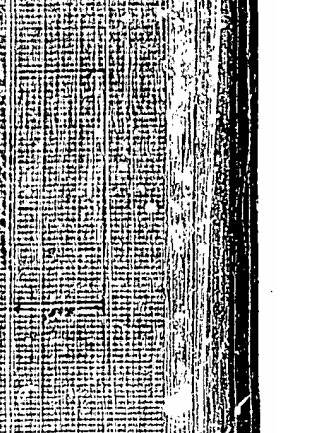
9116 7.16
 9117 7.16
 9118 7.16
 9119 7.16
 9120 7.16
 9121 7.16
 9122 7.16
 9123 7.16
 9124 7.16
 9125 7.16
 9126 7.16
 9127 7.16
 9128 7.16
 9129 7.16
 9130 7.16
 9131 7.16
 9132 7.16
 9133 7.16
 9134 7.16
 9135 7.16
 9136 7.16
 9137 7.16
 9138 7.16
 9139 7.16
 9140 7.16
 9141 7.16
 9142 7.16
 9143 7.16
 9144 7.16
 9145 7.16
 9146 7.16
 9147 7.16
 9148 7.16
 9149 7.16
 9150 7.16
 9151 7.16
 9152 7.16
 9153 7.16
 9154 7.16
 9155 7.16
 9156 7.16
 9157 7.16
 9158 7.16
 9159 7.16
 9160 7.16
 9161 7.16
 9162 7.16
 9163 7.16
 9164 7.16
 9165 7.16
 9166 7.16
 9167 7.16
 9168 7.16
 9169 7.16
 9170 7.16
 9171 7.16
 9172 7.16
 9173 7.16
 9174 7.16
 9175 7.16
 9176 7.16
 9177 7.16
 9178 7.16
 9179 7.16
 9180 7.16
 9181 7.16
 9182 7.16
 9183 7.16
 9184 7.16
 9185 7.16
 9186 7.16
 9187 7.16
 9188 7.16
 9189 7.16
 9190 7.16
 9191 7.16
 9192 7.16
 9193 7.16
 9194 7.16
 9195 7.16
 9196 7.16
 9197 7.16
 9198 7.16
 9199 7.16
 9200 7.16

9016 7.16
 9017 7.16
 9018 7.16
 9019 7.16
 9020 7.16
 9021 7.16
 9022 7.16
 9023 7.16
 9024 7.16
 9025 7.16
 9026 7.16
 9027 7.16
 9028 7.16
 9029 7.16
 9030 7.16
 9031 7.16
 9032 7.16
 9033 7.16
 9034 7.16
 9035 7.16
 9036 7.16
 9037 7.16
 9038 7.16
 9039 7.16
 9040 7.16
 9041 7.16
 9042 7.16
 9043 7.16
 9044 7.16
 9045 7.16
 9046 7.16
 9047 7.16
 9048 7.16
 9049 7.16
 9050 7.16
 9051 7.16
 9052 7.16
 9053 7.16
 9054 7.16
 9055 7.16
 9056 7.16
 9057 7.16
 9058 7.16
 9059 7.16
 9060 7.16
 9061 7.16
 9062 7.16
 9063 7.16
 9064 7.16
 9065 7.16
 9066 7.16
 9067 7.16
 9068 7.16
 9069 7.16
 9070 7.16
 9071 7.16
 9072 7.16
 9073 7.16
 9074 7.16
 9075 7.16
 9076 7.16
 9077 7.16
 9078 7.16
 9079 7.16
 9080 7.16
 9081 7.16
 9082 7.16
 9083 7.16
 9084 7.16
 9085 7.16
 9086 7.16
 9087 7.16
 9088 7.16
 9089 7.16
 9090 7.16
 9091 7.16
 9092 7.16
 9093 7.16
 9094 7.16
 9095 7.16
 9096 7.16
 9097 7.16
 9098 7.16
 9099 7.16
 9100 7.16

COMPUTATIONS PIER NO. 2
 PIER NO. 201 X 25.00 X 10.00 = 50.00
 PIER NO. 301 X 25.00 X 10.00 = 75.00
 PIER NO. 401 X 25.00 X 10.00 = 100.00
 PIER NO. 501 X 25.00 X 10.00 = 125.00
 PIER NO. 601 X 25.00 X 10.00 = 150.00
 PIER NO. 701 X 25.00 X 10.00 = 175.00
 PIER NO. 801 X 25.00 X 10.00 = 200.00
 PIER NO. 901 X 25.00 X 10.00 = 225.00
 PIER NO. 1001 X 25.00 X 10.00 = 250.00
 PIER NO. 1101 X 25.00 X 10.00 = 275.00
 PIER NO. 1201 X 25.00 X 10.00 = 300.00
 PIER NO. 1301 X 25.00 X 10.00 = 325.00
 PIER NO. 1401 X 25.00 X 10.00 = 350.00
 PIER NO. 1501 X 25.00 X 10.00 = 375.00
 PIER NO. 1601 X 25.00 X 10.00 = 400.00
 PIER NO. 1701 X 25.00 X 10.00 = 425.00
 PIER NO. 1801 X 25.00 X 10.00 = 450.00
 PIER NO. 1901 X 25.00 X 10.00 = 475.00
 PIER NO. 2001 X 25.00 X 10.00 = 500.00

COMPUTATIONS PIER NO. 3
 PIER NO. 301 X 25.00 X 10.00 = 75.00
 PIER NO. 401 X 25.00 X 10.00 = 100.00
 PIER NO. 501 X 25.00 X 10.00 = 125.00
 PIER NO. 601 X 25.00 X 10.00 = 150.00
 PIER NO. 701 X 25.00 X 10.00 = 175.00
 PIER NO. 801 X 25.00 X 10.00 = 200.00
 PIER NO. 901 X 25.00 X 10.00 = 225.00
 PIER NO. 1001 X 25.00 X 10.00 = 250.00
 PIER NO. 1101 X 25.00 X 10.00 = 275.00
 PIER NO. 1201 X 25.00 X 10.00 = 300.00
 PIER NO. 1301 X 25.00 X 10.00 = 325.00
 PIER NO. 1401 X 25.00 X 10.00 = 350.00
 PIER NO. 1501 X 25.00 X 10.00 = 375.00
 PIER NO. 1601 X 25.00 X 10.00 = 400.00
 PIER NO. 1701 X 25.00 X 10.00 = 425.00
 PIER NO. 1801 X 25.00 X 10.00 = 450.00
 PIER NO. 1901 X 25.00 X 10.00 = 475.00
 PIER NO. 2001 X 25.00 X 10.00 = 500.00

COMPUTATIONS PIER NO. 4
 PIER NO. 401 X 25.00 X 10.00 = 100.00
 PIER NO. 501 X 25.00 X 10.00 = 125.00
 PIER NO. 601 X 25.00 X 10.00 = 150.00
 PIER NO. 701 X 25.00 X 10.00 = 175.00
 PIER NO. 801 X 25.00 X 10.00 = 200.00
 PIER NO. 901 X 25.00 X 10.00 = 225.00
 PIER NO. 1001 X 25.00 X 10.00 = 250.00
 PIER NO. 1101 X 25.00 X 10.00 = 275.00
 PIER NO. 1201 X 25.00 X 10.00 = 300.00
 PIER NO. 1301 X 25.00 X 10.00 = 325.00
 PIER NO. 1401 X 25.00 X 10.00 = 350.00
 PIER NO. 1501 X 25.00 X 10.00 = 375.00
 PIER NO. 1601 X 25.00 X 10.00 = 400.00
 PIER NO. 1701 X 25.00 X 10.00 = 425.00
 PIER NO. 1801 X 25.00 X 10.00 = 450.00
 PIER NO. 1901 X 25.00 X 10.00 = 475.00
 PIER NO. 2001 X 25.00 X 10.00 = 500.00



EXCAVATION PIERS OF STR 375490'S

FIG. FOR PIER NO. 5



Side View
to show height

DIFF. IN
WELL EXCAVATION

WELL EXCAVATION

WELL EXCAVATION

- Q 92160 2200
- Q 92190 2200
- Q 92160 2200
- Q 92190 2200

COMPUTATIONS

WELL EXCAVATION

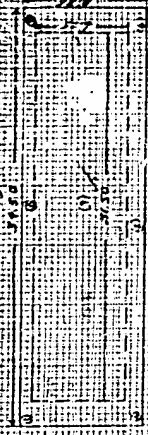
WELL EXCAVATION

WELL EXCAVATION

WELL EXCAVATION

WELL EXCAVATION

FIG. FOR PIER NO. 4



Side View
to show height

DIFF. IN
WELL EXCAVATION

WELL EXCAVATION

WELL EXCAVATION

- Q 92165 2200
- Q 92190 2200
- Q 92165 2200
- Q 92190 2200

COMPUTATIONS

WELL EXCAVATION

WELL EXCAVATION

WELL EXCAVATION

WELL EXCAVATION

WELL EXCAVATION

WELL EXCAVATION

WELL EXCAVATION

CLASS 'H' CONCRETE PIER 'A' BRIDGE 57A 3151703

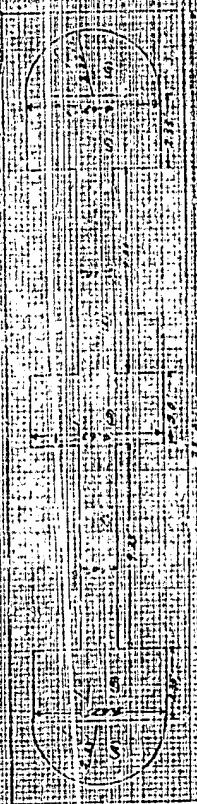
Side View



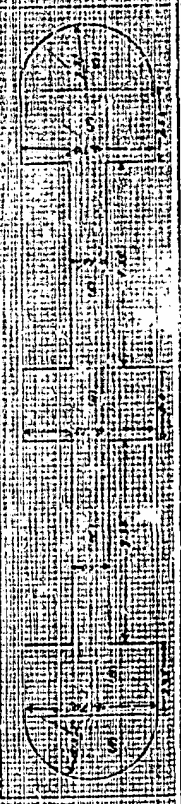
FOR DIM. 11.11702
SEE DIM. 11.11702

11.07

TOP



MIDSECTION



SUMMARY OF PIER 'A'
CONCRETE PILING QUANTITY TABLE
CONCRETE PILING QUANTITY TABLE
CONCRETE PILING QUANTITY TABLE
CONCRETE PILING QUANTITY TABLE
CONCRETE PILING QUANTITY TABLE

BOTTOM



COMPARISONS CONCRETE PIER 'A'

ITEM	DESCRIPTION	QUANTITY	UNIT	PRICE	TOTAL
1	CONCRETE PILING	17,055	CU YD		21,762
2	CONCRETE PILING	10,460	CU YD		14,600
3	CONCRETE PILING	14,010	CU YD		19,614
4	CONCRETE PILING	21,987	CU YD		30,786
5	CONCRETE PILING	17,696	CU YD		24,754
6	CONCRETE PILING	22,088	CU YD		30,919
7	CONCRETE PILING	10,460	CU YD		14,600
8	CONCRETE PILING	14,010	CU YD		19,614
9	CONCRETE PILING	21,987	CU YD		30,786
10	CONCRETE PILING	17,696	CU YD		24,754
11	CONCRETE PILING	22,088	CU YD		30,919
12	CONCRETE PILING	10,460	CU YD		14,600
13	CONCRETE PILING	14,010	CU YD		19,614
14	CONCRETE PILING	21,987	CU YD		30,786
15	CONCRETE PILING	17,696	CU YD		24,754
16	CONCRETE PILING	22,088	CU YD		30,919
17	CONCRETE PILING	10,460	CU YD		14,600
18	CONCRETE PILING	14,010	CU YD		19,614
19	CONCRETE PILING	21,987	CU YD		30,786
20	CONCRETE PILING	17,696	CU YD		24,754
21	CONCRETE PILING	22,088	CU YD		30,919
22	CONCRETE PILING	10,460	CU YD		14,600
23	CONCRETE PILING	14,010	CU YD		19,614
24	CONCRETE PILING	21,987	CU YD		30,786
25	CONCRETE PILING	17,696	CU YD		24,754
26	CONCRETE PILING	22,088	CU YD		30,919
27	CONCRETE PILING	10,460	CU YD		14,600
28	CONCRETE PILING	14,010	CU YD		19,614
29	CONCRETE PILING	21,987	CU YD		30,786
30	CONCRETE PILING	17,696	CU YD		24,754
31	CONCRETE PILING	22,088	CU YD		30,919
32	CONCRETE PILING	10,460	CU YD		14,600
33	CONCRETE PILING	14,010	CU YD		19,614
34	CONCRETE PILING	21,987	CU YD		30,786
35	CONCRETE PILING	17,696	CU YD		24,754
36	CONCRETE PILING	22,088	CU YD		30,919
37	CONCRETE PILING	10,460	CU YD		14,600
38	CONCRETE PILING	14,010	CU YD		19,614
39	CONCRETE PILING	21,987	CU YD		30,786
40	CONCRETE PILING	17,696	CU YD		24,754
41	CONCRETE PILING	22,088	CU YD		30,919
42	CONCRETE PILING	10,460	CU YD		14,600
43	CONCRETE PILING	14,010	CU YD		19,614
44	CONCRETE PILING	21,987	CU YD		30,786
45	CONCRETE PILING	17,696	CU YD		24,754
46	CONCRETE PILING	22,088	CU YD		30,919
47	CONCRETE PILING	10,460	CU YD		14,600
48	CONCRETE PILING	14,010	CU YD		19,614
49	CONCRETE PILING	21,987	CU YD		30,786
50	CONCRETE PILING	17,696	CU YD		24,754
51	CONCRETE PILING	22,088	CU YD		30,919
52	CONCRETE PILING	10,460	CU YD		14,600
53	CONCRETE PILING	14,010	CU YD		19,614
54	CONCRETE PILING	21,987	CU YD		30,786
55	CONCRETE PILING	17,696	CU YD		24,754
56	CONCRETE PILING	22,088	CU YD		30,919
57	CONCRETE PILING	10,460	CU YD		14,600
58	CONCRETE PILING	14,010	CU YD		19,614
59	CONCRETE PILING	21,987	CU YD		30,786
60	CONCRETE PILING	17,696	CU YD		24,754
61	CONCRETE PILING	22,088	CU YD		30,919
62	CONCRETE PILING	10,460	CU YD		14,600
63	CONCRETE PILING	14,010	CU YD		19,614
64	CONCRETE PILING	21,987	CU YD		30,786
65	CONCRETE PILING	17,696	CU YD		24,754
66	CONCRETE PILING	22,088	CU YD		30,919
67	CONCRETE PILING	10,460	CU YD		14,600
68	CONCRETE PILING	14,010	CU YD		19,614
69	CONCRETE PILING	21,987	CU YD		30,786
70	CONCRETE PILING	17,696	CU YD		24,754
71	CONCRETE PILING	22,088	CU YD		30,919
72	CONCRETE PILING	10,460	CU YD		14,600
73	CONCRETE PILING	14,010	CU YD		19,614
74	CONCRETE PILING	21,987	CU YD		30,786
75	CONCRETE PILING	17,696	CU YD		24,754
76	CONCRETE PILING	22,088	CU YD		30,919
77	CONCRETE PILING	10,460	CU YD		14,600
78	CONCRETE PILING	14,010	CU YD		19,614
79	CONCRETE PILING	21,987	CU YD		30,786
80	CONCRETE PILING	17,696	CU YD		24,754
81	CONCRETE PILING	22,088	CU YD		30,919
82	CONCRETE PILING	10,460	CU YD		14,600
83	CONCRETE PILING	14,010	CU YD		19,614
84	CONCRETE PILING	21,987	CU YD		30,786
85	CONCRETE PILING	17,696	CU YD		24,754
86	CONCRETE PILING	22,088	CU YD		30,919
87	CONCRETE PILING	10,460	CU YD		14,600
88	CONCRETE PILING	14,010	CU YD		19,614
89	CONCRETE PILING	21,987	CU YD		30,786
90	CONCRETE PILING	17,696	CU YD		24,754
91	CONCRETE PILING	22,088	CU YD		30,919
92	CONCRETE PILING	10,460	CU YD		14,600
93	CONCRETE PILING	14,010	CU YD		19,614
94	CONCRETE PILING	21,987	CU YD		30,786
95	CONCRETE PILING	17,696	CU YD		24,754
96	CONCRETE PILING	22,088	CU YD		30,919
97	CONCRETE PILING	10,460	CU YD		14,600
98	CONCRETE PILING	14,010	CU YD		19,614
99	CONCRETE PILING	21,987	CU YD		30,786
100	CONCRETE PILING	17,696	CU YD		24,754

MIDSECTION OF PIER 'A'
CONCRETE PILING QUANTITY TABLE
CONCRETE PILING QUANTITY TABLE
CONCRETE PILING QUANTITY TABLE
CONCRETE PILING QUANTITY TABLE

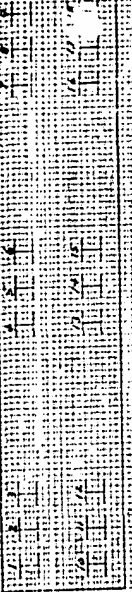
CONCRETE PILING QUANTITY TABLE
CONCRETE PILING QUANTITY TABLE
CONCRETE PILING QUANTITY TABLE
CONCRETE PILING QUANTITY TABLE
CONCRETE PILING QUANTITY TABLE

PILE DATA

BRIDGE AT STA. 375+90.5

EXPONENT NO. 2

PIER NO. 2



12 @ 33" STEEL H. PILES RETAINED IN PLACE = 173.83 LIN. FT. SEE EST. NO. 2
 12 @ 33" STEEL H. PILES CUT OFF = 50.67 LIN. FT.
 LESS FOR CAPS = 4.50 LIN. FT.
 PAY CUT OFF 12 @ 33" STEEL H. PILES = 96.77 LIN. FT. SEE EST. NO. 2

10 @ 42" STEEL H. PILES RETAINED IN PLACE = 277.00 LIN. FT. SEE EST. NO. 4
 10 @ 42" STEEL H. PILES CUT OFF = 100.00 LIN. FT.
 LESS FOR CAPS = 10.00 LIN. FT.
 PAY CUT OFF 10 @ 42" STEEL H. PILES = 157.00 LIN. FT. SEE EST. NO. 4

NOTE:
 RECORD OF INDIVIDUAL PILES BURNED ON DEC. 12, 1957
 WHEN FIELD OFFICE WAS DESTROYED BY FIRE. HOWEVER
 THE PILES FOR EACH BENT AND PIER HAD BEEN COMPUTED
 IN MISCELLANEOUS WHICH WERE DESTROYED BY THE FIRE
 AND THESE PILES WERE NOT RECORDED. THEREFORE THE TOTALS
 SHOWN ON THIS SHEET ARE ALL THAT ARE

END BENT NO. 1

PIER NO. 3

12 @ 33" STEEL H. PILES REMAINING IN PLACE = 336.00 LIN. FT. SEE EST. NO. 2
 12 @ 33" STEEL H. PILES CUT OFF = 174.00 LIN. FT.
 LESS FOR CAPS = 4.50 LIN. FT.
 PAY CUT OFF 12 @ 33" STEEL H. PILES = 506.50 LIN. FT. SEE EST. NO. 2

10 @ 42" STEEL H. PILES RETAINED IN PLACE = 277.00 LIN. FT. SEE EST. NO. 4
 10 @ 42" STEEL H. PILES CUT OFF = 100.00 LIN. FT.
 LESS FOR CAPS = 10.00 LIN. FT.
 PAY CUT OFF 10 @ 42" STEEL H. PILES = 157.00 LIN. FT. SEE EST. NO. 4

SUMMARY

TOTAL LIN. FT. OF 12 @ 33" STEEL H. PILES RETAINED = 336.00 LIN. FT.
 TOTAL LIN. FT. OF 12 @ 33" STEEL H. PILES CUT OFF = 174.00 LIN. FT.
 TOTAL LIN. FT. OF 10 @ 42" STEEL H. PILES RETAINED = 277.00 LIN. FT.
 TOTAL LIN. FT. OF 10 @ 42" STEEL H. PILES CUT OFF = 100.00 LIN. FT.

509.00 LIN. FT.
 114.76 LIN. FT.
 569.58 LIN. FT.
 45.08 LIN. FT.

SEE ESTIMATE NO. 2
 SEE ESTIMATE NO. 4
 SEE ESTIMATE NO. 4
 SEE ESTIMATE NO. 4

FINAL ESTIMATE

PROJECT NO. 618231

DATE: 11/18/68

STATION: 1+00 TO 1+50

SECTION: 1+00 TO 1+50

DATE: 11/18/68

BY: [Illegible]

FOR: [Illegible]

PROJECT: [Illegible]

SECTION: [Illegible]

DATE: [Illegible]

BY: [Illegible]

FOR: [Illegible]

PROJECT: [Illegible]

SECTION: [Illegible]

DATE: [Illegible]

BY: [Illegible]

FOR: [Illegible]

PROJECT: [Illegible]

SECTION: [Illegible]

DATE: [Illegible]

BY: [Illegible]

FOR: [Illegible]

PROJECT: [Illegible]

SECTION: [Illegible]

DATE: [Illegible]

BY: [Illegible]

FOR: [Illegible]

PROJECT: [Illegible]

SECTION: [Illegible]

STATION: 1+00 TO 1+50

SECTION: 1+00 TO 1+50

DATE: 11/18/68

BY: [Illegible]

FOR: [Illegible]

PROJECT: [Illegible]

SECTION: [Illegible]

DATE: [Illegible]

BY: [Illegible]

FOR: [Illegible]

PROJECT: [Illegible]

SECTION: [Illegible]

DATE: [Illegible]

BY: [Illegible]

FOR: [Illegible]

PROJECT: [Illegible]

SECTION: [Illegible]

DATE: [Illegible]

BY: [Illegible]

FOR: [Illegible]

PROJECT: [Illegible]

SECTION: [Illegible]

DATE: [Illegible]

BY: [Illegible]

FOR: [Illegible]

PROJECT: [Illegible]

SECTION: [Illegible]

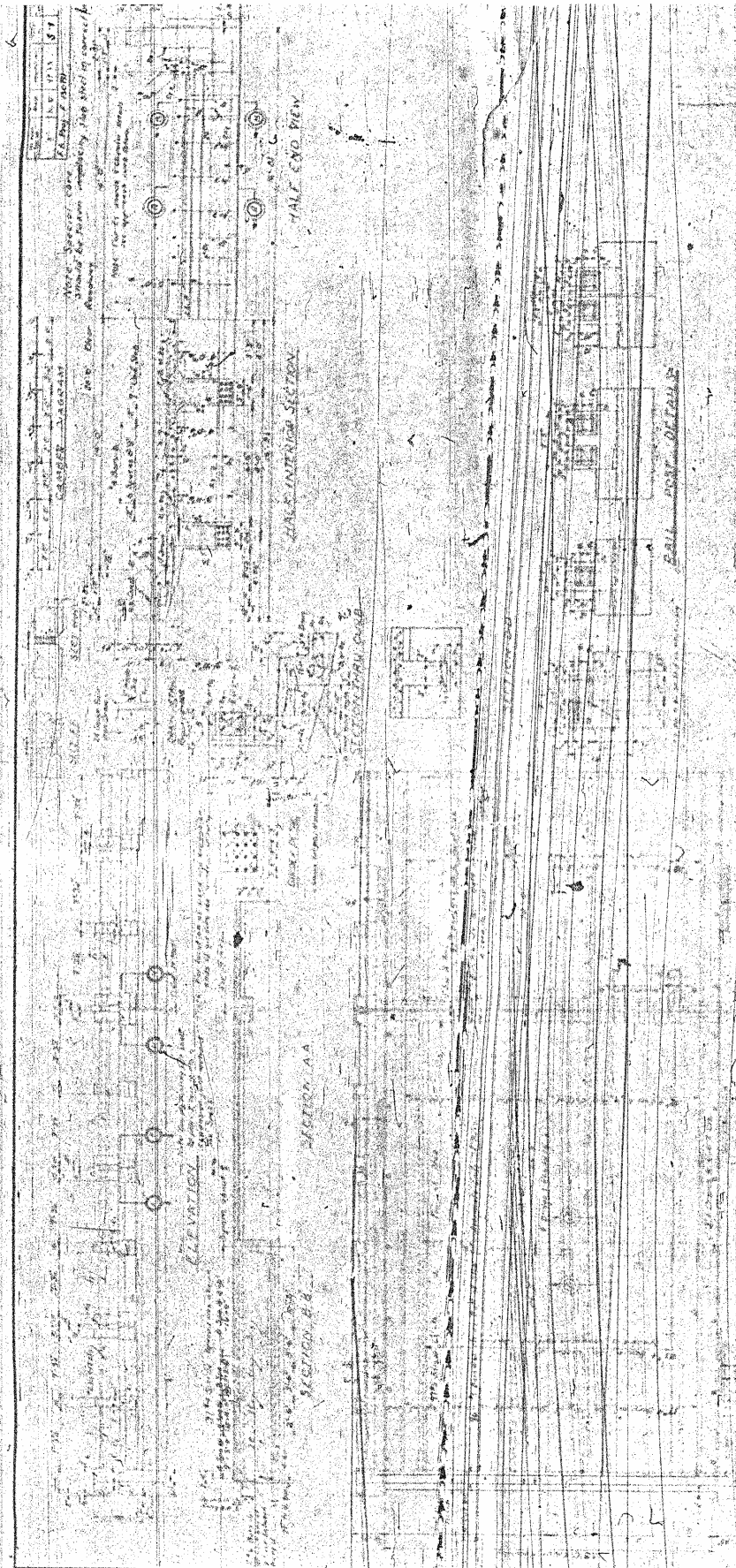


PROJECT NO. 683
 CALIFORNIA COUNTY
 STATION 1

REEL 683-Pos. 1

STATE HIGHWAY
 PUBLIC WORKS COMMISSION
 CALIFORNIA
 THE ENGINEER
 J. L. FALGOUT
 SACRAMENTO, CALIF.

APPROVED
 DATE
 BY



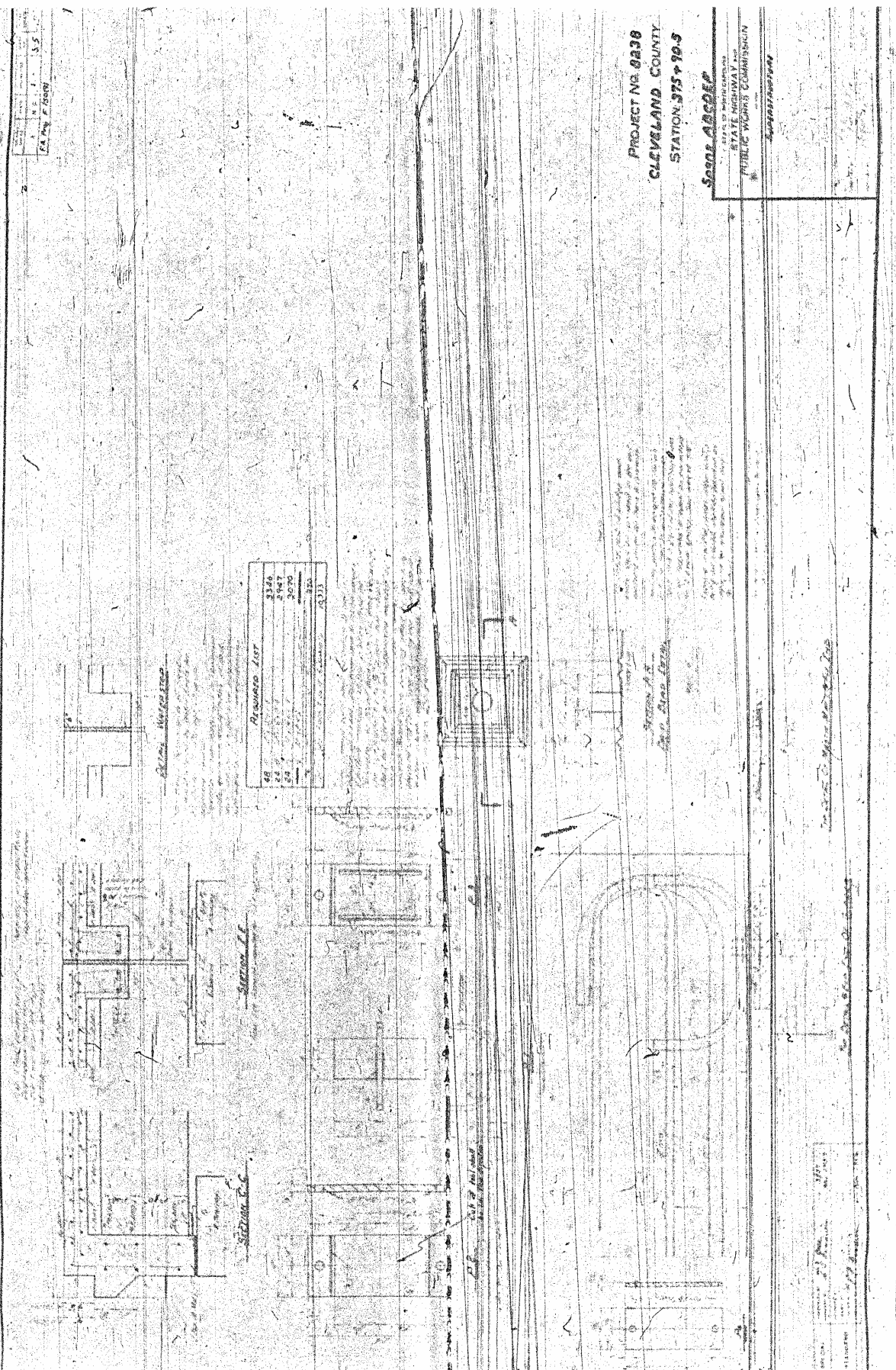
PROJECT NO. 2839
 CLEVELAND COUNTY
 STATION 375+90.67

Span ABCEFF
 STATE HIGHWAY...
 STAFFORD
 REINFORCED CONCRETE
 ARCH GIRDER
 59'-6" SPAN - 26' 0" ROADWAY
 JANUARY 1931

TABLE OF MATERIALS FOR SPANS ABCEFF

ITEM	QUANTITY	UNIT	PRICE	TOTAL
Concrete	100	cu yd	1.50	150.00
Reinforcing Steel	100	lb	0.10	10.00
Formwork	100	sq ft	0.05	5.00
Gravel	100	cu yd	0.50	50.00
Sand	100	cu yd	0.30	30.00
Paint	100	gal	0.10	10.00
Other	100	unit	0.05	5.00
Total				260.00

Notes and specifications for the bridge construction, including details on materials, workmanship, and safety.



Scale	1" = 10'
Sheet No.	35
Date	1929

Room Schedule

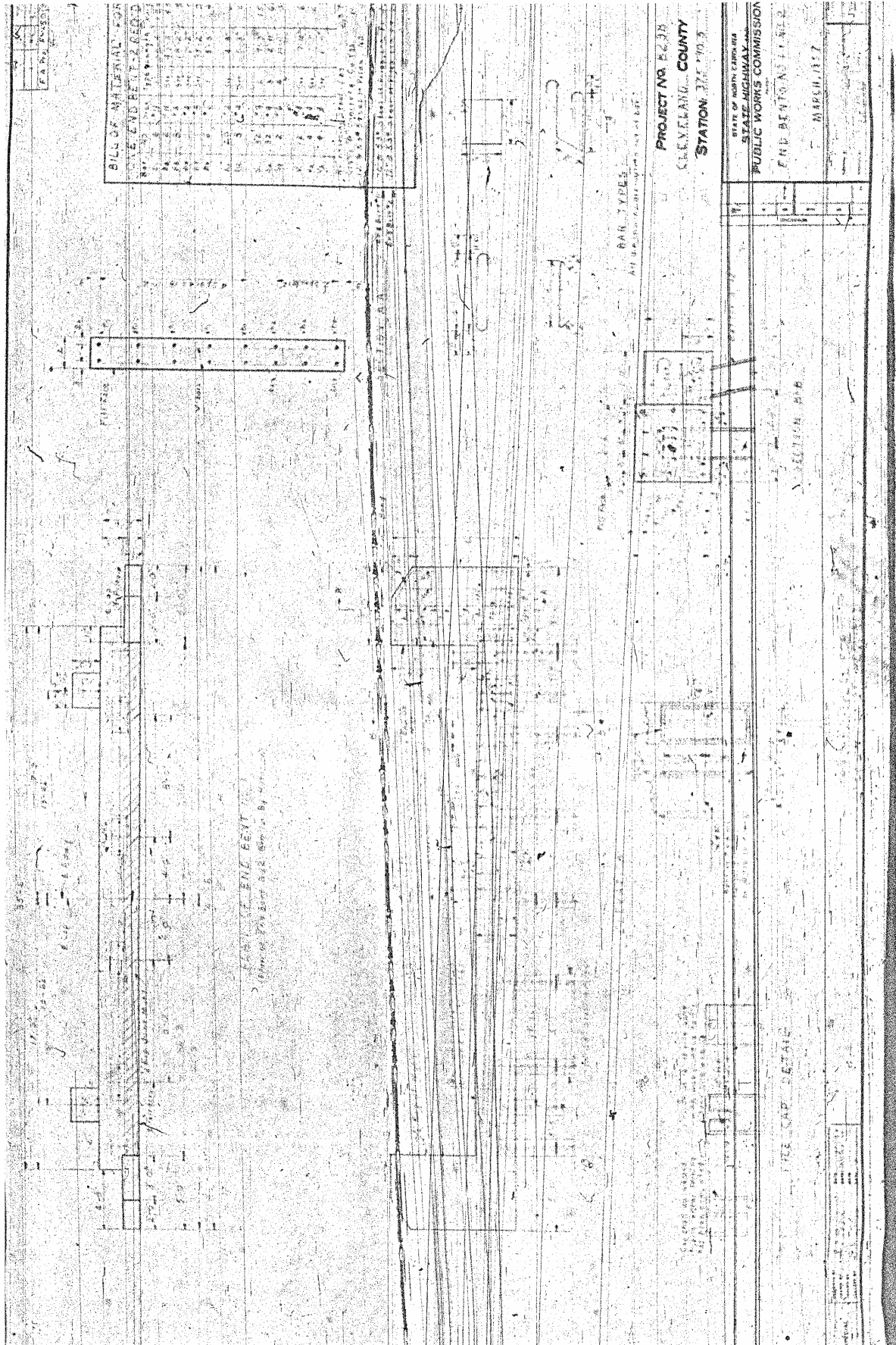
Room No.	3346
Room Name	Kitchen
Area	51.47
Volume	1029.4
Notes	See notes on page 34

PROJECT NO. 8838
 CLEVELAND COUNTY
 STATION 375 + 90.5

State Road
 STATE HIGHWAY
 PUBLIC WORKS COMMISSION

Architect
 Engineer

FA No. 10037



**BILL OF MATERIAL FOR
PILE END BENT 2-20-20**

NO.	DESCRIPTION	QUANTITY	UNIT	PRICE	TOTAL
1	PILE	100	LINEAL FEET	1.00	100.00
2	PILE	100	LINEAL FEET	1.00	100.00
3	PILE	100	LINEAL FEET	1.00	100.00
4	PILE	100	LINEAL FEET	1.00	100.00
5	PILE	100	LINEAL FEET	1.00	100.00
6	PILE	100	LINEAL FEET	1.00	100.00
7	PILE	100	LINEAL FEET	1.00	100.00
8	PILE	100	LINEAL FEET	1.00	100.00
9	PILE	100	LINEAL FEET	1.00	100.00
10	PILE	100	LINEAL FEET	1.00	100.00
11	PILE	100	LINEAL FEET	1.00	100.00
12	PILE	100	LINEAL FEET	1.00	100.00
13	PILE	100	LINEAL FEET	1.00	100.00
14	PILE	100	LINEAL FEET	1.00	100.00
15	PILE	100	LINEAL FEET	1.00	100.00
16	PILE	100	LINEAL FEET	1.00	100.00
17	PILE	100	LINEAL FEET	1.00	100.00
18	PILE	100	LINEAL FEET	1.00	100.00
19	PILE	100	LINEAL FEET	1.00	100.00
20	PILE	100	LINEAL FEET	1.00	100.00
21	PILE	100	LINEAL FEET	1.00	100.00
22	PILE	100	LINEAL FEET	1.00	100.00
23	PILE	100	LINEAL FEET	1.00	100.00
24	PILE	100	LINEAL FEET	1.00	100.00
25	PILE	100	LINEAL FEET	1.00	100.00
26	PILE	100	LINEAL FEET	1.00	100.00
27	PILE	100	LINEAL FEET	1.00	100.00
28	PILE	100	LINEAL FEET	1.00	100.00
29	PILE	100	LINEAL FEET	1.00	100.00
30	PILE	100	LINEAL FEET	1.00	100.00
31	PILE	100	LINEAL FEET	1.00	100.00
32	PILE	100	LINEAL FEET	1.00	100.00
33	PILE	100	LINEAL FEET	1.00	100.00
34	PILE	100	LINEAL FEET	1.00	100.00
35	PILE	100	LINEAL FEET	1.00	100.00
36	PILE	100	LINEAL FEET	1.00	100.00
37	PILE	100	LINEAL FEET	1.00	100.00
38	PILE	100	LINEAL FEET	1.00	100.00
39	PILE	100	LINEAL FEET	1.00	100.00
40	PILE	100	LINEAL FEET	1.00	100.00
41	PILE	100	LINEAL FEET	1.00	100.00
42	PILE	100	LINEAL FEET	1.00	100.00
43	PILE	100	LINEAL FEET	1.00	100.00
44	PILE	100	LINEAL FEET	1.00	100.00
45	PILE	100	LINEAL FEET	1.00	100.00
46	PILE	100	LINEAL FEET	1.00	100.00
47	PILE	100	LINEAL FEET	1.00	100.00
48	PILE	100	LINEAL FEET	1.00	100.00
49	PILE	100	LINEAL FEET	1.00	100.00
50	PILE	100	LINEAL FEET	1.00	100.00

5 PILE END BENT
Showing Pile Bent and Span By Bridge

BAR TYPE
All dimensions in feet and inches

PROJECT NO. 2228
CLEVELAND COUNTY
STATION 375 + 0.0

STATE OF NORTH CAROLINA
PUBLIC WORKS COMMISSION

END BENT ON LINE

MARCH 1917

PILE CAP DETAIL

CONCRETE SHALL BE 1500 POUNDS PER CUBIC FOOT
REINFORCING SHALL BE AS SHOWN
ALL DIMENSIONS IN FEET AND INCHES

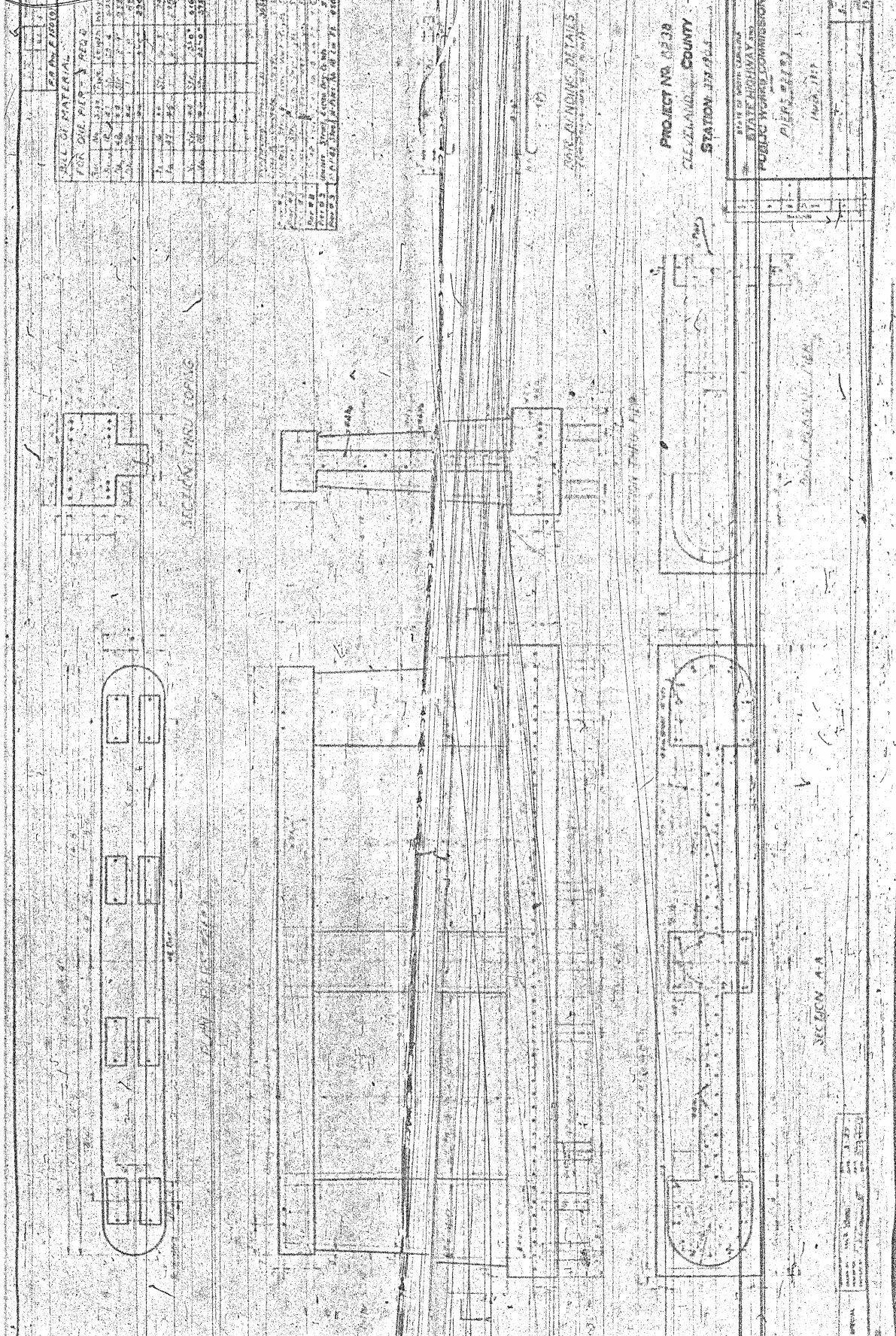


TABLE OF MATERIAL FOR ONE PIECE - REQ.

NO.	DESCRIPTION	QUANTITY	UNIT
1	Concrete	100.0	cu yd
2	Reinforcing Steel	100.0	lb
3	Formwork	100.0	sq ft
4	Gravel	100.0	cu yd
5	Sand	100.0	cu yd
6	Water	100.0	gal
7	Oil	100.0	gal
8	Paint	100.0	gal
9	Other	100.0	unit

PROJECT NO. 6238
 CLEVELAND COUNTY
 STATION 11+11.5
 STATE HIGHWAY AND
 PUBLIC WORKS COMMISSION
 PIER #1113
 11/28/11

SECTION A-A

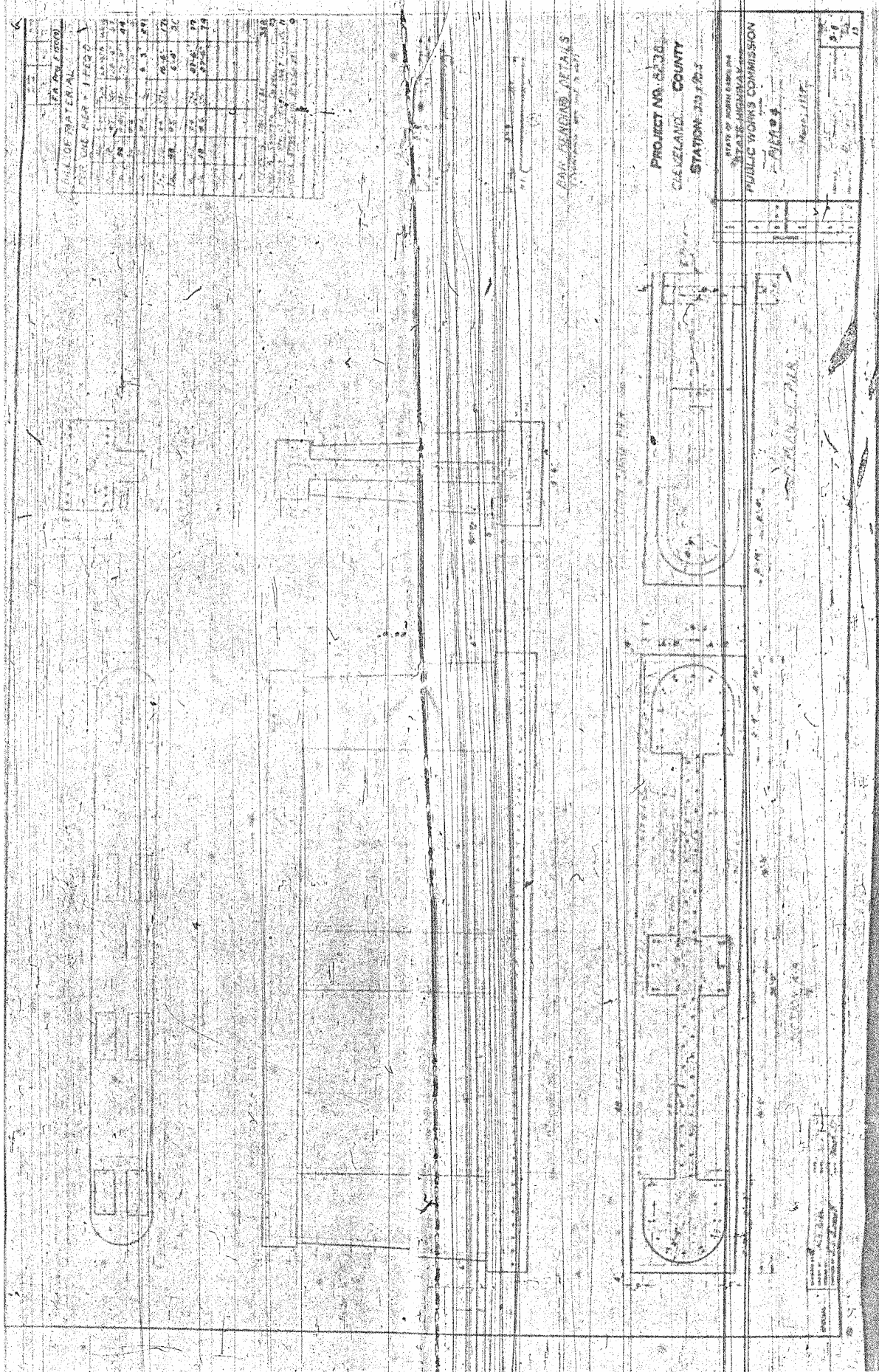


TABLE OF MATERIAL
FOR ONE M.P.R. - 17500

NO.	DESCRIPTION	QUANTITY	UNIT	PRICE	TOTAL
1	CONCRETE	100	CU YD	1.50	150.00
2	STEEL	50	TONS	100.00	5000.00
3	BRICK	200	1000'S	0.50	100.00
4	CEMENT	50	TONS	1.00	50.00
5	AGGREGATE	100	CU YD	0.50	50.00
6	PAINT	10	TONS	1.00	10.00
7	LABOR	1000	HRS	0.10	100.00
8	TRANSIT	10	TONS	1.00	10.00
9	WATER	100	CU YD	0.50	50.00
10	REINFORCING	50	TONS	100.00	5000.00
11	FORMS	100	CU YD	0.50	50.00
12	SCAFFOLDING	100	CU YD	0.50	50.00
13	TRUCKS	100	CU YD	0.50	50.00
14	CRANE	10	TONS	1.00	10.00
15	WELDER	10	TONS	1.00	10.00
16	DRILL	10	TONS	1.00	10.00
17	SHOVEL	10	TONS	1.00	10.00
18	TRUCK	10	TONS	1.00	10.00
19	CRANE	10	TONS	1.00	10.00
20	WELDER	10	TONS	1.00	10.00
21	DRILL	10	TONS	1.00	10.00
22	SHOVEL	10	TONS	1.00	10.00
23	TRUCK	10	TONS	1.00	10.00
24	CRANE	10	TONS	1.00	10.00
25	WELDER	10	TONS	1.00	10.00
26	DRILL	10	TONS	1.00	10.00
27	SHOVEL	10	TONS	1.00	10.00
28	TRUCK	10	TONS	1.00	10.00
29	CRANE	10	TONS	1.00	10.00
30	WELDER	10	TONS	1.00	10.00
31	DRILL	10	TONS	1.00	10.00
32	SHOVEL	10	TONS	1.00	10.00
33	TRUCK	10	TONS	1.00	10.00
34	CRANE	10	TONS	1.00	10.00
35	WELDER	10	TONS	1.00	10.00
36	DRILL	10	TONS	1.00	10.00
37	SHOVEL	10	TONS	1.00	10.00
38	TRUCK	10	TONS	1.00	10.00
39	CRANE	10	TONS	1.00	10.00
40	WELDER	10	TONS	1.00	10.00
41	DRILL	10	TONS	1.00	10.00
42	SHOVEL	10	TONS	1.00	10.00
43	TRUCK	10	TONS	1.00	10.00
44	CRANE	10	TONS	1.00	10.00
45	WELDER	10	TONS	1.00	10.00
46	DRILL	10	TONS	1.00	10.00
47	SHOVEL	10	TONS	1.00	10.00
48	TRUCK	10	TONS	1.00	10.00
49	CRANE	10	TONS	1.00	10.00
50	WELDER	10	TONS	1.00	10.00

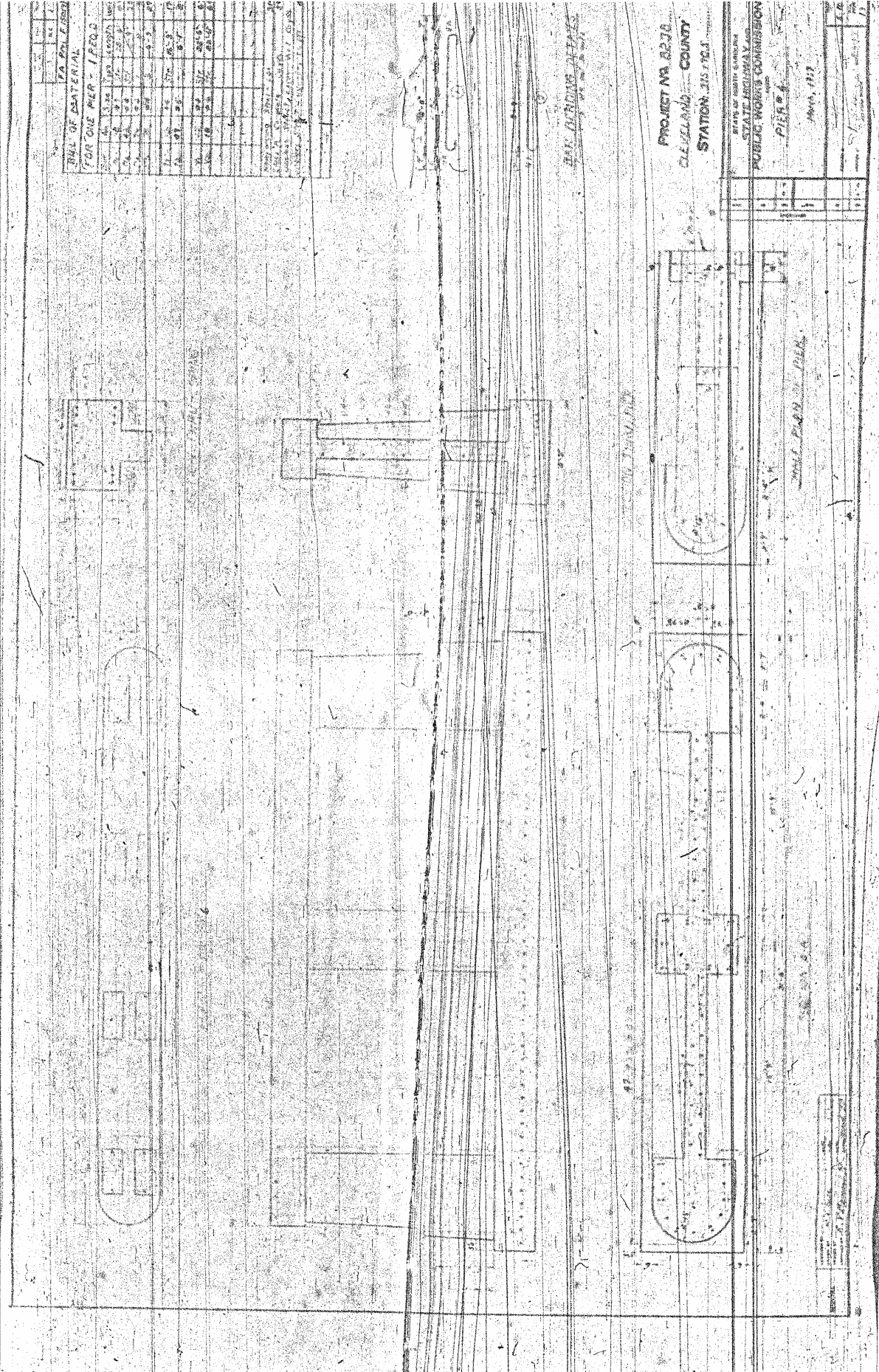
SPAN BRACING DETAILS

PROJECT NO. 5430
CLEVELAND COUNTY
STATION 20+00

STATE OF NORTH CAROLINA
PUBLIC WORKS COMMISSION
APPROVED
DATE

DATE	BY

TABLE OF MATERIAL FOR ONE PIECE / FEET		
NO.	DESCRIPTION	AMOUNT
1
2
3
4
5
6
7
8
9
10
11
12
13
14
15
16
17
18
19
20
21
22
23
24
25
26
27
28
29
30
31
32
33
34
35
36
37
38
39
40
41
42
43
44
45
46
47
48
49
50



PROJECT NO. 8270
 CLEVELAND COUNTY
 STATION 215+00

STATE OF NORTH CAROLINA
 STATE HIGHWAY DEPARTMENT
 PUBLIC WORKS COMMISSION
 PIER 4
 DATE 1917

NO.	DESCRIPTION	AMOUNT
1
2
3
4
5
6
7
8
9
10
11
12
13
14
15
16
17
18
19
20
21
22
23
24
25
26
27
28
29
30
31
32
33
34
35
36
37
38
39
40
41
42
43
44
45
46
47
48
49
50

