

NOTES

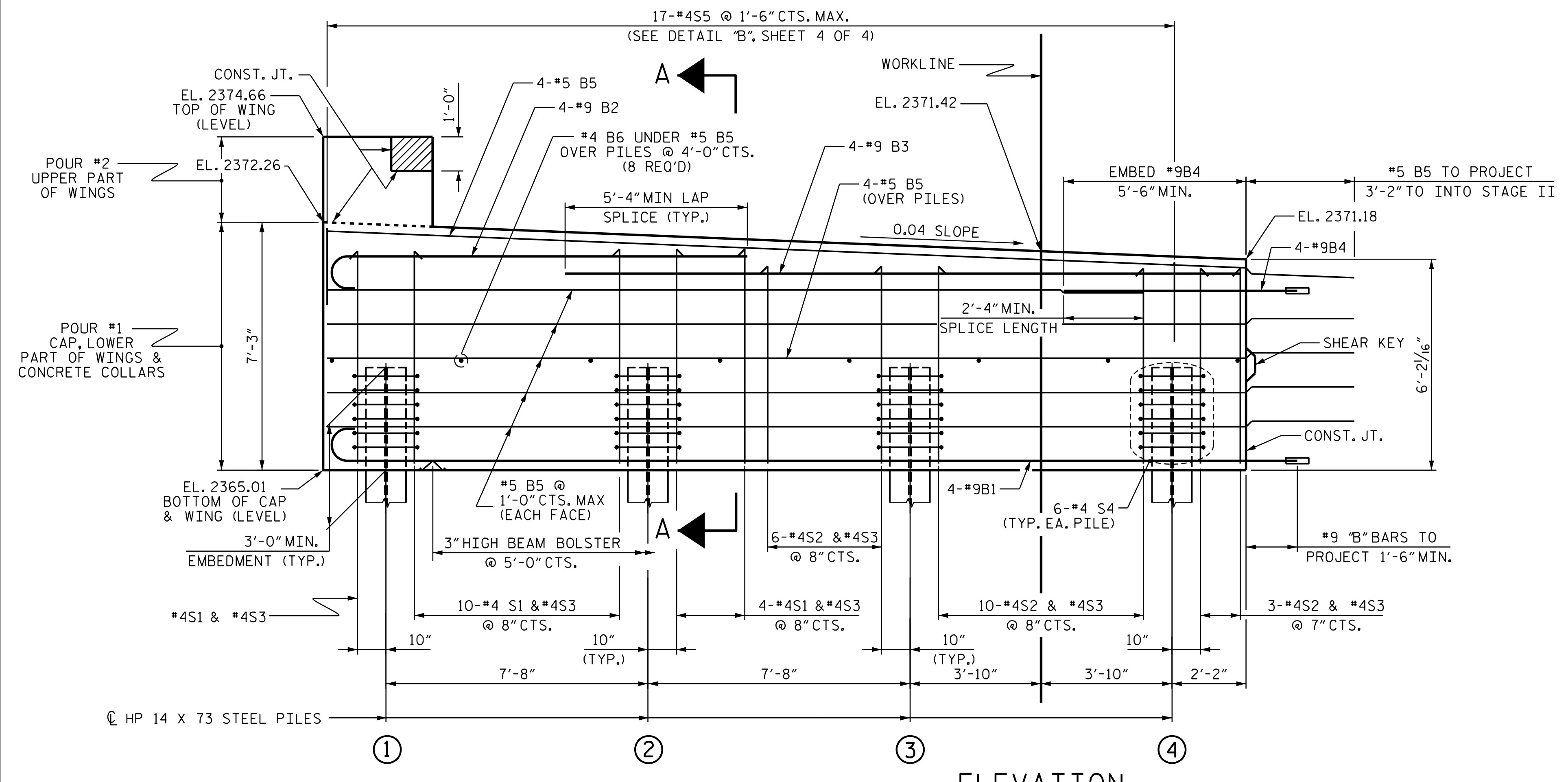
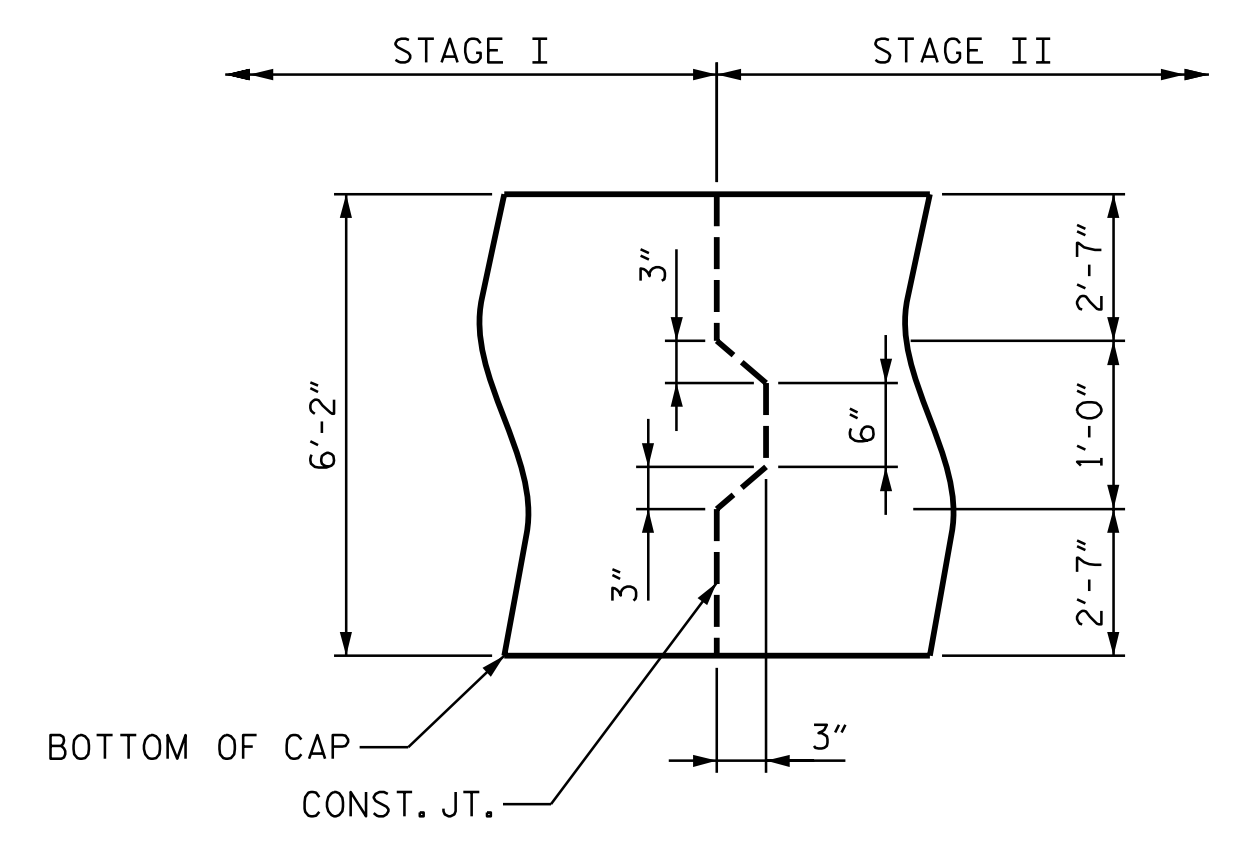
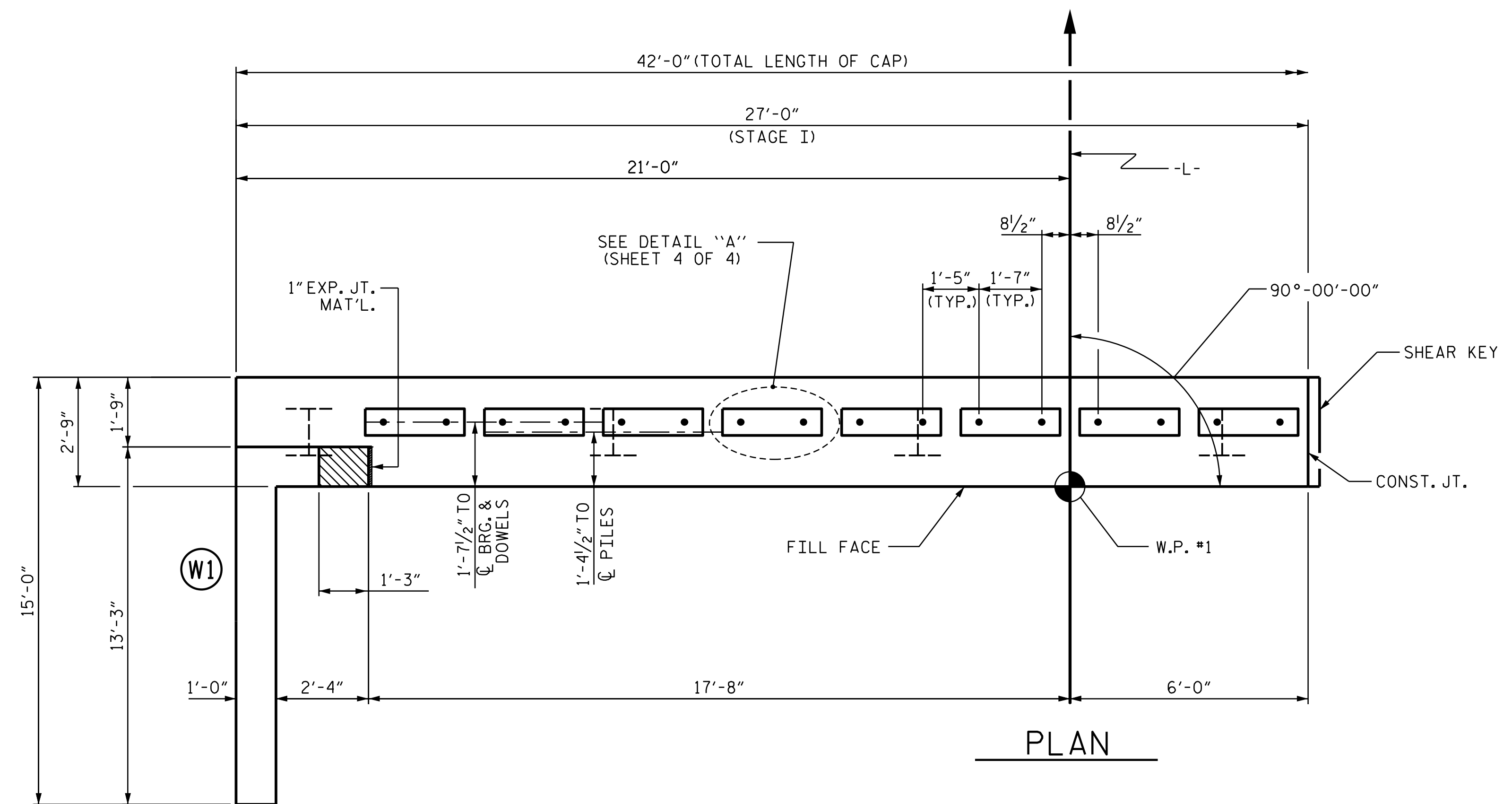
STIRRUPS IN CAP MAY BE SHIFTED AS NECESSARY TO CLEAR DOWELS.

THE CONCRETE IN THE SHADED AREA OF THE WING SHALL BE POURED AFTER THE VERTICAL CONCRETE BARRIER RAIL IS CAST IF SLIP FORMING IS USED.

MECHANICAL COUPLERS SHALL BE USED TO JOIN #9 "B" BARS IN STAGE I WITH #9 "B" BARS IN STAGE II. THE LOCATION OF THE COUPLERS SHALL BE STAGGERED ON ALTERNATING BARS BY 1 FOOT AND THE BARS SHALL BE CUT ACCORDINGLY TO ALLOW A MINIMUM OF 1'-6" EXTENSION INTO STAGE II CONSTRUCTION.

FOR PILE SPLICE DETAILS, SEE SHEET 4 OF 4.

FOR WING DETAILS, SEE SHEET 3 OF 4.



WING NOT SHOWN FOR CLARITY. FOR SECTION A-A, SEE SHEET 4 OF 4. CONCRETE COLLARS FOR STEEL PILES NOT SHOWN IN PLAN AND ELEVATION VIEWS FOR CLARITY. SEE "CORROSION PROTECTION FOR STEEL PILES DETAIL", SHEET 4 OF 4.

PROJECT NO. B-5893
MITCHELL COUNTY
 STATION: 12+89.50 -L-
 SHEET 1 OF 4

STATE OF NORTH CAROLINA
 DEPARTMENT OF TRANSPORTATION
 RALEIGH

SUBSTRUCTURE
 END BENT No. 1
 STAGE I

DOCUMENT NOT CONSIDERED FINAL UNLESS ALL SIGNATURES COMPLETED

3/24/2023

Seal of J. Wheatley, Professional Engineer, No. 036787

wsp WSP USA Inc.
 434 FAYETTEVILLE STREET
 SUITE 1500
 RALEIGH, NC 27601
 TEL: 1.919.836.4040
 LICENSE NO. F-0165

REVISIONS						SHEET NO.
NO.	BY:	DATE:	NO.	BY:	DATE:	S-14
1			3			TOTAL SHEETS 24
2			4			

3/24/2023
 J:\188906R-14 B-5893 Bridge 19 over Cub Creek\Structures\2.0 Drafting\Drawings\401.029.B5893.SMU.E101.dgn

DESIGNED BY: J. WHEATLEY DATE: MAR 2023
 DRAWN BY: J. WHEATLEY DATE: MAR 2023
 CHECKED BY: T. KIRSCHBAUM DATE: MAR 2023
 DESIGN ENGINEER: J. WHEATLEY DATE: MAR 2023
 OF RECORD: J. WHEATLEY DATE: MAR 2023