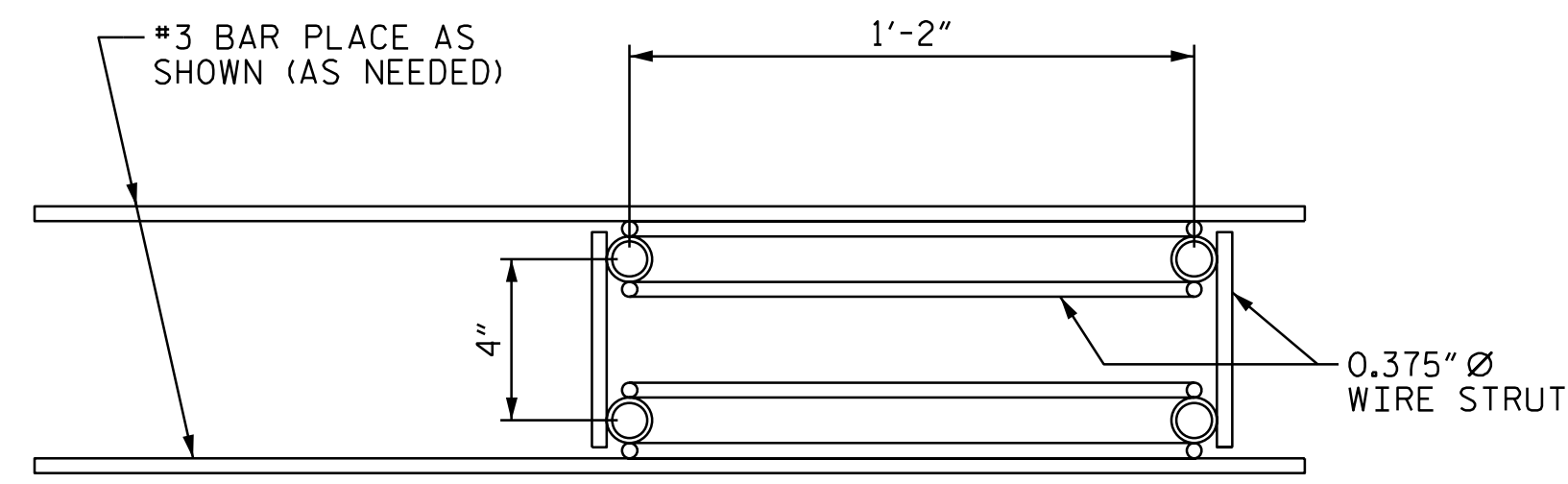
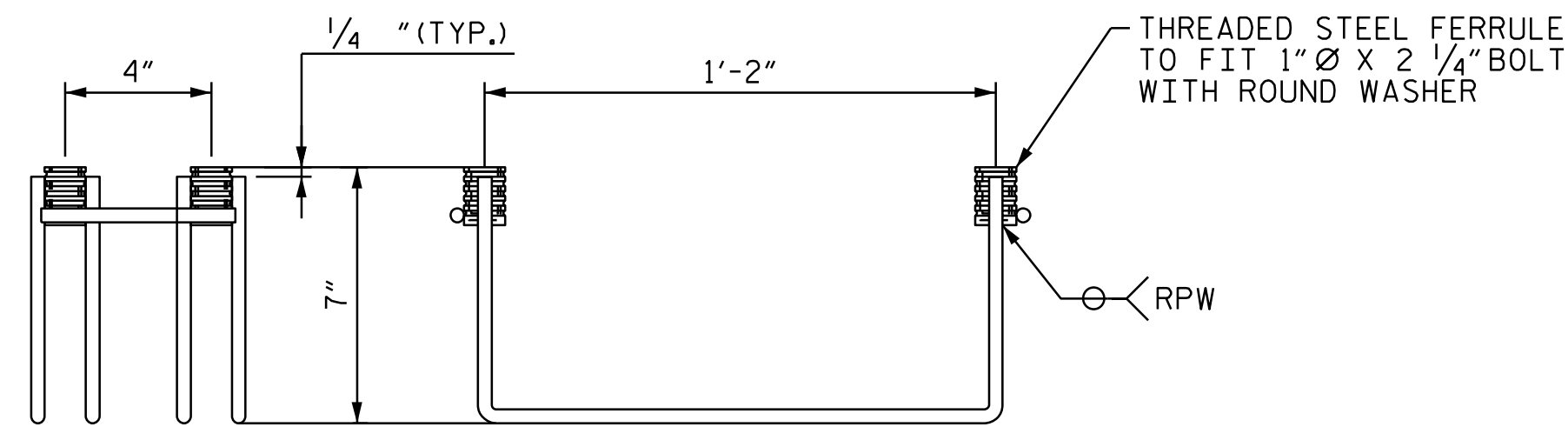


NOTES

- THE TEMPORARY GUARDRAIL ANCHOR ASSEMBLY SHALL CONSIST OF THE FOLLOWING COMPONENTS:
- A. FERRULES SHALL BE MADE FROM STEEL MEETING THE REQUIREMENTS OF ASSHTO M169, GRADE 12L14 AND SHALL HAVE A MINIMUM LENGTH OF THREADS OF 2 1/2".
  - B. 4 - 1" @ X 2 1/4" BOLTS WITH WASHERS. BOLTS SHALL CONFORM TO THE REQUIREMENTS OF ASTM A307. BOLTS AND WASHERS SHALL BE GALVANIZED. AT THE CONTRACTOR'S OPTION, STAINLESS STEEL BOLTS AND WASHERS MAY BE USED AS AN ALTERNATE FOR THE 1" @ X 2 1/4" GALVANIZED BOLTS AND WASHERS. THEY SHALL CONFORM TO OR EXCEED THE MECHANICAL REQUIREMENTS OF ASTM A307. THE USE OF THIS ALTERNATE SHALL BE APPROVED BY THE ENGINEER.
  - C. WIRE STRUTS SHOWN IN THE TEMPORARY GUARDRAIL ANCHOR ASSEMBLY DETAIL ARE THE MINIMUM ALLOWABLE SIZE AND SHALL HAVE A MINIMUM TENSILE STRENGTH OF 100,000 PSI.
- TEMPORARY GUARDRAIL ANCHOR ASSEMBLY WITH BOLTS SHALL BE ASSEMBLED IN THE SHOP. BOLT THREADS MAY BE RECUT AS NECESSARY TO INSURE FIT.
- THE COST OF THE TEMPORARY GUARDRAIL ANCHOR ASSEMBLY COMPLETE IN PLACE, SHALL BE INCLUDED, AS APPLICABLE, IN THE UNIT CONTRACT PRICE BID FOR 3'-0" X 1'-9" PRESTRESSED CONCRETE CORED SLAB OR LUMP SUM PRICE BID FOR APPROACH SLABS.
- FERRULES TO BE PLUGGED DURING THE CASTING OF THE CORED SLAB UNITS OR POURING OF APPROACH SLAB AS RECOMMENDED BY THE MANUFACTURER.
- AT THE CONTRACTOR'S OPTION, FERRULES WITH OPEN OR CLOSED ENDS MAY BE USED.
- PAYMENT FOR TEMPORARY GUARDRAIL, POST AND POST PLATES IS INCLUDED IN ROADWAY PAY ITEMS.
- FOR APPROACH SLAB DETAILS, SEE SHEETS S-23 AND S-24.



PLAN

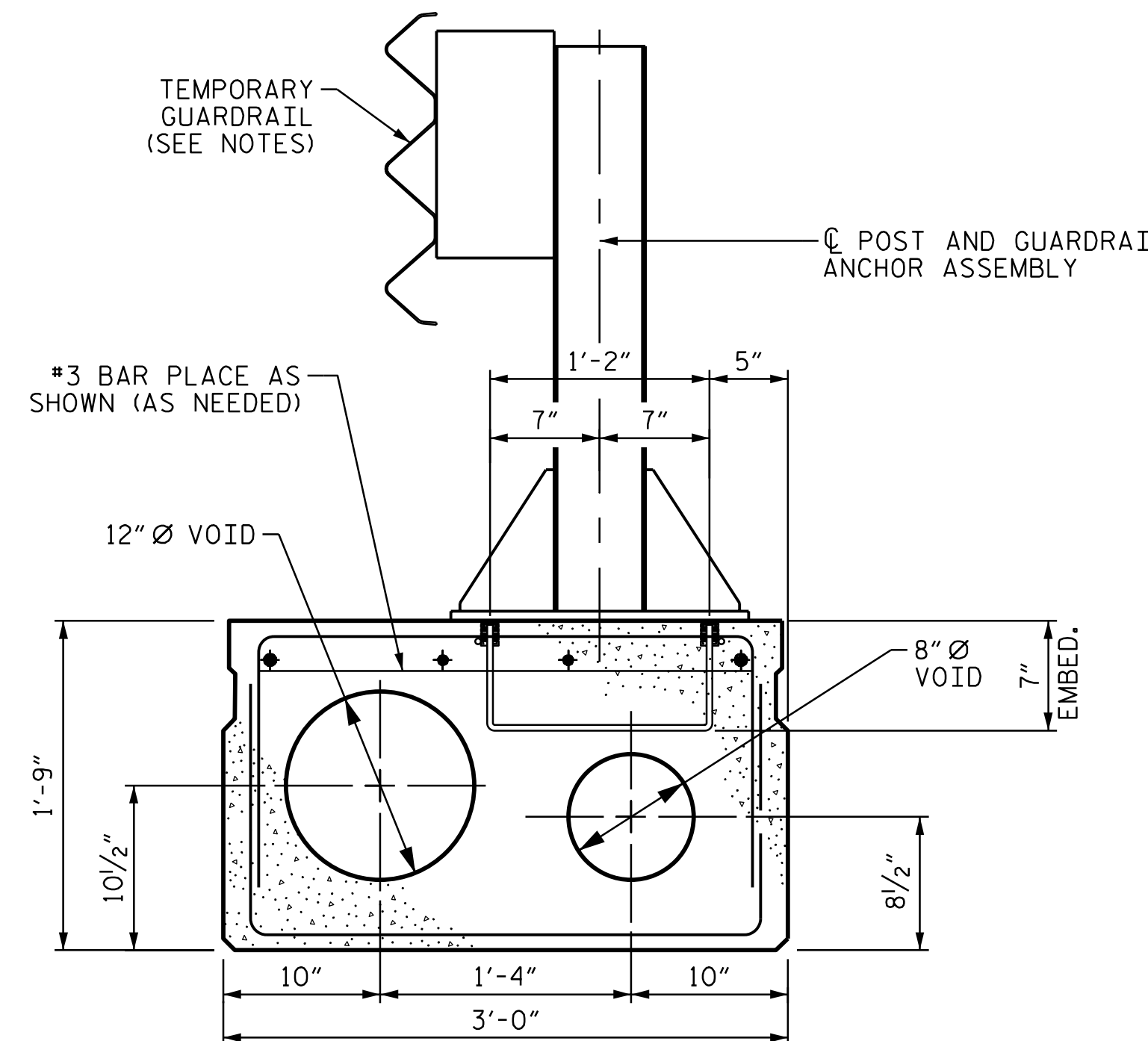


SIDE VIEW

ELEVATION

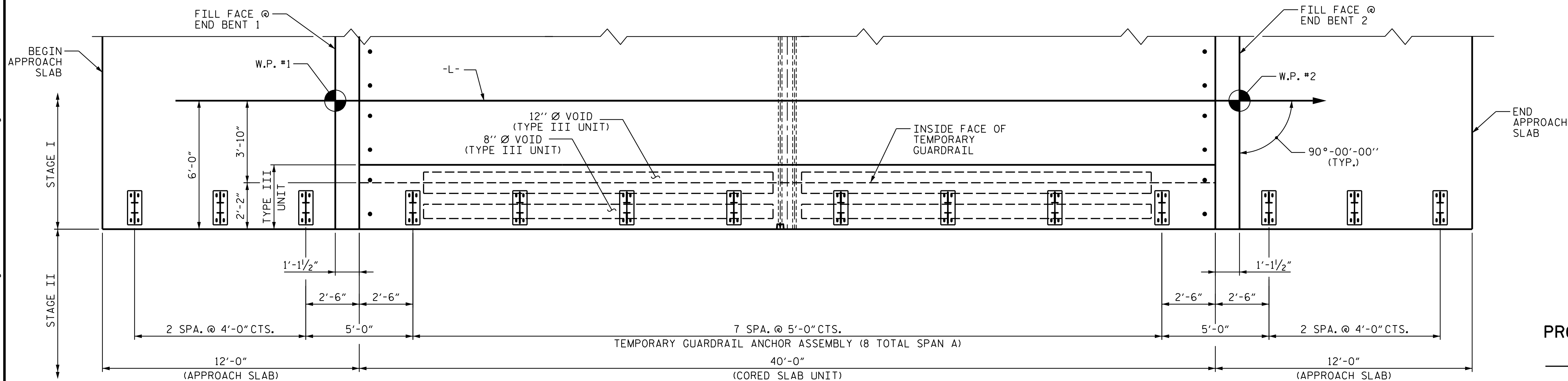
TEMPORARY GUARDRAIL ANCHOR ASSEMBLY

(8 ASSEMBLIES REQUIRED IN THE TYPE III CORED SLAB UNIT)  
(6 ASSEMBLIES REQUIRED IN THE APPROACH SLABS)



SECTION OF ANCHOR ASSEMBLY LOCATION

(TYPE III UNIT OF STAGE I)  
THE #3 BARS ARE INCIDENTAL AND THEIR COST SHALL BE INCLUDED IN THE PRICE BID FOR THE PRESTRESSED CONCRETE CORED SLABS.



RAIL POST SPACING FOR TEMPORARY GUARDRAIL - STAGE I

PROJECT NO. B-5893  
MITCHELL COUNTY  
STATION: 12+89.50 -L-

STATE OF NORTH CAROLINA  
DEPARTMENT OF TRANSPORTATION  
RALEIGH

ANCHORAGE DETAILS FOR  
TEMPORARY GUARDRAIL  
ANCHOR ASSEMBLY FOR  
TYPE III - STAGE I

DOCUMENT NOT CONSIDERED FINAL  
UNLESS ALL SIGNATURES COMPLETED

REVISIONS						SHEET NO.
NO.	BY:	DATE:	NO.	BY:	DATE:	TOTAL SHEETS
1			3			24
2			4			

3/24/2023 4:18:30PM -14 B-5893 Bridge 19 over Cub Creek Structures 2.0 Drafting\Drawings\401\_025\_B5893\_SMU\_TOR.dgn

DESIGNED BY: J. WHEATLEY DATE: MAR 2023  
DRAWN BY: J. WHEATLEY DATE: MAR 2023  
CHECKED BY: T. KIRSCHBAUM DATE: MAR 2023  
DESIGN ENGINEER OF RECORD: J. WHEATLEY DATE: MAR 2023