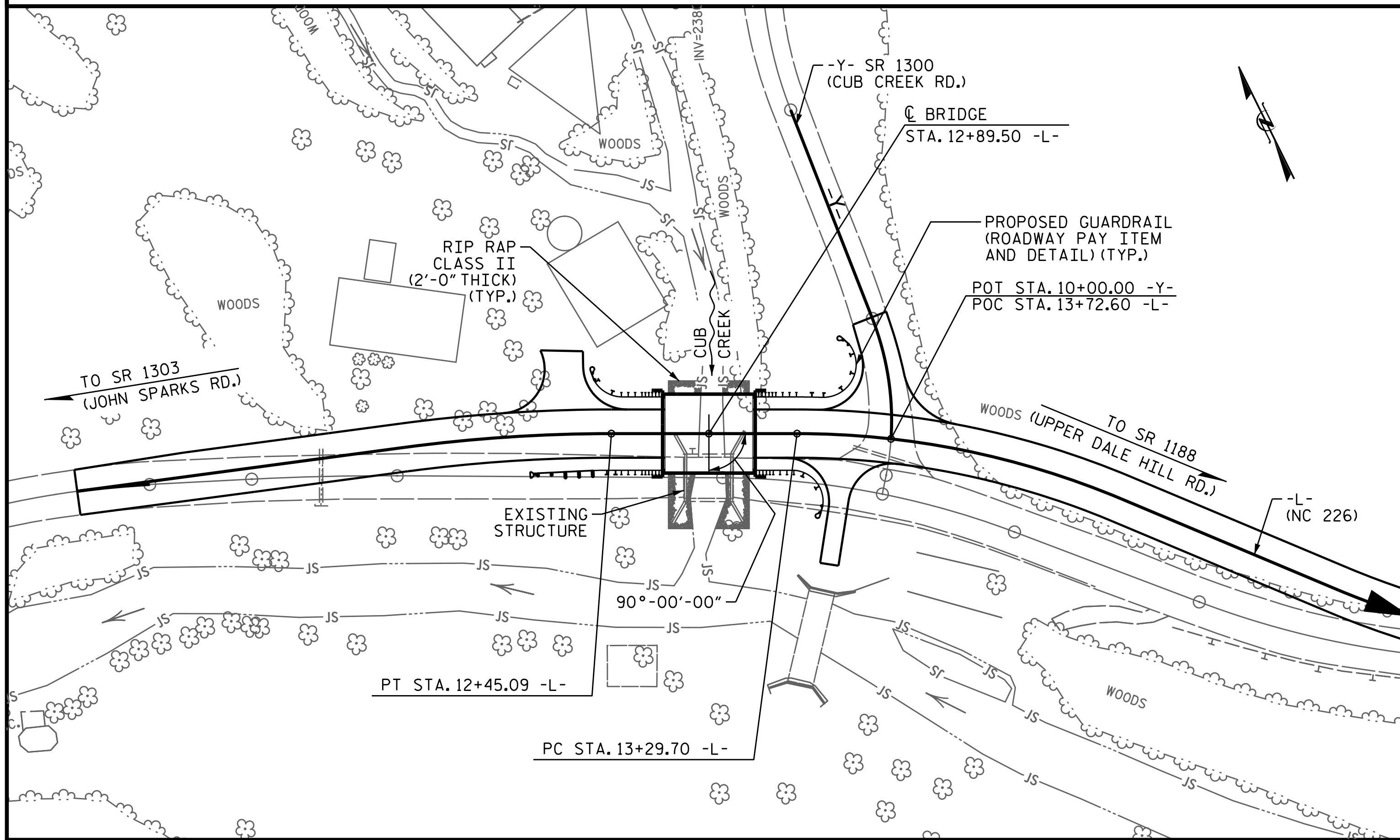


BM #1: -L- STA. 11+62.38 41.56' RIGHT, ELEV. = 2366.66' RR SPIKE SET IN BASE OF 12" WALNUT



LOCATION SKETCH

FOR UTILITY INFORMATION, SEE UTILITY PLANS AND SPECIAL PROVISIONS.

NOTES

ASSUMED LIVE LOAD = HL-93 OR ALTERNATE LOADING.

THIS BRIDGE HAS BEEN DESIGNED IN ACCORDANCE WITH THE AASHTO LRFD BRIDGE DESIGN SPECIFICATIONS.

THIS BRIDGE IS LOCATED IN SEISMIC ZONE 1.

FOR OTHER DESIGN DATA AND GENERAL NOTES, SEE SHEET SN.

FOR SUBMITTAL OF WORKING DRAWINGS, SEE SPECIAL PROVISIONS.

FOR FALSEWORK AND FORMWORK, SEE SPECIAL PROVISIONS.

FOR CRANE SAFETY, SEE SPECIAL PROVISIONS.

FOR GROUT FOR STRUCTURES, SEE SPECIAL PROVISIONS.

THE MATERIAL SHOWN IN THE CROSS-HATCHED AREA ON SHEET S-1 SHALL BE EXCAVATED FOR A DISTANCE OF 24 FT. (LEFT) 44 FT. (RIGHT) OF -L- AND AS DIRECTED BY THE ENGINEER. THIS WORK WILL BE PAID FOR AT THE CONTRACT LUMP SUM PRICE FOR UNCLASSIFIED STRUCTURE EXCAVATION. SEE SECTION 412 OF THE STANDARD SPECIFICATIONS.

TEMPORARY SHORING WILL BE REQUIRED IN THE AREA INDICATED IN THE PLAN VIEW.

FOR LIMITS OF TEMPORARY SHORING FOR MAINTENANCE OF TRAFFIC, SEE TRAFFIC CONTROL PLANS. FOR PAY ITEM FOR TEMPORARY SHORING FOR MAINTENANCE OF TRAFFIC, SEE ROADWAY PLANS.

THE EXISTING STRUCTURE CONSISTING OF A SINGLE 22'-0" SPAN, WITH A CLEAR ROADWAY WIDTH OF 19'-2", REINFORCED CONCRETE DECK ON REINFORCED CONCRETE END BENTS AND LOCATED AT PROPOSED STRUCTURE SHALL BE REMOVED. THE EXISTING BRIDGE IS APPROXIMATELY 20'-1" DOWNSTREAM FROM PROPOSED STRUCTURE SHALL BE REMOVED. THE EXISTING BRIDGE IS PRESENTLY NOT POSTED FOR LOAD LIMIT. SHOULD THE STRUCTURAL INTEGRITY OF THE BRIDGE DETERIORATE DURING CONSTRUCTION OF THE PROPOSED BRIDGE, A LOAD LIMIT MAY BE POSTED AND MAY BE REDUCED AS FOUND NECESSARY DURING THE LIFE OF THE PROJECT.

THE SUBSTRUCTURE OF THE EXISTING BRIDGE INDICATED ON THE PLANS IS FROM THE BEST INFORMATION AVAILABLE. SINCE THIS INFORMATION IS SHOWN FOR THE CONVENIENCE OF THE CONTRACTOR, THE CONTRACTOR SHALL HAVE NO CLAIM WHATSOEVER AGAINST THE DEPARTMENT OF TRANSPORTATION FOR ANY DELAYS OR ADDITIONAL COST INCURRED BASED ON DIFFERENCES BETWEEN THE EXISTING BRIDGE SUBSTRUCTURE SHOWN ON THE PLANS AND THE ACTUAL CONDITIONS AT THE PROJECT SITE.

REMOVAL OF THE EXISTING BRIDGE SHALL BE PERFORMED SO AS NOT TO ALLOW DEBRIS TO FALL INTO THE WATER. THE CONTRACTOR SHALL REMOVE THE BRIDGE AND SUBMIT PLANS FOR DEMOLITION IN ACCORDANCE WITH ARTICLE 402-2 OF THE STANDARD SPECIFICATIONS.

THIS STRUCTURE HAS BEEN DESIGNED IN ACCORDANCE WITH "HEC 18 - EVALUATING SCOUR AT BRIDGES".

ASPHALT WEARING SURFACE IS INCLUDED IN THE ROADWAY QUANTITY ON ROADWAY PLANS.

FOR ASBESTOS ASSESSMENT FOR BRIDGE DEMOLITION AND RENOVATION ACTIVITIES, SEE SPECIAL PROVISIONS.

FOR EROSION CONTROL MEASURES, SEE EROSION CONTROL PLANS.

STEEL SHEET PILING REQUIRED FOR SHORING SHALL BE HOT ROLLED.

TOTAL BILL OF MATERIAL

	REMOVAL OF EXISTING STRUCTURE @ STA. 12+89.50 -L-	ASBESTOS ASSESSMENT	UNCLASSIFIED STRUCTURE EXCAVATION	CLASS A CONCRETE	BRIDGE APPROACH SLABS	REINFORCING STEEL	PILE DRIVING EQUIPMENT SETUP FOR HP 14 x 73 STEEL PILES	HP 14 X 73 STEEL PILES	STEEL PILE POINTS	VERTICAL CONCRETE BARRIER RAIL	RIP RAP CLASS II (2'-0" THICK)	GEOTEXTILE FOR DRAINAGE	ELASTOMERIC BEARINGS	3'-0" X 1'-9" PRESTRESSED CONCRETE CORED SLABS
	LUMP SUM	LUMP SUM	LUMP SUM	CU. YDS.	LUMP SUM	LBS.	No.	No.	EA.	LIN. FT.	TONS	SQ. YDS.	LUMP SUM	No.
SUPERSTRUCTURE					LUMP SUM					80.0			LUMP SUM	12
END BENT 1			LUMP SUM	36.5		5,109	6	6	120	6	97	108		
END BENT 2			LUMP SUM	39.6		5,549	6	6	90	6	93	104		
TOTAL	LUMP SUM	LUMP SUM	LUMP SUM	76.1	LUMP SUM	10,658	12	12	210	12	190	212	LUMP SUM	12

PROJECT NO. B-5893
MITCHELL COUNTY
 STATION: 12+89.50 -L-

SHEET 4 OF 4

STATE OF NORTH CAROLINA
 DEPARTMENT OF TRANSPORTATION
 RALEIGH

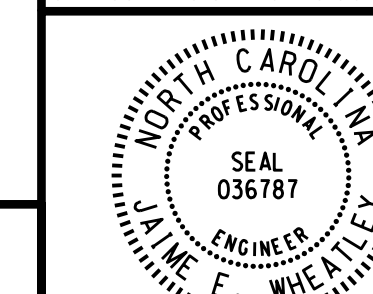
GENERAL DRAWING
 FOR BRIDGE OVER CUB CREEK
 ON NC 226 BETWEEN
 SR 1303 AND SR 1300

REVISIONS

NO.	BY:	DATE:	NO.	BY:	DATE:
1			3		
2			4		

SHEET NO.
S-4
 TOTAL SHEETS
24

DOCUMENT NOT CONSIDERED FINAL
 UNLESS ALL SIGNATURES COMPLETED



WSP USA Inc.
 434 FAYETTEVILLE STREET
 SUITE 1500
 RALEIGH, NC 27601
 TEL: 1.919.836.4040
 LICENSE NO. F-0165

DocuSigned by:
 Jaime Wheatley
 2E7985E107487

3/24/2023 4:18:50PM -14 B-5893 Bridge 19 over Cub Creek Structures\2.0 Drafting\DCNs\101_009_B5893_SMU_GD-4.dgn

DESIGNED BY: J. WHEATLEY DATE: MAR 2023
 DRAWN BY: J. WHEATLEY DATE: MAR 2023
 CHECKED BY: T. KIRSCHBAUM DATE: MAR 2023
 DESIGN ENGINEER OF RECORD: J. WHEATLEY DATE: MAR 2023