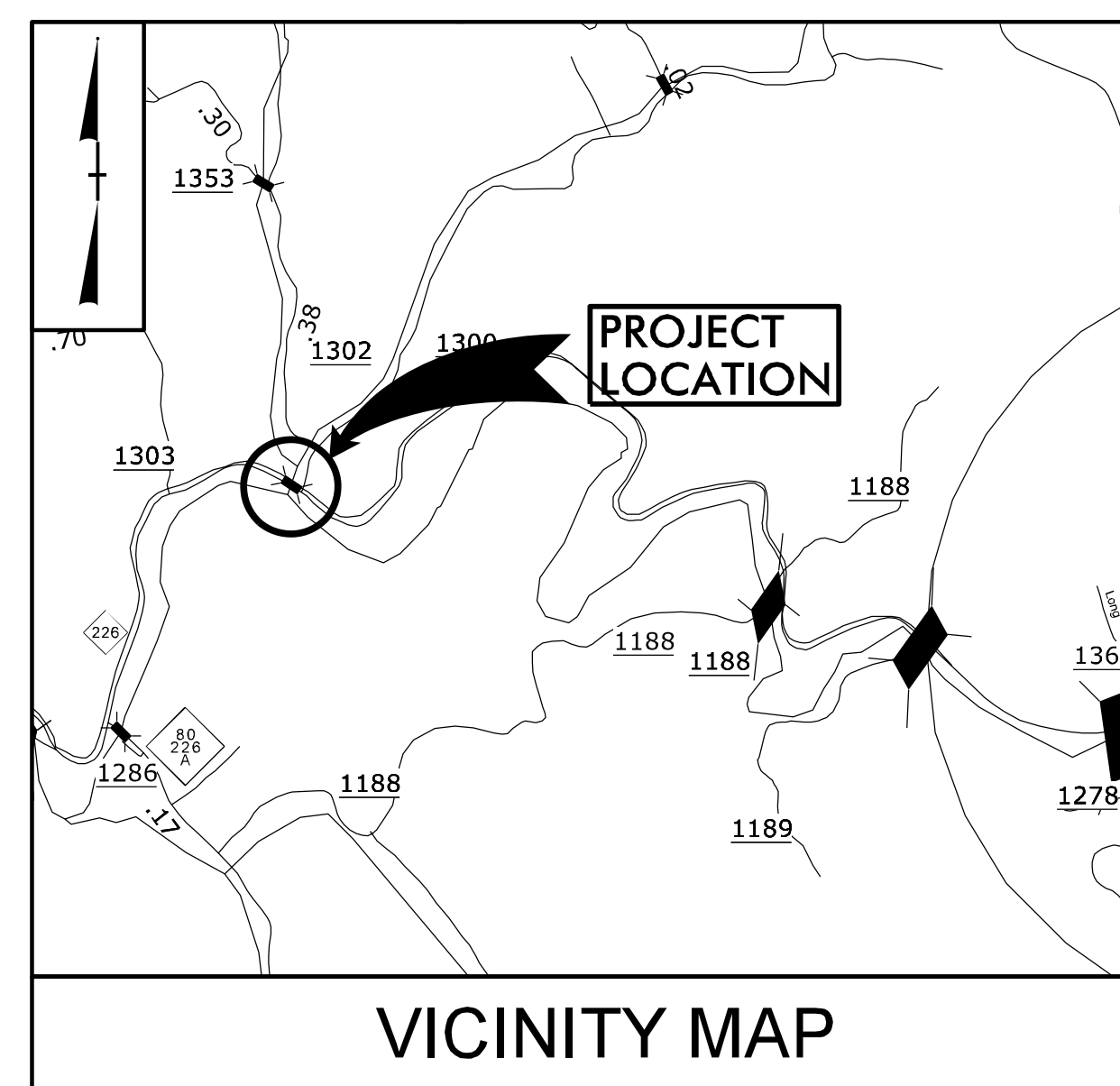


TIP PROJECT: B-5893

See Sheet 1A For Index of Sheets (Not Included)
See Sheet 1B For Symbology Sheet

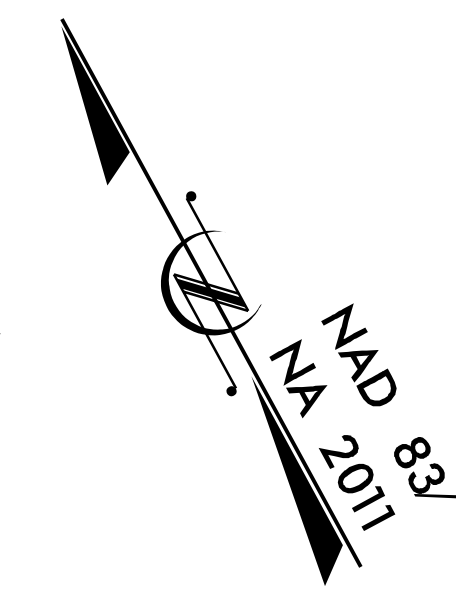


STATE OF NORTH CAROLINA
DIVISION OF HIGHWAYS

PLAN FOR PROPOSED
HIGHWAY EROSION CONTROL

MITCHELL COUNTY

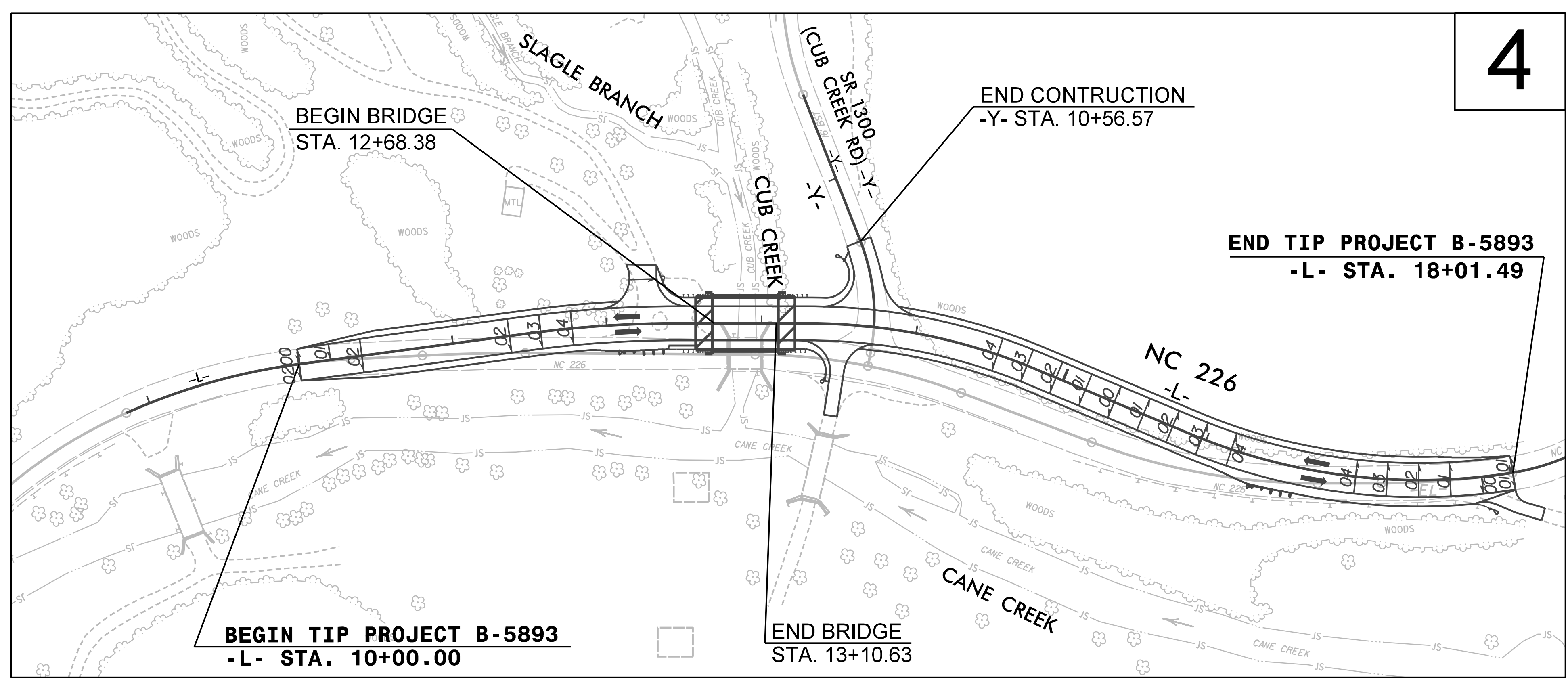
**LOCATION: REPLACE BRIDGE No. 19
OVER CUB CREEK ON NC 226**
TYPE OF WORK: GRADING, DRAINAGE, PAVING AND STRUCTURE



STATE	STATE PROJECT REFERENCE NO.	SHEET NO.	TOTAL SHEETS
N.C.	B-5893	EC-1	
STATE PROJ. NO.	F.A. PROJ. NO.	DESCRIPTION	

EROSION AND SEDIMENT CONTROL MEASURES

Std. #	Description	Symbol
1630.03	Temporary Silt Ditch	— m —
1630.05	Temporary Diversion	— TD —
1605.01	Temporary Silt Fence	— III — III — III —
1606.01	Special Sediment Control Fence	— ZZZZZ —
1622.01	Temporary Berms and Slope Drains	— T —
1630.02	Silt Basin Type B	— [Symbol] —
1633.01	Temporary Rock Silt Check Type-A	— [Symbol] —
	Temporary Rock Silt Check Type-A with Matting and Polyacrylamide (PAM)	— [Symbol] —
1633.02	Temporary Rock Silt Check Type-B	— [Symbol] —
	Wattle / Coir Fiber Wattle	— [Symbol] —
	Wattle / Coir Fiber Wattle with Polyacrylamide (PAM)	— [Symbol] —
1634.01	Temporary Rock Sediment Dam Type-A	— [Symbol] —
1634.02	Temporary Rock Sediment Dam Type-B	— [Symbol] —
1635.01	Rock Pipe Inlet Sediment Trap Type-A	— [Symbol] —
1635.02	Rock Pipe Inlet Sediment Trap Type-B	— [Symbol] —
1630.04	Stilling Basin	— [Symbol] —
1630.06	Special Stilling Basin	— [Symbol] —
	Rock Inlet Sediment Trap:	
1632.01	Type A	— [Symbol] —
1632.02	Type B	— [Symbol] —
1632.03	Type C	— [Symbol] —
	Skimmer Basin	— [Symbol] —
	Tiered Skimmer Basin	— [Symbol] —
	Infiltration Basin	— [Symbol] —

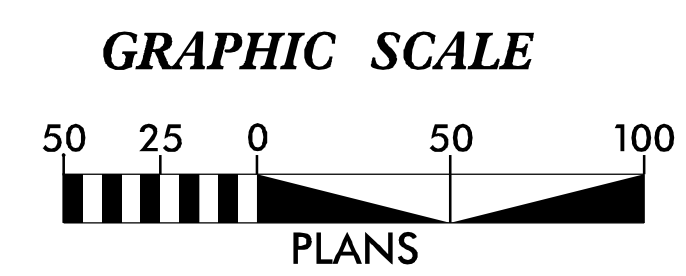


TO BAKERSVILLE

THIS PROJECT CONTAINS EROSION CONTROL PLANS FOR CLEARING AND GRUBBING PHASE OF CONSTRUCTION.

THIS PROJECT HAS BEEN DESIGNED TO SENSITIVE WATERSHED STANDARDS.

ENVIRONMENTALLY SENSITIVE AREA(S) EXIST ON THIS PROJECT
Refer To E. C. Special Provisions for Special Considerations.



THESE EROSION AND SEDIMENT CONTROL PLANS COMPLY WITH THE APPLICABLE REGULATIONS SET FORTH BY THE NCG-010000 GENERAL CONSTRUCTION PERMIT EFFECTIVE APRIL 1, 2019 AND ISSUED BY THE NORTH CAROLINA DEPARTMENT OF ENVIRONMENTAL QUALITY DIVISION OF WATER RESOURCES.



1001 Morehead Square Drive, Suite 610
Charlotte, NC 28203 - 704.342.5401
www.wsp.com
LICENSE NO. F-0891

Prepared in the Office of:

WSP

1001 Morehead Square Dr, Suite 610
Charlotte, NC 28203
NC LIC NO. F-0891

Designed by:

Owen Britt, PE
NAME

4228
LEVEL III CERTIFICATION NO.

Roadway Standard Drawings

The following roadway english standards as appear in "Roadway Standard Drawings"- Roadway Design Unit - N. C. Department of Transportation - Raleigh, N. C., dated January 2018 and the latest revision thereto are applicable to this project and by reference hereby are considered a part of these plans.

1604.01 Railroad Erosion Control Detail	1632.01 Rock Inlet Sediment Trap Type A
1605.01 Temporary Silt Fence	1632.02 Rock Inlet Sediment Trap Type B
1606.01 Special Sediment Control Fence	1632.03 Rock Inlet Sediment Trap Type C
1607.01 Gravel Construction Entrance	1633.01 Temporary Rock Silt Check Type A
1622.01 Temporary Berms and Slope Drains	1633.02 Temporary Rock Silt Check Type B
1630.01 Riser Basin	1634.01 Temporary Rock Sediment Dam Type A
1630.02 Silt Basin Type B	1634.02 Temporary Rock Sediment Dam Type B
1630.03 Temporary Silt Ditch	1635.01 Rock Pipe Inlet Sediment Trap Type A
1630.04 Stilling Basin	1635.02 Rock Pipe Inlet Sediment Trap Type B
1630.05 Temporary Diversion	1640.01 Coir Fiber Baffle
1630.06 Special Stilling Basin	1645.01 Temporary Stream Crossing
1631.01 Matting Installation	