



NC DEPARTMENT OF TRANSPORTATION
 DIVISION OF HIGHWAYS
 STRUCTURE MANAGEMENT UNIT

ATTENTION: **NON-NBIS; PAR: DELIENATOR, DECK, END BENTS, RAIL**

Structure Safety Report

Routine Element Inspection

INSPECTION DATE: 10/19/2021

DIVISION: 13 COUNTY: MITCHELL STRUCTURE NUMBER: 600019 FREQUENCY: 24 MONTHS

FACILITY CARRIED: NC226 MILE POST: _____

LOCATION: .01 MI.N.JCT.SR1300

FEATURE INTERSECTED: CUB CREEK

LATITUDE: 36° 1' 5.66" LONGITUDE: 82° 11' 0.17"

SUPERSTRUCTURE: REINFORCED CONCRETE SLAB

SUBSTRUCTURE: ABUTMENTS:REINFORCED CONCRETE

SPANS: 1 SPAN. SEE SPAN PROFILE SHEET FOR SPAN DETAILS

FRACTURE CRITICAL TEMPORARY SHORING SCOUR CRITICAL SCOUR PLAN OF ACTION

GRADES: (Inspector/NBI Coding) DECK 5/5 SUPERSTRUCTURE 5/5 SUBSTRUCTURE 5/5 CULVERT N/N

POSTED SV: Not Posted POSTED TTST: Not Posted

OTHER SIGNS PRESENT: DELINEATORS (3), NARROW BRIDGE (2)



Sign noticed issued for	Number Required
<u>NO</u> WEIGHT LIMIT	<u>0</u>
<u>YES</u> DELINEATORS	<u>1</u>
<u>NO</u> NARROW BRIDGE	<u>0</u>
<u>NO</u> ONE LANE BRIDGE	<u>0</u>
<u>NO</u> LOW CLEARANCE	<u>0</u>

DIRECTION OF INSPECTION S-N

DIRECTION MATCHES PLANS _____

SOUTH APPROACH LOOKING NORTH

INSPECTED BY Joseph Huntsinger	SIGNATURE 	ASSISTED BY Dennis Wilson
-----------------------------------	---------------	------------------------------

NATIONAL BRIDGE INVENTROY ----- STRUCTURE INVENTORY AND APPRAISAL

12/10/2021

IDENTIFICATION

(1) STATE NAME NORTH CAROLINA BRIDGE **600019**
 (8) STRUCTURE NUMBER (FEDERAL) **1210019**
 (5) INVENTORY ROUTE (ON/UNDER) ON **131002260**
 (2) STATE HIGHWAY DEPARTMENT DISTRICT **13**
 (3) COUNTY CODE (FEDERAL) **121** (4) PLACE CODE **00000**
 (6) FEATURE INTERSECTED **CUB CREEK**
 (7) FACILITY CARRIED **NC226**
 (9) LOCATION **.01 MI.N.JCT.SR1300**
 (11) MILEPOINT **0.0**
 (12) BASE HIGHWAY NETWORK **0**
 (13) LRS INVENTORY ROUTE & SUBROUTE
 (16) LATITUDE **36° 1' 5.66"** (17) LONGITUDE **82° 11' 0.17"**
 (98) BORDER BRIDGE STATE CODE PERCENT SHARED
 (99) BORDER BRIDGE STRUCTURE NUMBER

SUFFICIENCY RATING **58.23**
 STATUS = **Functionally Obsolete**

CLASSIFICATION **CODE**

(112) NBIS BRIDGE SYSTEM **NO**
 (104) HIGHWAY SYSTEM **Inventory Route not on NHS 0**
 (26) FUNCTIONAL CLASS **Rural Major Collector 07**
 (100) STRAHNET HIGHWAY **Not a STRAHNET Route 0**
 (101) PARALLEL STRUCTURE **No parallel structure exists N**
 (102) DIRECTION OF TRAFFIC **2-way traffic 2**
 (103) TEMPORARY STRUCTURE
 (110) DESIGNATED NATIONAL NETWORK - on national network for trucks **1**
 (20) TOLL **On Free Road 3**
 (21) MAINT - **01**
 (22) OWNER - **01**
 (37) HISTORICAL SIGNIFICANCE - **5**

STRUCTURE TYPE AND MATERIAL

(43) STRUCTURE TYPE MAIN **Concrete**
 TYPE **Slab** CODE **101**
 (44) STRUCTURE TYPE APPROACH
 TYPE CODE
 (45) NUMBER OF SPANS IN MAIN UNIT **1**
 (46) NUMBER OF SPANS IN APPROACH **0**
 (107) DECK STRUCTURE TYPE CODE **1**
 (108) WEARING SURFACE/PROTECTIVE SYSTEM
 (A) TYPE OF WEARING SURFACE CODE **6**
 (B) TYPE OF MEMBRANE CODE **0**
 (C) TYPE OF DECK PROTECTION CODE **0**

CONDITION **CODE**

(58) DECK **5**
 (59) SUPERSTRUCTURE **5**
 (60) SUBSTRUCTURE **5**
 (61) CHANNEL & CHANNEL PROTECTION **7**
 (62) CULVERTS **N**

LOAD RATING AND POSTING **CODE**

(31) DESIGN LOAD **H 15 2**
 (63) OPERATING RATING METHOD - **0**
 (64) OPERATING RATING - **HS-19 35**
 (65) INVENTORY RATING METHOD - **0**
 (66) INVENTORY RATING **HS-15 27**
 (70) BRIDGE POSTING **No Posting Required 5**
 (41) STRUCTURE OPEN, POSTED, OR CLOSED
 DESCRIPTION **Open, no restriction A**

AGE AND SERVICE

(27) YEAR BUILT **1935**
 (106) YEAR RECONSTRUCTED **0**
 (42) TYPE OF SERVICE ON - **Highway**
 OFF - **Waterway** CODE **15**
 (28) LANES ON STRUCTURE **2** LANES UNDER STRUCTURE **0**
 (29) AVERAGE DAILY TRAFFIC **1000**
 (30) YEAR OF ADT **2019** (109) TRUCK ADT PCT **7**
 (19) BYPASS OR DETOUR LENGTH **2.0**

APPRAISAL **CODE**

(67) STRUCTURAL EVALUATION **5**
 (68) DECK GEOMETRY **2**
 (69) UNDERCLEARANCES, VERT & HORIZ **N**
 (71) WATERWAY ADEQUACY **7**
 (72) APPROACH ROADWAY ALIGNMENT **8**
 (36) TRAFFIC SAFETY FEATURES **0000**
 (113) SCOUR CRITICAL BRIDGES **U**

GEOMETRIC DATA

(48) LENGTH OF MAXIMUM SPAN **20.0**
 (49) STRUCTURE LENGTH **22.0**
 (50) CURB OR SIDEWALK: LEFT **0.0** RIGHT **0.0**
 (51) BRIDGE ROADWAY WIDTH, CURB TO CURB **19.2**
 (52) DECK WIDTH OUT TO OUT **21.8**
 (32) APPROACH ROADWAY WITH (W/ SHOULDERS) **22.0**
 (33) BRIDGE MEDIAN **No median** CODE **0**
 (34) SKEW **15** (35) STRUCTURE FLARED **0**
 (10) INVENTORY ROUTE MIN VERT CLEAR **999.9**
 (47) INVENTORY ROUTE TOTAL HORIZ CLEAR **19.2**
 (53) MIN VERT CLEAR OVER BRIDGE RDWY **999.9**
 (54) MIN VERT UNDERCLEAR: REFERENCE **0.0**
 (55) MIN LAT UNDERCLEARANCE RT: REFERENCE **N 0.0**
 (56) MIN LAT UNDERCLEARANCE LT: **0.0**

PROPOSED IMPROVEMENTS

(75) TYPE OF WORK CODE
 (76) LENGTH OF STRUCTURE IMPROVEMENT
 (94) BRIDGE IMPROVEMENT COST
 (95) ROADWAY IMPROVEMENT COST
 (96) TOTAL PROJECT COST
 (97) YEAR OF IMPROVEMENT COST ESTIMATE
 (114) FUTURE ADT **2,000** YEAR OF FUTURE ADT **2040**

NAVIGATION DATA

(38) NAVIGATION CONTROL - CODE **0**
 (111) PIER PROTECTION CODE
 (39) NAVIGATION VERTICAL CLEARANCE **0.0**
 (116) VERT - LIFT BRIDGE NAV MIN VERT CLEAR **0.0**
 (40) NAVIGATION HORIZONTAL CLEARANCE **0.0**

INSPECTION

(90) INSPECTION DATE **10/21** (91) FREQUENCY **24**
 (92) CRITICAL FEATURE INSPECTION (93) CFI DATE
 A) FRACTURE CRIT DETAIL A)
 B) UNDERWATER INSP B)
 C) OTHER SPECIAL INSP C)

SCOUR

Superstructure Build Details

Span Number 1

Span Length 22.0000

Skew 75.0000

Number of Items	Type of Component	Element Name	Quantity	Protective System Applied	Quantity (Sq Ft)
1	Reinforced Concrete Deck Slab	Reinforced Concrete Slabs	464 Square Feet		
1	Asphalt Wearing Surface	Wearing Surface	398 Square Feet		
2	Concrete Railing	Reinforced Concrete Bridge Railing	44 Feet		

Structure Element Scoring

Structure Number: 600019

Inspection Date 10/19/202
1

Element Number	Parent Number	Element Name	Location	Total Quantity	Level 1 Quantity	Level 2 Quantity	Level 3 Quantity	Level 4 Quantity
38	0	Reinforced Concrete Slabs	Deck	464	202	200	62	0
215	0	Reinforced Concrete Abutment	Abutments	94	53	6	35	0
220	0	Reinforced Concrete Pile Cap/Footing	Footing	23	0	0	23	0
331	0	Reinforced Concrete Bridge Railing	Bridge Rail	44	37	6	1	0
510	0	Wearing Surface	Wearing Surfaces	398	398	0	0	0

Summary of Maintenance Needs

Maintenance By Defect

Structure Number: **600019**

Inspection Date: **10/19/2021**

MMS Code	Element Name	Defect Name	Recommended Quantity
3326	Reinforced Concrete Slabs	Efflorescence/Rust Staining	30 Square Feet
3326	Reinforced Concrete Slabs	Exposed Rebar	32 Square Feet
3326	Reinforced Concrete Slabs	Cracking (RC and Other)	200 Square Feet
3350	Reinforced Concrete Abutment	Efflorescence/Rust Staining	29 Feet
3350	Reinforced Concrete Abutment	Exposed Rebar	6 Feet
3348	Reinforced Concrete Pile Cap/Footing	Delamination/Spall	23 Feet
3318	Reinforced Concrete Bridge Railing	Exposed Rebar	1 Feet

Element Structure Maintenance Quantities

Structure Number: 600019

Inspection Date 10/19/2021

Location	MMS Code	Description	Maint Quantity	Total Quantity	Severe Quantity	Poor Quantity	Fair Quantity	Good Quantity
Abutments	3350	Maintenance of Concrete Wings and Wall	35	94	0	35	6	53
Bridge Rail	3318	Maintenance of Concrete Bridge Rail	1	44	0	1	6	37
Deck	3326	Maintenance of Concrete Deck	262	464	0	62	200	202
Footing	3348	Maintenance of Concrete Substructure	23	23	0	23	0	0
Wearing Surfaces	2816	Asphalt Surface Repair	0	398	0	0	0	398

Priority Actions Request

Structure Number 600019

Span1

3326 Deck Reinforced Concrete Deck Slab

Priority Level	Defect Type	Quantity	Defect Description
2	Exposed Rebar	20	Span 1 Deck: 1.5' WIDE X FULL LENGTH X 6" DEEP DELAMINATION ALONG THE LEFT SIDE OF THE SLAB WITH HEAVY EFFLORESCENCE BUILDUP AND ONE EXPOSED LONGITUDINAL STEEL BAR. STEEL IS CORRODING WITH 0.0625" PITTING AND SCALE LOSS. (PAR)
2	Exposed Rebar	12	Span 1 Deck: 12' LONG X 1.5' WIDE X 4" DEEP DELAMINATION ALONG THE RIGHT SIDE OF THE SLAB BEGINNING 5' FROM THE NEAR END WITH HEAVY EFFLORESCENCE BUILDUP AND ONE LONGITUDINAL STEEL BAR EXPOSED. STEEL IS CORRODING WITH 0.0625" PITTING AND SCALE. (PAR)

3318 Right Bridge Rail Concrete Railing

Priority Level	Defect Type	Quantity	Defect Description
2	Exposed Rebar	1	Span 1 Right Bridge Rail: 9" WIDE X 1.5' HIGH X 4" DEEP SPALL IN NEAR END WITH ONE VERTICAL BAR EXPOSED AND CORRODING. (PAR)

Bent 1

3350 Abutment Reinforced Concrete Abutment

Priority Level	Defect Type	Quantity	Defect Description
2	Exposed Rebar	1	End Bent 1 Abutment: 1' WIDE X 9" HIGH X 2" DEEP DELAMINATION WITH EXPOSED AND CORRODING REINFORCING STEEL AT THE RIGHT SIDE OF THE END BENT, 5' UP FROM THE GROUND. (PAR)

Bent 2

3350 Abutment Reinforced Concrete Abutment

Priority Level	Defect Type	Quantity	Defect Description
2	Exposed Rebar	5	End Bent 2 Abutment: MULTIPLE SPALLS UP TO 2' WIDE X 6" HIGH ALONG THE RIGHT SIDE OF THE END BENT WITH REINFORCING STEEL EXPOSED AND CORRODING. (PAR)

Other Ground Mounted Signs

3250 Other Ground Mounted Signs Other Ground Mounted Signs

Priority Level	Defect Type	Quantity	Defect Description
2		3	DELINEATOR AT SOUTH WEST CORNER MISSING. (PAR)

Priority Actions Request

Structure Number 600019

Element Condition and Maintenance Data

Structure Number: 600019

Inspection Date: 10/19/2021

Span 1 **Deck**
Reinforced Concrete Deck Slab

Element Number	Element Name	Total Qty	CS1 Qty	CS2 Qty	CS3 Qty	CS4 Qty
38	Reinforced Concrete Slabs	464	202	200	62	0 Square Feet

Element Number	Defect Type	Defect Description	CS	CS Qty	Maint Qty
38	Efflorescence/Rust Staining	HEAVY EFFLORESCENCE BUILDUP ALONG BOTH SIDES OF THE SLAB, NEAR THE DELAMINATIONS.	3	30	30 Square Feet
38	Exposed Rebar	1.5' WIDE X FULL LENGTH X 6" DEEP DELAMINATION ALONG THE LEFT SIDE OF THE SLAB WITH HEAVY EFFLORESCENCE BUILDUP AND ONE EXPOSED LONGITUDINAL STEEL BAR. STEEL IS CORRODING WITH 0.0625" PITTING AND SCALE LOSS. (PAR)	3	20	20 Square Feet
38	Exposed Rebar	12' LONG X 1.5' WIDE X 4" DEEP DELAMINATION ALONG THE RIGHT SIDE OF THE SLAB BEGINNING 5' FROM THE NEAR END WITH HEAVY EFFLORESCENCE BUILDUP AND ONE LONGITUDINAL STEEL BAR EXPOSED. STEEL IS CORRODING WITH 0.0625" PITTING AND SCALE. (PAR)	3	12	12 Square Feet
38	Cracking (RC and Other)	HAIRLINE MAP CRACKS SCATTERED THROUGHOUT THE UNDERSIDE OF THE SLAB.	2	200	200 Square Feet

General Comments

Span 1 **Left Bridge Rail**
Concrete Railing

Element Number	Element Name	Total Qty	CS1 Qty	CS2 Qty	CS3 Qty	CS4 Qty
331	Reinforced Concrete Bridge Railing	22	22	0	0	0 Feet

Element Number	Defect Type	Defect Description	CS	CS Qty	Maint Qty
331	Patched Area	NEAR END OF THE LEFT RAIL HAS BEEN RE-POURED FOR 8' LONG AS REPAIRS TO PREVIOUS PAR.	1	8	Square Feet

General Comments

Span 1 **Right Bridge Rail**
Concrete Railing

Element Number	Element Name	Total Qty	CS1 Qty	CS2 Qty	CS3 Qty	CS4 Qty
331	Reinforced Concrete Bridge Railing	22	15	6	1	0 Feet

Element Number	Defect Type	Defect Description	CS	CS Qty	Maint Qty
331	Exposed Rebar	9" WIDE X 1.5' HIGH X 4" DEEP SPALL IN NEAR END WITH ONE VERTICAL BAR EXPOSED AND CORRODING. (PAR)	3	1	1 Feet
331	Damage	0.125" WIDE DIAGONAL CRACK BEGINNING AT 5.5' FROM THE FAR END AT THE TOP OF THE RAIL AND RUNNING BACK TOWARDS THE FAR END. SPALL AT FAR END OF RAIL HAS BEEN PATCHED AS REPAIR TO PREVIOUS PAR.	2	6	Feet

General Comments

End Bent 1 Abutment**Reinforced Concrete Abutment**

Element Number	Element Name	Total Qty	CS1 Qty	CS2 Qty	CS3 Qty	CS4 Qty
215	Reinforced Concrete Abutment	47	31	6	10	0 Feet

Element Number	Defect Type	Defect Description	CS	CS Qty	Maint Qty
215	Efflorescence/Rust Staining	EFFLORESCENCE BUILDUP EMANATING FROM BRIDGE SEAT.	3	9	9 Feet
215	Exposed Rebar	1' WIDE X 9" HIGH X 2" DEEP DELAMINATION WITH EXPOSED AND CORRODING REINFORCING STEEL AT THE RIGHT SIDE OF THE END BENT, 5' UP FROM THE GROUND. (PAR)	3	1	1 Feet
215	Efflorescence/Rust Staining	DIAGONAL CRACKS WITH EFFLORESCENCE IN LEFT END NEAR BREAKBACK.	2	6	Feet

General Comments

End Bent 2 Abutment**Reinforced Concrete Abutment**

Element Number	Element Name	Total Qty	CS1 Qty	CS2 Qty	CS3 Qty	CS4 Qty
215	Reinforced Concrete Abutment	47	22	0	25	0 Feet

Element Number	Defect Type	Defect Description	CS	CS Qty	Maint Qty
215	Efflorescence/Rust Staining	HEAVY EFFLORESCENCE BUILDUP ALONG THE BRIDGE SEAT AND RANDOM HAIRLINE CRACKS WITH EFFLORESCENCE STAINING	3	20	20 Feet
215	Exposed Rebar	MULTIPLE SPALLS UP TO 2' WIDE X 6" HIGH ALONG THE RIGHT SIDE OF THE END BENT WITH REINFORCING STEEL EXPOSED AND CORRODING. (PAR)	3	5	5 Feet

General Comments

End Bent 2 Footing**Reinforced Concrete Footing**

Element Number	Element Name	Total Qty	CS1 Qty	CS2 Qty	CS3 Qty	CS4 Qty
220	Reinforced Concrete Pile Cap/Footing	23	0	0	23	0 Feet

Element Number	Defect Type	Defect Description	CS	CS Qty	Maint Qty
220	Delamination/Spall	FULL LENGTH X FULL HEIGHT X 3" DEEP SCALING	3	23	23 Feet

General Comments

Elements Verified

Location	Name	Component	Element Name	Amount
Span 1	Deck	Reinforced Concrete Deck Slab	Reinforced Concrete Slabs	464
Span 1	Left Bridge Rail	Concrete Railing	Reinforced Concrete Bridge Railing	22
Span 1	Right Bridge Rail	Concrete Railing	Reinforced Concrete Bridge Railing	22
Span 1	Wearing Surface	Asphalt Wearing Surface	Wearing Surface	398
End Bent 1	Abutment	Reinforced Concrete Abutment	Reinforced Concrete Abutment	47
End Bent 2	Abutment	Reinforced Concrete Abutment	Reinforced Concrete Abutment	47
End Bent 2	Footing	Reinforced Concrete Footing	Reinforced Concrete Pile Cap/Footing	23

General Inspection Notes

National Bridge and NC Inspection Items

Structure Number: 600019

Inspection Date: 10/19/2021

National Bridge Inventory Items

Item	Grade Scale	Grade
Item 58: Deck	0 - 9 , N	5
Item 59: Superstructure	0 - 9 , N	5
Item 60: Substructure	0 - 9 , N	5
Item 61: Channel and Channel Protection	0 - 9 , N	7
Item 62: Culvert	0 - 9 , N	N
Item 71: Waterway Adequacy	0 - 9 , N	7
Item 72: Approach Roadway Alignment	0 - 9 , N	8

Note:

Items 58,59,60,62 reflect this inspection only.

For overall NBI coding grade, see cover sheet.

Note: If NBI Inspection Item is not present, code NBI item with "N"

NC SMU Inspection Items

Item	Grade Scale	Grade	Maint. Qty.	Maint. Code
Deck Debris	G, F, P, or C	G	0	3376
Drainage System	G, F, P, or C	G	0	3332
Utilities	G, F, P, or C			
Slope Protection	G, F, P, or C		0	3352
Scour	G, F, P, or C	G		
Wingwall	G, F, P, or C		0	3350
Field Scour Evaluation		L		
Drift	G, F, P, or C	G	0	3366
Fender System	G, F, P, or C		0	3364
Movable Span Machinery	G, F, P, or C			
Response to Live Load	G, F, P, or C	G		
Superstructure Paint Code				

Note: If NC SMU Inspection Item is not present, leave NC SMU item blank

Inspection Information

Item	Grade Scale	Grade
Sign Noticed Issued	YES/NO	Y
Priority Maintenance Request Submitted	YES/NO	Y
Inspection Time	Hours	3
Traffic Control Time	Hours	
Snooper Time	Hours	
Ladder Used	YES/NO	N
Bucket Truck Used	YES/NO	N
Boat Used	YES/NO	N
Other Equipment Used	YES/NO	N
Portion of Structure in > 3' of water	YES/NO	N

National Bridge and NC SMU Inspection Item Details

Structure Number: 600019

Inspection Date: 10/19/2021

Item	Sign Notice Issued	Grade	Y	Maint Code		Qty.	0
-------------	--------------------	--------------	---	-------------------	--	-------------	---

Details DELINEATOR

Item	Priority Maintenance Issued	Grade	Y	Maint Code		Qty.	0
-------------	-----------------------------	--------------	---	-------------------	--	-------------	---

Details DECK, RAIL, END BENTS. DELINEATOR



Span 1 Right Bridge Rail: 0.125" WIDE DIAGONAL CRACK BEGINNING AT 5.5' FROM THE FAR END AT THE TOP OF THE RAIL AND RUNNING BACK TOWARDS THE FAR END. SPALL AT FAR END OF RAIL HAS BEEN PATCHED AS REPAIR TO PREVIOUS PAR.



Span 1 Right Bridge Rail: 0.125" WIDE DIAGONAL CRACK BEGINNING AT 5.5' FROM THE FAR END AT THE TOP OF THE RAIL AND RUNNING BACK TOWARDS THE FAR END. SPALL AT FAR END OF RAIL HAS BEEN PATCHED AS REPAIR TO PREVIOUS PAR.



Span 1 Left Bridge Rail: NEAR END OF THE LEFT RAIL HAS BEEN RE-POURED FOR 8' LONG AS REPAIRS TO PREVIOUS PAR.



DELINEATOR AT SOUTH WEST CORNER MISSING. (PAR)



Span 1 Right Bridge Rail: 9" WIDE X 1.5' HIGH X 4" DEEP SPALL IN NEAR END WITH ONE VERTICAL BAR EXPOSED AND CORRODING. (PAR)



End Bent 1 Abutment: 1' WIDE X 9" HIGH X 2" DEEP DELAMINATION WITH EXPOSED AND CORRODING REINFORCING STEEL AT THE RIGHT SIDE OF THE END BENT, 5' UP FROM THE GROUND. (PAR)



End Bent 1 Abutment: DIAGONAL CRACKS WITH EFFLORESCENCE IN LEFT END NEAR BREAKBACK.



End Bent 1 Abutment: EFFLORESCENCE BUILDUP EMANATING FROM BRIDGE SEAT.



End Bent 2 Abutment: HEAVY EFFLORESCENCE BUILDUP ALONG THE BRIDGE SEAT AND RANDOM HAIRLINE CRACKS WITH EFFLORESCENCE STAINING



End Bent 2 Abutment: MULTIPLE SPALLS UP TO 2' WIDE X 6" HIGH ALONG THE RIGHT SIDE OF THE END BENT WITH REINFORCING STEEL EXPOSED AND CORRODING. (PAR)



Span 1 Deck: 12' LONG X 1.5' WIDE X 4" DEEP DELAMINATION ALONG THE RIGHT SIDE OF THE SLAB BEGINNING 5' FROM THE NEAR END WITH HEAVY EFFLORESCENCE BUILDUP AND ONE LONGITUDINAL STEEL BAR EXPOSED. STEEL IS CORRODING WITH 0.0625" PITTING AND SCALE. (PAR)



Span 1 Deck: 12' LONG X 1.5' WIDE X 4" DEEP DELAMINATION ALONG THE RIGHT SIDE OF THE SLAB BEGINNING 5' FROM THE NEAR END WITH HEAVY EFFLORESCENCE BUILDUP AND ONE LONGITUDINAL STEEL BAR EXPOSED. STEEL IS CORRODING WITH 0.0625" PITTING AND SCALE. (PAR)



Span 1 Deck: 12' LONG X 1.5' WIDE X 4" DEEP DELAMINATION ALONG THE RIGHT SIDE OF THE SLAB BEGINNING 5' FROM THE NEAR END WITH HEAVY EFFLORESCENCE BUILDUP AND ONE LONGITUDINAL STEEL BAR EXPOSED. STEEL IS CORRODING WITH 0.0625" PITTING AND SCALE. (PAR)



Span 1 Deck: HAIRLINE MAP CRACKS SCATTERED THROUGHOUT THE UNDERSIDE OF THE SLAB.



Span 1 Deck: 1.5' WIDE X FULL LENGTH X 6" DEEP DELAMINATION ALONG THE LEFT SIDE OF THE SLAB WITH HEAVY EFFLORESCENCE BUILDUP AND ONE EXPOSED LONGITUDINAL STEEL BAR. STEEL IS CORRODING WITH 0.0625" PITTING AND SCALE LOSS. (PAR)



Span 1 Deck: 1.5' WIDE X FULL LENGTH X 6" DEEP DELAMINATION ALONG THE LEFT SIDE OF THE SLAB WITH HEAVY EFFLORESCENCE BUILDUP AND ONE EXPOSED LONGITUDINAL STEEL BAR. STEEL IS CORRODING WITH 0.0625" PITTING AND SCALE LOSS. (PAR)



Span 1 Deck: 1.5' WIDE X FULL LENGTH X 6" DEEP DELAMINATION ALONG THE LEFT SIDE OF THE SLAB WITH HEAVY EFFLORESCENCE BUILDUP AND ONE EXPOSED LONGITUDINAL STEEL BAR. STEEL IS CORRODING WITH 0.0625" PITTING AND SCALE LOSS. (PAR)



Span 1 Deck: 1.5' WIDE X FULL LENGTH X 6" DEEP DELAMINATION ALONG THE LEFT SIDE OF THE SLAB WITH HEAVY EFFLORESCENCE BUILDUP AND ONE EXPOSED LONGITUDINAL STEEL BAR. STEEL IS CORRODING WITH 0.0625" PITTING AND SCALE LOSS. (PAR)

Stream Bed Soundings

(Profile diagram on following sheet)

County **MITCHELL**

Structure Number: **600019**

Inspection Date **10/19/2021**

Sounding recorded from: **Top of Bridge Rail**

Highwater Mark Distance **17.3**

Location of Highwater Mark **CURRENT WATER SURFACE**

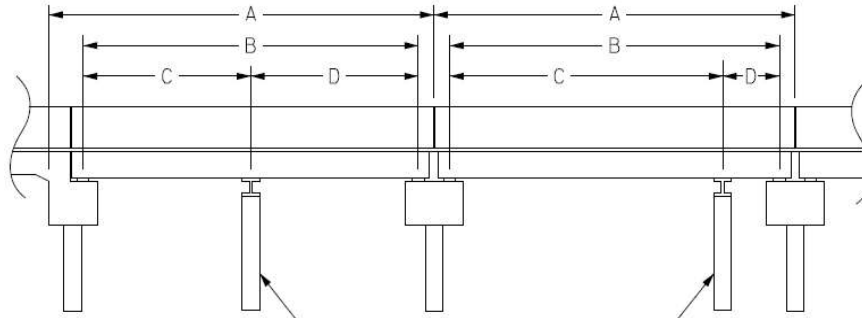
Distance (Station) ft.	Downstream Sounding ft.	Upstream Sounding ft.	Description
0.000	3.400	0.000	FF END BENT 1
1.100	16.400	14.800	SF END BENT 1
6.000	17.300	0.000	WSWE
11.000	17.600	0.000	THALWEG
16.000	17.300	0.000	WSWE
21.000	14.500	16.200	SF END BENT 2
22.000	3.400	0.000	FF END BENT 2

Structure Data Worksheet

Span Profile

County: **MITCHELL**

Structure Number: **600019**



A: SPAN LENGTH
 B: BEARING TO BEARING
 C: DISTANCE FROM NEAR BEARING
 D: DISTANCE TO FAR BEARING

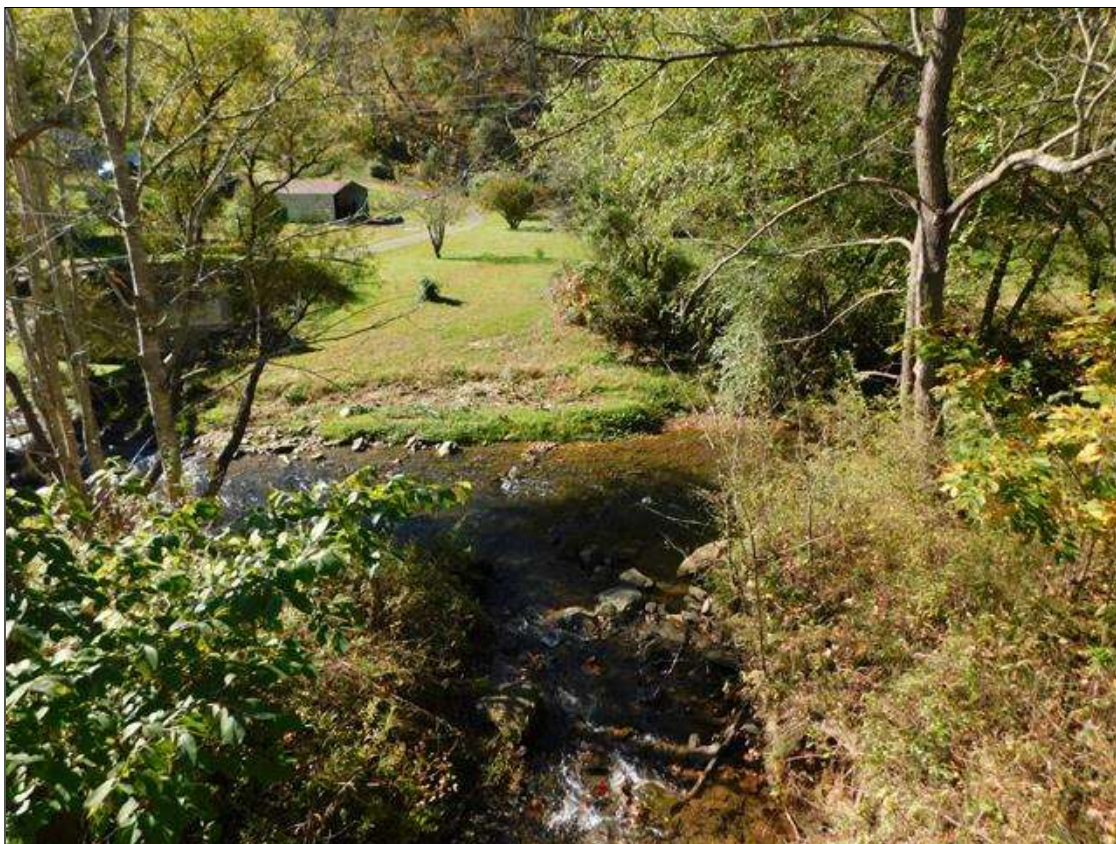
Span Number	Span Length	Bearing to Bearing	Crutch/ Helper Bent	Distance to Near Bearing	Distance to Far Bearing
1	22.000	19.917			



SOUTH APPROACH LOOKING NORTH



LOOKING UPSTREAM



LOOKING DOWNSTREAM



NORTH APPROACH LOOKING SOUTH



DOWNSTREAM PROFILE



END BENT 1



END BENT 2



DECK UNDERSIDE



UPSTREAM PROFILE



SOUTH APPROACH NARROW BRIDGE SIGN



NORTH APPROACH NARROW BRIDGE SIGN







BRIDGE INSPECTOR'S RECOMMENDATION FOR MAINTENANCE REPAIRS

Bridge: 600019

County MITCHELL

Date:

These Repairs Should Be Made Within Twelve Months From Date Of This Inspection

MMS Code	Description of Function	Unit	Quantity	Remarks	Est. Cost
 3250	Install or Replace Ground Mounted Signs	SF	3	DELINEATOR AT SOUTH WEST CORNER MISSING. (PAR)	
 3318	Maint to Concrete Handrail	LF	1	Span 1 Right Bridge Rail: 9" WIDE X 1.5' HIGH X 4" DEEP SPALL IN NEAR END WITH ONE VERTICAL BAR EXPOSED AND CORRODING. (PAR)	
 3326	Maintain Concrete Deck	SF	12	Span 1 Deck: 12' LONG X 1.5' WIDE X 4" DEEP DELAMINATION ALONG THE RIGHT SIDE OF THE SLAB BEGINNING 5' FROM THE NEAR END WITH HEAVY EFFLORESCENCE BUILDUP AND ONE LONGITUDINAL STEEL BAR EXPOSED. STEEL IS CORRODING WITH 0.0625" PITTING AND SCALE. (PAR)	
 3326	Maintain Concrete Deck	SF	20	Span 1 Deck: 1.5' WIDE X FULL LENGTH X 6" DEEP DELAMINATION ALONG THE LEFT SIDE OF THE SLAB WITH HEAVY EFFLORESCENCE BUILDUP AND ONE EXPOSED LONGITUDINAL STEEL BAR. STEEL IS CORRODING WITH 0.0625" PITTING AND SCALE LOSS. (PAR)	
 3350	Maint R C Wings and Walls	SF	5	End Bent 2 Abutment: MULTIPLE SPALLS UP TO 2' WIDE X 6" HIGH ALONG THE RIGHT SIDE OF THE END BENT WITH REINFORCING STEEL EXPOSED AND CORRODING. (PAR)	
 3350	Maint R C Wings and Walls	SF	1	End Bent 1 Abutment: 1' WIDE X 9" HIGH X 2" DEEP DELAMINATION WITH EXPOSED AND CORRODING REINFORCING STEEL AT THE RIGHT SIDE OF THE END BENT, 5' UP FROM THE GROUND. (PAR)	

Key

 Priority Maintenance Item

 Critical Finding Item

 Priority Maintenance Level Not Determined

BRIDGE INSPECTOR'S RECOMMENDATION FOR PRIORITY MAINTENANCE REPAIRS

Bridge: 600019

County MITCHELL

THE FOLLOWING MAINTENANCE ITEMS HAVE BEEN SUBMITTED IN CONJUNCTION WITH A PRIORITY MAINTENANCE REQUEST

MMS Code	MMS Description	Quantity
3250	Install or Replace Ground Mounted Signs	3 SF
Location:		
Bent/Span No.		
Priority Level	Status	
	Request Awaiting Assignment	
Submitted Date:	Submitted By:	Assisted By:
10/19/2021	Joseph Huntsinger	
Details		
DELINEATOR AT SOUTH WEST CORNER MISSING. (PAR)		

MMS Code	MMS Description	Quantity
3318	Maint to Concrete Handrail	1 LF
Location:		
Bent/Span No.		
Priority Level	Status	
	Request Awaiting Assignment	
Submitted Date:	Submitted By:	Assisted By:
10/19/2021	Joseph Huntsinger	
Details		
Span 1 Right Bridge Rail: 9" WIDE X 1.5' HIGH X 4" DEEP SPALL IN NEAR END WITH ONE VERTICAL BAR EXPOSED AND CORRODING. (PAR)		

BRIDGE INSPECTOR'S RECOMMENDATION FOR PRIORITY MAINTENANCE REPAIRS

Bridge: 600019

County MITCHELL

THE FOLLOWING MAINTENANCE ITEMS HAVE BEEN SUBMITTED IN CONJUNCTION WITH A PRIORITY MAINTENANCE REQUEST

MMS Code	MMS Description	Quantity
3326	Maintain Concrete Deck	12 SF
Location:		
Bent/Span No.		
Priority Level	Status	
	Request Awaiting Assignment	
Submitted Date:	Submitted By:	Assisted By:
10/19/2021	Joseph Huntsinger	
Details		
<p>Span 1 Deck: 12' LONG X 1.5' WIDE X 4" DEEP DELAMINATION ALONG THE RIGHT SIDE OF THE SLAB BEGINNING 5' FROM THE NEAR END WITH HEAVY EFFLORESCENCE BUILDUP AND ONE LONGITUDINAL STEEL BAR EXPOSED. STEEL IS CORRODING WITH 0.0625" PITTING AND SCALE. (PAR)</p>		

MMS Code	MMS Description	Quantity
3326	Maintain Concrete Deck	20 SF
Location:		
Bent/Span No.		
Priority Level	Status	
	Request Awaiting Assignment	
Submitted Date:	Submitted By:	Assisted By:
10/19/2021	Joseph Huntsinger	
Details		
<p>Span 1 Deck: 1.5' WIDE X FULL LENGTH X 6" DEEP DELAMINATION ALONG THE LEFT SIDE OF THE SLAB WITH HEAVY EFFLORESCENCE BUILDUP AND ONE EXPOSED LONGITUDINAL STEEL BAR. STEEL IS CORRODING WITH 0.0625" PITTING AND SCALE LOSS. (PAR)</p>		

BRIDGE INSPECTOR'S RECOMMENDATION FOR PRIORITY MAINTENANCE REPAIRS

Bridge: 600019

County MITCHELL

THE FOLLOWING MAINTENANCE ITEMS HAVE BEEN SUBMITTED IN CONJUNCTION WITH A PRIORITY MAINTENANCE REQUEST

MMS Code	MMS Description	Quantity
3350	Maint R C Wings and Walls	5 SF
Location:		
Bent/Span No.		
Priority Level	Status	
	Request Awaiting Assignment	
Submitted Date:	Submitted By:	Assisted By:
10/19/2021	Joseph Huntsinger	
Details		
End Bent 2 Abutment: MULTIPLE SPALLS UP TO 2' WIDE X 6" HIGH ALONG THE RIGHT SIDE OF THE END BENT WITH REINFORCING STEEL EXPOSED AND CORRODING. (PAR)		

MMS Code	MMS Description	Quantity
3350	Maint R C Wings and Walls	1 SF
Location:		
Bent/Span No.		
Priority Level	Status	
	Request Awaiting Assignment	
Submitted Date:	Submitted By:	Assisted By:
10/19/2021	Joseph Huntsinger	
Details		
End Bent 1 Abutment: 1' WIDE X 9" HIGH X 2" DEEP DELAMINATION WITH EXPOSED AND CORRODING REINFORCING STEEL AT THE RIGHT SIDE OF THE END BENT, 5' UP FROM THE GROUND. (PAR)		

Bridge Inspection Field Sketch

Deck Width/Out to Out	21.75ft	Between Rails	19.167ft
Clear Roadway	19.167ft	Wearing Surface	0.333ft
Median Width		Median Height	
Curb Height	Left	0.333ft	Right 0.333ft
Sidewalk Width	Left		Right
Clear Roadway (Rail to Median)	Left		Right
Guardrail Width	Left	1.0ft	Right 1.0ft
Top of Rail to Deck/Wearing Surface	Left	3.417ft	Right 3.417ft
Bridge Rail	Left	Type 30	Right Type 30

Note: AWS is level with top of curbs.

Measurements for Span #	1		
Deck Thickness	1.667	Left Overhang	0.25
Top of Rail to Bottom of Beam	5.5	Right Overhang	0.25

Number of Slabs	Slab Width	Slab Height	Comments
1	21.250ft	1.667ft	

10/19/21 - J.C.HUNTSINGER

(Concrete Abutments)

Title Typical Section	Description Data Worksheet
Bridge No: 600019	Drawn By: Roy W. Shook
Date: 03/05/2008	File Name: S0106001091

Bridge Inspection Field Sketch



50' SOUTH OF THE BRIDGE

Roadway	19.5ft Wide	2 Paved Lanes	Looking North
Left Shoulder	1ft Wide	1ft Paved	
Right Shoulder	1ft Wide	1ft Paved	
Left Guardrail			
Right Guardrail			

10/19/21 - J.C.HUNTSINGER

Title Approach Roadway		Description Data Worksheet	
Bridge No: 600019	Drawn By: D.D.H.	Date: 03/05/2008	File Name: S0106001090