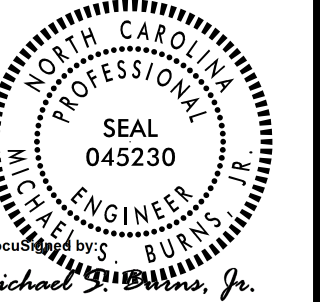


PROJECT TYPICAL DETAILS

| | |
|--|-----------|
| PROJECT REFERENCE NO. | SHEET NO. |
| R-5725 | UC-3A |
| DESIGNED BY: MSB | 3/17/2023 |
| DRAWN BY: MSB | |
| CHECKED BY: APY | |
| APPROVED BY: APY | |
| REVISED: | |
| NORTH CAROLINA DEPARTMENT OF TRANSPORTATION | |
| UTILITIES ENGINEERING SEC. PHONE: (919) 707-6690 FAX: (919) 250-4151 | |

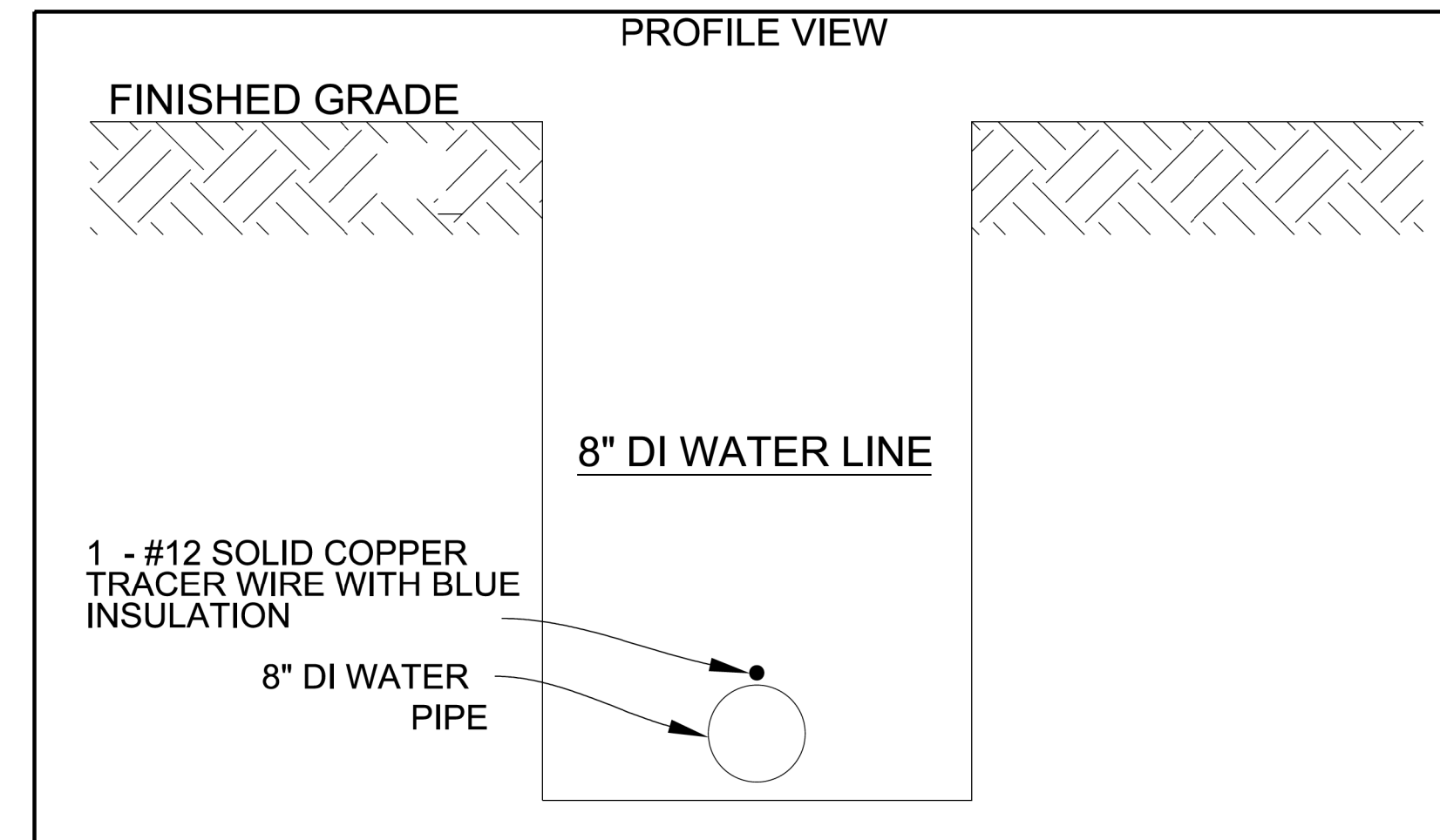


UTILITY CONSTRUCTION

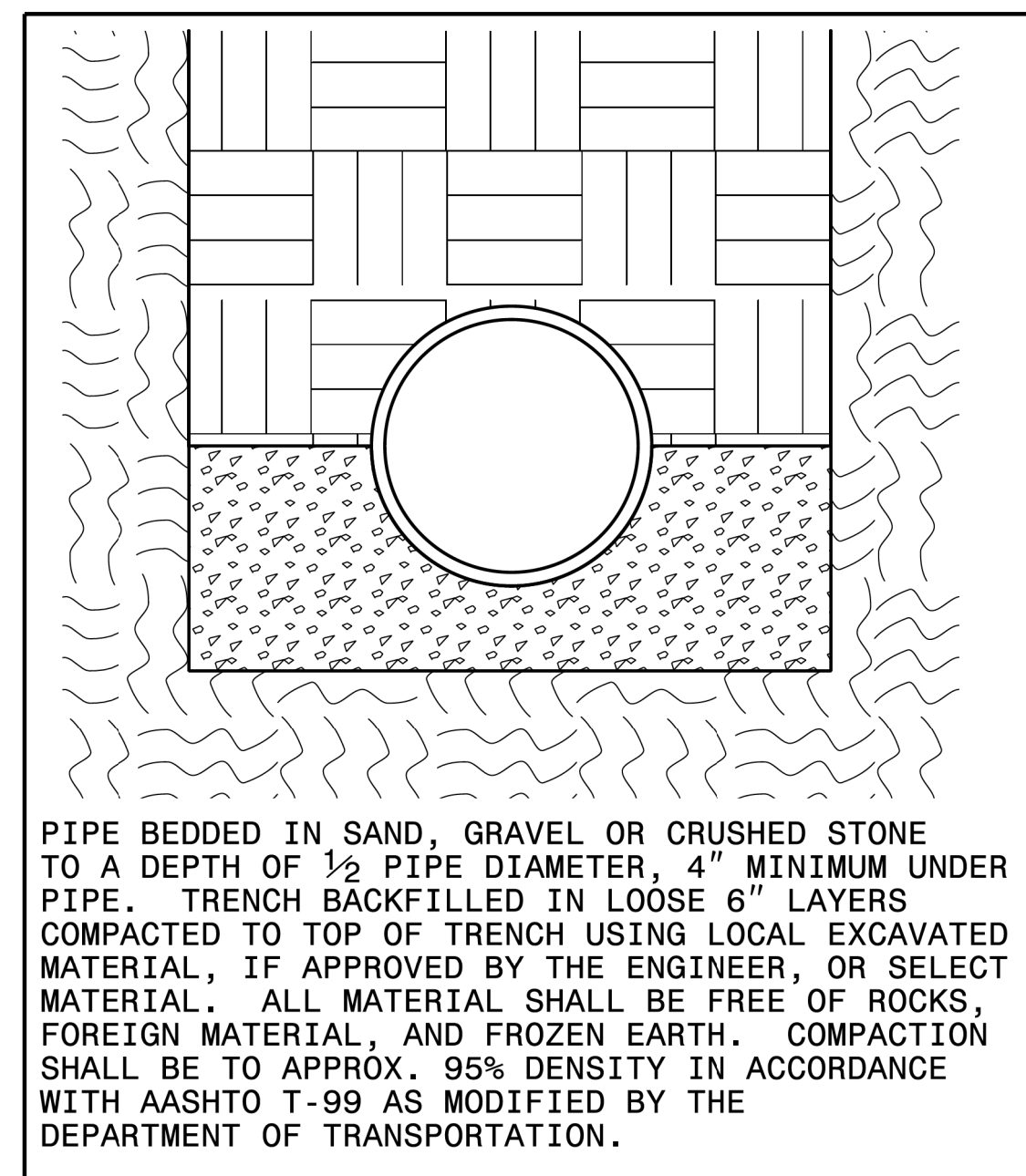
DOCUMENT NOT CONSIDERED FINAL
UNLESS ALL SIGNATURES COMPLETED

| NOMINAL PIPE SIZE (INCHES) | TRENCH WIDTH (INCHES) | NOMINAL PIPE SIZE (INCHES) | TRENCH WIDTH (INCHES) |
|----------------------------|-----------------------|----------------------------|-----------------------|
| 4 | 28 | 20 | 44 |
| 6 | 30 | 24 | 48 |
| 8 | 32 | 30 | 54 |
| 10 | 34 | 36 | 60 |
| 12 | 36 | 42 | 66 |
| 14 | 38 | 48 | 72 |
| 16 | 40 | 54 | 78 |
| 18 | 42 | | |

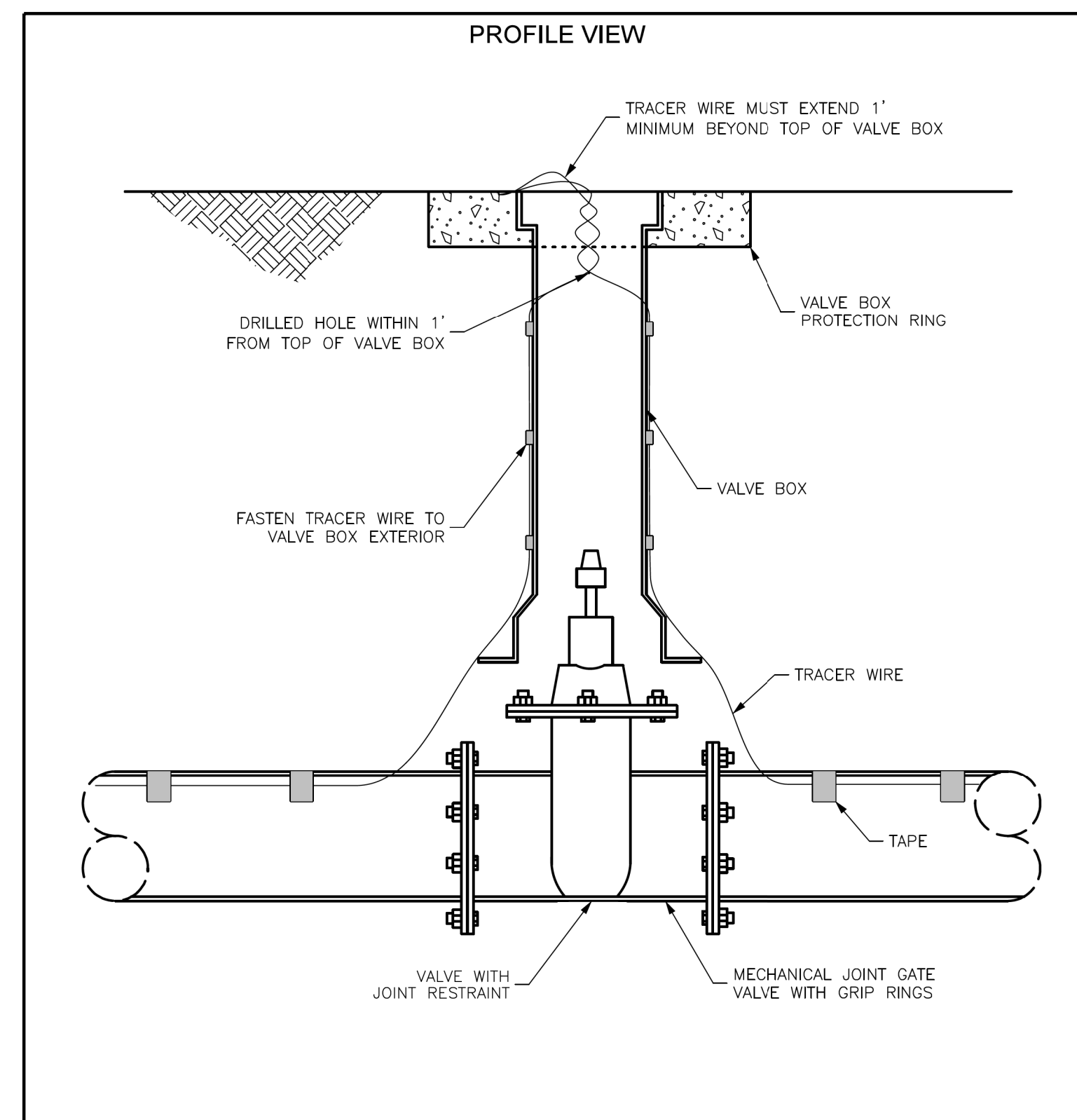
1 MAXIMUM TRENCH WIDTH AT TOP OF PIPE



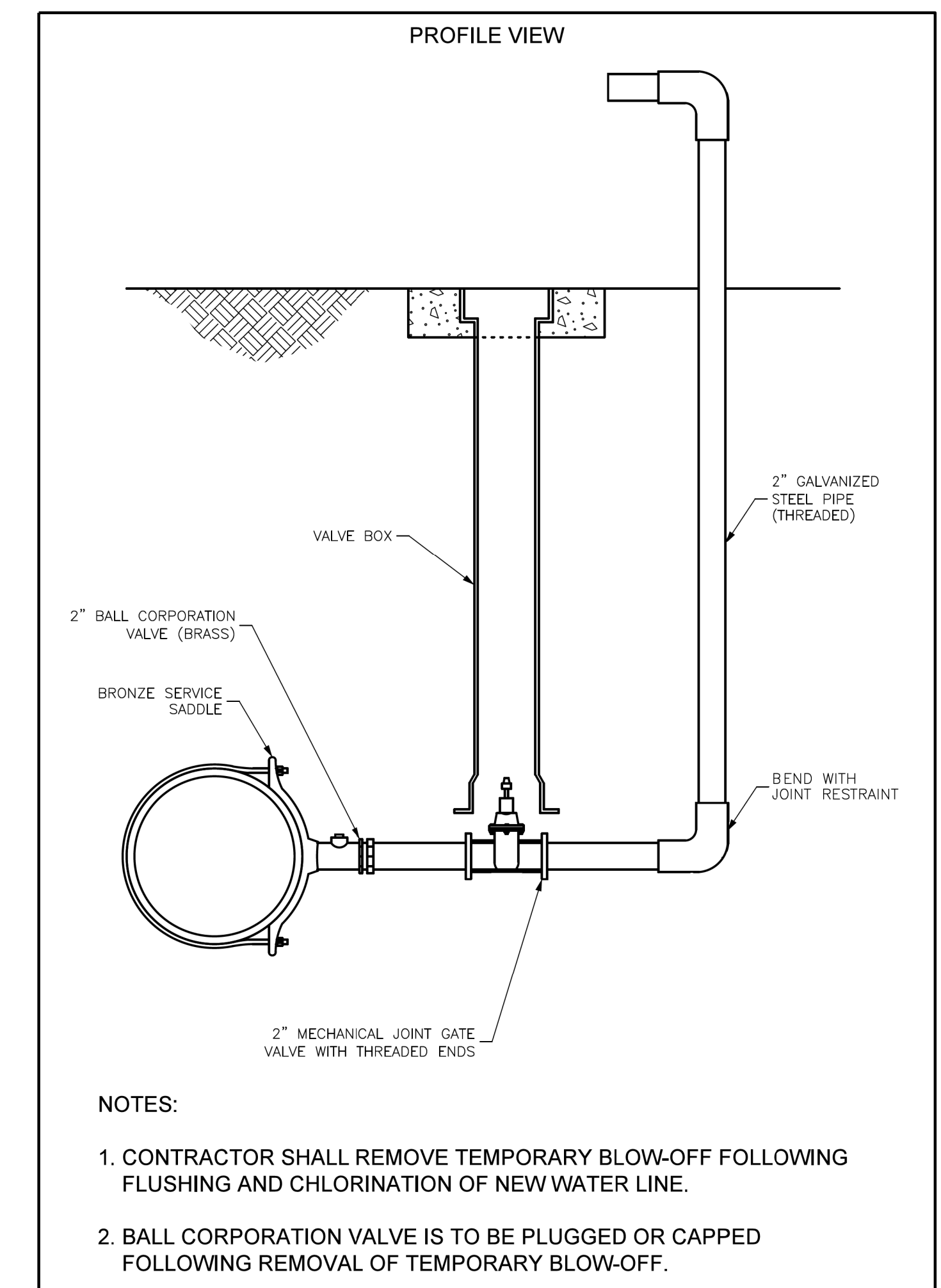
2 TRENCH DETAIL



3 PIPE BEDDING DETAIL



4 TRACER WIRE DETAIL



- NOTES:
- CONTRACTOR SHALL REMOVE TEMPORARY BLOW-OFF FOLLOWING FLUSHING AND CHLORINATION OF NEW WATER LINE.
 - BALL CORPORATION VALVE IS TO BE PLUGGED OR CAPPED FOLLOWING REMOVAL OF TEMPORARY BLOW-OFF.

5 2" TEMPORARY BLOW OFF DETAIL