

Location and Surveys

Dewberry
Dewberry Engineers Inc.
551 PINEY FOREST ROAD
DANVILLE, VA 24540
PHONE: 434.797.4487
FAX: 434.797.4341
NCBELS #F-0929

PROJECT SURVEYOR

3/9/2023

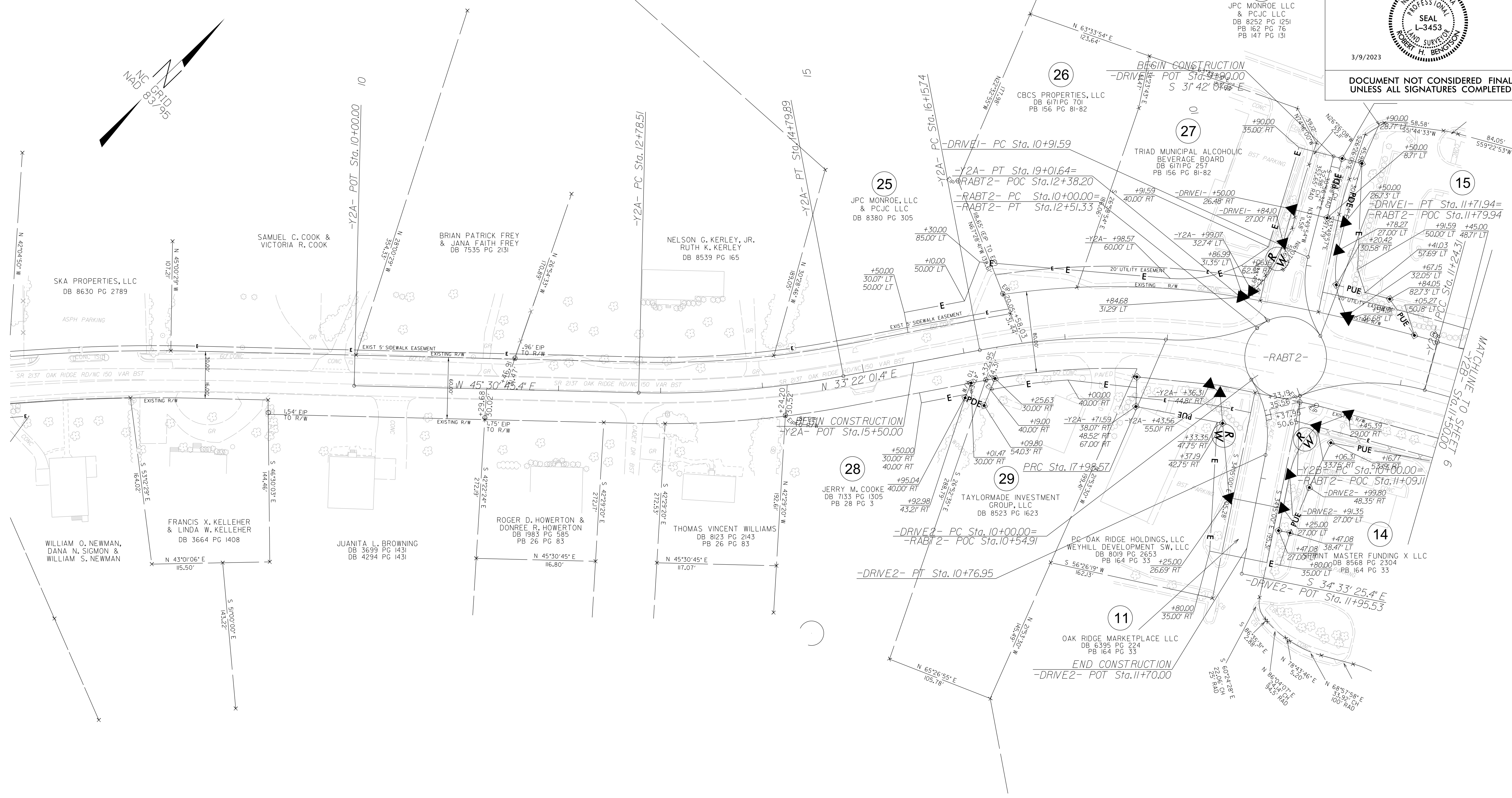
DOCUMENT NOT CONSIDERED FINAL UNLESS ALL SIGNATURES COMPLETED

I, Robert H. Bengtson, certify that the right of way and permanent easement monumentation for this project shown herein was completed under my direct and responsible charge from an actual survey made under my supervision; that all horizontal closures had a minimum ratio of precision of 1:10,000 (Class A). Field work was performed from Dec 2021 to Jan 2022 (Revised Feb 2023), and all coordinates are based on NAD83/1995. That this survey was performed to meet the requirements of 21NCAC 56.1600 as applicable.

This 9th day of March, 2023.

Robert H. Bengtson
Professional Land Surveyor L-3453

-Y2A-	-Y2A-	-Y2A-	-RABT2-	-DRIVE1-	-DRIVE2-	-Y2B-
PI Sta 13+79.58	PI Sta 17+07.68	PI Sta 18+51.28	PI Sta 10+00.00	PI Sta 11+34.07	PI Sta 10+40.49	PI Sta 10+64.24
$\Delta = 12^{\circ}08'44.0''$ (LT)	$\Delta = 14^{\circ}57'51.5''$ (RT)	$\Delta = 29^{\circ}31'43.6''$ (LT)	$\Delta = 360^{\circ}00'00.0''$ (LT)	$\Delta = 46^{\circ}02'11.1''$ (LT)	$\Delta = 44^{\circ}05'26.3''$ (RT)	$\Delta = 35^{\circ}36'48.8''$ (RT)
D = 6' 01" 52.1"	D = 8' 11" 06.4"	D = 28' 38" 52.4"	D = 143' 14" 22.0"	D = 57' 17" 44.8"	D = 57' 17" 44.8"	D = 28' 38" 52.4"
L = 201.38'	L = 182.82'	L = 103.07'	L = 251.33'	L = 80.35'	L = 76.95'	L = 124.31'
T = 101.07'	T = 91.93'	T = 52.71'	T = 0.00'	T = 42.49'	T = 40.49'	T = 64.24'
R = 950.00'	R = 700.00'	R = 200.00'	R = 40.00'	R = 100.00'	R = 100.00'	R = 200.00'
S _e = Exist.	V _D = 30 MPH	V _D = 25 MPH		V _D = 20 MPH	V _D = 20 MPH	V _D = 25 MPH
	S _e = 3%	Runoff = 60'				



NOTES:

1. IF FURTHER INFORMATION REGARDING PROJECT CONTROL IS NEEDED PLEASE CONTACT THE LOCATION AND SURVEYS UNIT.
2. PROJECT CONTROL WAS ESTABLISHED USING GNSS, THE GLOBAL NAVIGATION SATELLITE SYSTEM.
3. RIGHT OF WAY MONUMENTATION ESTABLISHED DEC 2021 TO JAN 2022. REVISED FEB 2023.

REVISIONS

P:\50142261\COPY\REV\REV\REV\MICROSTATION\REV SHEETS\R5725.LS.RW08.230308.dgn
 09-MAR-2023 08:01
 P:\50142261\COPY\REV\REV\MICROSTATION\REV SHEETS\R5725.LS.RW08.230308.dgn
 01-11-2023 14:22
 boowell